

PRODUCT NUMBER

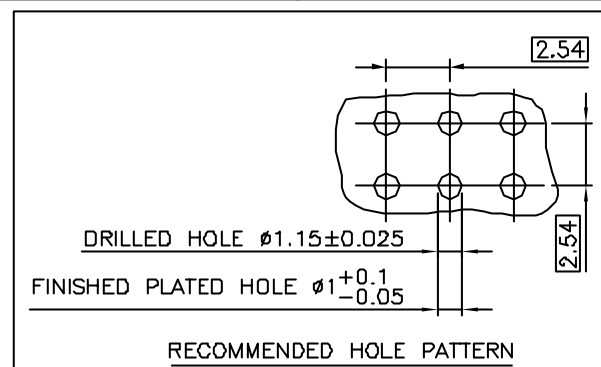
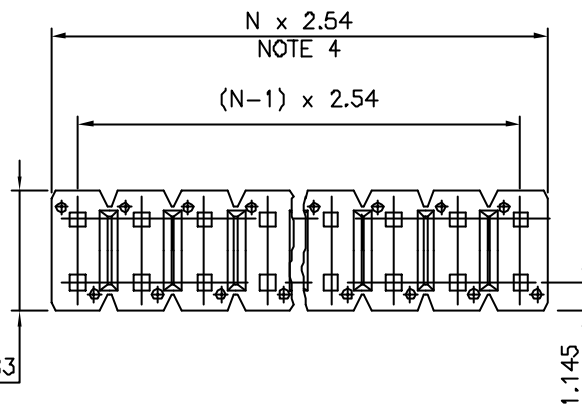
93690-YXX-XXLF

PLATING, SEE TABLE

LEAD FREE OPTION
SEE NOTE 6 & 7

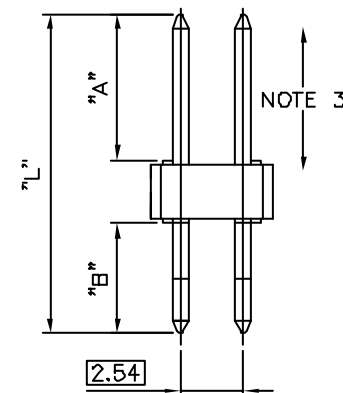
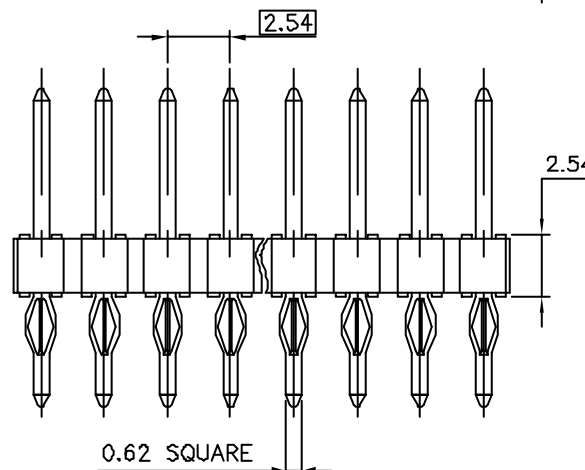
TOTAL NB OF POS
04 TO 72

PIN STYLE	DIM "A" REF	DIM "B" ±0.3	DIM "L" REF
01	7.5	4.7	14.78
02	10.14	4.7	17.40
03	5.68	4.7	12.83
04	14.89	4.7	22.15
05	8.3	4.7	15.44
06	6.8	3.6	12.9



NOTES:

- HOUSING MAT'L : HIGH TEMPERATURE THERMOPLASTIC. UL94V-0 COLOR: BLACK
- PIN MATERIAL : PHOSPHOR BRONZE
- 9N MIN RETENTION IN EITHER DIRECTION
- TO DETERMINE DIMENSIONS :
N = NUMBER OF POSITIONS PER ROW
EXAMPLE : 8 POS PER ROW, $N \times 2.54 = 20.32\text{mm}$
- STANDARD PACKAGING IN POLYBAGS
- FOR LEAD FREE PART NUMBER ADD "LF" SUFFIX AT THE END OF PART NUMBER
- "LF" MEANS THAT THE PRODUCT IS RoHS COMPLIANT THEN MEETS EUROPEAN UNION DIRECTIVES AND OTHER COUNTRY REGULATION AS DESCRIBED IN GS-22-008



XXXXX-4XXLF	3.05µm TIN OVER 1.27µm Ni MIN	
XXXXX-1XXLF	0.76µm GOLD OVER 1.27µm Ni MIN	1.0µm TIN OVER 1.27µm
XXXXX-4XX	3.05µm TIN-LEAD OVER 1.27µm Ni MIN	
XXXXX-1XX	0.76µm GOLD OVER 1.27µm Ni MIN	1.0µm TIN-LEAD OVER 1.27µm Ni MIN
PLATING NUMBER	CONTACT AREA	PRESS FIT TAIL AREA

mat'l. code SEE NOTE				tolerances unless otherwise specified		CUSTOMER COPY	FCI ELECTRONICS www.fciconnect.com		
Ltr	ech	no	dr	date			projection	title	
A	F40176	JMC	04.03.18	Linear	X ±0.30			HDR PRESS FIT	
B	F90388	LMU	99.06.30		.XX ±0.15			DOUBLE ROW	
C	FD0128	DLE	00.02.14	angles	.XXX ±0.05				
D	F10137	LMU	01.02.08	dr	MULIN.L	99.05.30		product family	BSTIK
E	F10190	LMU	01.04.08	eng	COMPAGNON J	08.06.30		size dwg no	213
F	F20115	LMU	02.01.15	chr	NIZZI.P	99.06.30		scale	1 of 1
G	F05-025	LMU	05.09.15	app	UM.C	96.05.06		A3	93690
Sheet	revision								
index	sheet								