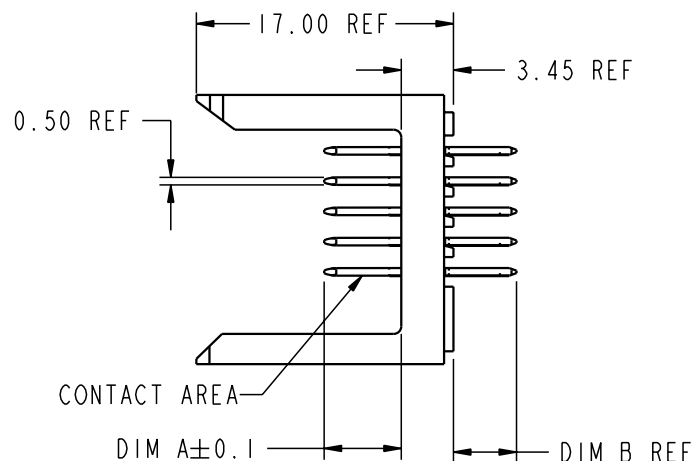
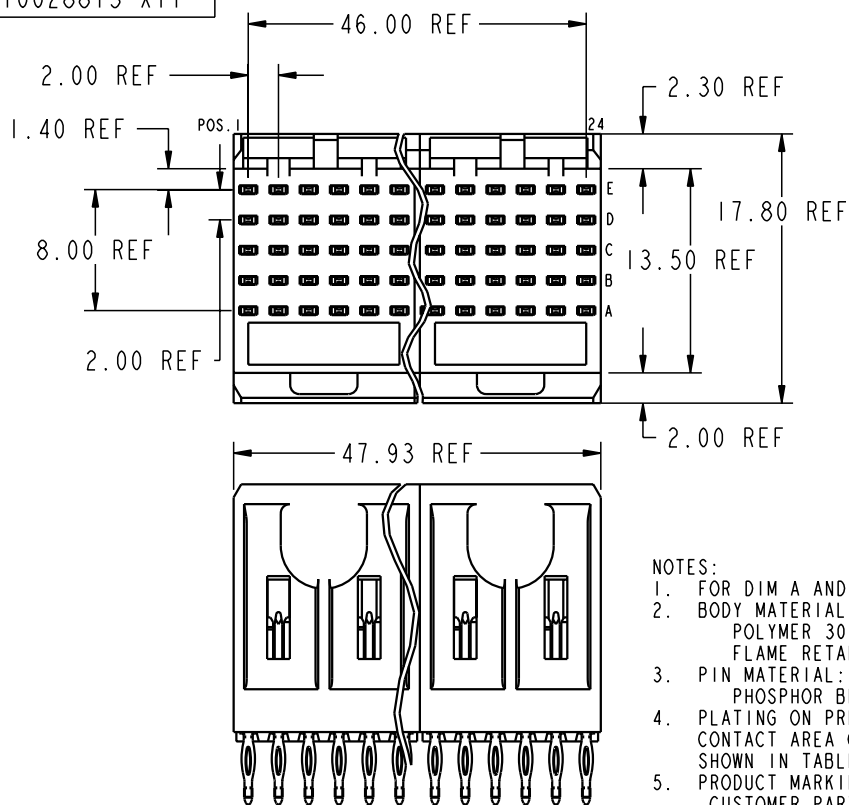


FCI

PRODUCT NUMBER
10028813-XXX



NOTES:

- FOR DIM A AND B SEE SHEET 2 AND UP.
- BODY MATERIAL: LIQUID CRYSTAL POLYMER 30 % GLASS.
FLAME RETARDANT ACC. UL 94-V0.
- PIN MATERIAL:
PHOSPHOR BRONZE.
- PLATING ON PRESS-FIT TAIL AREA SnPb. PLATING ON CONTACT AREA CONFORMS TO PERFORMANCE LEVEL SHOWN IN TABLE BELOW.
- PRODUCT MARKING:
CUSTOMER PART NUMBER DESIGNATION & BATCH I.D.
- ALL PRODUCTS WITH PART NUMBERS SHOWN IN SUBSEQUENT TABLES WILL BE PACKAGED IN TUBES. IF TRAY PACKAGING IS REQUIRED, A SUFFIX "P" WILL BE ADDED TO THE END OF THE PART NUMBER. EXAMPLE: XXXXX-XXX
- PRODUCT SPECIFICATION GS-12-180
APPLICATION SPECIFICATION BUS-20-073

PLATING IN CONTACT AREA	
DASH NUMBER	PERFORMANCE LEVEL
-N1YYY	TELCORDIA CO (NXT)
-1YYY	TELCORDIA CO
-2YYY	TELECOM CLASS
-3YYY	IEC CLASS I
-5YYY	TELCORDIA UE
-9YYY	TELCORDIA CO

mat'l code				tolerances unless otherwise specified		CUSTOMER		A FCI www.fciconnect.com	
ltr	ecr no.	dr	date	linear	0.X ± 0.3	COPY	projection	title	
A	V03-0538	DAI	05/13/03	linear	0.XX ± 0.13			METRAL SIGNAL HEADER	
B	V04-0459	LP	5/25/04	angles	.XXX ± 0.01			4 MOD, 5 ROW PRESS-FIT	
				dr	D. INGRAM 05/13/03			product family	
				enrg	M. GRAY 05/13/03			METRAL	
				chr	M. GRAY 05/13/03			code	
				appd	M. GRAY 05/13/03			213	
sheet		revision	B	B	B	scale		A	
index		sheet	1	2	3	2:1		10028813	
								1 of 3	

cage code 22526

Pro/E

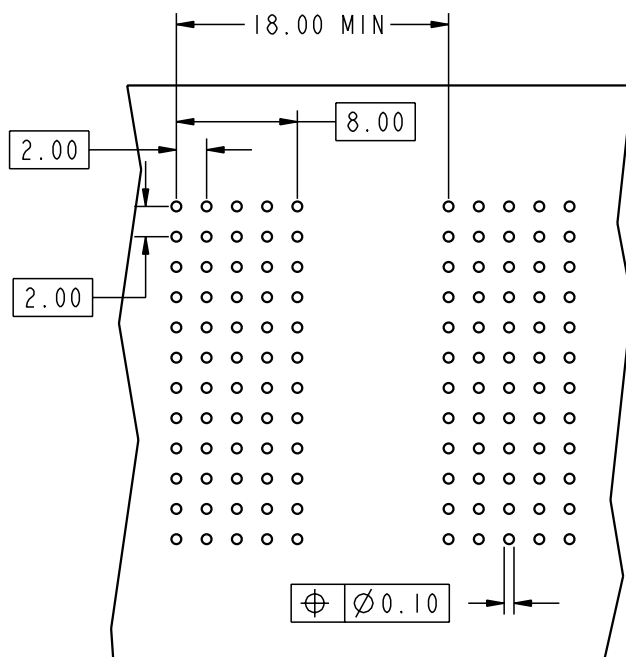
PDM: Rev:B

STATUS:Released

Printed: Jan 29, 2005


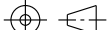

All rights strictly reserved. Reproduction or issue to third parties in any form whatever is not permitted without written authority from the proprietor. Property of FCI. Copyright FCI.

All rights strictly reserved. Reproduction or issue to third parties in any form whatever is not permitted without written authority from the proprietor. Property of FCI. Copyright FCI.



REQUIRED PC BOARD LAYOUT
COMPONENT SIDE
SEE PRINT 58351 FOR
ADDITIONAL PCB INFORMATION

KEY		
CODE	DIMENSIONS	
	DIM "A" MATE	DIM "B" TAIL
2	5.75	4.30
1	5.00	4.30
4	7.25	4.30

mat'l code				tolerances unless otherwise specified		CUSTOMER		 www.fciconnect.com	
ltr	ecn no.	dr	date	linear	0. X \pm 0.3	COPY			title METRAL SIGNAL HEADER 4 MOD, 5 ROW PRESS-FIT
B					0. XX \pm 0.13	projection			
					.XXX \pm .051				
				angles	0° \pm 2°				
				dr	D. INGRAM 05/13/03	MM		product family	METRAL
				enrg	M. GRAY 05/13/03			size	213
				chr	M. GRAY 05/13/03	scale		dwg no	sheet
				appd	M. GRAY 05/13/03	1 : 1		A	10028813
sheet index	revision sheet								

Pro/E

3

cage code	22526
-----------	-------

4

PDM: Rev:B

STATUS:Released

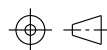
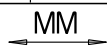
Printed: Jan 29, 2005

Tous droits strictement reserves. Reproduction ou communication a des tiers interdite sous quelque forme que ce soit sans autorisation écrite du propriétaire. Propriete de c FCI. Droits de reproduction FCI.

All rights strictly reserved. Reproduction or issue to third parties in any form whatever is not permitted without written authority from the proprietor. Property of FCI. Copyright FCI.

A
FCI

METRAL P/N	CUSTOMER P/N	ROW	CONTACT CODE MOD. 1						MOD. 2						MOD. 3						MOD. 4					
			1	2	3	4	5	6	7	8	9	10	11	12	13	14	15	16	17	18	19	20	21	22	23	24
10028813-X01	85801-2039	E	2	2	2	2	2	2	2	2	2	2	2	2	2	2	2	2	2	2	2	2	2	2	2	
		D	2	2	2	2	2	2	2	2	2	2	2	2	2	2	2	2	2	2	2	2	2	2	2	
		C	4	2	2	2	2	2	4	2	2	2	2	2	1	2	2	2	2	4	2	2	2	2	2	
		B	2	2	2	2	2	2	2	2	2	2	2	2	2	2	2	2	2	2	2	2	2	2	2	
		A	2	2	2	2	2	2	2	2	2	2	2	2	2	2	2	2	2	2	2	2	2	2	2	

mat'l code				--		tolerances unless otherwise specified		CUSTOMER		<div><div><div>A</div><div>FCI</div></div><div>www.fciconnect.com</div></div>				
lfr	ecn no.	dr	date	linear	0.X ±0.3		COPY		projection 	title METRAL SIGNAL HEADER 4 MOD, 5 ROW PRESS-FIT				
B					0.XX ±0.13									
					.XXX ±.051									
				angles	0° ±2°					product family			code	
				dr	D. INGRAM	05/13/03	METRAL			213				
				enrg	M. GRAY	05/13/03	size			sheet				
				chr	M. GRAY	05/13/03	dwg no			3				
				appd	M. GRAY	05/13/03	scale		A			10028813		
sheet index		revision sheet												

Pro/E

cage code 22526

PDM: Rev:B

STATUS: **Released**

Printed: Jan 29, 2005