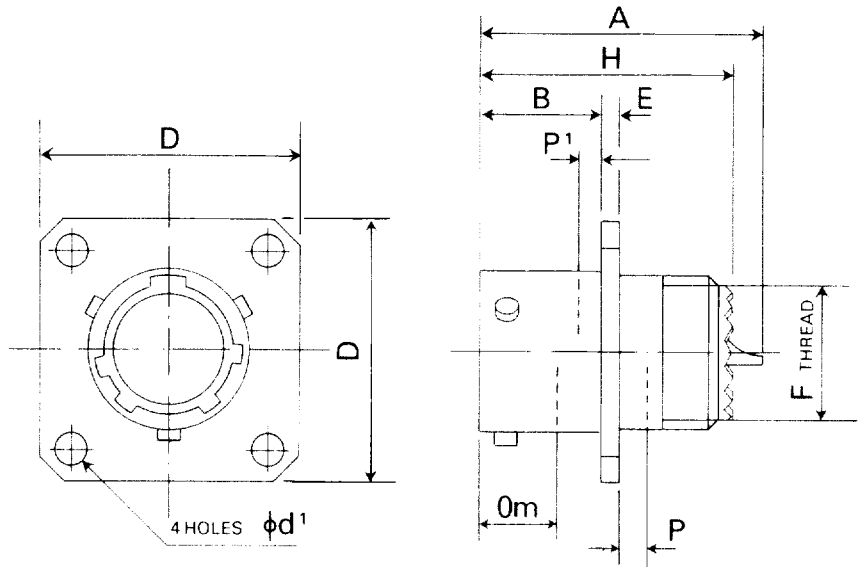
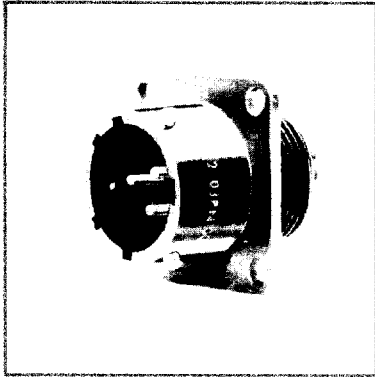


AB Style:- AB05-2000 Receptacle, Square Flange with Accessory Thread BS Style:- C2096



PANEL CUT-OUT DETAILS

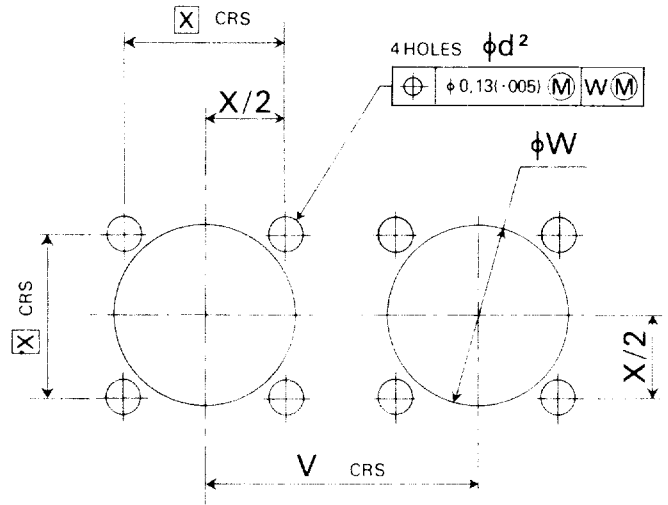
*P MAX. PANEL THICKNESS - 3.3 (0.13)

P¹ MIN. - CLEARANCE DISTANCE FOR MATING CONNECTOR

SIZE 8 TO 18 - 2.0 (0.08)

SIZE 20 TO 24 - 5.3 (0.21)

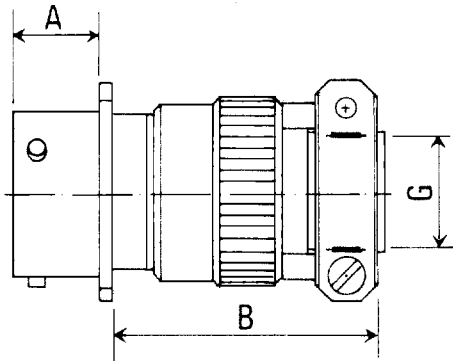
*P MAY BE INCREASED IF 'W' IS ENLARGED TO CLEAR ACCESSORY



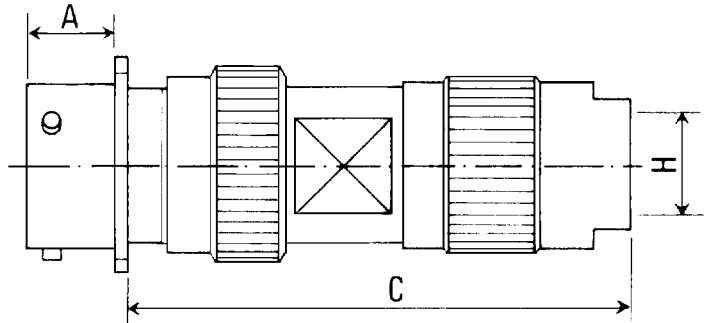
- Metric - Imperial

HOUSING (SHELL) SIZE	A max.	B max.	D	E max.	F thread	H max.	O _m min.	φ d ¹	φ d ²	V min.	φ W	X (TP)	MASS MAX. G
			sq. max.		UNEF 2A		OVERLAP	min.	min.		±0.13(-005)		
08	26.4	11.8	21.1	2.0	7/16 -28	26.0	7.3	3.05	3.25	22.6	14.43	15.09	10
	1.04	0.46	0.83	0.08		1.02	0.29	0.12	0.128	0.89	0.568	0.594	
10	26.4	11.8	24.4	2.0	9/16 -24	26.0	7.3	3.05	3.25	25.4	17.40	18.26	13
	1.04	0.46	0.96	0.08		1.02	0.29	0.12	0.128	1.00	0.685	0.719	
12	26.4	11.8	26.7	2.0	1 1/16 -24	26.0	7.3	3.05	3.25	29.7	21.95	20.62	16
	1.04	0.46	1.05	0.08		1.02	0.29	0.12	0.128	1.17	0.884	0.812	
14	26.4	11.8	29.3	2.0	1 3/16 -20	26.0	7.3	3.05	3.25	33.0	25.12	23.01	22
	1.04	0.46	1.15	0.08		1.02	0.29	0.12	0.128	1.30	0.989	0.906	
16	26.4	11.8	31.5	2.0	1 5/16 -20	26.0	7.3	3.05	3.25	38.1	28.27	24.61	27
	1.04	0.46	1.24	0.08		1.02	0.29	0.12	0.128	1.50	1.113	0.969	
18	26.4	11.8	33.8	2.0	1 7/16 -18	26.0	7.3	3.05	3.25	40.9	31.45	26.97	38
	1.04	0.46	1.33	0.08		1.02	0.29	0.12	0.128	1.61	1.238	1.062	
20	30.4	15.0	37.1	2.8	1 3/8 -18	28.5	8.9	3.05	3.25	43.9	34.62	29.36	52
	1.20	0.59	1.46	0.11		1.12	0.35	0.12	0.128	1.73	1.363	1.156	
22	30.4	15.0	40.2	2.8	1 5/8 -18	28.5	8.9	3.05	3.25	46.7	37.80	31.75	65
	1.20	0.59	1.58	0.11		1.12	0.35	0.12	0.128	1.84	1.488	1.250	
24	30.4	15.8	43.5	2.8	1 7/8 -18	30.0	8.9	3.73	3.86	50.0	41.02	34.93	77
	1.20	0.62	1.71	0.11		1.18	0.35	0.147	0.152	1.97	1.615	1.375	

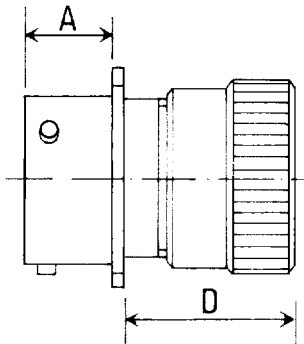
AB05-2027



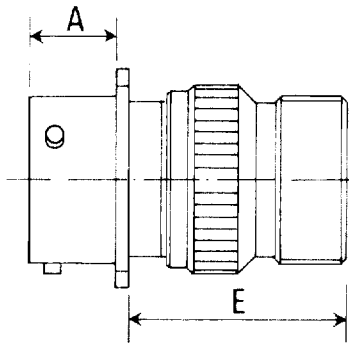
AB05-2029 (Type A & C Cables)
AB05-2030 (Type B & Q Cables)



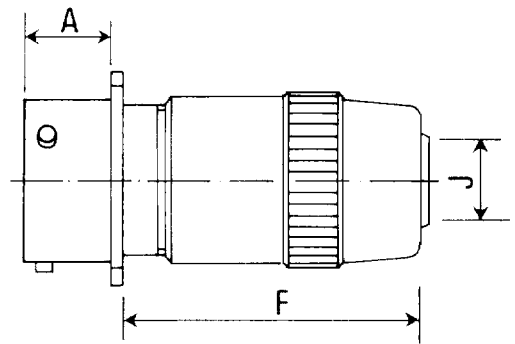
AB05-2040



AB05-2050



AB05-2055



- Metric - Imperial

SHELL SIZE	A max.	B	C for AB05 0029	C for AB05 0030	D	E	F	CABLE ϕ G MAX.	CABLE ϕ H MAX.	CABLE ϕ J MAX.
08	11-80	38-68	61-23	60-98	23-57	28-70	33-40	4-06	9-09	5-84
	0-464	1-523	2-411	2-401	0-928	1-130	1-315	0-160	0-358	0-230
10	11-80	38-68	61-49	61-06	23-57	28-70	33-40	5-02	9-09	7-92
	0-464	1-523	2-421	2-404	0-928	1-130	1-315	0-192	0-358	0-321
12	11-80	38-68	72-28	71-95	23-57	28-70	35-68	8-30	12-09	11-22
	0-464	1-523	2-846	2-833	0-928	1-130	1-405	0-327	0-476	0-442
14	11-80	38-68	71-78	71-83	23-57	28-70	38-98	9-77	13-20	13-69
	0-464	1-523	2-826	2-828	0-928	1-130	1-535	0-385	0-520	0-539
16	11-80	40-71	75-20	74-26	23-57	28-70	44-95	12-95	14-73	15-59
	0-464	1-603	2-961	2-924	0-928	1-130	1-770	0-510	0-580	0-614
18*										
20	15-00	43-58	74-77	*	22-50	28-42	53-67	16-12	17-24	18-89
	0-590	1-716	2-944		0-886	1-119	2-113	0-635	0-679	0-744
22*										
24	15-80	43-58	83-43	*	21-74	27-66	59-25	20-57	21-10	22-70
	0-622	1-716	3-285		0-856	1-089	2-333	0-810	0-831	0-894

* Please consult factory