

# TERMINATIONS

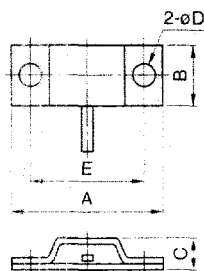
## Strip-line type

### CD series

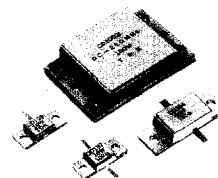
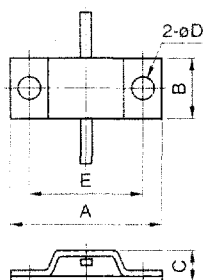
Stripline type terminations are used in combination with TDK stripline circulators as dummy loads. They can also be used in printed stripline circuitry as terminations.

#### SHAPES AND DIMENSIONS

##### SINGLE



##### BOTH-SIDE



#### ELECTRICAL CHARACTERISTICS

Part No.	Frequency range (GHz)	Power rating (W)		VSWR $Z_0=50\Omega$ max.	Size [Except connector] (mm) A×B×C×D	E	Weight (g)	Connector type
Single tab type								
CD012L	DC to 7.2	10		1.2	12.4×4×3×2.5	8	2	
CD106L	DC to 1	10	When attachment surface is 100°C max.	1.2	20×8×4.2×3	15	3	Stripline
CD103L	DC to 1	30		1.2	20×8×4.2×3	15	3	
CD302L	DC to 1	50		1.2	35×11×7.5×3.5	28	10	
CD1002L	DC to 0.25	150		1.2	50×32×10.5×4.5	42	30	
Both-side tab type								
CD107L	DC to 1	10	When attachment surface is 100°C max.	1.2	20×8×4.2×3	15	3	Stripline
CD104L	DC to 1	30		1.2	20×8×4.2×3	15	3	
CD304L	DC to 1	50		1.2	35×11×7.5×3.5	28	10	

- In many instances, however, units in which dummy loads are used, (i.e. power amplifiers) are already furnished with a heat sink. Thus, for the dummy load itself, no additional heat sink is necessary as long as the heat sink provided has sufficiently low heat resistance.

