

**SSCF-2P1 Series**  
**SC DUPLEX HOUSING**  
**( $\phi$ 0.9mm / Push-pull Type)**  
**TECHNICAL SPECIFICATIONS**

**Seiko Instruments Inc.**

Components Sales Dept.

8, Nakase 1-Chome

Mihama-ku, Chiba-shi, Chiba-ken

261 JAPAN

Telephone : 043-211-1214

-1215

Facsimile : 043-211-8035

SSCF-2P1 Series SC DUPLEX HOUSING (  $\phi$  0.9mm / Push-pull Type )  
TECHNICAL SPECIFICATIONS

Document Number NCD-62B2-02

NCD-62B2-01	February 1996
NCD-62B2-02	March 1996

Copyright 1996 by **Seiko Instruments Inc.**  
All right reserved.

The information contained herein shall not reproduced or disclosed to any third party without the express written consent of **SII**.

The Specifications contained herein are subject to change without notice.

**SII** is a trademark of **Seiko Instruments Inc.**

Please address any questions, comments, and suggestions to:

**Seiko Instruments USA Inc.**

Electronics Components Division  
2990 West Lomita Boulevard  
Torrance, CA 90505, U.S.A.  
Phone: 310-517-7780  
Fax: 310-517-7792

**Seiko Instruments (H.K.) Ltd.**

Sales Department  
4th & 5th Floor, Wyler Center 2  
200 Tai Lin Pai Road, Kwai Chung  
N.T., Kowloon, Hong Kong  
Phone: 852-2421-8611  
Fax: 852-2480-5479

**Seiko Instruments Singapore pte. Ltd.**

2, Marsiling Lane,  
Woodlands New Town,  
Singapore, 2573, Singapore  
Phone: 65-2691370  
Fax: 65-2699729

**Seiko Instruments GmbH**

OFC Division  
Siemensstraße 9b  
D-63263 Neu-Isenburg, Germany  
Phone: 06102-297-0  
Fax: 06102-297-211

**Seiko Instruments Taiwan Inc.**

Sales Department  
5F-1, No.99, Sec. 2, Chung Shan  
Rd.  
Taipei 104, Taiwan, R.O.C.  
Phone: 02-563-5001, 523-5111  
Fax: 02-521-9519

## TABLE OF CONTENTS

Section	Page
1. PROVISION	1
1.1 Application Limit	1
2. PARTS NUMBER	1
3. GENERAL SPECIFICATIONS	2
3.1 Parts and Materials	2
3.2 Physical Dimensions	2
3.3 General Tolerances	2
4. PACKING	3

### Table

Table 1	Parts Number	1
Table 2	Parts and Materials	2
Table 3	General Tolerance	2

### Figure

Figure 1	SSCF-2P1 Housing	4
Figure 2 to 7	Part Dimensions	5 to 7



## 1. PROVISION

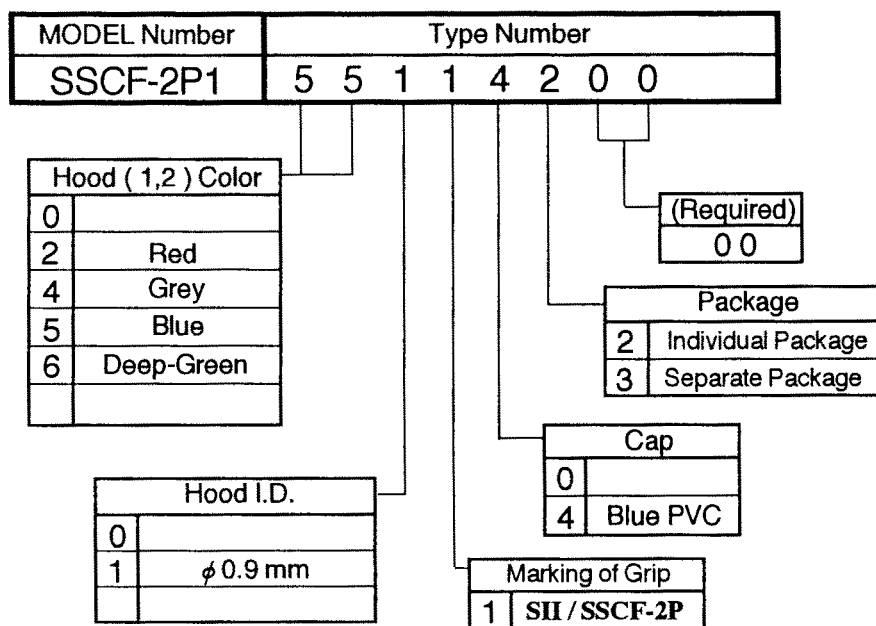
### 1.1 Application Limit

These specifications apply to the SSCF-2P1 SC DUPLEX HOUSING (  $\phi$  0.9mm / Push-pull Type ) supplied by **SII**.

## 2. PARTS NUMBER

Parts Number of the Housing is Shown in Table 1.

Table 1 Parts Number



### 3. GENERAL SPECIFICATIONS

#### 3.1 Parts and Materials

Parts and the Materials are shown in Table 2.

Table 2 Parts and Materials

No.	Part Name	Q'ty	Material	Notes
①	Grip	1	Plastics	Blue , UL94 V-0
②	Plug frame	2	Plastics	White , UL94 V-0
③	Spring	2	Stainless Steel	- -
④	Stop ring	2	Brass	Nickel Plating
⑤	Hood	2	Synthetic Rubber	Hood Color Shows Table 1, UL94 V-0.
⑥	Cap	2	PVC	Blue

#### 3.2 Physical Dimensions

Figure 1 shows the assembled state of SSCF-2P1.

Figure 2 to 7 show the part dimension.

- Compatible with NTT SCF-2PH plug housing

#### 3.3 General Tolerances

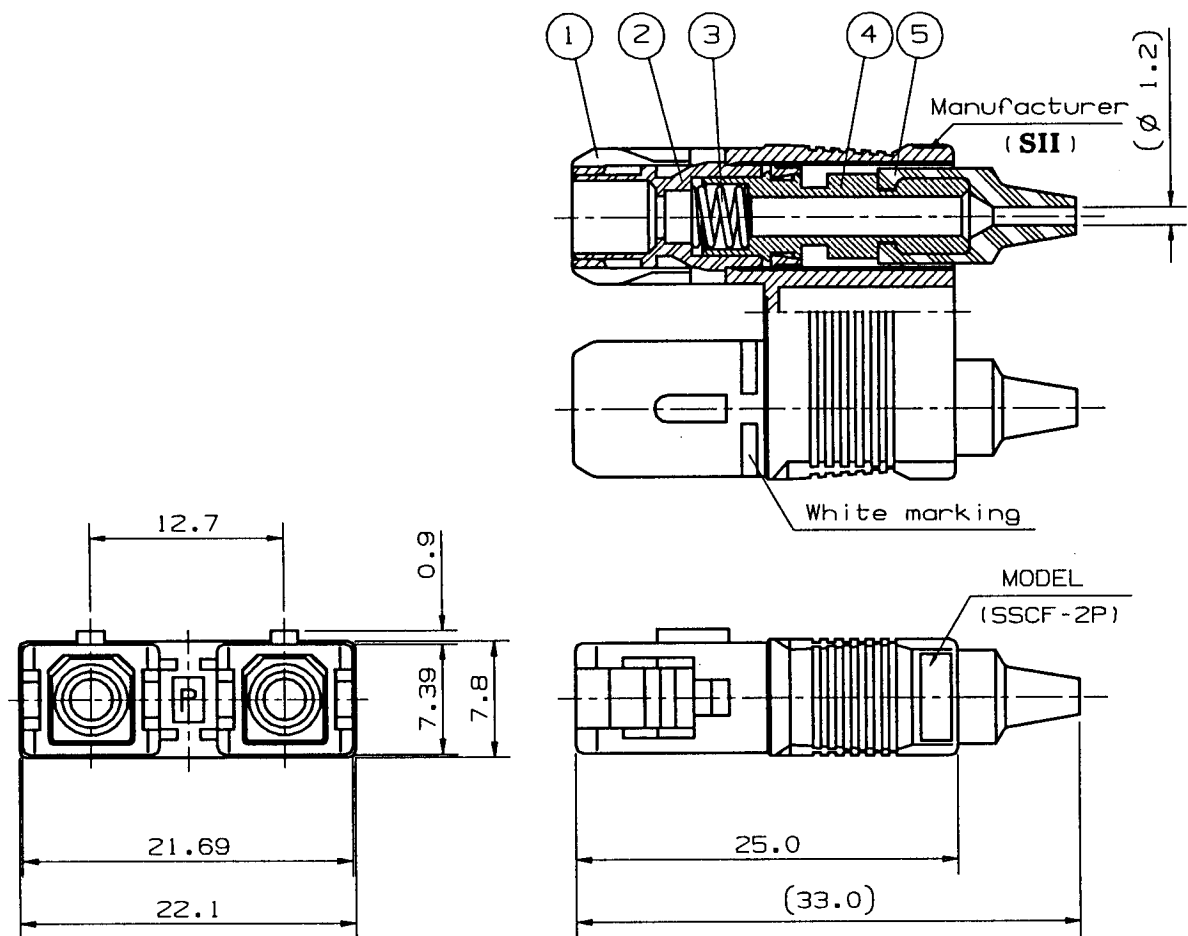
Permissible deviation in dimensions without tolerance indication is in accordance with JIS B 0405 class m, as shown in Table 3.

Table 3 General Tolerance (JIS B 0405 class m)

Basic size step (mm)		Permissible deviation (mm)
Over	Under	
0.5	3	$\pm 0.1$
3	6	$\pm 0.1$
6	30	$\pm 0.2$
30	120	$\pm 0.3$

#### 4. PACKING

The product is packed to prevent damage during shipping.



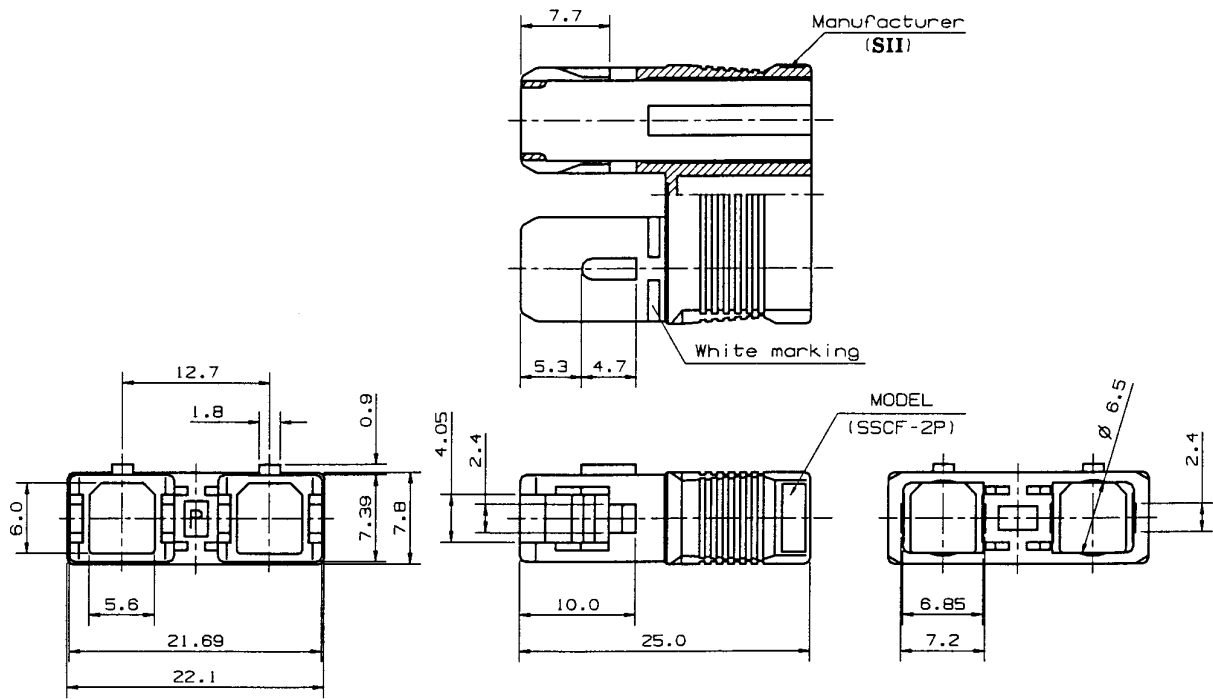
note.1: This drawing Shows the Tentatively assembled condition. In practice, the housing is not assembled like this.

note.2: This drawing does not include Caps.

Unit: mm

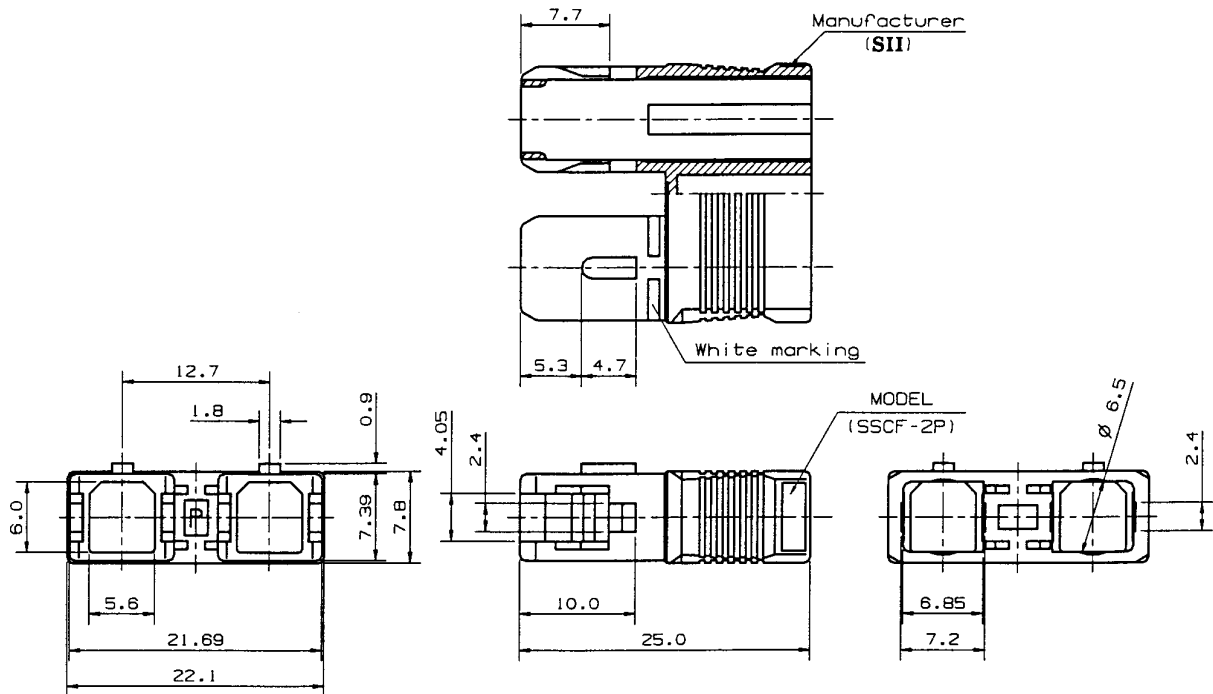
Figure 1 SSCF-2P1 HOUSING





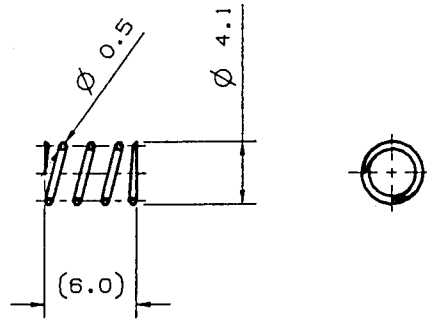
Unit: mm

Figure 2 ① Grip



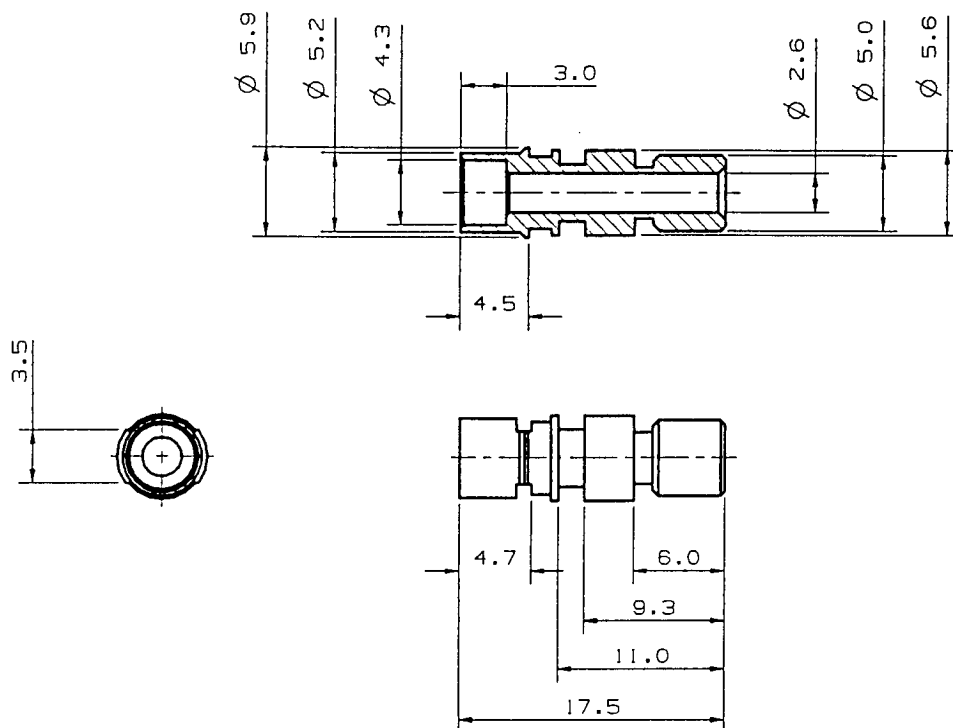
Unit: mm

Figure 3 ② Plug frame



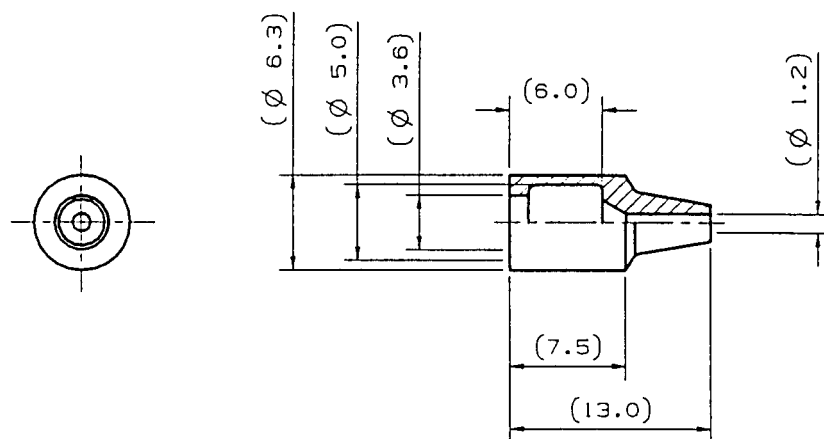
Unit: mm

Figure 4 ③ Spring



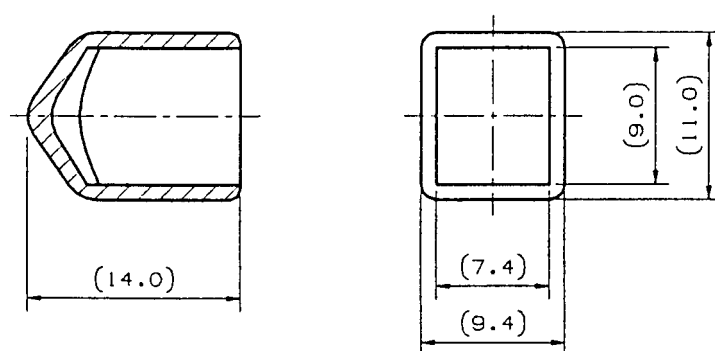
Unit: mm

Figure 5 ④ Stop ring



Unit: mm

Figure 6 ⑤ Hood



Unit: mm

Figure 7 ⑥ Cap