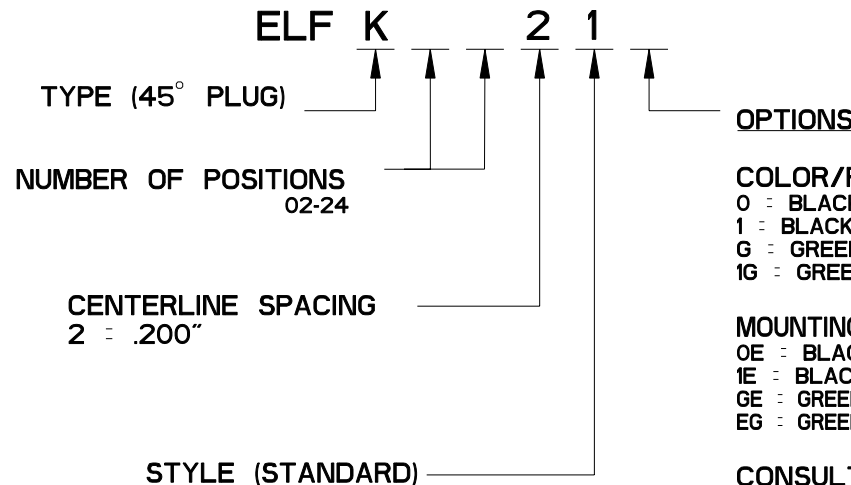


REV	ECN	APP'D
-	3600	JEC 12/11/98
A	4686	IQ 1/2/02
B	5137	

## ELFK SERIES PART NUMBERING SCHEME



### OPTIONS

#### COLOR/PLATING

0 = BLACK, TIN-LEAD (STANDARD)  
 1 = BLACK, SELECTIVE GOLD  
 G = GREEN, TIN-LEAD  
 1G = GREEN, SEL. GOLD

#### MOUNTING EARS

OE = BLACK, TIN-LEAD  
 IE = BLACK, SEL. GOLD  
 GE = GREEN, TIN-LEAD  
 EG = GREEN, SEL. GOLD

#### CONSULT PCD FOR PART NO. AND AVAILABILITY OF FOLLOWING OPTIONS:

- CUSTOM COLORS
- CUSTOM MARKING
- CUSTOM KEYING
- SELECTIVE CONTACT LOADING



**RATINGS**

CURRENT - 15A  
 VOLTAGE - 300V  
 U.L. FILE NO. E83421



**RATINGS**

CURRENT - PENDING  
 VOLTAGE - PENDING  
 CSA FILE NO. LR69703

DIN VDE 0627:1986  
 DIN VDE 0110-1:1989  
 EN 60947-1:1991  
 EN 60947-7-1:1992

CURRENT - PENDING  
 VOLTAGE - PENDING  
 TUV FILE NO. 20396

#### INSTALLATION RECOMMENDATIONS

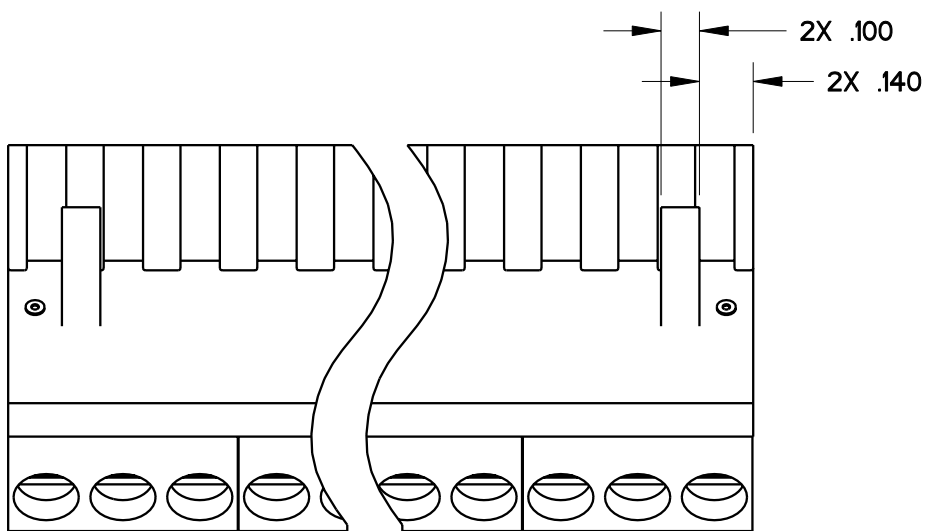
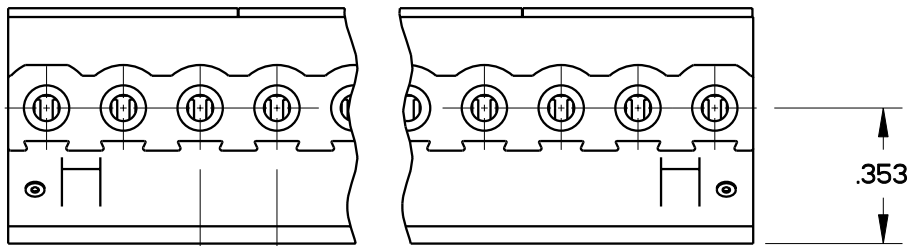
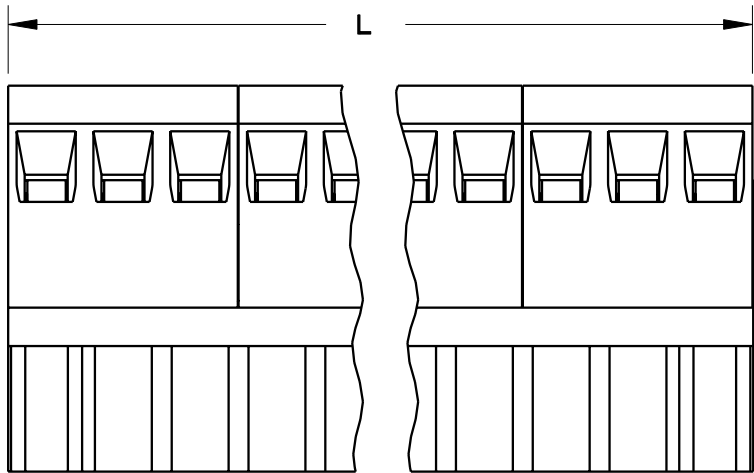
WIRE RANGE: AWG #14-26, STRANDED  
 OR SOLID; AWG #12 STRANDED  
 WIRE STRIP LENGTH: .310"  
 TIGHTENING TORQUE: 7 LB-IN.

#### MATERIALS:

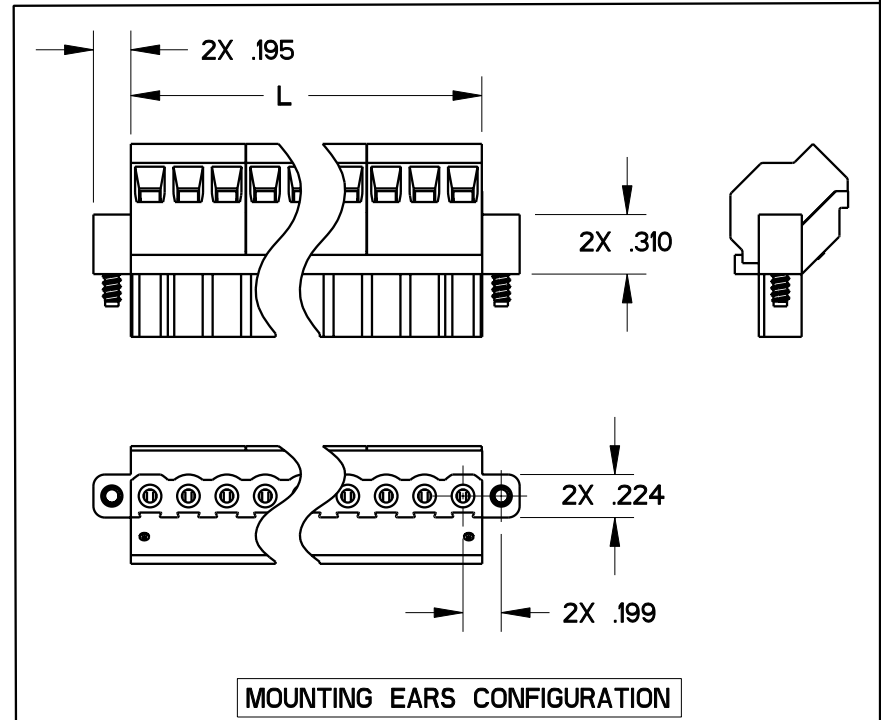
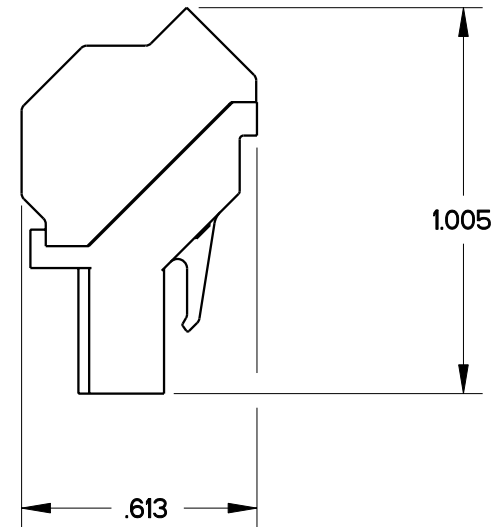
HOUSING: PPO, UL 94 V-0  
 CONTACT: COPPER ALLOY, NICKEL FINISH  
 SCREW: STEEL, NICKEL FINISH  
 WIRE CLAMP: COPPER ALLOY, NICKEL FINISH

MAX OPERATING TEMPERATURE:  
 105°C

<b>DIMENSIONS</b> ANSI Y14.5M UNITS: INCHES Pro/E FILE	<b>TOLERANCES</b> .XX ±0.01 .XXX ±0.005 ANGLES ±2.0°	<b>PROJECTION</b> 	<b>SPECIFICATION DRAWING</b> <hr/> ENGR <b>D. MANTER 10-Dec-98</b>			TITLE <b>ELFK SERIES          PLUG ASSEMBLY          45°</b>
<b>ORIGINAL          STAMPED          IN RED</b>	<i>THIS DOCUMENT CONTAINS          PROPRIETARY INFORMATION WHICH          IS THE CONFIDENTIAL PROPERTY          OF PCD, INC. PEABODY, MA, USA</i>		CHKD <hr/> APPD <b>J. CAHALY 12/11/98</b>	SIZE <b>A</b>	DWG NO. <b>ELFK02210</b>	REV <b>B</b>
			CODE: 58982	SCALE: NONE	SHEET 1 OF 2	



L- NUM OF POS X CL SPACING



MOUNTING EARS CONFIGURATION

SIZE	DWG NO.	REV
A	ELFK02210	B
CODE: 58982	SCALE: NONE	SHEET 2 OF 2