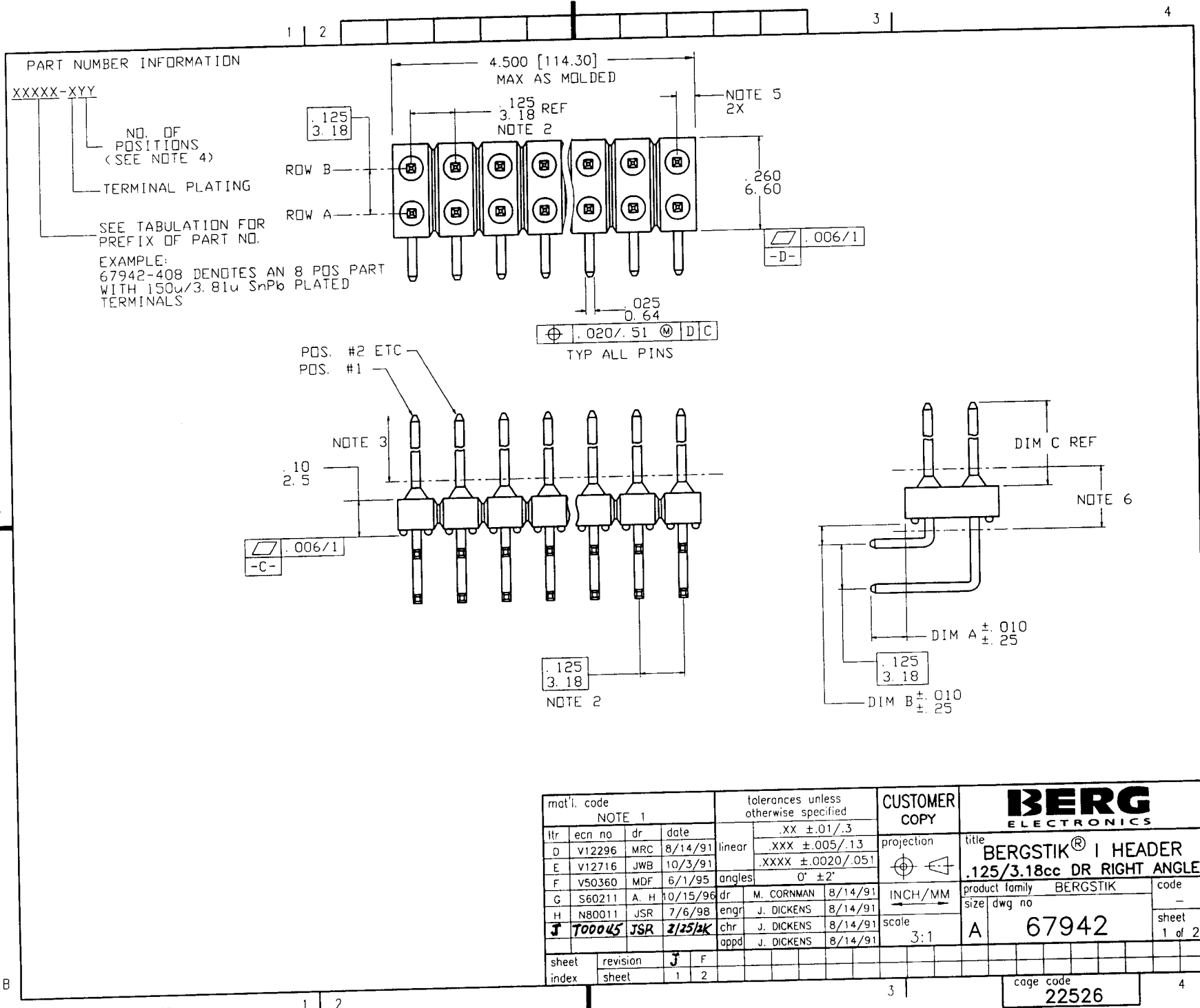
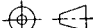
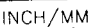


Tous droits strictement réservés. Reproduction ou communication à des tiers interdite sous quelque forme que ce soit sans autorisation écrite du propriétaire. Propriété de © BERG ELECTRONICS. Droits de reproduction BERG ELECTRONICS INC.

All rights strictly reserved. Reproduction or issue to third parties in any form whatever is not permitted without written authority from the proprietor. Property of © BERG ELECTRONICS. Copyright BERG ELECTRONICS INC.



mat'l. code				tolerances unless otherwise specified		CUSTOMER COPY		BERG ELECTRONICS			
NOTE 1						COPY					
ltr	ecn no	dr	date	linear	.XX ±.01/.3		projection 	title BERGSTIK® I HEADER			
D	V12296	MRC	8/14/91		.XXX ±.005/.13			.125/3.18cc DR RIGHT ANGLE			
E	V12716	JWB	10/3/91		.XXXX ±.0020/.051						
F	V50360	MDF	6/1/95	angles	0° ±2°		INCH/MM 	product family		code	
G	S60211	A. H	10/15/96	dr	M. CORNMAN	8/14/91		BERGSTIK		—	
H	N80011	JSR	7/6/98	enqr	J. DICKENS	8/14/91		size dwg no		sheet	
J	T00045	JSR	2/25/98	chr	J. DICKENS	8/14/91	scale	A	67942	1 of 2	
				appd	J. DICKENS	8/14/91	3:1				
sheet	revision	J	F								
index	sheet	1	2								
								cage code		4	
								22526			

PRODUCT NUMBER	DIM A	DIM B	DIM C
67942-XY	.130/3.30	.060/1.52	.230/5.84
68469-XY	NOT AVAILABLE		
68687-XY	.130/3.30	.060/1.52	.280/7.11
91275-XY	.110/2.79	.060/1.52	.393/9.98
91572-XY	NOT AVAILABLE		

PLATING VARIATIONS					
-XY	PLATING NO.	OVERPLATING	UNDERPLATING	PLASTIC COLOR	TERMINAL MATERIAL
-1YY	1	30u"/.76u Au	50u"/1.27 Ni	BLACK	3/4 HD. PHDS. BRZ.
-2YY	2	15u"/.38u Au	50u"/1.27 Ni	CREAM	3/4 HD. PHDS. BRZ.
-3YY	3	50u"/1.27 Au	50u"/1.27 Ni	BROWN	3/4 HD. PHDS. BRZ.
-4YY	4	150u"/3.81u 93/7 SnPb	-	BLACK	3/4 HD. PHDS. BRZ.

NOTES:

- ① MOLDING MATERIAL: 20% GLASS FILLED NYLON
RATED PER UL 94 V-0.
- ② MEASURED AT DATUM -C- WITH PART IN
RESTRAINED CONDITION.
- ③ 5 LBS / 2.3 KG TERMINAL PUSH-OUT FORCE
IN EITHER DIRECTION.
- ④ MIN NO. OF POSITIONS - 2.
MAX NO. OF POSITIONS - 72.
- ⑤ .06/1.5 MAX AS MOLDED (MOLDED AS 36 POS
ONLY) .085/2.16 MAX WHEN BROKEN TO
SPECIFIED LENGTHS.
- ⑥ .05/1.27 MAX FLASH ALLOWED IN THESE AREAS.
7. TWO SIDES OF LEAD-IN ON PINS NOT PLATED.
TYP BOTH ENDS.
- ⑧ RECESSED AREA MAY APPEAR WHERE INDICATED
ON PDS. 1, 8, 15, 22, 29 & 36. (BOTH ENDS).

mat'l. code				tolerances unless otherwise specified		CUSTOMER COPY	BERG ELECTRONICS		
ltr	ecn no	dr	date	linear	.XX ±.01/X ±.3	projection	title		
F					.XXX ±.005/XX ±.13		BERGSTIK® I HEADER		
				angles	XXXX ±.0020/XXX ±.051		.125/3.18cc DR RIGHT ANGLE		
				dr	0° ±2'	INCH/MM	product family	code	
				enr	M. CORNMAN 8/14/91	scale 1:1	BERGSTIK	-	
				chr	J. DICKENS 8/14/91		size	dwg no	sheet
				appd	J. DICKENS 8/14/91		A	67942	2 of 2
sheet index	revision sheet								