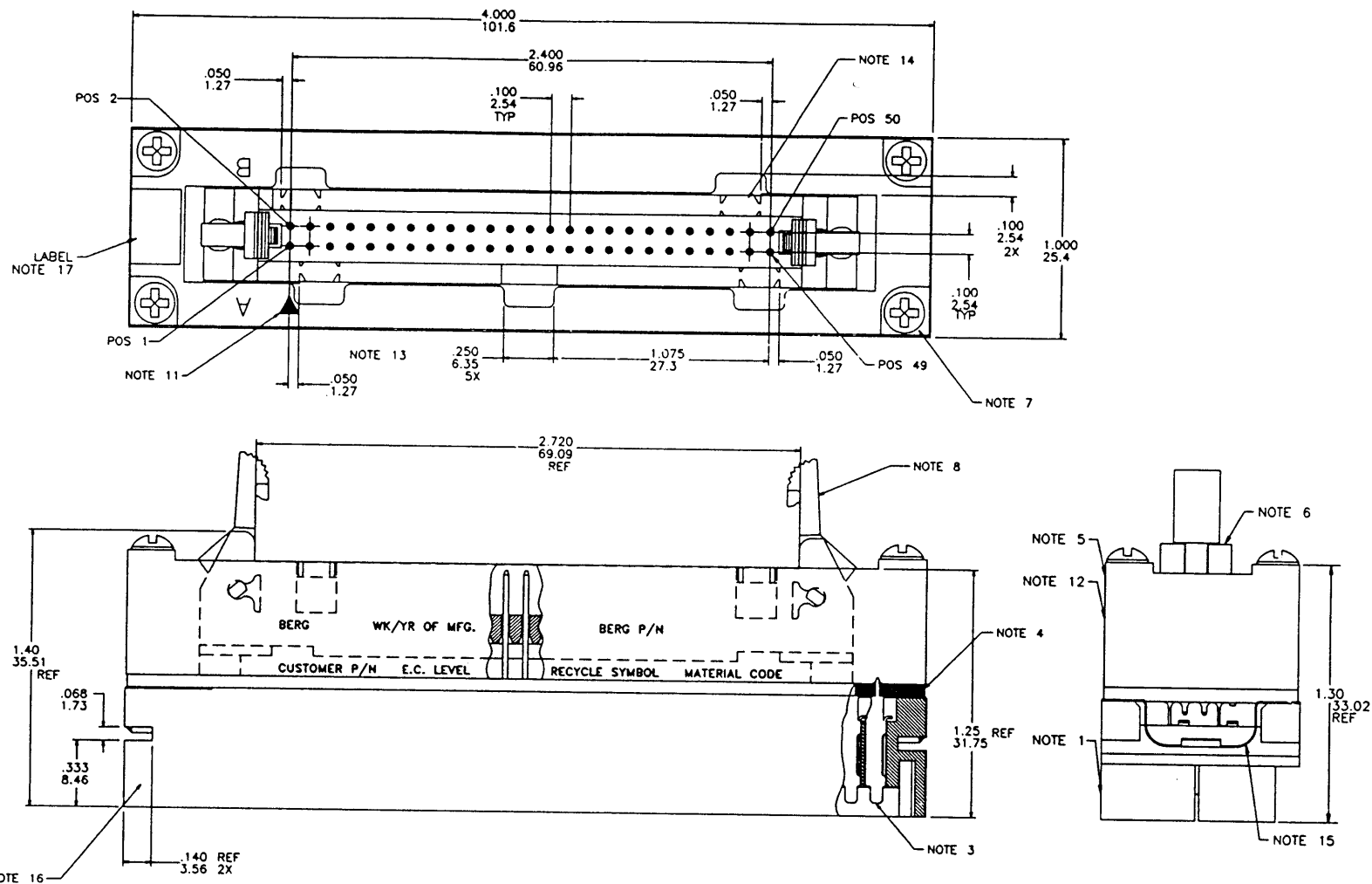


→ IF RED ←

PRODUCT NUMBER

SEE TABLE



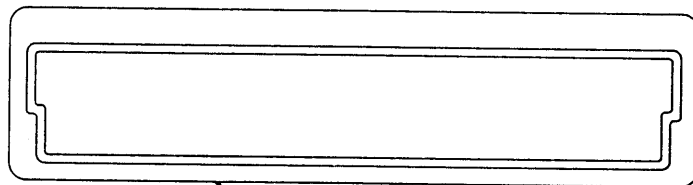
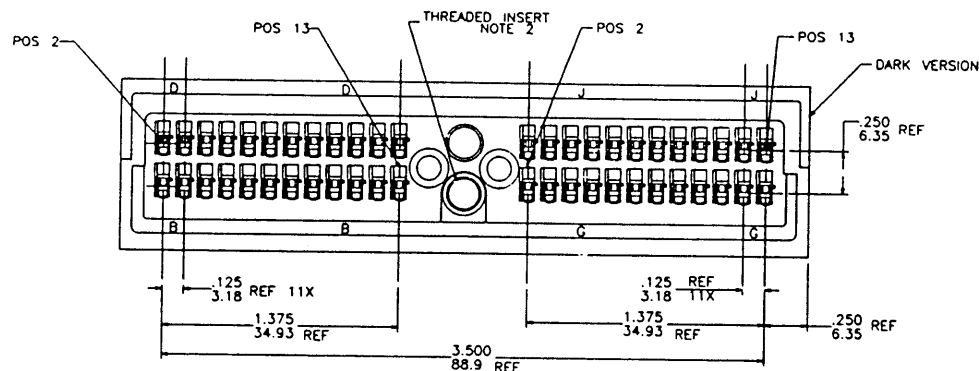
REVISIONS				SHEET INDEX	ISSUE															MAY	JUN	JUL	AUG	SEP	OCT	NOV	DEC	CUSTOMER COPY	TITLE
REV	ECN/DDR#	BY	DATE		SH NO.	1	2	3	4	5	6	7	8	9	10	11	12												
A	V00089	JM	5/5/90																										
B	V23422	JM	10/13/92																										
C	V23963	TWL	3/25/93																										
D	V31428	BMM	12/14/93																										
E	V40430	BMM	5/25/94																										
F	V40998	BMM	6/13/94																										

TOLERANCES UNLESS OTHERWISE SPECIFIED	FINISH	PRODUCT FAMILY	ADAPTOR	UNIT	INCH	MILL	SCALE	SIZE	DRG. NO.	88207	SHEET	1 OF 3
LINEAR	.0002 .005 / .002 .13	ADAPTOR					4:1	D				
ANGLES	.0002 .0020 / .0002 .051											
	0° ± 2											

BERG ELECTRONICS	50 POSITION GROUND CLIP ADAPTOR	FORM E-3087 REV 8/93
------------------	---------------------------------	----------------------

NOTE: THIS DOCUMENT IS THE PROPERTY OF AND CONTAINS PROPRIETARY INFORMATION OF BERG ELECTRONICS, INC. NO PART OF THE INFORMATION SHOWN ON THIS DOCUMENT MAY BE USED IN ANY WAY WITHOUT THE WRITTEN CONSENT OF BERG ELECTRONICS, INC.

PRODUCT NUMBER	HOUSING TYPE NOTE 1	BACK COVER COLOR NOTE 5	CUSTOMER P/N	CUSTOMER EC LEVEL	RECYCLE SYMBOL	MATERIAL CODE
88207-001	METALLIZED DARK	DARK GRAY	34F5315	EC-236254	)PC(	23-943H
88207-002	METALLIZED DARK	DARK GRAY	11G4541	EC-236254	)PC(	23-943H
88207-003	METALLIZED DARK	DARK GRAY	11G4579	—	—	—



DUST COVER  
NOTE 10

NOTES:

- THE HOUSING IS MADE FROM UNFILLED POLYCARBONATE WITH A FLAMMABILITY RATING OF 94V-0. THE COLOR IS DEFINED IN PART NUMBER CHART.
- THE THREADED INSERT IS A #8-32 UNC 2B STAINLESS STEEL INSERT.
- THE TERMINALS ARE MADE FROM PHOSPHOR BRONZE. THEY ARE PLATED WITH 30u/.76uM GOLD OVER 50u/1.27uM NICKEL IN THE CONTACT AREA.
- THE PRINTED CIRCUIT BOARD IS MADE FROM .062/1.57 THICK COPPER CLAD GLASS FIBER BASE EPOXY RESIN.
- THE BACK COVER IS MADE FROM POLYCARBONATE WITH A FLAMMABILITY RATING OF 94V-0. THE COLOR IS DEFINED IN PART NUMBER CHART.
- THE HEADER USED IN THIS ASSEMBLY IS A 50 POS HEADER ON A .100/2.54 \* .100/2.54 GRID. THE HOUSING MATERIAL IS GLASS FILLED POLYESTER WITH A FLAMMABILITY RATING OF 94V-0. THE COLOR IS BLACK. THE PINS ARE MADE FROM 3/4 HD. PHOSPHOR BRONZE WITH 30u/.76uM GOLD OVER 50u/1.27uM NICKEL.
- THE ASSEMBLY IS HELD TOGETHER WITH SELF-TAPPING SCREWS.
- LONG LOCKING LATCHES ARE USED ON ASSEMBLIES WHERE IN THE CLOSED POSITION THE LATCH LOCKS AT .570/14.48.
- THE SERPENT CONTACT TO HEADER CONFIGURATION IS SUMMARIZED IN THE WIRING SCHEMATICS CHARTS.
- ALL CONNECTORS ARE SHIPPED WITH A FRONT DUST COVER. THE COVER IS MADE FROM PVC WITH A FLAMMABILITY RATING OF 94V-0. THE COLOR IS CLEAR.
- THE TRIANGLE ON THE BACKCOVER INDICATES PIN POS. NO. 1.
- BERG, WEEK/YEAR OF MFG., BERG P/N, CUSTOMER P/N, EC LEVEL, RECYCLE SYMBOL AND MATERIAL CODE TO BE PRINTED IN THE AREA INDICATED. SEE CHART FOR INFORMATION.
- THE CENTER TAB KEY IS REMOVED AT ALL TIMES.
- BREAKAWAY SLOTS (4) FOR PROGRAMMABLE KEYS.
- THE GROUNDING CLIP IS LOCATED BETWEEN THE P.C.B. AND THE METALLIZED HOUSING. THE CLIP IS HELD IN PLACE BY THE SELF-TAPPING SCREWS.
- ELECTRICAL TESTER VERIFICATION MARK IS LOCATED ON THIS SURFACE.
- UNMARKED WHITE LABEL PRESENT ON PRODUCT - APPLIED AS SHOWN.

REVISIONS				SHEET INDEX	ISSUE
REV	ECN/DOR	BY	DATE	SH NO.	1
F					

TOLERANCES UNLESS OTHERWISE SPECIFIED			
LINEAR	.002 .01 / .02 .3	FINISH	
ANGLES	.0002 .0020 / .0002 .051	PRODUCT FAMILY	ADAPTOR

MAY			
DR	J. MUSTARD	NEW	5/3/90
ENGR	J. WALDEN	5/3/90	
CHK	J. WALDEN	5/3/90	
APPR	J. WALDEN	5/3/90	

CUSTOMER COPY			
THIRD ANGLE PROJ			
UNIT	INCH		

BERG ELECTRONICS			
TITLE	50 POSITION GROUND CLIP ADAPTOR		
SCALE	3:1	SIZE	D
DRWG. NO.	88207		
SHEET	2 OF		

NOTE: THIS DOCUMENT IS THE PROPERTY OF AND ENCLOSED PROPRIETARY INFORMATION OF BERG ELECTRONICS, INC. NO PART OF THE INFORMATION SHOWN ON THIS DOCUMENT MAY BE USED IN ANY WAY WITHOUT THE WRITTEN CONSENT OF BERG ELECTRONICS, INC.

FORM E-3087 REV 8/93

PRODUCT NUMBER

SEE TABLE

88207-001

DARK

FROM SERPENT PIN	TO HEADER PIN	FROM SERPENT PIN	TO HEADER PIN
D 2	1	B 2	GROUND
3	GROUND	3	3
4	5	4	GROUND
5	GROUND	5	7
6	9	6	11
7	GROUND	7	GROUND
8	GROUND	8	13
9	15	9	GROUND
10	GROUND	10	17
11	19	11	GROUND
12	GROUND	12	21
D 13	23	B 13	GROUND
J 2	27	G 2	GROUND
3	GROUND	3	29
4	31	4	GROUND
5	GROUND	5	33
6	37	6	35
7	GROUND	7	GROUND
8	GROUND	8	39
9	41	9	GROUND
10	GROUND	10	43
11	45	11	GROUND
12	GROUND	12	47
J 13	49	G 13	GROUND

• THE FOLLOWING ON THE HEADER MUST GO TO GROUND:  
2,4,6,8,10,12,14,16,18,20,22,24,28,30,32,34,  
36,38,40,42,44,46,48,50

• HEADER PINS 25 AND 26 ARE OPEN

88207-002

DARK

FROM SERPENT PIN	TO HEADER PIN	FROM SERPENT PIN	TO HEADER PIN
D 2	1	B 2	GROUND
3	GROUND	3	3
4	5	4	GROUND
5	GROUND	5	7
6	9	6	OPEN
7	GROUND	7	GROUND
8	GROUND	8	13
9	15,23,37	9	GROUND
10	GROUND	10	17
11	19	11	GROUND
12	GROUND	12	21
D 13	OPEN	B 13	GROUND
J 2	OPEN	G 2	GROUND
3	GROUND	3	29
4	31	4	GROUND
5	GROUND	5	33
6	OPEN	6	OPEN
7	GROUND	7	GROUND
8	GROUND	8	39
9	41	9	GROUND
10	GROUND	10	43
11	45	11	GROUND
12	GROUND	12	27,35,47
J 13	49	G 13	GROUND

• THE FOLLOWING ON THE HEADER MUST GO TO GROUND:  
2,4,6,8,10,12,14,16,18,20,22,24,28,30,32,34,  
36,38,40,42,44,46,48,50

• HEADER PIN 11 ON HEADER IS OPEN.

• COMMON HEADER PIN 25 AND 26 TO EACH OTHER.

88207-003

DARK

FROM SERPENT PIN	TO HEADER PIN	FROM SERPENT PIN	TO HEADER PIN
D 2	1	B 2	GROUND
3	GROUND	3	3
4	5	4	GROUND
5	GROUND	5	7
6	9	6	OPEN
7	GROUND	7	GROUND
8	GROUND	8	13
9	23,37,45	9	GROUND
10	GROUND	10	17
11	19	11	GROUND
12	GROUND	12	21
D 13	OPEN	B 13	GROUND
J 2	OPEN	G 2	GROUND
3	GROUND	3	29
4	31	4	GROUND
5	GROUND	5	33
6	OPEN	6	OPEN
7	GROUND	7	GROUND
8	GROUND	8	39
9	41	9	GROUND
10	GROUND	10	43
11	15	11	GROUND
12	GROUND	12	27,35,47
J 13	49	G 13	GROUND

• THE FOLLOWING ON THE HEADER MUST GO TO GROUND:  
2,4,6,8,10,12,14,16,18,20,22,24,28,30,32,34,  
36,38,40,42,44,46,48,50

• HEADER PIN 11 ON HEADER IS OPEN.

• COMMON HEADER PIN 25 AND 26 TO EACH OTHER.

REVISIONS				SHEET INDEX	ISSUE					
REV	ECN/DOR#	BY	DATE	SH NO.	1					
E										
TOLERANCES UNLESS OTHERWISE SPECIFIED										
.002 .01 / .02 3										
.0002 .005 / .002 .13										
.0002 .0020 / .0002 .051										
ANGLES 0° 2'										
MAY										
ON MUSTARD 5/3/90										
ENGR J WALDEN 5/3/90										
CHK J WALDEN 5/3/90										
APPRO J WALDEN 5/3/90										
CUSTOMER COPY										
THIRD ANGLE PROJ										
UNIT INCHES										
SCALE 3:1										
SIZE D										
DWG NO. 88207										
SHEET 3 OF 3										

**BERG**  
ELECTRONICS

TITLE  
50 POSITION GROUND CLIP  
ADAPTOR

NOTE: THIS DOCUMENT IS THE PROPERTY OF AND CONTAINS PROPRIETARY INFORMATION OF BERG ELECTRONICS, INC.

NO PART OF THE INFORMATION SHOWN ON THIS DOCUMENT MAY BE USED IN ANY WAY WITHOUT THE WRITTEN CONSENT OF BERG ELECTRONICS, INC.

FORM E-3587 REV 8/93