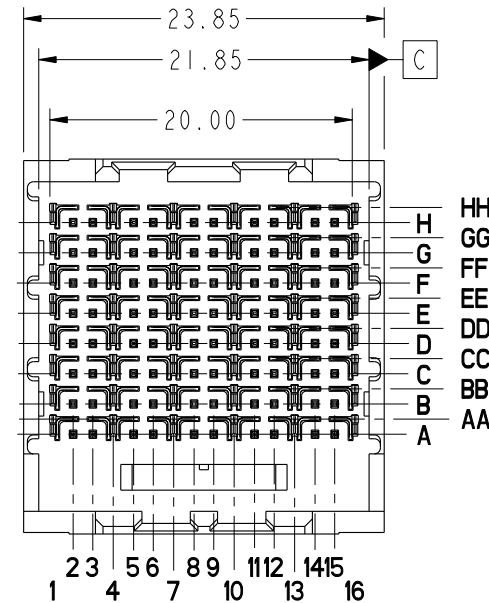
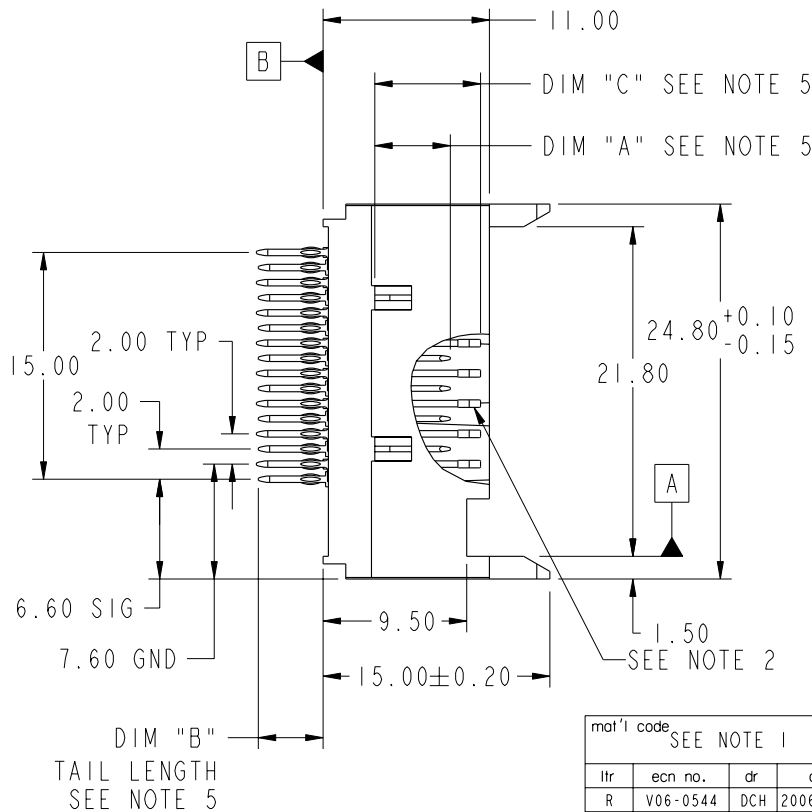




This document is the property of and embodies
CONFIDENTIAL and PROPRIETARY information of FCI.
No part of the information shown on this
document may be used in any way or disclosed
to others without the written consent of FCI.
Copyright FCI.

PRODUCT NUMBER	CONTACT PLATING PERFORMANCE LEVEL	PRESS-FIT TAIL PLATING
74750-1YY	TELCORDIA CO	STANDARD (SnPb)
74750-1YYLF	TELCORDIA CO	LEAD FREE (Sn)

SEE NOTE 9



mat'l code SEE NOTE 1				tolerances unless otherwise specified		CUSTOMER		FCI www.fciconnect.com	
ltr	ecn no.	dr	date	linear	0.X ± 0.3	projection	COPY	title VERTICAL SIGNAL HDR. 8 ROW P.F. 40 PAIR SPECIAL LOAD	
R	V06-0544	DCH	2006-06-09		0.XX ± 0.10				
S	V08-0125	HTB	2008-03-26		0.XXX ± 0.050				
-	-	-	-	angles	0° ± 2°	MM scale 2:1	A	product family METRAL 3000	
L	V04-0070	DAI	2004-02-04	dr	S. KLINE	2000-04-21		size	code
M	V04-0422	DAI	2004-05-06	enrg	J. ORTEGA	2000-04-21		dwg no	213
N	V04-0661	TAB	2004-06-22	chr	A. RAISTRICK	2000-04-21		74750	sheet 1 of 5
P	V05-0925	DAI	2005-10-24	appd	J. ORTEGA	2000-04-21			
sheet index	revision sheet	S 1	S 2	S 3	S 4	S 5			

Pro/E

cage code 22526

4

PDM: Rev:S

STATUS: Released

Printed: Dec 01, 2010

This document is the property of and embodies
CONFIDENTIAL and PROPRIETARY information of FCI.
No part of the information shown on this
document may be used in any way or disclosed
to others without the written consent of FCI.
Copyright FCI.

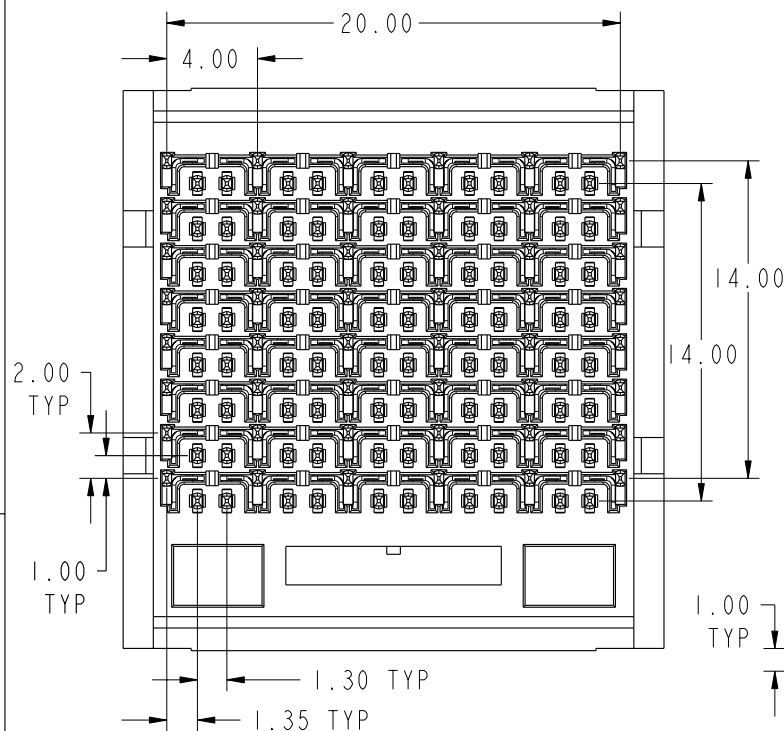


PRODUCT NUMBER	DIM "A" SIGNAL PIN MATING LENGTH	DIM "C" GROUND PIN MATING LENGTH	DIM "B" SIGNAL PIN TAIL LENGTH	DIM "B" GROUND PIN TAIL LENGTH
74750-101	5.00	7.00	4.30	4.30
74750-101LF	5.00	7.00	4.30	4.30
74750-102	5.75	7.00	4.30	4.30
74750-102LF	5.75	7.00	4.30	4.30
74750-103	6.50	7.00	4.30	4.30
74750-103LF	6.50	7.00	4.30	4.30
74750-104	5.00	6.25	4.30	4.30
74750-104LF	5.00	6.25	4.30	4.30
74750-110	5.00	7.00	3.40	3.40
74750-110LF	5.00	7.00	3.40	3.40
74750-111	5.75	7.00	3.40	3.40
74750-111LF	5.75	7.00	3.40	3.40
74750-112	6.50	7.00	3.40	3.40
74750-112LF	6.50	7.00	3.40	3.40
74750-114	5.00	6.25	3.40	3.40
74750-114LF	5.00	6.25	3.40	3.40

mat'l code SEE NOTE 1				tolerances unless otherwise specified		CUSTOMER		 www.fciconnect.com		
ltr	ecn no.	dr	date	linear	0.X ±0.3	COPY		 projection	title VERTICAL SIGNAL HDR. 8 ROW P.F. 40 PAIR SPECIAL LOAD	
S					0.XX ±0.10					
					0.XXX ±0.050					
				angles	0° ±2°	 MM				
				dr	S. KLINE	2000-04-21	 scale 1:1	product family	METRAL 3000	code
				enrg	J. ORTEGA	2000-04-21		size	dwg no	213
				chr	A. RAISTRICK	2000-04-21		A	74750	sheet 2
				appd	J. ORTEGA	2000-04-21				
sheet index	revision sheet									



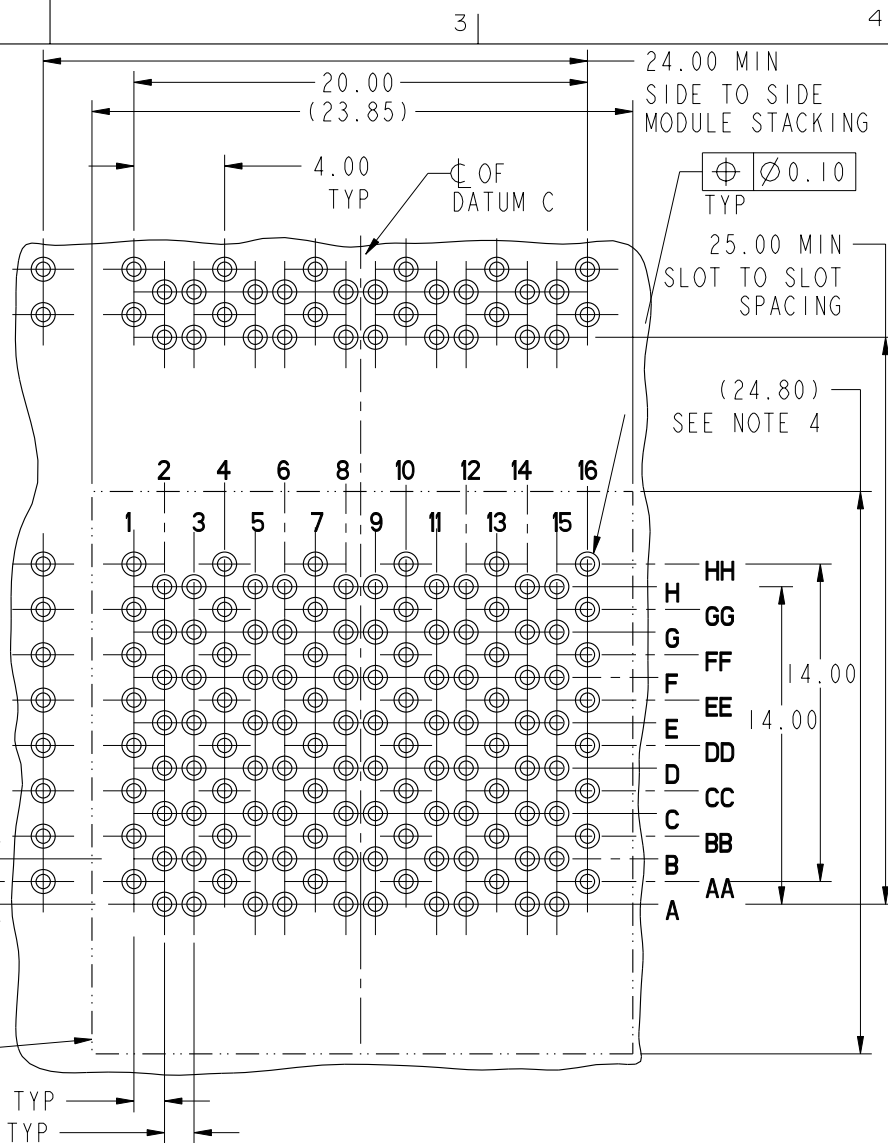
PRODUCT NUMBER
SEE SHEET 1



BOARD SIDE VIEW
SCALE 3:1

CONNECTOR
OUTLINE

1.35 TYP
1.30 TYP



PRESS-FIT HOLES	SIZE RANGE	NOMINAL
HOLE DIAMETER AFTER PLATING	$\varnothing 0.55 - \varnothing 0.65$	$\varnothing 0.60$
DRILLED HOLE	$\varnothing 0.68 - \varnothing 0.73$	$\varnothing 0.70$
COPPER PLATING	0.025 MIN	
SnPb PLATING	0.005 - 0.015	

mat'l code SEE NOTE 1				tolerances unless otherwise specified			CUSTOMER		FCi www.fciconnect.com				
ltr	ecn no.	dr	date	linear	0. X ± 0.3			COPY		title VERTICAL SIGNAL HDR. 8 ROW P.F. 40 PAIR SPECIAL LOAD			
S					0. XX ± 0.10			projection					
					0. XXX ± 0.050								
				angles	0° ± 2°								
		dr			S. KLINE	2000-04-21	 MM scale 1:1		product family		METRAL 3000	code	
		enrg			J. ORTEGA	2000-04-21			size	dwg no	213		
		chr			A. RAISTRICK	2000-04-21			74750		sheet		
		appd			J. ORTEGA	2000-04-21			A		3		
sheet index	revision sheet												

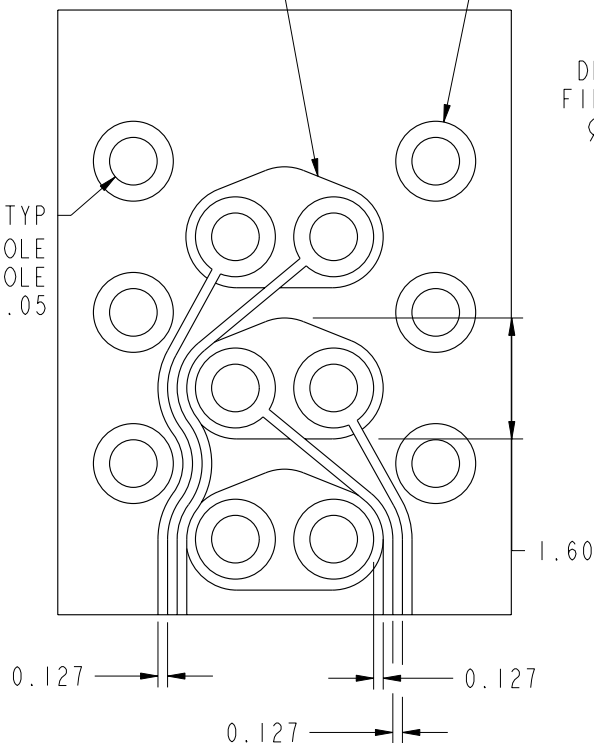


PRODUCT NUMBER
SEE SHEET 1

SUGGESTED GROUND CLEARANCE
PATTERN

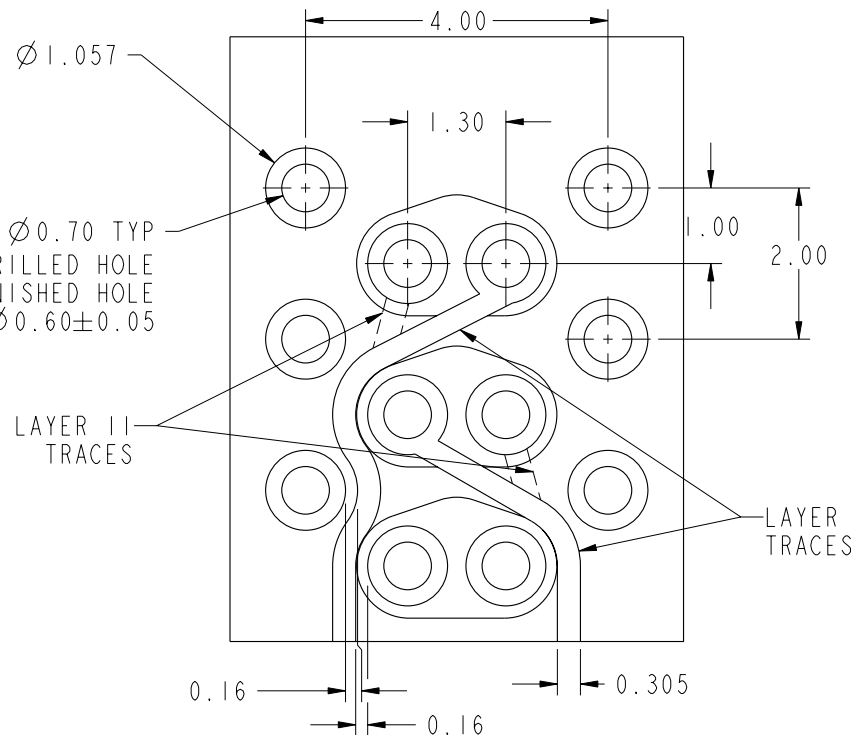
Ø 1.057
PAD SIZE

Ø 0.70 TYP
DRILLED HOLE
FINISHED HOLE
Ø 0.60 ± 0.05



OPTION A (EDGE COUPLED)
DIFFERENTIAL
PCB TRACE LAYOUT

- 0.127 mm [0.005 in] TRACES MAX
WITH 0.127 mm [0.005 in] GAPS
- 4 TRACES (2 PAIRS) PER LAYER



OPTION B (BROADSIDE COUPLED)
DIFFERENTIAL
PCB TRACE LAYOUT

- UP TO 0.305 mm [0.012 in]
TRACES MAX WITH 0.16 mm
[0.006 in] GAPS
- 2 TRACES PER LAYER


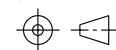
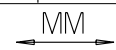
mat'l code				tolerances unless otherwise specified		CUSTOMER		FCI	
SEE NOTE 1						COPY		www.fciconnect.com	
ltr	ecr no.	dr	date	linear	0.X ± 0.3	projection		title	
S					0.XX ± 0.10				
					0.XXX ± 0.050				
				angles	0° ± 2°	MM		product family	
				dr	S. KLINE 2000-04-21				
				enr	J. ORTEGA 2000-04-21				
				chr	A. RAISTRICK 2000-04-21	scale	A	product family	
				appd	J. ORTEGA 2000-04-21				
sheet	revision							size	
index	sheet							dwg no	
								74750	
								code	
								213	
								sheet	
								4	

PRODUCT NUMBER

SEE SHEET 1

NOTES:

1. BODY MATERIAL: LIQUID CRYSTAL POLYMER 30% GF
FLAME RETARDANT PER UL 94-V0.
PIN MATERIAL: COPPER ALLOY
 2. DIM "C" REFERENCES GROUND PIN AND
DIM "A" REFERENCES SIGNAL PIN.
 3. PRODUCT MARKING: PART NUMBER AND BATCH ID.
 4. REFERENCE METRAL 3000 APPLICATION SPEC GS-20-012
FOR MODULE APPLICATION AND REPAIR REQUIREMENTS.
 5. DIMENSIONS AFTER INSERTION INTO CIRCUIT BOARD WITH
FCI APPROVED TOOLING.
 6. REFERENCE METRAL 3000 PRODUCT SPEC GS-12-138.
 7. PRODUCT WHERE THE PART NUMBER ENDS IN "LF" MEET
EUROPEAN UNION DIRECTIVES AND OTHER COUNTRY
REGULATIONS AS DESCRIBED IN GS-22-008.
- ALL PRODUCTS WILL WITHSTAND EXPOSURE TO 260° C FOR
60 SECONDS IN A CONVECTION, INFRA-RED OR VAPOR PHASE
REFLOW OVEN.
8. FOR LEAD FREE PART NUMBERS ADD "LF" SUFFIX.
EXAMPLE: 74570-1YYLF
 9. COMPANY LOGO TO BE LOCATED IN THIS AREA.

mat'l code SEE NOTE 1				tolerances unless otherwise specified				CUSTOMER		 www.fciconnect.com					
ltr	ecn no.	dr	date	linear	0.X ±0.3		COPY			title VERTICAL SIGNAL HDR. 8 ROW P.F. 40 PAIR SPECIAL LOAD					
S					0.XX ±0.10		projection								
					0.XXX ±0.050										
				angles	0° ±2°				 scale 1 : 1						
		dr		S. KLINE	2000-04-21	product family		METRAL 3000					code		
		enrg		J. ORTEGA	2000-04-21	size		dwg no					213		
		chr		A. RAISTRICK	2000-04-21	A		74750					sheet		
		appd		J. ORTEGA	2000-04-21								5		
sheet index		revision sheet													

title
VERTICAL SIGNAL HDR. 8 ROW
P.F. 40 PAIR SPECIAL LOAD

product family METRAL 3000 code

size dwg no 213

74750 sheet

5

cage code 22526