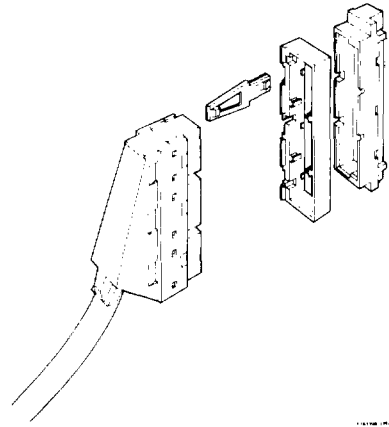


Round Conductor, Round Cable Discrete Crimp-to-Wire Connectors

2.54 mm (0.100 in.) Centerlines

DIN Polarizing and Latching Triple Row Cable Connector



Features

- Latching/polarizing frames snap on to Berg Electronics DIN shrouds, vertical headers, and right angle headers.
- Compatible with Berg Electronics' DIN round and flat cable connectors.

Options

- Extended latch for accessibility.

Technical Data

Locking frame

- Material Modified polyphenylene oxide (UL94 V-1)
- Color Black
- Operating Temperature 40°C to +125°C

Latch

- Material Glass-filled thermoplastic polyester (UL 94 V-0)

- Color Gray
- Operating Temperature -55°C to +125°C
- Polarization Configuration of plastic parts

Packaging

- Bags

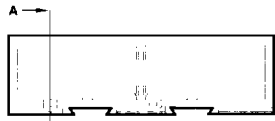
Customer Support Materials

Description	Order No.	Description	Order No.
Customer Product Drawings	By Part Number	Application Drawings	TA 312, 313
Product Samples	Upon Request		

Description



1 MODULAR FRAME

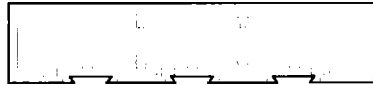


2 MODULAR FRAME

14.75 mm
(0.580 in.)



SECTION A A



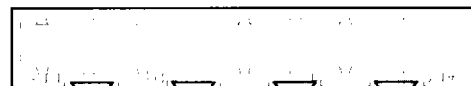
3 MODULAR FRAME



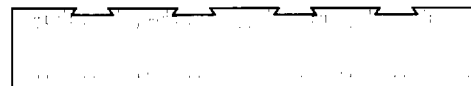
4 MODULAR FRAME



4 MODULAR FRAME (REVERSED)



3 X 32 POSITION MODULAR FRAME



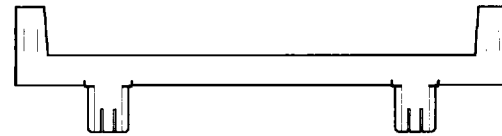
3 X 32 POSITION REVERSED FRAME



EXTENDED LATCH



MODULAR LATCH



LATCH FOR 64 POSITION FLAT CABLE CONNECTOR

A163396 0970

Ordering Data

Description	Part numbers
1 module latching frame	65184-001
2 modules latching frame	65185-001
3 modules latching frame	65186-001
4 modules latching frame	65183-001
Reversed 4 modules latching frame	68347-001
3 × 32 pos. latching frame	65188-001
Reversed 3 × 32 pos. latching frame	77429-001
Modular latch	65182-001
Extended latch	66998-001
Latch for 2 × 32 pos. flat cable connector	65187-001

Ordering data shown is for our standard product offering. For non-standard or custom products, contact your authorized Berg Electronics representative.