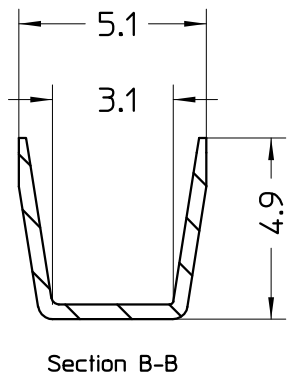
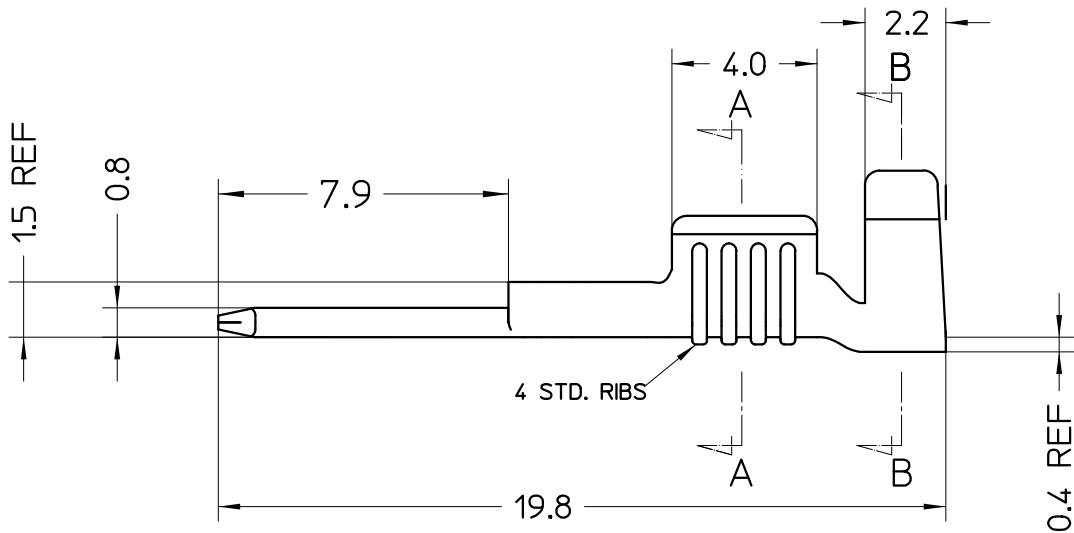
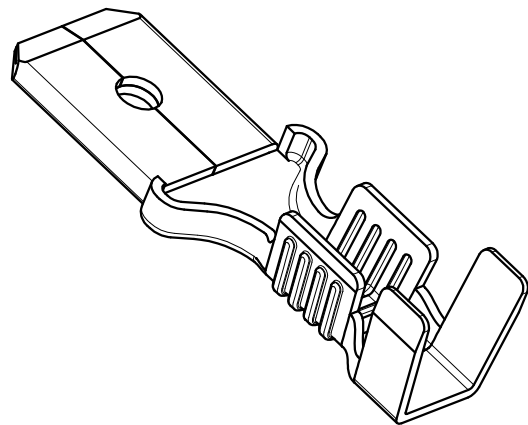
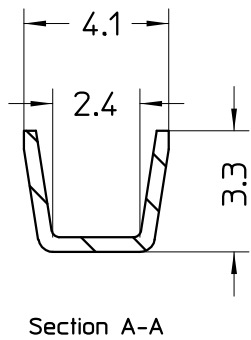
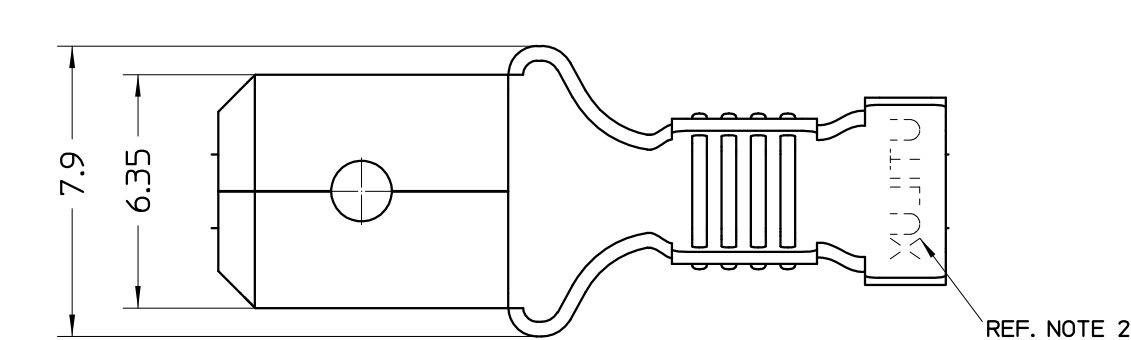


THIS INFORMATION IS CONFIDENTIAL AND PROPRIETARY TO TYCO ELECTRONICS CORPORATION AND ITS WORLDWIDE SUBSIDIARIES AND AFFILIATES. IT MAY NOT BE DISCLOSED TO ANYONE OTHER THAN TYCO ELECTRONICS PERSONNEL WITHOUT WRITTEN AUTHORIZATION FROM TYCO ELECTRONICS CORPORATION, HANOVER, PENNSYLVANIA, USA.

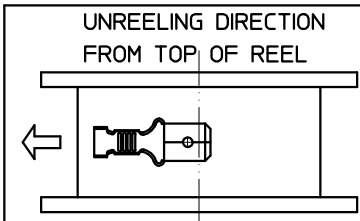
THIS DRAWING IS UNPUBLISHED. RELEASED FOR PUBLICATION
COPYRIGHT - BY TYCO ELECTRONICS CORPORATION. ALL RIGHTS RESERVED.

LOC	DIST	REVISIONS					
		P	LTR	DESCRIPTION	DATE	DWN	APVD
—	—		0	RE-DRAWN WAS UTILUX 01.01192.01	—	—	—



NOTES:

- THIS PRODUCT IS UL APPROVED.
- 'UTILUX' OR 'AMP' LOGO STAMPED AS REQUIRED.
- WIRE RANGE
CONDUCTOR: 0.70mm² - 1.5mm²
INSULATION DIA: 2.4mm - 2.9mm



ELECTRO-TIN		BRASS		TAB QC 6.3 (H1192-ET)		1-1627025-2	
NATURAL		NICKEL SILVER		TAB QC 6.3 (H1192-B)		1-1627025-1	
NATURAL		BRASS		TAB QC 6.3 (H1192)		1-1627025-0	
FINISH		MATERIAL		DESCRIPTION (UTILUX P/N)		PART No.	
THIS DRAWING IS A CONTROLLED DOCUMENT.				<div><div>tyco</div><div>Tyco Electronics Corporation</div><div>Electronics</div><div>AUSTRALIA</div></div>			
ALL DIMENSIONS IN mm:		DWN: H.THA1 11.2.03					
		CHK: W.RIEDE 11.2.03					
TOLERANCES UNLESS OTHERWISE SPECIFIED:		APVD: P.TIMBRELL11.2.03		NAME: TAB QC 6.3			
DIMENSION (mm) TOLERANCE(±mm)		PRODUCT SPEC:					
LESS THAN 10 0.4		APPLICATION SPEC:					
OVER 10 TO 30 0.5		-		SIZE		CAGE CODE	
OVER 30 TO 80 0.7		-		DRAWING NO		RESTRICTED TO	
OVER 80 TO 250 1.0		WEIGHT: -		A3		-	
ANGLES ±2°							
MATERIAL		FINISH					
REF. BLOCK		REF. BLOCK					
CUSTOMER DRAWING				SCALE		SHEET	
				5:1		1 OF 1	
						REV 0	