

# SMD Shielded Power Chokes

## CSS054B Series

Part Number	Mark	Inductance	Test Freq.	D.C.R. (at 20°C) Max. (ohm)	Rated Current (A)*
CSS054B-100M	AM	10uH+/-20%	2.52MHz	0.08	1.60
CSS054B-120M	BM	12uH+/-20%	2.52MHz	0.09	1.50
CSS054B-150M	CM	15uH+/-20%	2.52MHz	0.11	1.40
CSS054B-180M	DM	18uH+/-20%	2.52MHz	0.12	1.30
CSS054B-220M	EM	22uH+/-20%	2.52MHz	0.14	1.10
CSS054B-270M	FM	27uH+/-20%	2.52MHz	0.16	1.00
CSS054B-330L	GL	33uH+/-15%	2.52MHz	0.18	0.92
CSS054B-390L	HL	39uH+/-15%	2.52MHz	0.26	0.84
CSS054B-470L	JL	47uH+/-15%	2.52MHz	0.30	0.76

Part Number	Mark	Inductance	Test Freq.	D.C.R. (at 20°C) Max. (ohm)	Rated Current (A)*
CSS054B-560L	KL	56uH+/-15%	2.52MHz	0.34	0.68
CSS054B-680L	LL	68uH+/-15%	2.52MHz	0.37	0.63
CSS054B-820L	ML	82uH+/-15%	2.52MHz	0.48	0.58
CSS054B-101L	NL	100uH+/-15%	1KHz	0.56	0.50
CSS054B-121L	PL	120uH+/-15%	1KHz	0.74	0.46
CSS054B-151L	QL	150uH+/-15%	1KHz	0.88	0.40
CSS054B-181L	RL	180uH+/-15%	1KHz	1.10	0.38
CSS054B-221L	SL	220uH+/-15%	1KHz	1.26	0.36

## CSS075B Series

Part Number	Mark	Inductance	Test Freq.	D.C.R. (at 200°C) Max. (ohm)	Rated Current (A)*
CSS075B-100M	100M	10uH+/-20%	2.52MHz	0.05	2.40
CSS075B-120M	120M	12uH+/-20%	2.52MHz	0.06	2.30
CSS075B-150M	150M	15uH+/-20%	2.52MHz	0.07	2.10
CSS075B-180M	180M	18uH+/-20%	2.52MHz	0.08	1.90
CSS075B-220M	220M	22uH+/-20%	2.52MHz	0.09	1.70
CSS075B-270M	270M	27uH+/-20%	2.52MHz	0.10	1.60
CSS075B-330L	330L	33uH+/-15%	2.52MHz	0.11	1.40
CSS075B-390L	390L	39uH+/-15%	2.52MHz	0.13	1.30
CSS075B-470L	470L	47uH+/-15%	2.52MHz	0.15	1.20
CSS075B-560L	560L	56uH+/-15%	2.52MHz	0.19	1.10
CSS075B-680L	680L	68uH+/-15%	2.52MHz	0.22	0.97

Part Number	Mark	Inductance	Test Freq.	D.C.R. (at 200°C) Max. (ohm)	Rated Current (A)*
CSS075B-820L	820L	82uH+/-15%	2.52MHz	0.30	0.88
CSS075B-101L	101L	100uH+/-15%	1KHz	0.34	0.80
CSS075B-121L	121L	120uH+/-15%	1KHz	0.38	0.73
CSS075B-151L	151L	150uH+/-15%	1KHz	0.51	0.65
CSS075B-181L	181L	180uH+/-15%	1KHz	0.57	0.60
CSS075B-221L	221L	220uH+/-15%	1KHz	0.77	0.54
CSS075B-271L	271L	270uH+/-15%	1KHz	0.89	0.49
CSS075B-331L	331L	331uH+/-15%	1KHz	1.01	0.44
CSS075B-391L	391L	390uH+/-15%	1KHz	1.42	0.41
CSS075B-471L	471L	470uH+/-15%	1KHz	1.57	0.37

## CSS105B Series

Part Number	Mark	Inductance	Test Freq.	D.C.R. (at 200°C) Max. (ohm)	Rated Current (A)*
CSS105B-100M	100M	10uH+/-20%	2.52MHz	0.05	2.50
CSS105B-120M	120M	12uH+/-20%	2.52MHz	0.06	2.40
CSS105B-150M	150M	15uH+/-20%	2.52MHz	0.07	2.30
CSS105B-180M	180M	18uH+/-20%	2.52MHz	0.08	2.20
CSS105B-220M	220M	22uH+/-20%	2.52MHz	0.091	2.10
CSS105B-270M	270M	27uH+/-20%	2.52MHz	0.10	2.00

Part Number	Mark	Inductance	Test Freq.	D.C.R. (at 200°C) Max. (ohm)	Rated Current (A)*
CSS105B-330L	330L	33uH+/-15%	2.52MHz	0.11	1.90
CSS105B-390L	390L	39uH+/-15%	2.52MHz	0.12	1.80
CSS105B-470L	470L	47uH+/-15%	2.52MHz	0.14	1.60
CSS105B-560L	560L	56uH+/-15%	2.52MHz	0.15	1.40
CSS105B-680L	680L	68uH+/-15%	2.52MHz	0.18	1.30
CSS105B-820L	820L	82uH+/-15%	2.52MHz	0.20	1.20

Tolerance: M±20% . L±15% . K10%

Inductance drops no more than 10% at rated current applied or temperature rise ▲ T = 40° C

# SMD Shielded Power Chokes

## CSS105B Series (CONTD)

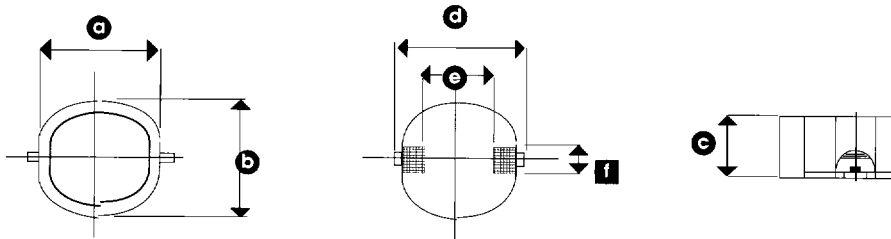
Part Number	Mark	Inductance	Test Freq.	D.C.R. (at 200° C) Max. (ohm)	Rated Current (A)*
CSS105B-101L	101L	100uH+/-15%	1KHz	0.28	1.10
CSS105B-121L	121L	120uH+/-15%	1KHz	0.32	0.97
CSS105B-151L	151L	150uH+/-15%	1KHz	0.38	0.86
CSS105B-181L	181L	180uH+/-15%	1KHz	0.50	0.84
CSS105B-221L	221L	220uH+/-15%	1KHz	0.58	0.72
CSS105B-271L	271L	270uH+/-15%	1KHz	0.78	0.65

Part Number	Mark	Inductance	Test Freq.	D.C.R. (at 200° C) Max. (ohm)	Rated Current (A)*
CSS105B-331L	331L	331uH+/-15%	1KHz	0.92	0.61
CSS105B-391L	391L	390uH+/-15%	1KHz	1.04	0.58
CSS105B-471L	471L	470uH+/-15%	1KHz	1.18	0.50
CSS105B-561L	561L	560uH+/-15%	1KHz	1.52	0.48
CSS105B-681L	681L	680uH+/-15%	1KHz	1.80	0.43
CSS105B-821L	821L	820uH+/-15%	1KHz	2.04	0.38

Tolerance: M±20% . L±15% . K10%

Inductance drops no more than 10% at rated current applied or temperature rise  $\Delta T = 40^{\circ} C$

## Package Dimensions



PRODUCT SERIES	a	b	c	d	e	f
CSS054B	7.0+/-0.3	7.8+/-0.3	5.5 (±0.2)	10.5 MAX	3.7+/-0.3	3+/-0.2
CSS075B	9.0+/-0.35	10.0+/-0.35	5.5 (±0.2)	12.5 MAX	5.6+/-0.3	3+/-0.2
CSS105B	11.6+/-0.4	12.6+/-0.4	5.5 (±0.2)	15.0 MAX	8.2+/-0.3	3+/-0.2