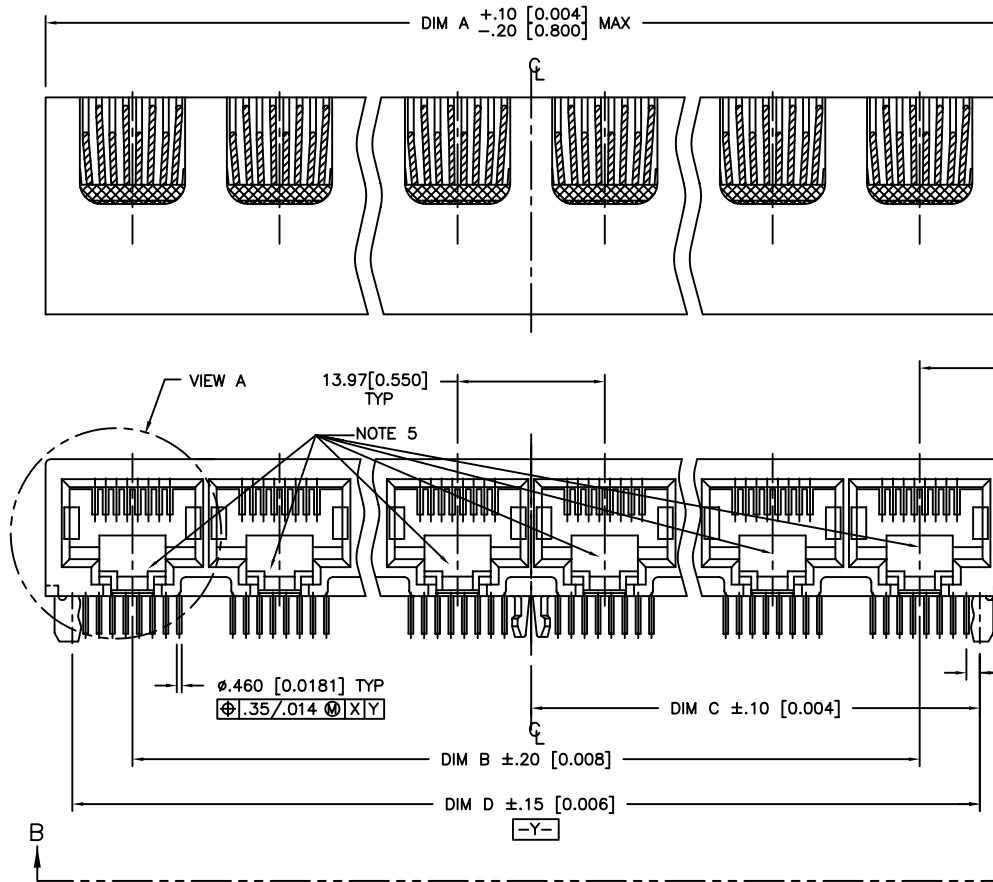


Tous droits strictement reserves. Reproduction ou communication a des tiers interdite sous quelque forme que ce soit sans autorisation ecrite du proprietaire. Propriete de c FCI. Droits de reproduction FCI.

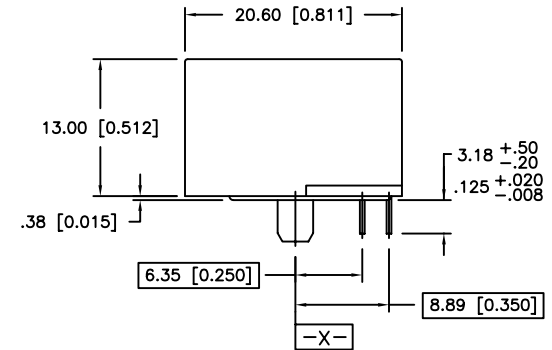
FCI

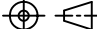

All rights strictly reserved. Reproduction or issue to third parties in any form whatever is not permitted without written authority from the proprietor. Property of FCI. Copyright FCI.

PRODUCT NO.
SEE TABLE



8.26 [0.325] -X02LF THRU -X12LF
7.62 [0.300] -X01LF



mat'l. code				tolerances unless otherwise specified				CUSTOMER COPY		A FCI www.fciconnect.com	
ltr	ecn no	dr	date	linear	.XX ±.01/.X±.3		projection		title		
C	V51452	LSS	12/4/95		.XXX ±.005/.XX±.13				R/A 8 POS GANG JACK ASSY		
D	V60945	MDF	8/27/96	angles	.XXXX ±.0020/.XXX±.051		MM/INCH		UNSHIELDED DIAMOND PEG		
E	V61463	GAH	1/10/97		0° ±2°				product family MOD JACK		
F	T80171	CATHY	6/10/98	dr	KCHOU	3/18/93	scale	A	code		
G	V12594	LP	3/20/02	enrg	TC	3/18/93			213		
H	V03-1103	PJ	10/21/03	chr	J.TSAO	3/18/93	1:1	94711	sheet		
J	N04-0119	MHT	12/9/04	appd	J.TSAO	3/18/93			1 of 5		
sheet index	revision	J	J	J	J	J					
	sheet	1	2	3	4	5					

cage code
22526

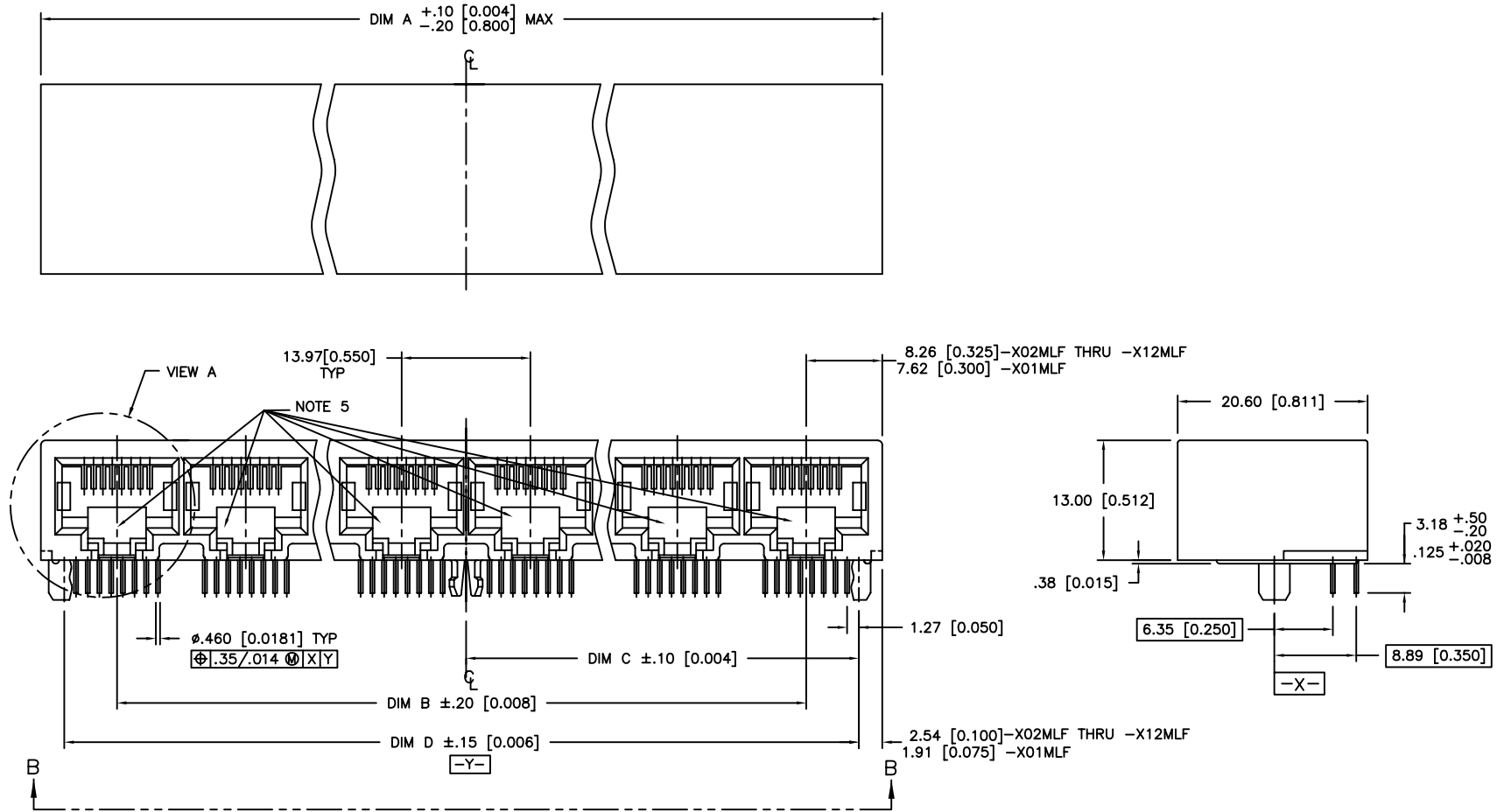
ACAD

PDM: Rev:J

STATUS:Released

Printed: Feb 20, 2010

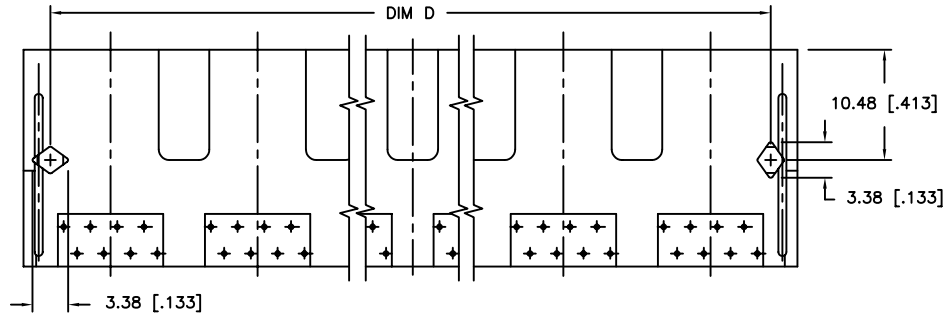
PRODUCT NO.
SEE TABLE



mat'l. code				tolerances unless otherwise specified		CUSTOMER COPY	A FCI www.fciconnect.com		
ltr	ecn no	dr	date	linear	angles		projection	title	product family
J								R/A 8 POS GANG JACK ASSY	MOD JACK
								UNSHIELDED DIAMOND PEG	code
									213
									sheet
									2 of
sheet index	revision sheet								

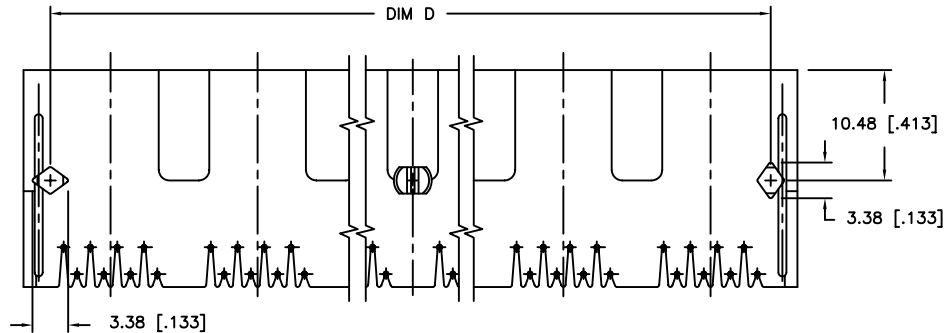
cage code
22526

PRODUCT NO.
SEE TABLE




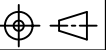
VIEW B-B

—XXXLF PRODUCT ONLY (WITHOUT CENTER PEG — SEE NOTE 4)



VIEW B-B

—XXXMLF PRODUCT ONLY (WITH CENTER PEG — SEE NOTE 3)

mat'l. code				tolerances unless otherwise specified		CUSTOMER COPY	 www.fciconnect.com		
ltr	ecn no	dr	date	linear	angles				
J				.XX ±.01/.X±.3	0° ±2°	projection			
				.XXX ±.005/.XX±.13		MM/INCH			
				.XXXX ±.0020/.XXX±.051		scale	title R/A 8 POS GANG JACK ASSY UNSHIELDED DIAMOND PEG product family MOD JACK size dwg no A 94711 code 213 sheet 3 of		
				dr KCHOU 3/18/93		1:1			
				enr TC 3/18/93			cage code 22526		
				chr J.TSAO 3/18/93					
				appd J.TSAO 3/18/93			Printed: Feb 20, 2010		
sheet index	revision sheet								

1 | 2

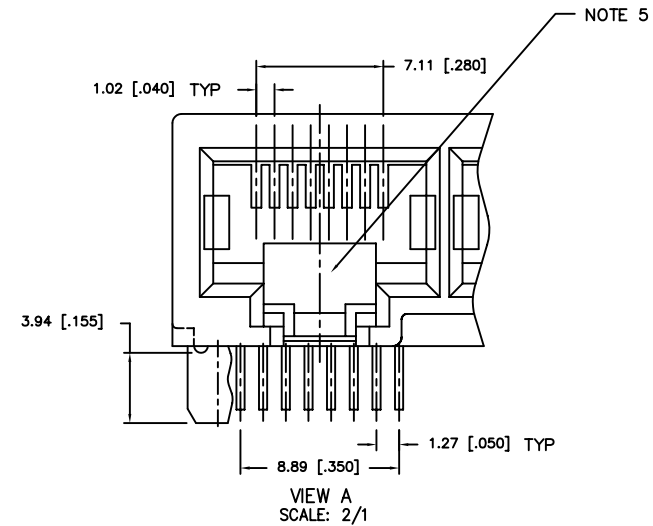
3

4

PRODUCT No.	NO OF PORTS	DIM A $\begin{smallmatrix} +.10 \\ -.20 \end{smallmatrix}$ $\begin{smallmatrix} [0.004] \\ [0.008] \end{smallmatrix}$	DIM B	DIM C $\pm .10$ [0.004]	DIM D $\pm .15$ [0.006]
94711-X01MLF	1	15.24 [0.600]	-----	5.72 [0.225]	11.43 [0.450]
94711-X02MLF	2	30.48 [1.200]	13.97 [0.550]	12.70 [0.500]	25.40 [1.000]
94711-X03MLF	3	44.45 [1.750]	27.94 [1.100]	19.69 [0.775]	39.37 [1.550]
94711-X04MLF	4	58.42 [2.300]	41.91 [1.650]	26.67 [1.050]	53.34 [2.100]
94711-X05MLF	5	72.39 [2.850]	55.88 [2.200]	33.66 [1.325]	67.31 [2.650]
94711-X06MLF	6	86.36 [3.400]	69.85 [2.750]	40.64 [1.600]	81.28 [3.200]
94711-X07MLF	7	100.33 [3.950]	83.82 [3.300]	47.63 [1.875]	95.25 [3.750]
94711-X08MLF	8	114.30 [4.500]	97.79 [3.850]	54.61 [2.150]	109.22 [4.300]
94711-X09MLF	9	128.27 [5.050]	111.76 [4.400]	61.60 [2.425]	123.19 [4.850]
94711-X10MLF	10	142.24 [5.600]	125.73 [4.950]	68.58 [2.700]	137.16 [5.400]
94711-X11MLF	11	156.21 [6.150]	139.70 [5.500]	75.57 [2.975]	151.13 [5.950]
94711-X12MLF	12	170.18 [6.700]	153.67 [6.050]	82.55 [3.250]	165.10 [6.500]

PRODUCT No.	NO OF PORTS	DIM A $\begin{smallmatrix} +.10 \\ -.20 \end{smallmatrix}$ $\begin{smallmatrix} [0.004] \\ [0.008] \end{smallmatrix}$	DIM B	DIM C $\pm .10$ [0.004]	DIM D $\pm .15$ [0.006]
94711-X01LF	1	15.24 [0.600]	-----	5.72 [0.225]	11.43 [0.450]
94711-X02LF	2	30.48 [1.200]	13.97 [0.550]	12.70 [0.500]	25.40 [1.000]
94711-X03LF	3	44.45 [1.750]	27.94 [1.100]	19.69 [0.775]	39.37 [1.550]
94711-X04LF	4	58.42 [2.300]	41.91 [1.650]	26.67 [1.050]	53.34 [2.100]
94711-X05LF	5	72.39 [2.850]	55.88 [2.200]	33.66 [1.325]	67.31 [2.650]
94711-X06LF	6	86.36 [3.400]	69.85 [2.750]	40.64 [1.600]	81.28 [3.200]
94711-X07LF	7	100.33 [3.950]	83.82 [3.300]	47.63 [1.875]	95.25 [3.750]
94711-X08LF	8	114.30 [4.500]	97.79 [3.850]	54.61 [2.150]	109.22 [4.300]
94711-X09LF	9	128.27 [5.050]	111.76 [4.400]	61.60 [2.425]	123.19 [4.850]
94711-X10LF	10	142.24 [5.600]	125.73 [4.950]	68.58 [2.700]	137.16 [5.400]
94711-X11LF	11	156.21 [6.150]	139.70 [5.500]	75.57 [2.975]	151.13 [5.950]
94711-X12LF	12	170.18 [6.700]	153.67 [6.050]	82.55 [3.250]	165.10 [6.500]




NOTE: PLEASE CHECK FOR AVAILABILITY,
NOT ALL OPTIONS AVAILABLE.



PLATING CODE X	PLATING
0	.76uM/30u" G.X.T.
1	.38uM/15u" GOLD
3	.76uM/30u" GOLD
5	1.27uM/50u" GOLD

NOTES:

1. APPLICABLE PC BOARD THICKNESS: 1.60 [0.062].
2. CONTACTS: PHOSPHOR BRONZE ALLOY UNS-C51000, \emptyset .460 [0.0181] ROUND WIRE, SEE TABLE FOR PLATING.
- ③ CENTER PEG FOR 8 PORTS AND ABOVE, (-XXXMLF PRODUCT ONLY).
- ④ NO CENTER PEG FOR -XXXLF PRODUCT.
5. COMPANY LOGO LOCATED IN THIS AREA.
6. PART NUMBERS WITH LF IN THE END ARE LEAD FREE
7. THIS PRODUCT MEETS EUROPEAN UNION DIRECTIVES AND OTHER COUNTRY REGULATION AS DESCRIBED IN GS-22-008.
8. THE HOUSING WITHSTAND EXPOSURE TO 260° PEAK TEMPERATURE FOR 15 SECONDS IN CONVENTION INFRA-RED OR VAPOR PHASE REFLOW OVEN.

mat'l. code				tolerances unless otherwise specified				CUSTOMER COPY		<div> www.fciconnect.com</div>				
ltr	ecn no	dr	date	linear	.XX ±.01 / .X±.3			projection 	title					
J					.XXX ±.005 / .XX±.13				R/A 8 POS GANG JACK ASSY					
					.XXXX ±.0020 / .XXX±.051				UNSHIELDED DIAMOND PEG					
				angles	0° ±2°			 MM/INCH	product family		MOD JACK		code	
				dr	KCHOU	3/18/93			size		dwg no		213	
				engr	TC	3/18/93			scale		A		sheet	
				chr	J.TSAO	3/18/93		1:1		94711		4 of		
				appd	J.TSAO	3/18/93								
sheet index		revision sheet												

1 | 2

3

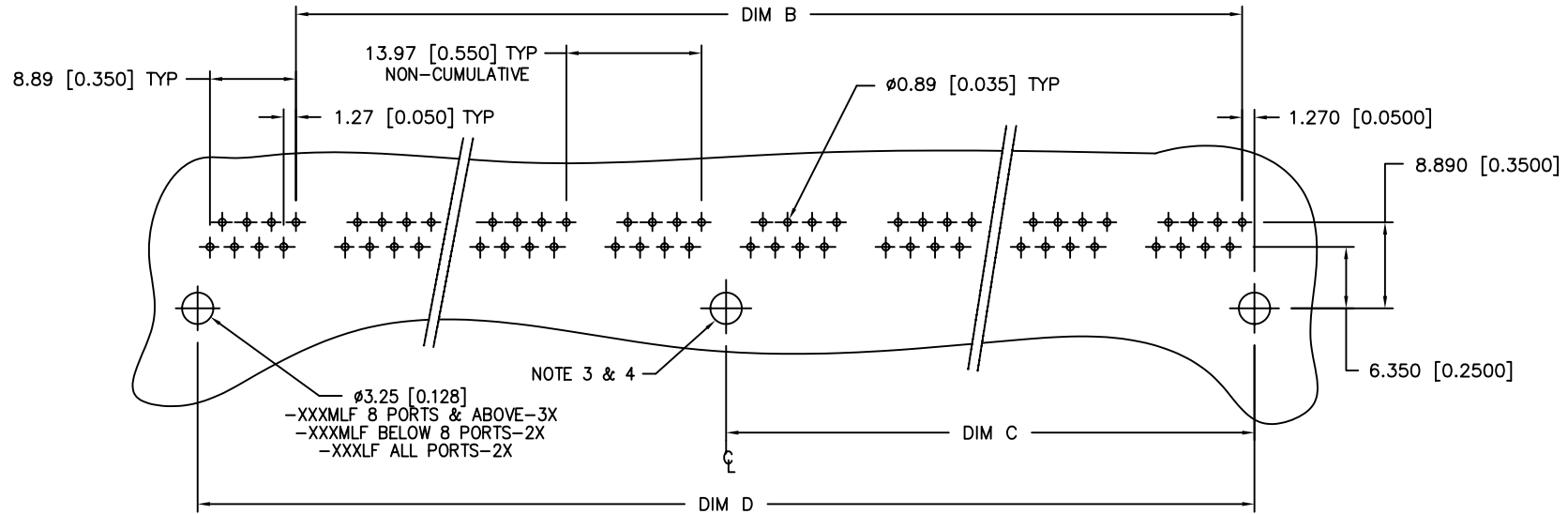
4

Tous droits strictement réservés. Reproduction ou communication à des tiers interdite sous quelque forme que ce soit sans autorisation écrite du propriétaire. Propriété de c FCI. Droits de reproduction FCI.

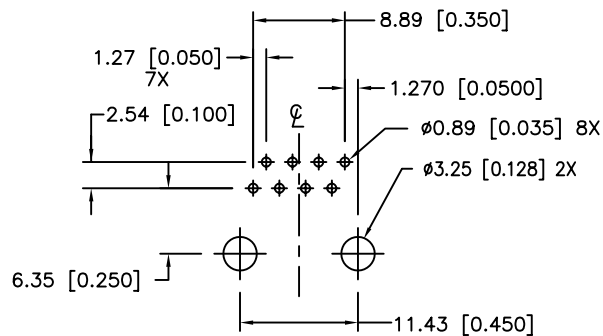
FCI

All rights strictly reserved. Reproduction or issue to third parties in any form whatever is not permitted without written authority from the proprietor. Property of FCI. Copyright FCI.

PRODUCT NO.
SEE TABLE



RECOMMENDED PC BOARD LAYOUT
(2 THRU 12 PORTS)



RECOMMENDED PC BOARD LAYOUT
(1 PORT)

mat'l. code				tolerances unless otherwise specified		CUSTOMER COPY	A FCI www.fciconnect.com		
ltr	ecn no	dr	date						
J				linear	.XX ±.01/.X±.3	projection	title		
					.XXX ±.005/.XX±.13		R/A 8 POS GANG JACK ASSY		
				angles	.XXXX ±.0020/.XXX±.051		UNSHIELDED DIAMOND PEG		
				dr	KCHOU 3/18/93	MM/INCH	product family MOD JACK		code
				enrg	TC 3/18/93	scale	size dwg no		213
				chr	J.TSAO 3/18/93		A 94711		sheet
				appd	J.TSAO 3/18/93	1:1			5 of
sheet index	revision sheet								

cage code
22526

ACAD

PDM: Rev:J

STATUS: Released

Printed: Feb 20, 2010