

2964 Series SP6T Switches

Absorptive Switch Modules

Product Data Sheet

The most important thing we build is trust

Features:

- Broadband Frequency Ranges
- Hermetic Package
- Stripline Compatible
- Compact Size

Description:

Cobham's switch modules cover multi-octave bandwidths from UHF to Ku-band. Cobham's expertise in design techniques results in devices having unique advantages that allow them to satisfy a variety of microwave system requirements.

Specifications 25°C:

Frequency Range (GHz)	Insertion Loss (dB)	VSWR	Isolation (dB)	Switching Speed (nS)	Power Handling	Part Number
0.5-2.0	2.1	1.7:1	50	1000	0.5	2964-1001
2-8	2.8	1.9:1	50	1000	0.5	2964-1002
6-18	3.8	2.0:1	45	1000	0.5	2964-1003
2-18	4.0	2.2:1	45	1000	0.5	2964-1004

Notes:

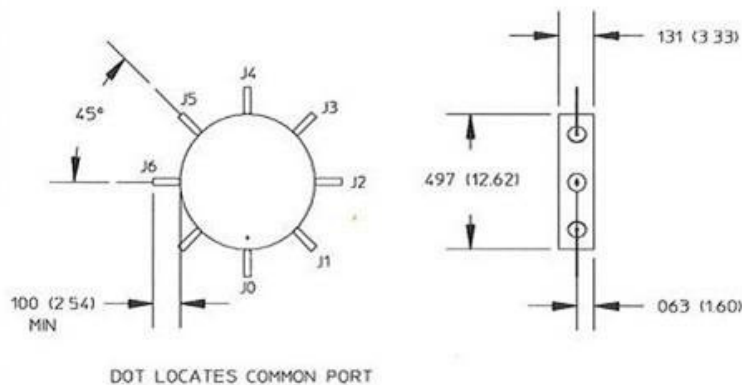
1. Bias: -30mA for specified loss
+30mA/Arm for specified loss
2. Switching speed is measured from 10%-90% and 90%-10% of the detected RF with a 2 MHz maximum switching rate.
3. Switching speed is measured with a standard M/A-COM driver.
4. Operating power is 100 mW maximum.

Maximum Ratings:

Parameter	Absolute Maximum
Storage Temperature	-65°C to +125°C
Operating Temperature	-55°C to +95°C

Mechanical Outline

Without Internal Bias Circuitry



DOT LOCATES COMMON PORT

±.002
Leads are .012 (.31) diameter (std.),
±.010 ±.002
May be supplied as tabs: .025 (.64) Wide, .006 (.15) Thick (opt.).

For further information please contact:

Cobham Sensor Systems
1001 Pawtucket Blvd.
Lowell, MA 01854 USA
Tel: 877-COBHAM7 (877-262-4267)
Email: Sales.Space&Components@Cobham.com