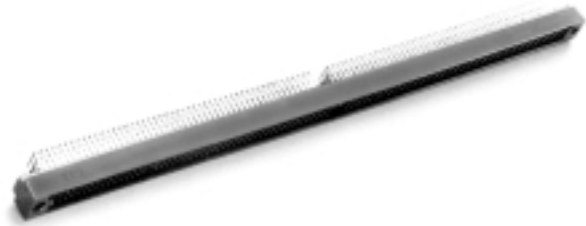


### THREE ROW, TWO CELL RIGHT ANGLE MALE XD/P™ CONNECTORS 240-366 POSITIONS ONE CENTER MOUNTING FEATURE



#### PHYSICAL PROPERTIES

Insulation Material: Glass filled thermoplastic rated UL 94V-0  
 Color: Black  
 Contacts: Copper alloy, nickel plate overall, 30 microinches gold plating in contact zone, tin/lead or gold on posts

#### ELECTRICAL PROPERTIES

Current Rating: 2 amps/pin  
 Insulation Resistance: >1 x 10<sup>9</sup> Ohms  
 Dielectric Strength: >1000 VDC at sea level

#### ENVIRONMENTAL PROPERTIES

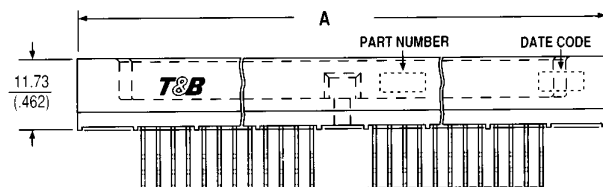
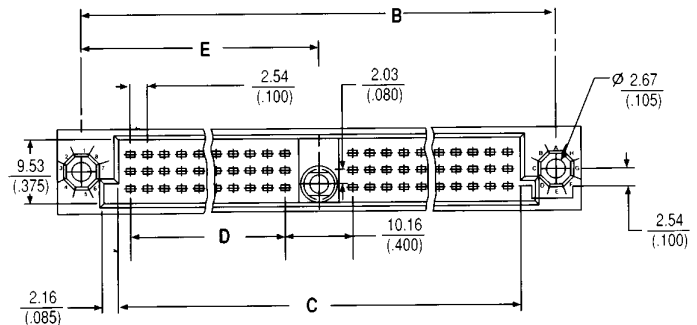
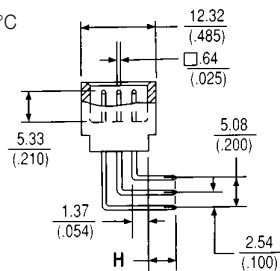
Temperature Rating: -55°C TO 125°C

#### MOUNTING HARDWARE

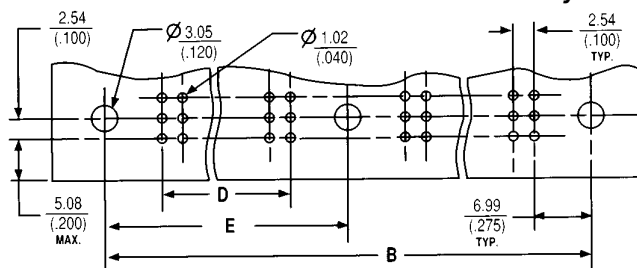
See pages 310-314

#### SELECTIVE LOADING

See pages 308-309



#### Recommended Printed Circuit Board Layout



#### Ordering Information

NUMBER OF POSITIONS	PART NUMBER SPECIFY X	A	B	C	D	E	X	H TAIL LENGTH	RECOMMENDED PCB THICKNESS RANGE
240	302403X000-21	229.87 (9.050)	222.25 (8.750)	212.09 (8.350)	99.06 (3.900)	111.13 (4.375)	J	3.05 (.120)	1.2 - 2.0 (.047 - .077)
252	302523X000-21	240.03 (9.450)	232.41 (9.150)	222.51 (8.750)	104.14 (4.100)	116.21 (4.575)	K	3.81 (.150)	2.0 - 2.8 (.078 - .109)
258	302583X000-21	245.11 (9.650)	237.49 (9.350)	227.33 (8.950)	106.68 (4.200)	118.75 (4.675)	L	4.57 (.180)	2.8 - 3.6 (.110 - .140)
276	302763X000-21	260.35 (10.250)	252.73 (9.950)	242.54 (9.550)	114.30 (4.500)	126.37 (4.975)			
294	302943X000-21	275.59 (10.850)	267.97 (10.550)	257.81 (10.150)	121.92 (4.800)	133.99 (5.275)			
300	303003X000-21	280.67 (11.050)	273.05 (10.750)	262.89 (10.350)	124.46 (4.900)	136.53 (5.375)			
312	303123X000-21	290.83 (11.450)	283.21 (11.150)	273.05 (10.750)	129.54 (5.100)	141.61 (5.575)			
330	303303X000-21	306.07 (12.050)	298.45 (11.750)	288.29 (11.350)	137.16 (5.400)	149.23 (5.875)			
348	303483X000-21	321.31 (12.650)	313.69 (12.350)	303.53 (11.950)	144.78 (5.700)	156.85 (6.175)			
366	303663X000-21	336.55 (13.250)	328.93 (12.950)	318.77 (12.550)	152.40 (6.000)	164.67 (6.475)			

eg. 303663L000-21