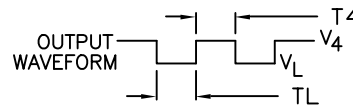
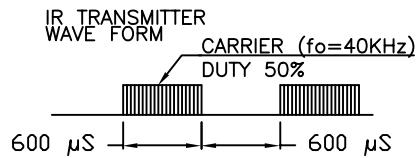
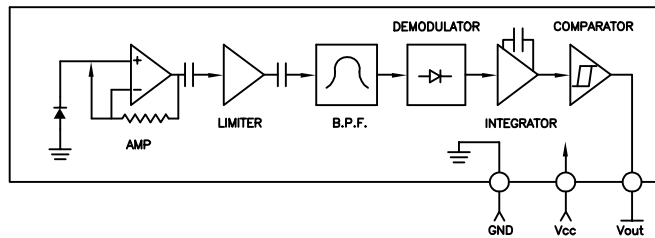
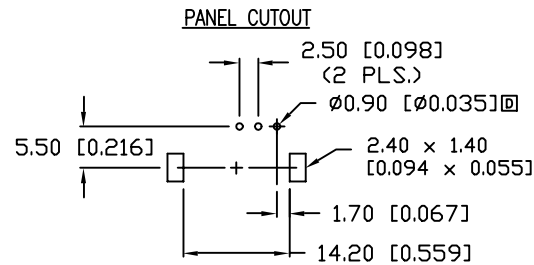
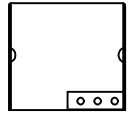
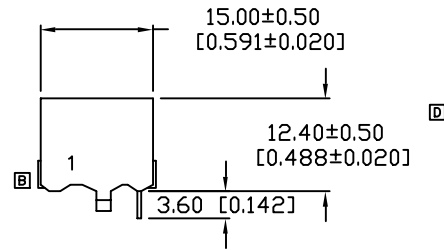
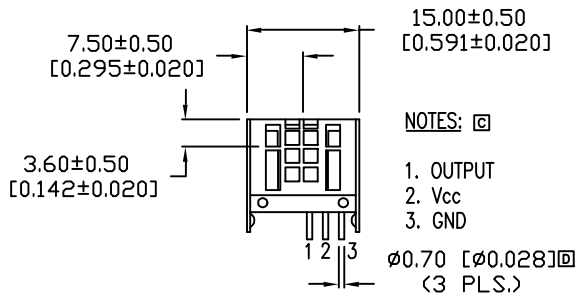


UNCONTROLLED DOCUMENT

PART NUMBER
OED-RM200-4F

REV.



*UNLESS OTHERWISE SPECIFIED TOLERANCES PER DECIMAL PRECISION ARE: X=±1 (±0.039), X.X=±0.5 (±0.020), X.XX=±0.25 (±0.010), X.XXX=±0.127 (±0.005). LEAD SIZE=±0.05 (±0.002), LEAD LENGTH=±0.75 (±0.030). MIN= +DECIMAL PRECISION -0.00, MAX= +0.00 -DECIMAL PRECISION

ELECTRO-OPTICAL CHARACTERISTICS TA=25°C

| PARAMETER | SYMBOL | MIN | TYP | MAX | UNITS |
|---------------------------|--------|-----|-------|------|-------|
| SUPPLY VOLTAGE | Vcc | | 5 | | V |
| SUPPLY CURRENT | Icc | - | - | 3 | mA |
| DETECTING DISTANCE | L | 10 | - | - | m |
| HALF ANGLE | θ | - | ±45 | - | DEG |
| B.P.F. CENTER FREQUENCY | fo | - | 32.75 | - | KHz |
| PEAK WAVELENGTH | p | - | 940 | - | nm |
| HIGH LEVEL OUTPUT VOLT. | Voh | Vcc | - | - | V |
| LOW LEVEL OUTPUT VOLT. | Vol | - | - | 0.45 | V |
| HIGH/LOW LVL. PULSE WIDTH | TH/TL | 440 | - | 770 | μS |

LIMITS OF SAFE OPERATION AT 25°C

| PARAMETER | UNITS | RATING | UNITS |
|-----------------|-------|-------------|------------|
| SUPPLY VOLTAGE | Vcc | 6.3 | V |
| SUPPLY CURRENT | Icc | 3 | mA |
| OUTPUT VOLTAGE | Vout | 6.3 | V |
| OPERATING TEMP. | Topr | -10 TO + 60 | °C |
| STORAGE TEMP. | Tstr | -20 TO + 75 | °C |
| SOLDERING TEMP. | Tsol | +260 | °C |
| 2.0mm FROM BODY | | | 3 SEC. MAX |

UNCONTROLLED DOCUMENT

| | |
|------|-----------------------------|
| REV. | PART NUMBER OED-RM200-4F |
|------|-----------------------------|

CONFIDENTIAL INFORMATION
THE INFORMATION CONTAINED IN THIS DOCUMENT IS THE PROPERTY OF LUMEX INC. EXCEPT AS SPECIFICALLY AUTHORIZED IN WRITING BY LUMEX INC., THE HOLDER OF THIS DOCUMENT SHALL KEEP ALL INFORMATION CONTAINED HEREIN CONFIDENTIAL AND SHALL PROTECT SAME IN WHOLE OR IN PART FROM DISCLOSURE AND DISSEMINATION TO ALL THIRD PARTIES.



290 E. HELLEN ROAD
PALATINE, ILLINOIS 60067
PHONE: (847) 359-2790
WEB: http://www.lumex.com

REMOTE CONTROL RECEIVER MODULE,
WITH POWER SUPPLY NOISE FILTER.

RELIABILITY NOTE
OUR MANY YEARS OF EXPERIENCE DATA ACCUMULATION INDICATE THAT SOLDER HEAT IS A MAJOR CAUSE OF EARLY AND FUTURE FAILURE. PLEASE PAY ATTENTION TO YOUR SOLDERING PROCESS.

| | | | |
|--------------------|-------------|--------------|---------------|
| DRAWN BY: TM/BC | CHECKED BY: | APPROVED BY: | DATE: 10-9-95 |
| | | | PAGE: 1 OF 1 |
| | | | SCALE: N/A |