

### Flange Mounted - Integrated Design

- DC - 18 GHz Performance
- Tab, Slot, or Rod Contact for Microstrip use
- Interchangeable Transition Contact Pins
- Reduces Package Size and Weight

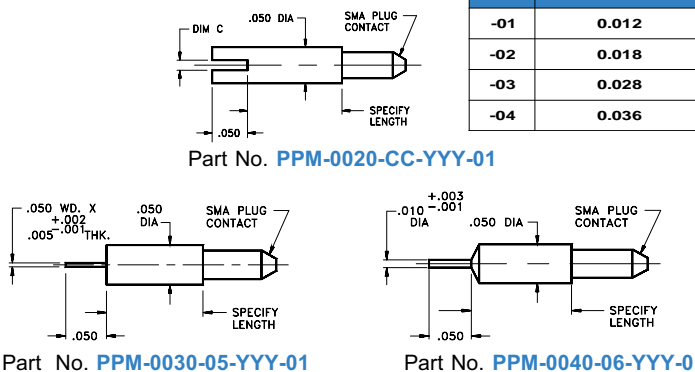
This series of SMA flange mounted Connector-Attenuators are ideally suited for use on microstrip packages where size and weight are a consideration. By combining the Attenuator and the launching Connector, space and weight as well as cost savings is accomplished. The resistive film circuit is designed to improve reliability and lower mismatch losses by eliminating the need for separate coaxial components. The units exhibit low VSWR and are ruggedly constructed of stainless steel and are temperature stabilized for use in hostile environments.

Model No.	Attenuation	VSWR	Fig.
ATT-0300--XX-SMA-02	01 - 06 $\pm 0.30$	1.20 @ DC - 4 GHz	1
	07 - 10 $\pm 0.50$	1.35 @ 4 - 12.4 GHz	
	11 - 20 $\pm 0.75$	1.50 @ 12.4 - 18 GHz	
ATT-0310--XX-SMA-02	01 - 06 $\pm 0.30$ *	1.15 @ DC - 4 GHz	2
	07 - 10 $\pm 0.50$	1.25 @ 4-12.4 GHz	
	11 - 20 $\pm 0.75$	1.50 @ 12.4 - 18 GHz	
ATT-0311--XX-SMA-02	01 - 06 $\pm 0.30$ *	1.15 @ DC - 4 GHz	3
	07 - 10 $\pm 0.50$	1.25 @ 4-12.4 GHz	
	11 - 20 $\pm 0.75$	1.50 @ 12.4 - 18 GHz	
ATT-0312--XX-SMA-02	01 - 06 $\pm 0.30$ *	1.15 @ DC - 4 GHz	4
	07 - 10 $\pm 0.50$	1.25 @ 4-12.4 GHz	
	11 - 20 $\pm 0.75$	1.50 @ 12.4 - 18 GHz	
ATT-0314--XX-SMA-02	01 - 06 $\pm 0.30$ *	1.15 @ DC - 4 GHz	5
	07 - 10 $\pm 0.50$	1.25 @ 4-12.4 GHz	
	11 - 20 $\pm 0.75$	1.50 @ 12.4 - 18 GHz	

Note: When ordering, replace "XX" in Model No. with desired Attenuation Value. Interchangeable center pin must be ordered separately, see Part No's below.

\* From 12.4 to 18 GHz, Attenuation accuracy is  $\pm 0.40$  dB

### Interchangeable Pin Configurations



### Notes:

1. Select desired length of interchangeable center pins in accordance with package requirements and substitute the three digit decimal length for "YYY" in the Part No.
2. All Attenuator Models are rated at 2 Watts Average and 200 Watts Peak.
3. Finish : Housings are Passivated Stainless Steel, Center Pins are gold plated.

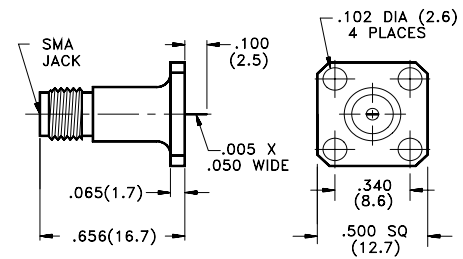


Figure 1 - non- removable tab contact

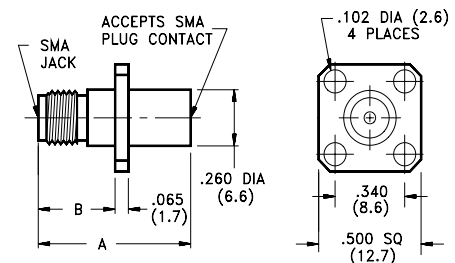


Figure 2

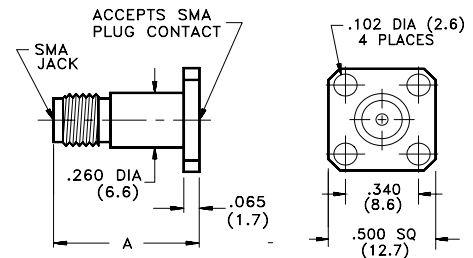


Figure 3

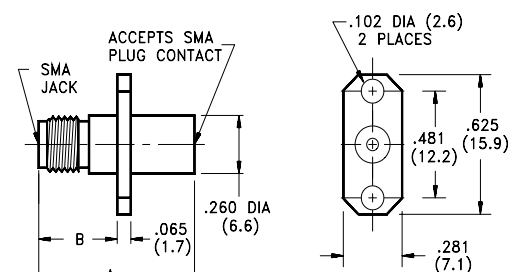


Figure 4

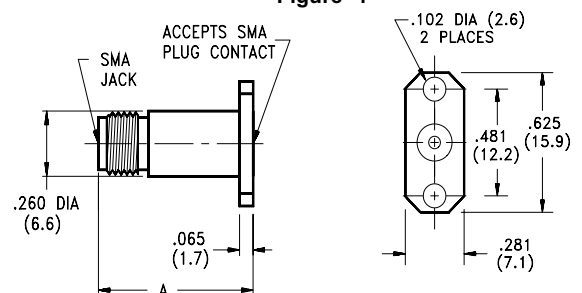


Figure 5

dB	DIM A	DIM B
1-12	.615 (15.6)	.375 (9.5)
13-30	.765 (19.4)	.525 (13.3)