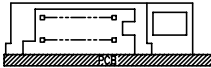
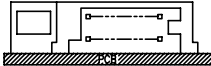
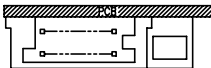


	PRODUCT NO. *92193-XXXXX	STAND OFF(mm)	DIM "N" (mm)	PUSH ROD COLOR	HDR SOLDER TAIL	HOLD DOWN	MECH ASSY 92192-XXXXX	HDR ASSY 92140-XXXX	DIM "P" (mm)	HDR COLOR	SHEET NO.	MOUNT STYLE TO PCB & DIRECTION OF PUSH ROD
△	000AA	0	8	BLACK	R/A	NONE	00AA	000	2.8	BLACK	NO.2	 TOP MOUNT TO PCB & RIGHT PUSH ROD
	000CA	0	13	BLACK	R/A	NONE	00CA	000	2.8			
	000CAH	0	13	BLACK	R/A	YES	00CAH	000H	2.8			
	000CB	0	13	BLUE	R/A	NONE	00CB	000	2.8			
	000CBH	0	13	BLUE	R/A	YES	00CBH	000H	2.8			
	000FA	0	21	BLACK	R/A	YES	00FA	000	2.8			
	001AA	0	8	BLACK	SMT STAGGERED	NONE	00AA	001	—#			
	001AAH	0	8	BLACK	SMT STAGGERED	YES	00AAH	001H	—#			
	001CA	0	13	BLACK	SMT STAGGERED	NONE	00CA	001	—#			
	001CAH	0	13	BLACK	SMT STAGGERED	YES	00CAH	001H	—#			
△	001FA	0	21	BLACK	SMT STAGGERED	NONE	00FA	001	—#	BLACK	NO.3	
	001FAH	0	21	BLACK	SMT STAGGERED	YES	00FAH	001H	—#			
	002CA	0	13	BLACK	SMT IN LINE	NONE	00CA	002	—#			
	002CAH	0	13	BLACK	SMT IN LINE	YES	00CAH	002H	—#			
	020CA	2	13	BLACK	R/A	NONE	02CA	040	2.5			
	040CA	4	13	BLACK	R/A	NONE	04CA	010	2.8			
	050CA	5	13	BLACK	R/A	NONE	05CA	020	2.8			
	050CAH	5	13	BLACK	R/A	YES	05CAH	020H	2.8			
	100CA	0	13	BLACK	R/A	NONE	10CA	000	2.8			
	100CAH	0	13	BLACK	R/A	YES	10CAH	000H	2.8			
△	101CA	0	13	BLACK	SMT STAGGERED	NONE	10CA	001	—#	BLACK	NO.4	 TOP MOUNT TO PCB & LEFT PUSH ROD
	101CAH	0	13	BLACK	SMT STAGGERED	YES	10CAH	001H	—#			
	101FA	0	21	BLACK	SMT STAGGERED	NONE	10FA	001	—#			
	101FAH	0	21	BLACK	SMT STAGGERED	YES	10FAH	001H	—#			
	102CA	0	13	BLACK	SMT IN LINE	NONE	10CA	002	—#			
	102CAH	0	13	BLACK	SMT IN LINE	YES	10CAH	002H	—#			
	120CA	2	13	BLACK	R/A	NONE	12CA	040	2.5			
	120FA	2	21	BLACK	R/A	NONE	12FA	040	2.5			
	130CA	3	13	BLACK	R/A	NONE	13CA	050	2.8			
	130CAH	3	13	BLACK	R/A	YES	13CAH	050H	2.8			
△	140CA	4	13	BLACK	R/A	NONE	14CA	010	2.8	BLACK	NO.5	
	150CA	5	13	BLACK	R/A	NONE	15CA	020	2.8			
	500CA	0	13	BLACK	R/A	NONE	10CA	500	2.8			
	500CAH	0	13	BLACK	R/A	YES	10CAH	500H	2.8			
	500FA	0	21	BLACK	R/A	NONE	10FA	500	2.8			
	501CA	0	13	BLACK	SMT STAGGERED	NONE	10CA	501	—#			
	501CAH	0	13	BLACK	SMT STAGGERED	YES	10CAH	501H	—#			
	502CA	0	13	BLACK	SMT IN LINE	NONE	10CA	502	—#			
	502CAH	0	13	BLACK	SMT IN LINE	YES	10CAH	502H	—#			
	502FA	0	21	BLACK	SMT IN LINE	NONE	10FA	502	—#			
△	520CA	2	13	BLACK	R/A	NONE	12CA	540	2.5	NATURAL	NO.6	 BOTTOM MOUNT TO PCB & RIGHT PUSH ROD
	540CA	4	13	BLACK	R/A	NONE	14CA	510	2.8			
	550CA	5	13	BLACK	R/A	NONE	15CA	520	2.8			
	600CA	0	13	BLACK	R/A	NONE	00CA	500	2.8			
	600CAH	0	13	BLACK	R/A	YES	00CAH	500H	2.8			
	601CA	0	13	BLACK	SMT STAGGERED	NONE	00CA	501	—#			
	601CAH	0	13	BLACK	SMT STAGGERED	YES	00CAH	501H	—#			
	602CA	0	13	BLACK	SMT IN LINE	NONE	00CA	502	—#			
	602CAH	0	13	BLACK	SMT IN LINE	YES	00CAH	502H	—#			
	620CA	2	13	BLACK	R/A	NONE	02CA	540	2.5			

92193-X		REVISED	
OPTIONAL LEAD FREE	NONE : N D		
	LF : YES (SEE NOTE 1)		
OPTIONAL HOLD DOWN	NONE : N D		
	H : YES		
PUSH ROD COLOR	A : BLACK		
	B : BLUE		
PUSH ROD LENGTH (DIM "N")	A : 8mm		
	C : 13mm		
	F : 21mm		
HDR SOLDER TAIL	0 : R/A		
	1 : SMT STAGGERED		
	2 : SMT IN LINE		
STAND OFF HEIGHT (DIM "M")	0 : 0mm(NONE)		
	2 : 2mm		
	3 : 3mm		
	4 : 4mm		
	5 : 5mm		
MOUNT STYLE TO PCB & DIRECTION OF PUSH ROD	0 : TOP MOUNT RIGHTPUSH ROD &		
	1 : TOP MOUNT LEFTPUSH ROD &		
	5 : BOTTOMMOUNT RIGHTPUSH ROD &		
	6 : BOTTOMMOUNT LEFTPUSH ROD &		

"W"

TYP.(4)
HOLD DOWN

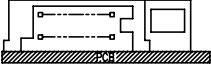
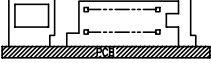
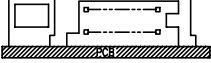
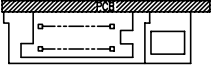
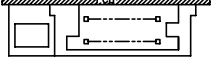
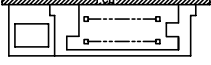
SECTION "W"-"W"

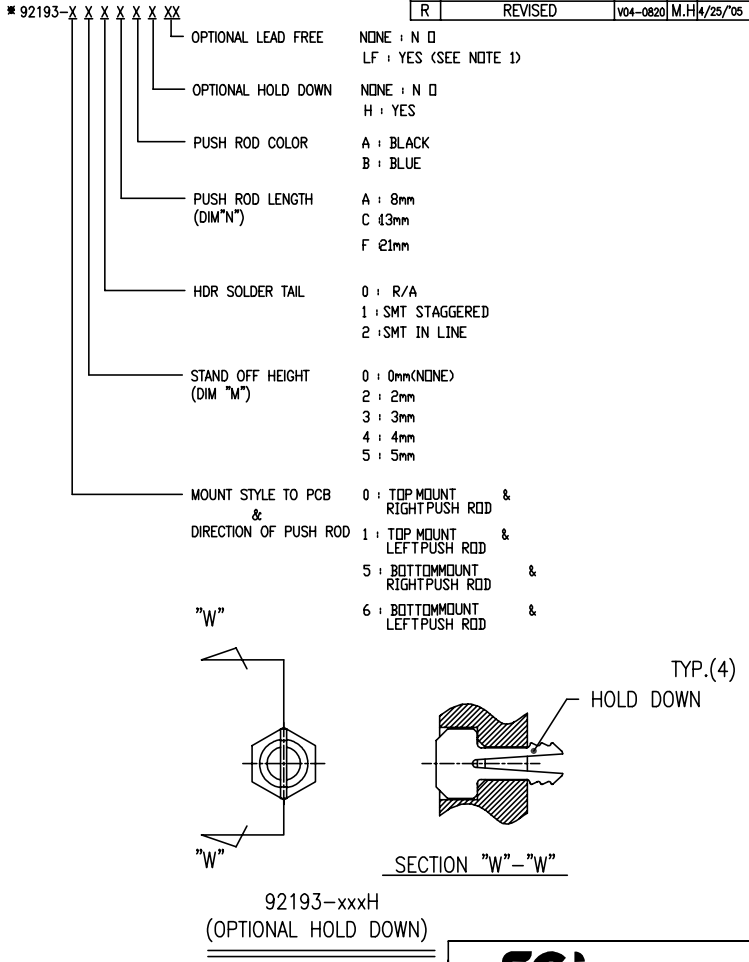
92193-xxxH
(OPTIONAL HOLD DOWN)

[illegible]

PRODUCT NO.
92193

REVISIONS			
REV	DESCRIPTION	ECN	BY DATE
A	CORRECT WRONG DRAWING	N09-0163	SH 6/3/09
B	REVISED	J30128	M.K 4/27/94
C	REVISED	J40163	M.K 5/28/94
D	REVISED	V40740	M.K 6/24/94
E	REVISED	V40840	M.K 7/5/94
F	REVISED	J40198	M.K 7/19/94
G	REVISED	V32120	M.K 12/27/94
H	REVISED	J40349	M.K 1/20/95
J	REVISED	J50242	M.K 9/18/95
K	REVISED	V60956	M.K 7/29/96
L	REVISED/ADDED-050CAH -130CA -130CAH	J70134	K.S 8/8/97
M	REVISED	N90076	M.K 7/22/99
N	REVISED (ADDED-502FA)	V91595	M.K 11/11/99
P	REVISED	J05-0198	M.H 4/4/05
R	REVISED	V04-0820	M.H 4/25/05

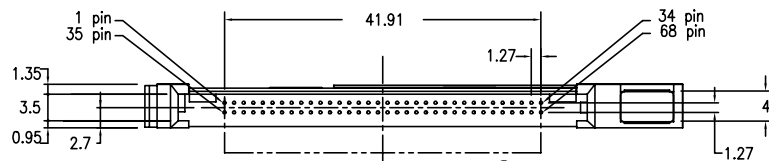
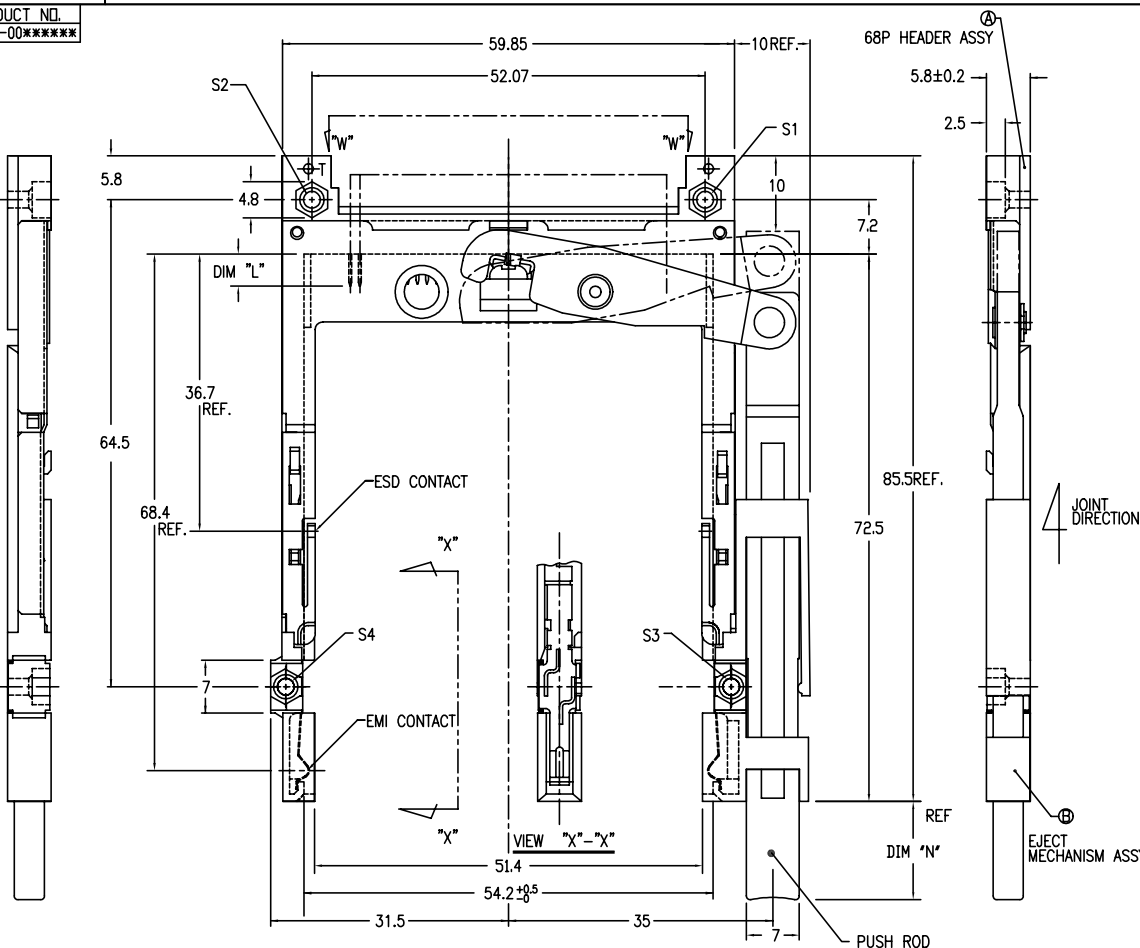
PRODUCT NO. *92193-XXXXX	STAND OFF(mm)	DIM "N" (mm)	PUSH ROD COLOR	HDR SOLDER TAIL	HOLD DOWN	MECH ASSY 92192-XXXXX	HDR ASSY 92140-XXXX	DIM "P" (mm)	HDR COLOR	SHEET NO.	MOUNT STYLE TO PCB & DIRECTION OF PUSH ROD
△ 000AALF	0	8	BLACK	R/A	NONE	00AA	000LF	2.8	BLACK	NO.2	 TOP MOUNT TO PCB & RIGHT PUSH ROD
△ 000CALF	0	13	BLACK	R/A	NONE	00CA	000LF	2.8			
△ 000CAHLF	0	13	BLACK	R/A	YES	00CAH	000HLF	2.8			
△ 000CBLF	0	13	BLUE	R/A	NONE	00CB	000LF	2.8			
△ 000CBHLF	0	13	BLUE	R/A	YES	00CBH	000HLF	2.8			
△ 000FALF	0	21	BLACK	R/A	YES	00FA	000LF	2.8			
△ 001AA	0	8	BLACK	SMT STAGGERED	NONE	00AA	001	—#			
△ 001AAH	0	8	BLACK	SMT STAGGERED	YES	00AAH	001H	—#			
△ 001CA	0	13	BLACK	SMT STAGGERED	NONE	00CA	001	—#			
△ 001CAH	0	13	BLACK	SMT STAGGERED	YES	00CAH	001H	—#			
△ 001FA	0	21	BLACK	SMT STAGGERED	NONE	00FA	001	—#			
△ 001FAH	0	21	BLACK	SMT STAGGERED	YES	00FAH	001H	—#			
△ 002CA	0	13	BLACK	SMT IN LINE	NONE	00CA	002	—#	BLACK	NO.3	 TOP MOUNT TO PCB & LEFT PUSH ROD
△ 002CAH	0	13	BLACK	SMT IN LINE	YES	00CAH	002H	—#			
△ 020CALF	2	13	BLACK	R/A	NONE	02CA	040LF	2.5			
△ 040CALF	4	13	BLACK	R/A	NONE	04CA	010LF	2.8			
△ 050CALF	5	13	BLACK	R/A	NONE	05CA	020LF	2.8			
△ 050CAHLF	5	13	BLACK	R/A	YES	05CAH	020HLF	2.8			
△ 100CALF	0	13	BLACK	R/A	NONE	10CA	000LF	2.8			
△ 100CAHLF	0	13	BLACK	R/A	YES	10CAH	000HLF	2.8			
△ 101CA	0	13	BLACK	SMT STAGGERED	NONE	10CA	001	—#			
△ 101CAH	0	13	BLACK	SMT STAGGERED	YES	10CAH	001H	—#			
△ 101FA	0	21	BLACK	SMT STAGGERED	NONE	10FA	001	—#	BLACK	NO.4	 TOP MOUNT TO PCB & LEFT PUSH ROD
△ 101FAH	0	21	BLACK	SMT STAGGERED	YES	10FAH	001H	—#			
△ 102CA	0	13	BLACK	SMT IN LINE	NONE	10CA	002	—#			
△ 102CAH	0	13	BLACK	SMT IN LINE	YES	10CAH	002H	—#			
△ 120CALF	2	13	BLACK	R/A	NONE	12CA	040LF	2.5			
△ 120CAHLF	2	13	BLACK	R/A	YES	12CAH	040HLF	2.5			
△ 120FALF	2	21	BLACK	R/A	NONE	12FA	040LF	2.5			
△ 130CALF	3	13	BLACK	R/A	NONE	13CA	050LF	2.8			
△ 130CAHLF	3	13	BLACK	R/A	YES	13CAH	050HLF	2.8			
△ 140CALF	4	13	BLACK	R/A	NONE	14CA	010LF	2.8			
△ 150CALF	5	13	BLACK	R/A	NONE	15CA	020LF	2.8	NATURAL	NO.6	 BOTTOM MOUNT TO PCB & RIGHT PUSH ROD
△ 500CALF	0	13	BLACK	R/A	NONE	10CA	500LF	2.8			
△ 500CAHLF	0	13	BLACK	R/A	YES	10CAH	500HLF	2.8			
△ 500FALF	0	21	BLACK	R/A	NONE	10FA	500LF	2.8			
△ 501CA	0	13	BLACK	SMT STAGGERED	NONE	10CA	501	—#			
△ 501CAH	0	13	BLACK	SMT STAGGERED	YES	10CAH	501H	—#			
△ 502CA	0	13	BLACK	SMT IN LINE	NONE	10CA	502	—#			
△ 502CAH	0	13	BLACK	SMT IN LINE	YES	10CAH	502H	—#			
△ 502FA	0	21	BLACK	SMT IN LINE	NONE	10FA	502	—#			
△ 520CALF	2	13	BLACK	R/A	NONE	12CA	540LF	2.5			
△ 540CALF	4	13	BLACK	R/A	NONE	14CA	510LF	2.8	NATURAL	NO.7	 BOTTOM MOUNT TO PCB & LEFT PUSH ROD
△ 550CALF	5	13	BLACK	R/A	NONE	15CA	520LF	2.8			
△ 600CALF	0	13	BLACK	R/A	NONE	00CA	500LF	2.8			
△ 600CAHLF	0	13	BLACK	R/A	YES	00CAH	500HLF	2.8			
△ 601CA	0	13	BLACK	SMT STAGGERED	NONE	00CA	501	—#			
△ 601CAH	0	13	BLACK	SMT STAGGERED	YES	00CAH	501H	—#			
△ 602CA	0	13	BLACK	SMT IN LINE	NONE	00CA	502	—#			
△ 602CAH	0	13	BLACK	SMT IN LINE	YES	00CAH	502H	—#			
△ 620CALF	2	13	BLACK	R/A	NONE	02CA	540LF	2.5			
△ 640CALF	4	13	BLACK	R/A	NONE	04CA	510LF	2.8	NATURAL	NO.9	 BOTTOM MOUNT TO PCB & LEFT PUSH ROD
△ 650CALF	5	13	BLACK	R/A	NONE	05CA	520LF	2.8			



NOTE
1.THIS PRODUCT MEETS EUROPEAN UNION
DIRECTIVES AND OTHER COUNTRY
REGULATIONS AS DESCRIBED IN GS-22-008.

SHEET INDEX	ISSUE SH NO.	MAT	DR M.Hasegawa	DATE 4/25/05	CUSTOMER COPY	FILE 68P EJECTOR HEADER ASSY FOR TYPE I / II / III (FOR 5.0V)
LINEAR		FINISH	CHK M.Hasegawa	4/25/05	THIRD ANGLE PROJ	PRODUCT FAMILY SANF Header PCMCIA
ANGLES			APPD		SCALE UNIT	DWG. NO. REV SHEET
					UNIT	92193 V 2 of 2

PRODUCT NO.
92193-00*****



NOTE

- EJECT FORCE 3.5Kg MAX.
- ASSY PROCESS
 - TO MOUNT PART ① ON PWB WITH SCREW (S1,S2) AND SOLDER.
 - TO JOINT PART ② INTO PART ①, THEN FIX PART ③ WITH 2 SCREWS (S3,S4).
- EJECT TRAVEL 8.0mm
- MATERIAL
 - PART ① (HEADER ASSY)
 - HOUSING : LCP UL94V-0
 - PIN : PHOSPHOR BRONZE
 - PART ② (EJECT MECHANISM ASSY)
 - GUIDE : POLYPHTHARAMID UL94V-0 BLACK
 - PUSH ROD : FLAME RETARDANT UL94V-0
 - PLATE : STAINLESS
 - EMI CONTACT : PHOSPHOR BRONZE
 - OPTIONAL HOLD-DOWN : BRASS

⑤ FINISH
5.1 PIN

UNDER PLATING : 0.5µm MIN. Ni
CONTACT AREA : 0.1µm MIN. Au OVER 0.5µm MIN. Pd-Ni
SOLDER TAIL : 2.5µm MIN. Sn-Pb
OR 2.5µm MIN. PURE Sn.(FOR -*****LF)

5.2 EMI CONTACT

UNDER PLATING : 2.0µm MIN. Ni
CONTACT AREA : 0.5µm MIN. Au

5.3 OPTIONAL HOLD-DOWN : 2.5µm MIN. PURE Sn.

6. PIN NO.

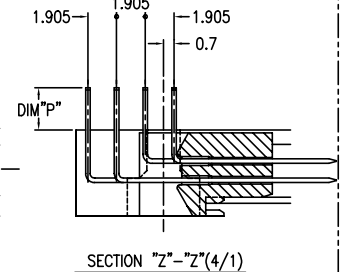
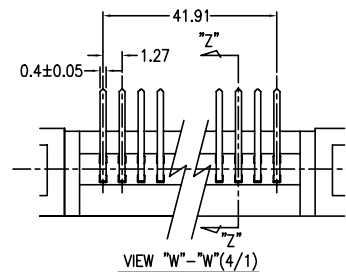
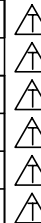
	DIM "L"		
	4.25±0.1	3.5±0.1	5.0±0.1
PIN No.	OTHERS	36.67	1.734 35.51.68

- SEE TA-946 FOR PCB LAYOUT.
- SEE 92140 FOR DETAILED HDR DIMENSION.
- SEE SHEET 1,2 REGARDING COMPONENTS.
- GENERAL TOLERANCE : ±0.3

REVISED				REVISIONS			
L	REVISED	J05-0198	M.H.4/4/05	REV	DESCRIPTION	ECN	BY DATE
M	REVISED	V04-0820	M.H.4/25/05	F	REVISED	J40198	M.K.7/19/94
T	REVISED (ADDED -*****LF)	N05-0127	WB J05/18/05	G	REVISED	V32120	M.K.12/27/94
U				H	REVISED	J40349	M.K.1/9/95
V				J	REVISED	J50242	M.K.9/18/95
				K	REVISED	J70134	K.S.8/8/97

PRODUCT NO.

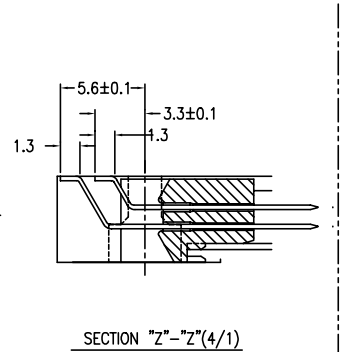
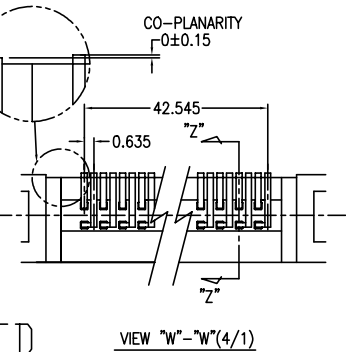
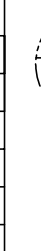
92193-000AA/000AALF
92193-000CA/000CALF
92193-000CAH/000CAHLF
92193-000CB/000CBLF
92193-000CBH/000CBHLF
92193-000FA/000FALF



R/A

PRODUCT NO.

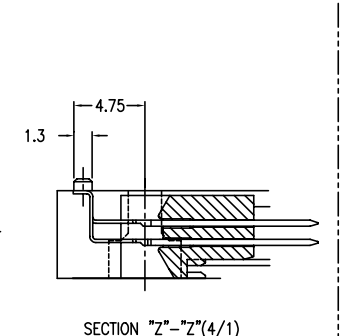
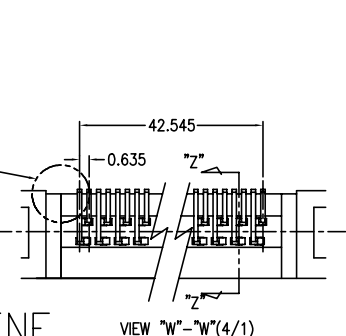
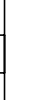
92193-001AA
92193-001AAH
92193-001CA
92193-001CAH
92193-001FA
92193-001FAH



SMT
STAGGERED

PRODUCT NO.

92193-002CA
92193-002CAH



SMT
SMT IN LINE

SHEET INDEX		ISSUE		SH NO.		MAT		DR		DATE		CUSTOMER		TITLE	
						SEE NOTE ④		M.Hasegawa		4/25/05		COPY		68P EJECTOR HEADER ASSY FOR TYPE I/II/III (FOR 5.0V)	
LINEAR						FINISH		CHK		4/25/05		THRO ANGLE PROJ		PRODUCT FAMILY SANF Header PCMCIA	
ANGLES						SEE NOTE ⑤		APPD				UNIT mm		SCALE 2/1	
												SIZE C		DWG. NO. 92193	
												REV V		SHEET 3 OF 3	



DF-003A REV F

DO NOT SCALE PRINT THIS INFORMATION IS CONFIDENTIAL AND IS DISCLOSED TO YOU ON CONDITION THAT NO FURTHER DISCLOSURE IS MADE BY YOU TO OTHER THAN FCI PERSONNEL WITHOUT WRITTEN AUTHORIZATION FROM FCI JAPAN K.K.

PDM: Rev:V

STATUS:Released

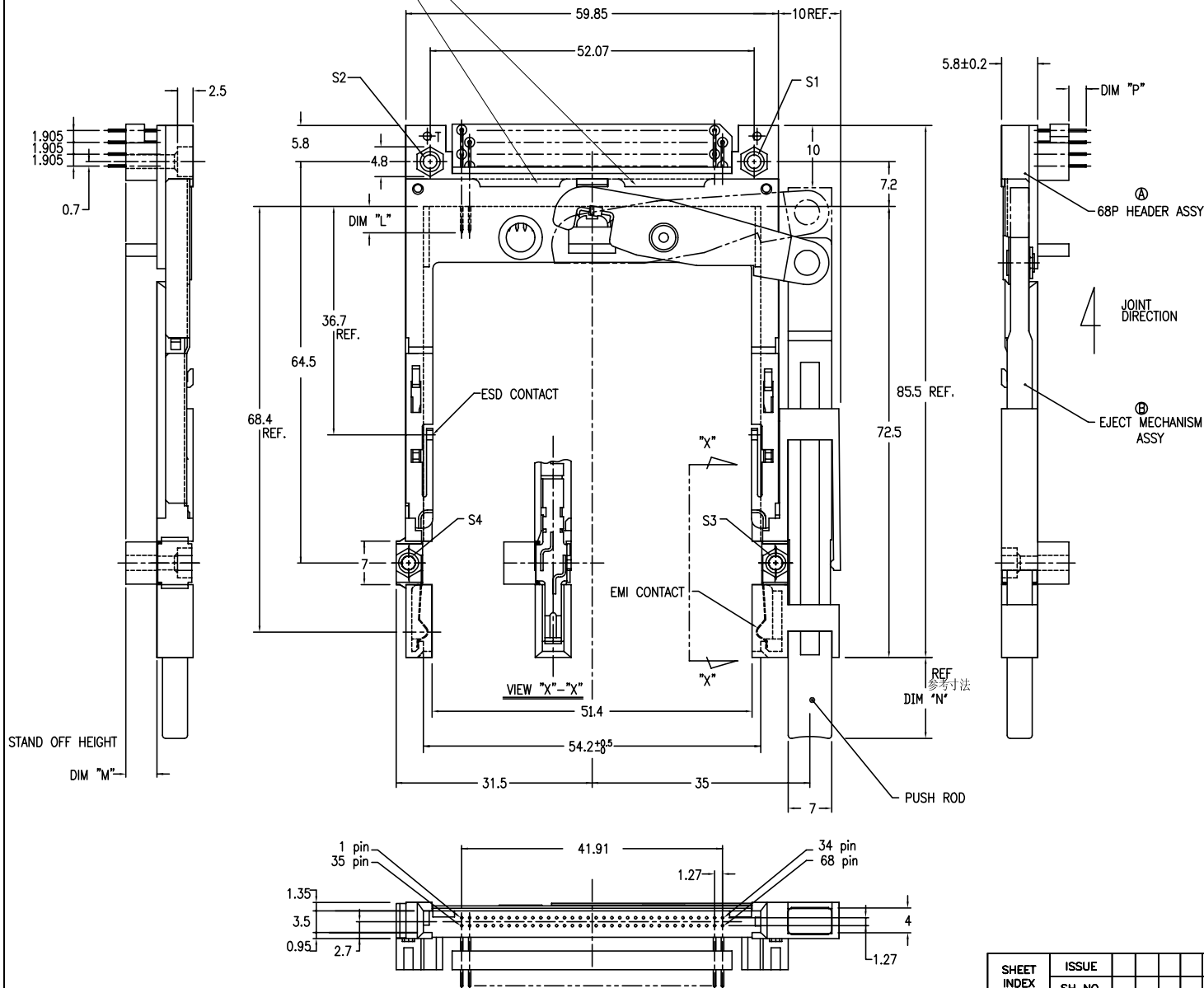
Printed: Feb 20, 2010

PRODUCT NO.
92193-020CA/020CALF
92193-040CA/040CALF
92193-050CA/050CALF
92193-050CAH/050CAHLF



REVISION V

REVISIONS				
REV	DESCRIPTION	ECN	BY	DATE
A	RELEASED	J30022	N.T	1/19/'93
B	REVISED	J40163	M.K	5/26/'94
C	REVISED	V40840	M.K	7/ 5/'94
D	REVISED	V32120	M.K	12/27/'94
E	REVISED	J40349	M.K	1/9/'95
F	REVISED	J50242	M.K	8/18/'95
G	REVISED (ADDED-050CAH)	J70134	K.S	8/8/'97
T	REVISED (ADDED-*****LF)	N05-0127	WB	J05/18/05
U				
V				



NOTE

- EJECT FORCE 3.5Kg MAX.
- ASSY PROCESS
2.1 TO MOUNT PART ④ ON PWB WITH SCREW (S1,S2) AND SOLDER.
2.2 TO JOINT PART ⑤ INTO PART ④, THEN FIX PART ⑤ WITH 2 SCREWS (S3,S4).
- EJECT TRAVEL 8.0mm

④ MATERIAL

- PART ④ (HEADER ASSY)
HOUSING : LCP UL94V-0
PIN : PHOSPHOR BRONZE
- PART ⑤ (EJECT MECHANISM ASSY)
GUIDE : POLYPHTHARAMID UL94V-0 BLACK
PUSH ROD : FLAME RETARDANT UL94V-0
PLATE : STAINLESS
EMI CONTACT : PHOSPHOR BRONZE
STANDOFF : ZINC ALLOYS DIE CASTING

⑤ FINISH

- PIN
UNDER PLATING : 0.5μm MIN. Ni
CONTACT AREA : 0.1μm MIN. Au OVER 0.5μm MIN. Pd-Ni
SOLDER TAIL : 2.5μm MIN. Sn-Pb
OR 2.5μm MIN. PURE Sn.(FOR *****LF)

5.2 EMI CONTACT

- UNDER PLATING : 2.0μm MIN. Ni
CONTACT AREA : 0.5μm MIN. Au

- STAND OFF : 3 ~5μm Ni, OVER 5 ~10μm Cu.

6. PIN NO.

PIN No.	DIM "L"		
	4.25±0.1	3.5±0.1	5.0±0.1
OTHERS	36.67	1.17, 34	35, 51, 68

- SEE TA-946 FOR PCB LAYOUT.
- SEE 92140 FOR DETAILED HDR DIMENSION.
- SEE SHEET 1, 2 REGARDING COMPONENTS.
- GENERAL TOLERANCE : ±0.3.

STAND OFF HEIGHT

DIM "M"

DF-003A REV C

DO NOT SCALE. PRINT THIS INFORMATION IS CONFIDENTIAL AND IS DISCLOSED TO YOU ON CONDITION THAT NO FURTHER DISCLOSURE IS MADE BY YOU TO OTHER THAN BERN PERSONNEL WITHOUT WRITTEN AUTHORIZATION FROM BERN ELECTRONICS JAPAN K.K.

SHEET INDEX		ISSUE		SH NO.		MAT		DR		DATE		CUSTOMER		TITLE	
TOLERANCES UNLESS OTHERWISE SPECIFIED		SEE NOTE ④		ENGR		T. Ino		8/8/'97		8/8/'97		COPY		68P EJECTOR HEADER ASSY FOR TYPE I/II/III (FOR 5.0V)	
LINEAR		FINISH		CHK		K. Suzuki		8/8/'97		THIRD ANGLE PROJ		UNIT		SCALE	
ANGLES		SEE NOTE ⑤		APPD										2/1	
														C	
														92193	
														V	
														4 of	



PDM: Rev:V

STATUS:Released

Printed: Feb 20, 2010



- ⑤ FINISH
5.1 PIN

UNDER PLATING : 0.5µm MIN. Ni
CONTACT AREA : 0.1µm MIN. Au OVER 0.5µm MIN. Pd-Ni
SOLDER TAIL : 2.5µm MIN. Sn-Pb
OR 2.5µm MIN. PURE Sn.(FOR -*****LF)

- 5.2 EMI CONTACT
UNDER PLATING : 2.0µm MIN. Ni
CONTACT AREA : 0.5µm MIN. Au
5.3 OPTIONAL HOLD-DOWN : 2.5µm MIN. PURE Sn

7. SEE TA-946 FOR PCB LAYOUT.
8. SEE 92140 FOR DETAILED HDR DIMENSION.
9. SEE SHEET1,2 REGARDING COMPONENTS.
10. GENERAL TOLERANCE : ± 0.3

	T
	U
	V

PRODUCT NO.
92193-100CA/100CALF
92193-100CAH/100CAHLF

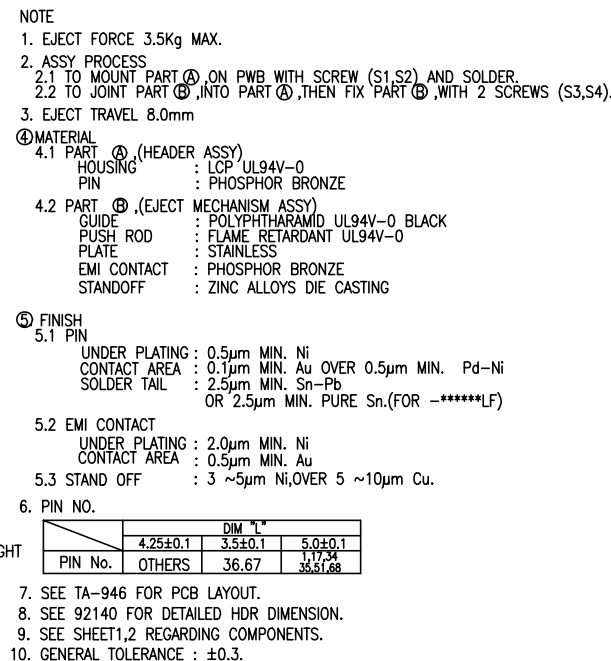
PRODUCT NO.
92193-102CA
92193-102CAH



TITLE	68P EJECTOR HEADER ASSY FOR TYPE I/II/III (FOR 5.0V)
-------	---

SCALE	SIZE	DWG. NO.	REV	SHEET
2/1	C	92193	V	5 OF

REV	DESCRIPTION	ECN	BY	DATE
A	RELEASED	J30022	N.T	1/19/94
B	REVISED	J40163	M.K	5/26/94
C	REVISED	V40840	M.K	7/15/94
D	REVISED	V32120	M.K	8/27/94
E	REVISED	J40349	M.K	9/19/95
F	REVISED	J50242	M.K	9/18/95
G	REVISED (ADDED-130CA -130CAH)	J70134	K.S	8/8/99
H	REVISED	N90076	M.K	7/28/99
T	REVISED (ADDED - REMOVED F)	N05-0127	WB J	05/18/04
U				
V				



△
△
△



1. EJECT FORCE 3.5Kg MAX.
2. ASSY PROCESS
 - 2.1 TO MOUNT PART ④ ON PWB WITH SCREW (S1,S2) AND SOLDER.
 - 2.2 TO JOINT PART ④ INTO PART ④, THEN FIX PART ④ WITH 2 SCREWS (S3,S4).
3. EJECT TRAVEL 8.0mm
- ④ MATERIAL
 - 4.1 PART ④ (HEADER ASSY)

HOUSING	: LCP UL94V-0
PIN	: PHOSPHOR BRONZE
 - 4.2 PART ④ (EJECT MECHANISM ASSY)

GUIDE	: POLYPHTHARAMID UL94V-0 BLACK
PUSH ROD	: FLAME RETARDANT UL94V-0
PLATE	: STAINLESS
EMI CONTACT	: PHOSPHOR BRONZE
 - 4.3 OPTIONAL HOLD-DOWN : BRASS

UNDER PLATING : 0.5µm MIN. Ni
CONTACT AREA : 0.1µm MIN. Au OVER 0.5µm MIN. Pd-Ni
SOLDER TAIL : 2.5µm MIN. Sn-Pb
OR 2.5µm MIN. PURE Sn.(FOR -*****LF)

UNDER PLATING : 2.0 μ m MIN. Ni
CONTACT AREA : 0.5 μ m MIN. Au

	DIM "L"		
	4.25±0.1	3.5±0.1	5.0±0.1
PIN No.	OTHERS	36.67	1.17, 34 35 51 68

7. SEE TA-946 FOR PCB LAYOUT.
8. SEE 92140 FOR DETAILED HDR DIMENSION.
9. SEE SHEET1,2 REGARDING COMPONENTS.
10. GENERAL TOLERANCE : ± 0.3 .

K	REVISED		V91595	M.K	11/11/99	REVISIONS				
T	REVISED	(ADDED - REMOVED)	N05-0127	WJ	05/18/05	REV	DESCRIPTION	ECN	BY	DATE
U						D	REVISED	V40840	M.K	7/ 5/94
V						E	REVISED	V32120	M.K	12/27/94
						F	REVISED	J40349	M.K	1/9/95
						G	REVISED	J50242	M.K	8/18/95
						H	REVISED	V60956	M.K	7/29/96
						J	REVISED	J70134	K.S	8/8/97

SMT
STAGGERED

SECTION "Z"- "Z"(4/1)

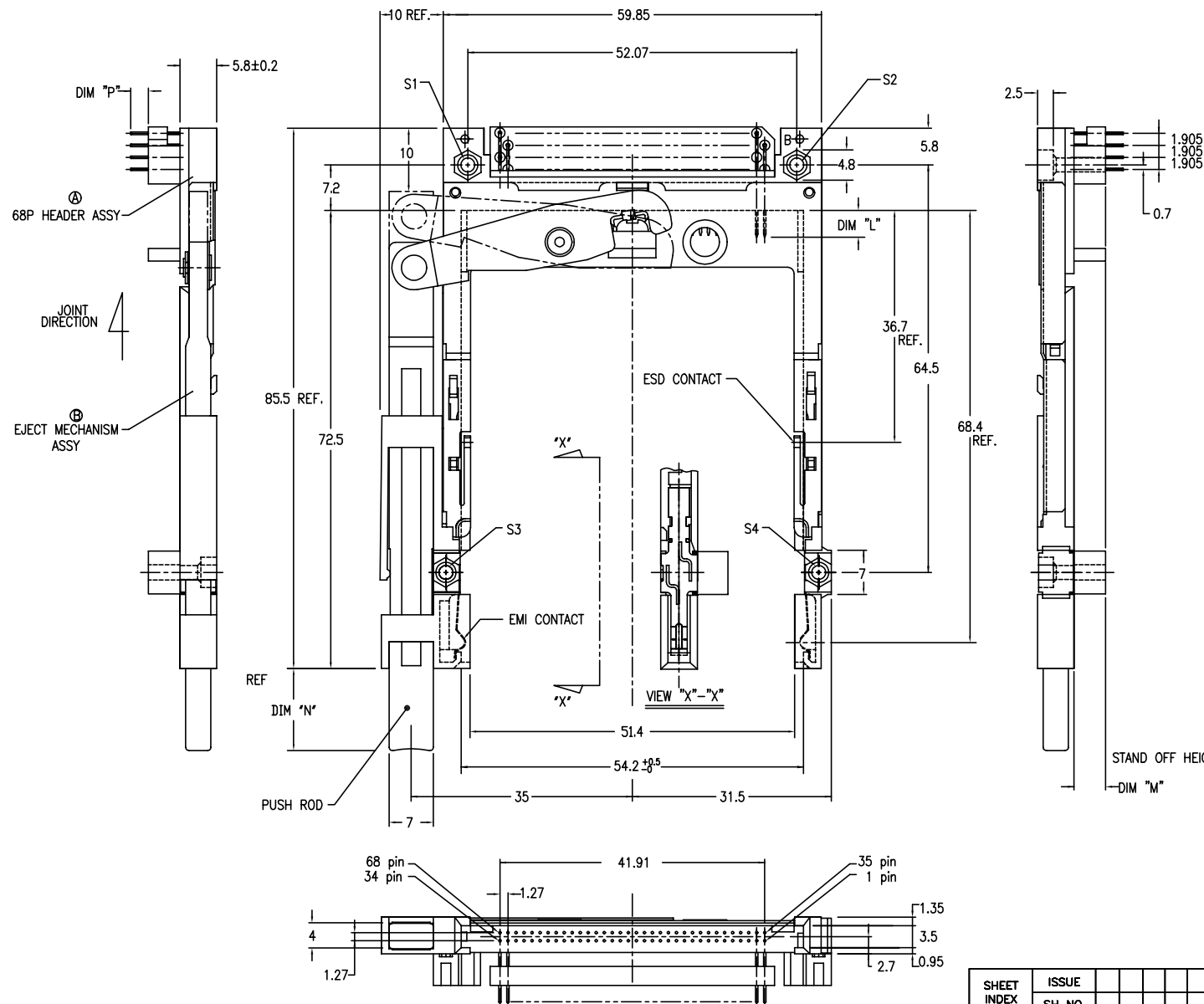
SMT IN LINE

SECTION "Z"-Z'(4/1)

[illegible]

PRODUCT NO.	
92193-520CA/520CALF	△
92193-540CA/540CALF	△
92193-550CA/550CALF	△

REVISIONS				
REV	DESCRIPTION	ECN	BY	DATE
A	RELEASED	J30022	N.T	1/19/93
B	REVISED	J30128	M.N	4/27/93
C	REVISED	J40163	M.K	5/26/94
D	REVISED	V40840	M.K	7/ 5/94
E	REVISED	V32120	M.K	12/27/94
F	REVISED	J40349	M.K	1/9/94
G	REVISED	J50242	M.K	9/18/95
T	REVISED (ADDED -*****LF)	N05-0127	WB	J05/18/05
U				
V				



NOTE

- EJECT FORCE 3.5Kg MAX.
- ASSY PROCESS
 - TO MOUNT PART ④ ON PWB WITH SCREW (S1,S2) AND SOLDER.
 - TO JOINT PART ⑤ INTO PART ④, THEN FIX PART ⑤ WITH 2 SCREWS (S3,S4)
- EJECT TRAVEL 8.0mm
- MATERIAL
 - PART ④ (HEADER ASSY)
 - HOUSING : LCP UL94V-0
 - PIN : PHOSPHOR BRONZE
 - PART ⑤ (EJECT MECHANISM ASSY)
 - GUIDE : POLYPHTHARAMID UL94V-0 BLACK
 - PUSH ROD : FLAME RETARDANT UL94V-0
 - PLATE : STAINLESS
 - EMI CONTACT : PHOSPHOR BRONZE
 - STANDOFF : ZINC ALLOYS DIE CASTING
- FINISH
 - PIN
 - UNDER PLATING : 0.5μm MIN. Ni
 - CONTACT AREA : 0.1μm MIN. Au OVER 0.5μm MIN. Pd-Ni
 - SOLDER TAIL : 2.5μm MIN. Sn-Pb
 - OR 2.5μm MIN. PURE Sn (FOR -*****LF)
 - EMI CONTACT
 - UNDER PLATING : 2.0μm MIN. Ni
 - CONTACT AREA : 0.5μm MIN. Au
 - STAND OFF : 3 ~5μm Ni, OVER 5 ~10μm Cu.
- PIN NO.

	DIM "L"		
	4.25±0.1	3.5±0.1	5.0±0.1
PIN No.	OTHERS	36.67	17.34 35.51.68
- SEE TA-946 FOR PCB LAYOUT.
- SEE 92140 FOR DETAILED HDR DIMENSION.
- SEE SHEET1,2 REGARDING COMPONENTS.
- GENERAL TOLERANCE : ±0.3.

STAND OFF HEIGHT

DIM "M"

DF-003A REV C

DO NOT SCALE PRINT THIS INFORMATION IS CONFIDENTIAL AND IS DISCLOSED TO YOU ON CONDITION THAT NO FURTHER DISCLOSURE IS MADE BY YOU TO OTHER THAN BERN PERSONNEL WITHOUT WRITTEN AUTHORIZATION FROM BERN ELECTRONICS JAPAN K.K.

SHEET INDEX		ISSUE																																																																																																																																																																																																																																																																																																																																																																																																																																																																																																																																																																																																																																																																																																																																																																																																																																																																																																																																																																																																																																																																																																																																																																																																																																																																																																																																																																																																																																																													
-------------	--	-------	--	--	--	--	--	--	--	--	--	--	--	--	--	--	--	--	--	--	--	--	--	--	--	--	--	--	--	--	--	--	--	--	--	--	--	--	--	--	--	--	--	--	--	--	--	--	--	--	--	--	--	--	--	--	--	--	--	--	--	--	--	--	--	--	--	--	--	--	--	--	--	--	--	--	--	--	--	--	--	--	--	--	--	--	--	--	--	--	--	--	--	--	--	--	--	--	--	--	--	--	--	--	--	--	--	--	--	--	--	--	--	--	--	--	--	--	--	--	--	--	--	--	--	--	--	--	--	--	--	--	--	--	--	--	--	--	--	--	--	--	--	--	--	--	--	--	--	--	--	--	--	--	--	--	--	--	--	--	--	--	--	--	--	--	--	--	--	--	--	--	--	--	--	--	--	--	--	--	--	--	--	--	--	--	--	--	--	--	--	--	--	--	--	--	--	--	--	--	--	--	--	--	--	--	--	--	--	--	--	--	--	--	--	--	--	--	--	--	--	--	--	--	--	--	--	--	--	--	--	--	--	--	--	--	--	--	--	--	--	--	--	--	--	--	--	--	--	--	--	--	--	--	--	--	--	--	--	--	--	--	--	--	--	--	--	--	--	--	--	--	--	--	--	--	--	--	--	--	--	--	--	--	--	--	--	--	--	--	--	--	--	--	--	--	--	--	--	--	--	--	--	--	--	--	--	--	--	--	--	--	--	--	--	--	--	--	--	--	--	--	--	--	--	--	--	--	--	--	--	--	--	--	--	--	--	--	--	--	--	--	--	--	--	--	--	--	--	--	--	--	--	--	--	--	--	--	--	--	--	--	--	--	--	--	--	--	--	--	--	--	--	--	--	--	--	--	--	--	--	--	--	--	--	--	--	--	--	--	--	--	--	--	--	--	--	--	--	--	--	--	--	--	--	--	--	--	--	--	--	--	--	--	--	--	--	--	--	--	--	--	--	--	--	--	--	--	--	--	--	--	--	--	--	--	--	--	--	--	--	--	--	--	--	--	--	--	--	--	--	--	--	--	--	--	--	--	--	--	--	--	--	--	--	--	--	--	--	--	--	--	--	--	--	--	--	--	--	--	--	--	--	--	--	--	--	--	--	--	--	--	--	--	--	--	--	--	--	--	--	--	--	--	--	--	--	--	--	--	--	--	--	--	--	--	--	--	--	--	--	--	--	--	--	--	--	--	--	--	--	--	--	--	--	--	--	--	--	--	--	--	--	--	--	--	--	--	--	--	--	--	--	--	--	--	--	--	--	--	--	--	--	--	--	--	--	--	--	--	--	--	--	--	--	--	--	--	--	--	--	--	--	--	--	--	--	--	--	--	--	--	--	--	--	--	--	--	--	--	--	--	--	--	--	--	--	--	--	--	--	--	--	--	--	--	--	--	--	--	--	--	--	--	--	--	--	--	--	--	--	--	--	--	--	--	--	--	--	--	--	--	--	--	--	--	--	--	--	--	--	--	--	--	--	--	--	--	--	--	--	--	--	--	--	--	--	--	--	--	--	--	--	--	--	--	--	--	--	--	--	--	--	--	--	--	--	--	--	--	--	--	--	--	--	--	--	--	--	--	--	--	--	--	--	--	--	--	--	--	--	--	--	--	--	--	--	--	--	--	--	--	--	--	--	--	--	--	--	--	--	--	--	--	--	--	--	--	--	--	--	--	--	--	--	--	--	--	--	--	--	--	--	--	--	--	--	--	--	--	--	--	--	--	--	--	--	--	--	--	--	--	--	--	--	--	--	--	--	--	--	--	--	--	--	--	--	--	--	--	--	--	--	--	--	--	--	--	--	--	--	--	--	--	--	--	--	--	--	--	--	--	--	--	--	--	--	--	--	--	--	--	--	--	--	--	--	--	--	--	--	--	--	--	--	--	--	--	--	--	--	--	--	--	--	--	--	--	--	--	--	--	--	--	--	--	--	--	--	--	--	--	--	--	--	--	--	--	--	--	--	--	--	--	--	--	--	--	--	--	--	--	--	--	--	--	--	--	--	--	--	--	--	--	--	--	--	--	--	--	--	--	--	--	--	--	--	--	--	--	--	--	--	--	--	--	--	--	--	--	--	--	--	--	--	--	--	--	--	--	--	--	--	--	--	--	--	--	--	--	--	--	--	--	--	--	--	--	--	--	--	--	--	--	--	--	--	--	--	--	--	--	--	--	--	--	--	--	--	--	--	--	--	--	--	--	--	--	--	--	--	--	--	--	--	--	--	--	--	--	--	--	--	--	--	--	--	--	--	--	--	--	--	--	--	--	--	--	--	--	--	--	--	--	--	--	--	--	--	--	--	--	--	--	--	--	--	--	--	--	--	--	--	--	--	--	--	--	--	--	--	--	--	--	--	--	--	--	--	--	--	--	--	--	--	--	--	--	--	--	--	--	--	--	--	--	--	--	--	--	--	--	--	--	--	--	--	--	--	--	--	--	--	--	--	--	--	--	--	--	--	--	--	--	--	--	--	--	--	--	--	--	--	--	--	--	--	--	--	--	--	--	--	--	--	--	--	--	--	--	--	--	--	--	--	--	--	--	--	--	--	--	--	--	--	--	--	--	--	--	--	--	--	--	--	--	--	--	--	--	--	--	--	--	--	--	--	--	--	--	--	--	--	--	--	--	--	--	--	--	--	--	--	--	--	--	--	--	--	--	--	--	--	--	--	--	--	--	--	--	--	--	--	--	--	--	--	--	--	--	--	--	--	--	--	--	--	--	--	--	--	--	--	--	--	--	--	--	--	--	--	--	--	--	--	--	--	--	--	--	--	--	--	--	--	--	--	--	--	--	--	--	--	--	--	--	--	--	--	--	--	--	--	--	--	--	--	--	--	--	--	--	--	--	--	--	--	--	--	--	--	--	--	--	--	--	--	--	--	--	--	--	--	--	--	--	--	--	--	--	--	--	--	--	--	--	--	--	--	--	--	--	--	--	--	--	--	--	--	--	--	--	--	--	--	--	--	--	--	--	--	--	--	--	--	--	--	--	--	--	--	--	--	--	--	--	--	--	--	--	--	--	--	--	--	--	--	--	--	--	--	--	--	--	--	--	--	--	--	--	--	--	--	--	--	--	--	--	--	--	--	--	--	--	--	--	--	--	--	--	--	--	--	--	--	--	--	--	--	--	--	--	--	--	--	--	--	--	--	--	--	--	--	--	--	--	--

△





⑤ FINISH
5.1 PIN

5.2 EMI CONTACT

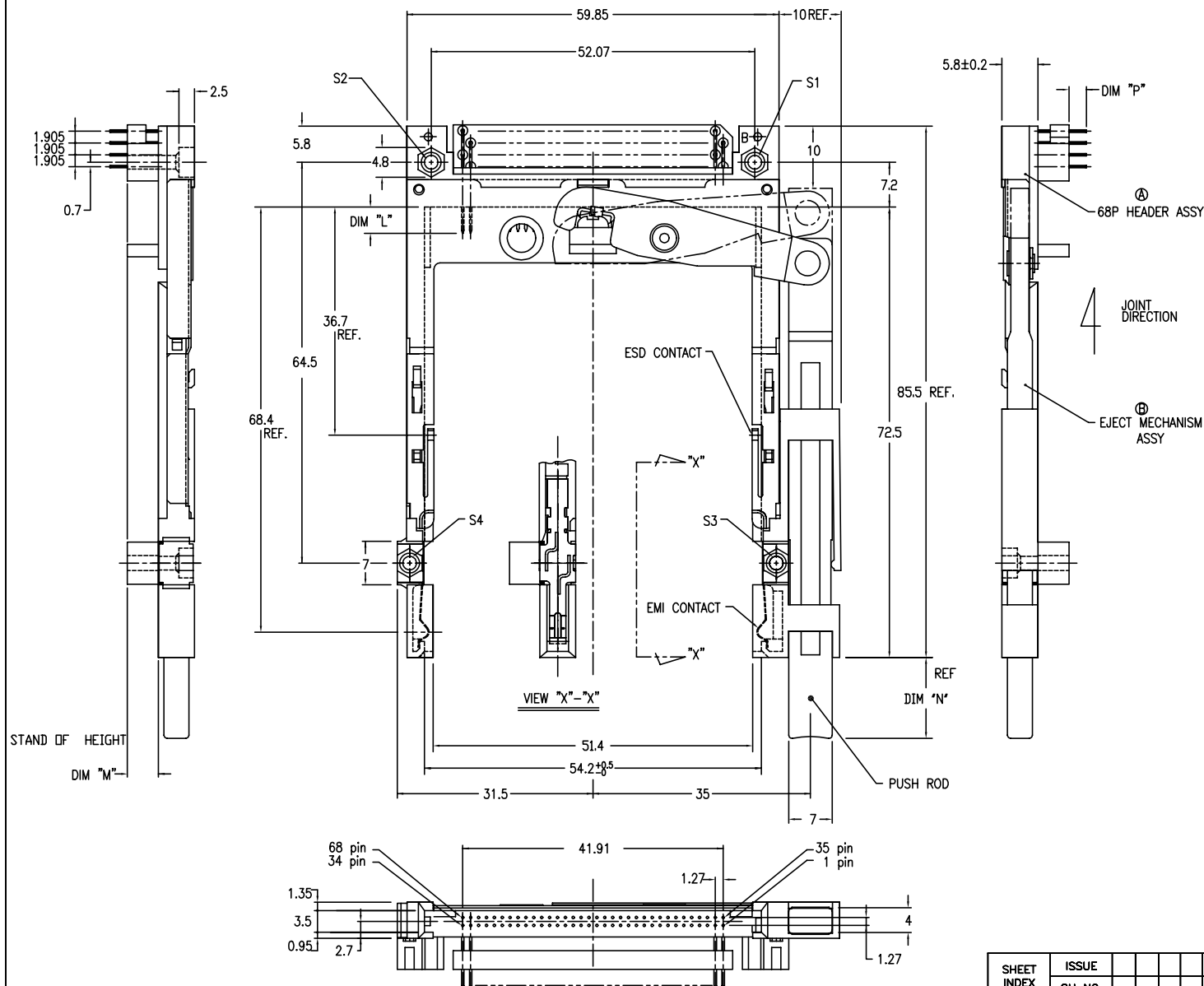
UNDER PLATING : 2.0µm MIN. Ni
CONTACT AREA : 0.5µm MIN. Au
OPTIONAL HOLD-DOWN : 2.5µm MIN. PURE Sn

7. SEE TA-946 FOR PCB LAYOUT.
8. SEE 92140 FOR DETAILED HDR DIMENSION.
9. SEE SHEET1,2 REGARDING COMPONENTS.
10. GENERAL TOLERANCE : ± 0.3

1

△	92193-620CA/620CALF
△	92193-640CA/640CALF
△	92193-650CA/650CALF

REVISIONS				
REV	DESCRIPTION	ECN	BY	DATE
A	RELEASED	J30022	N.T	1/19/'93
B	REVISED	J40163	M.K	5/26/'94
C	REVISED	V40840	M.K	7/ 5/'94
D	REVISED	V32120	M.K	12/27/'94
E	REVISED	J40349	M.K	1/6/'95
F	REVISED	J50242	M.K	9/18/'95
T	REVISED (ADDED -XXXXXX) F	N05-0127	WB J	05/18/05
U				
V				



1. EJECT FORCE 3.5Kg MAX.
2. ASSY PROCESS
 - 2.1 TO MOUNT PART ① ON PWB WITH SCREW (S1,S2) AND SOLDER.
 - 2.2 TO JOINT PART ② INTO PART ①, THEN FIX PART ② WITH 2 SCREWS (S3,S4).
3. EJECT TRAVEL 8.0mm

④ MATERIAL

4.1 PART (A) (HEADER ASSY)

HOUSING : LCP UL94V-0

PIN : PHOSPHOR BRONZE

4.2 PART (B) (EJECT MECHANISM ASSY)

GUIDE : POLYTHETARAMID UL94V-0 BLACK

PUSH ROD : FLAME RETARDANT UL94V-0

PLATE : STAINLESS

EMI CONTACT : PHOSPHOR BRONZE

STANDOFF : ZINC ALLOYS DIE CASTING

⑤ FINISH
5.1 PIN

UNDER PLATING: 0.5µm MIN. Ni
CONTACT AREA: 0.1µm MIN. Au OVER 0.5µm MIN. Pd-Ni
SOLDER TAIL: 2.5µm MIN. Sn-Pb
OR 2.5µm MIN. PURE Sn.(FOR -*****LF)

5.2 EMI CONTACT
UNDER PLATING : 2.0 μ m MIN. Ni
CONTACT AREA : 0.5 μ m MIN. Au
5.3 STAND OFF : 3 ~5 μ m Ni, OVER 5 ~10 μ m Cu.

6. PIN NO.

	DIM "L"		
	4.25±0.1	3.5±0.1	5.0±0.1
PIN No.	OTHERS	36.67	1.17, 34 35 51 68

7. SEE TA-946 FOR PCB LAYOUT.
8. SEE 92140 FOR DETAILED HDR DIMENSION.
9. SEE SHEET1,2 REGARDING COMPONENTS.
10. GENERAL TOLERANCE : ± 0.3

[illegible]