

**Features**

- Supersmall size
- High reliability
- High speed switching

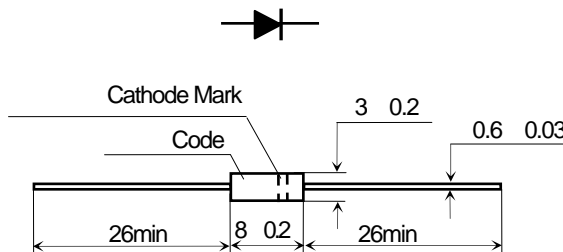
**Applications**

- Rectification for high voltage power supply of color T.V.
- CRT
- Rectification for high voltage power supply of CRT display.
- V.T.R
- Rectification for high voltage power supply of V.T.R camera.

Others

**Outline Dimensions and Mark**

Unit mm



Type	Code	Cathode Mark
2CL71(T)	T-71	⋈

**Limiting Values Absolute Maximum Rating**

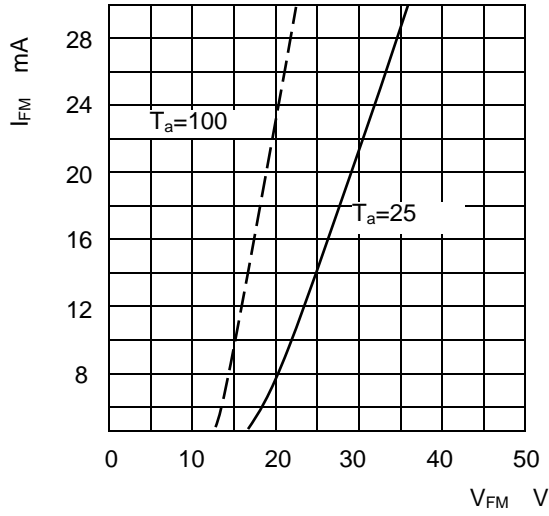
Item	Symbol	Unit	2CL71(T)
Repetitive Peak Reverse Voltage	$V_{RRM}$	kV	8
Non-Repetitive Peak Reverse Voltage	$V_{RSM}$	kV	10
Average Forward Current	$I_{F(AV)}$	mA	5 50Hz Half-sine wave, Resistance load, $T_a=25$
Surge(Non-repetitive)Forward Current	$I_{FSM}$	A	0.5 50Hz Half-sine wave, 1cycle, $T_a=25$
Operating Ambient Temperature	$T_a$		-40 ~ +100
Storage Temperature	$T_{stg}$		-40 ~ +120
Virtual Junction Temperature	$T_{(vj)}$		120

$T_a=25$

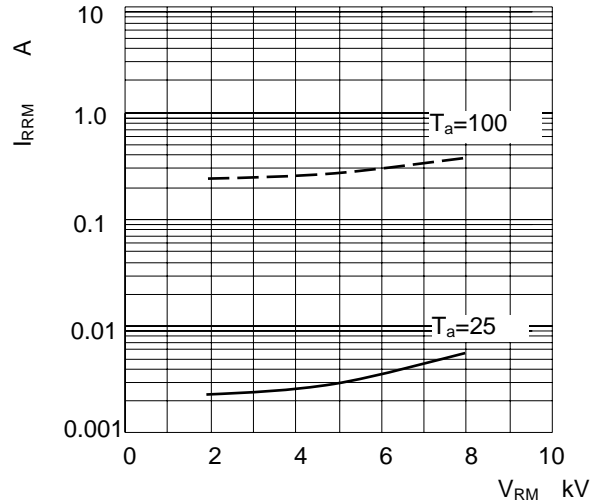
**Electrical Characteristics**  $T_a=25$  Unless otherwise specified

Item	Symbol	Unit	Test Condition	Max	
Peak Forward Voltage	$V_{FM}$	V	$I_{FM}=10mA$	36	
Peak Reverse Current	$I_{RRM1}$	A	$V_{RM}=V_{RRM}$	$T_a=25$	2
	$I_{RRM2}$			$T_a=100$	5
Reverse Recovery Time	$t_{rr}$	s	$I_F=2mA$ $I_{RM}=4mA$	0.08	

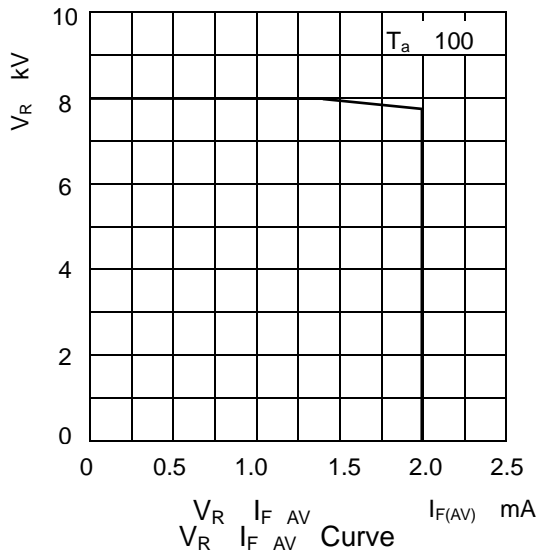
Characteristics(Typical)



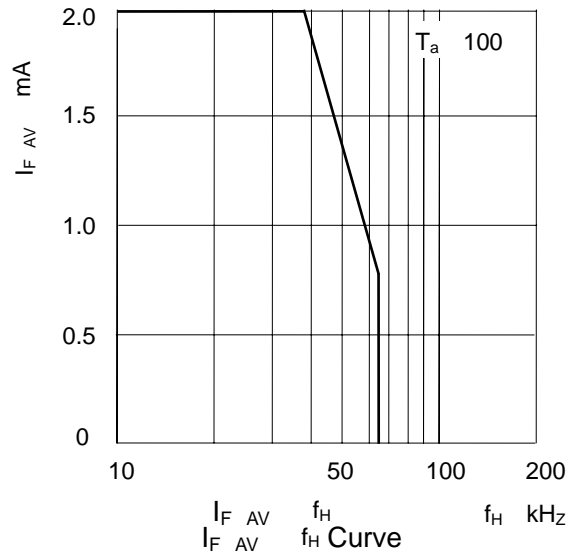
Forward Characteristics



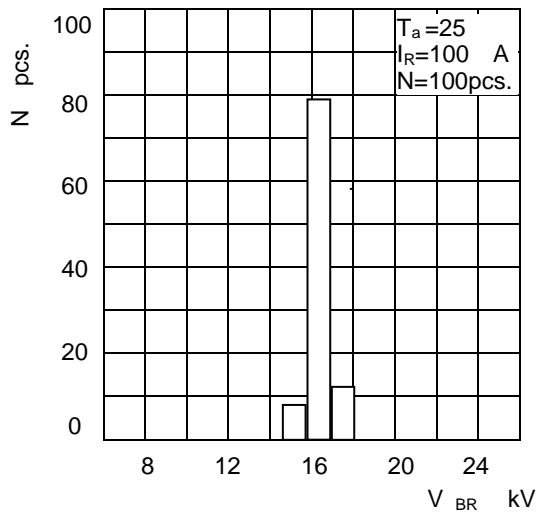
Reverse Characteristics



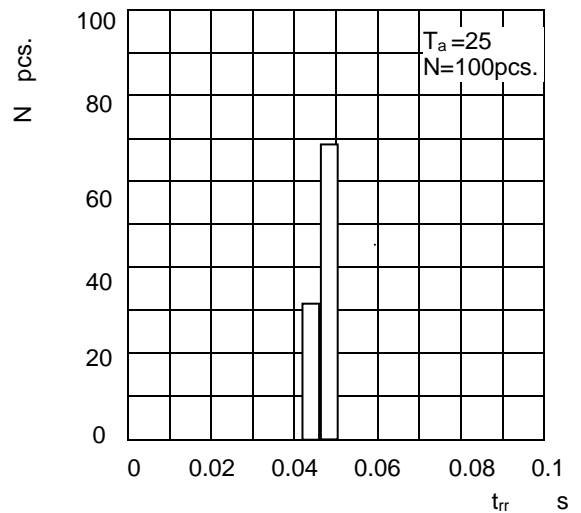
$V_R$   $I_{F(AV)}$  Curve



$I_{F(AV)}$   $f_H$  Curve



Breakdown Voltage Distribution



Reverse Recovery Time Distribution