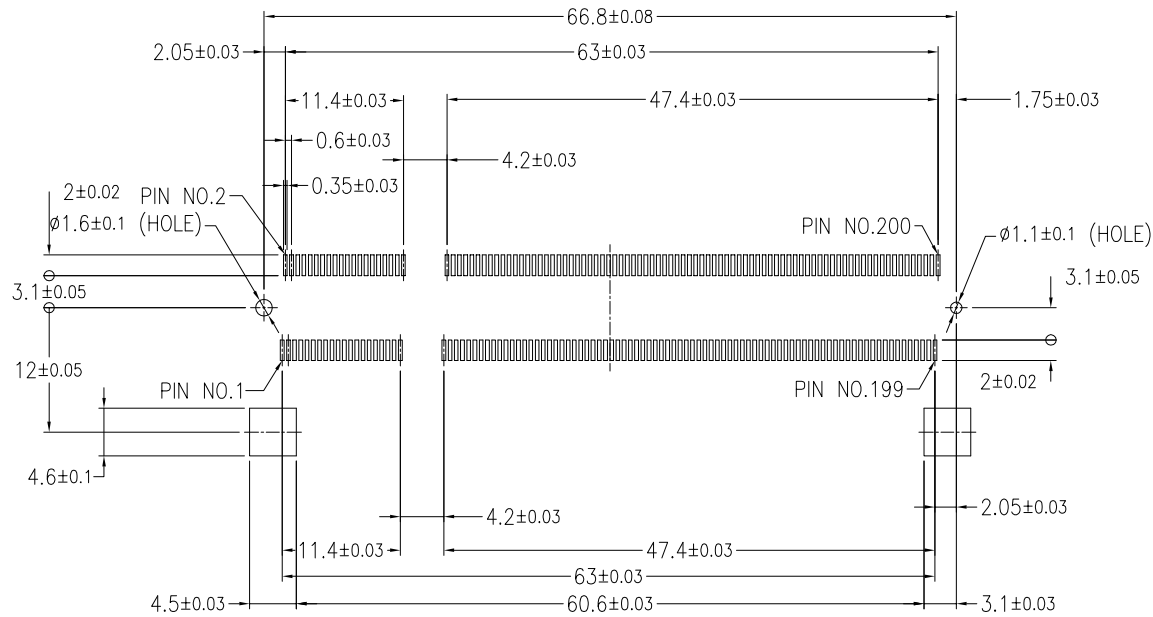




PRODUCT NO.
10033854-*52**

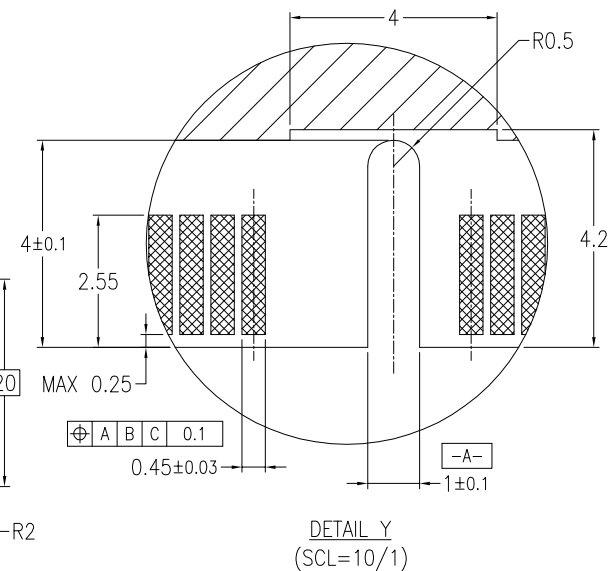
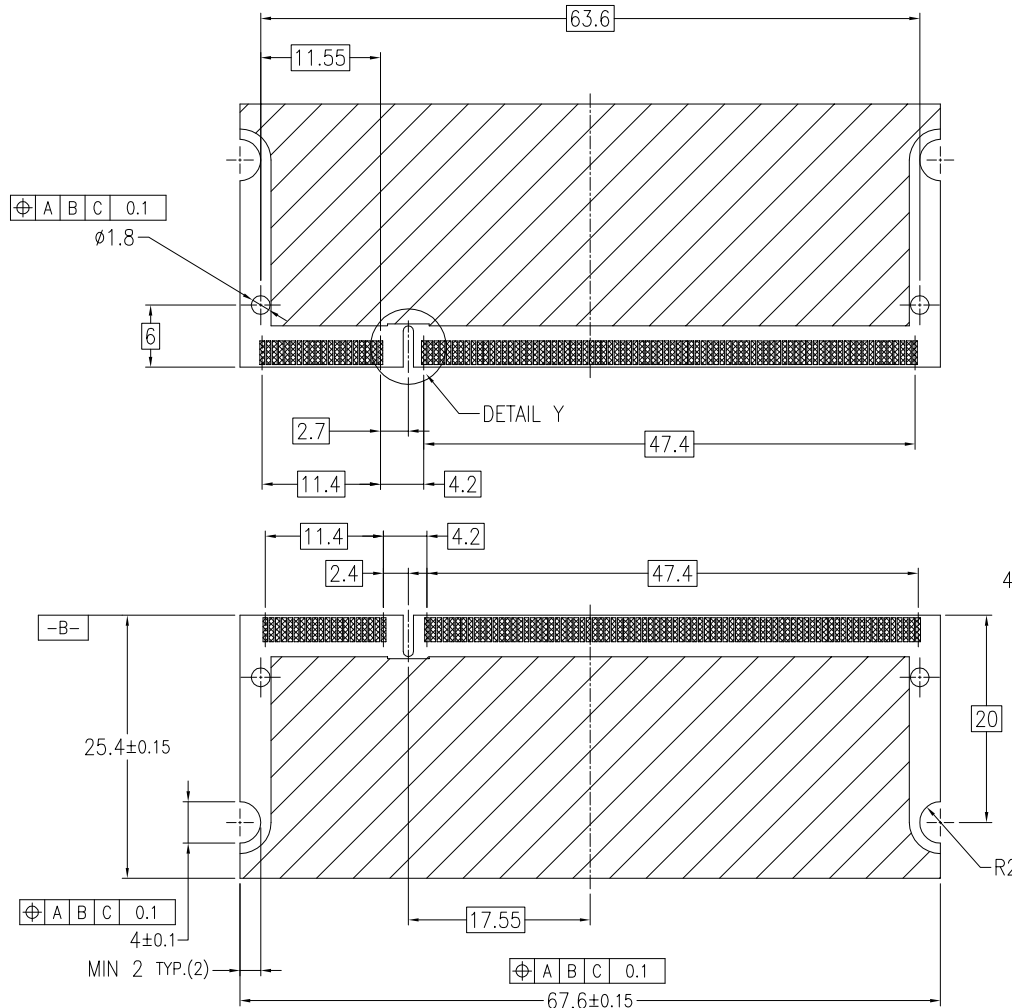
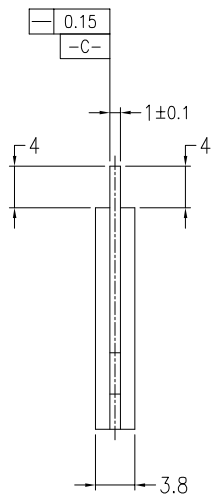


RECOMMENDED MOUNTING P.C.B LAYOUT

mat'l. code				tolerances unless otherwise specified		CUSTOMER COPY	www.fciconnect.com			
ltr	ecn no	dr	date	linear	.X ± 0.20 .XX ± 0.10					
D				angles	0° ±5°	projection				
				dr	M.Hasegawa 6/29/04	MM				
				enr	M.Hasegawa 6/29/04	scale	title DDR II 0.6 mm PITCH 200 POS. REVERSE TYPE ASS'Y product family 50UF SO-DIMM size dwg no 10033854 code JP sheet 2 of			
				chr		2:1				
				appd						
sheet index	revision sheet									



PRODUCT NO.
10033854-*52**



RECOMMENDED MODULE P.C.B LAYOUT

mat'l. code				tolerances unless otherwise specified				CUSTOMER COPY		<div><div>FCI</div><div>www.fciconnect.com</div></div>													
ltr	ecn no	dr	date	linear	.X ± 0.20				projection	title DDR II 0.6 mm PITCH 200 POS. REVERSE TYPE ASS'Y													
D					.XX ± 0.10																		
					angles	0° ±5°																	
				dr		M.Hasegawa	6/29/04		<div>MM</div>	product family 50UF SO-DIMM						code							
				engr	M.Hasegawa	6/29/04		size dwg no						JP									
				chr				scale						sheet									
				appd				2:1						B 10033854 3 of									
sheet index	revision sheet																						



PRODUCT NO.	LOCATING PEG	TERMINAL CONTACT AREA FINISH	HOLD DOWN FINISH	SOLDER TAIL FINISH
10033854-052FSLF	YES	Au FLASH	PURE Sn PLATING	Au FLASH
10033854-152FSLF	NO			
10033854-052TSLF	YES	Au 0.3um MIN.		
10033854-152TSLF	NO			
10033854-052ASLF	YES	Au 0.76um MIN.		
10033854-152ASLF	NO			
10033854-052FB	YES	Au FLASH	Sn-Pb PLATING	
10033854-152FB	NO			
10033854-052TB	YES	Au 0.3um MIN.		
10033854-152TB	NO			
10033854-052AB	YES	Au 0.76um MIN.		
10033853-152AB	NO			
10033854-252FSLF	YES	Au FLASH	PURE Sn PLATING	Pure Sn PLATING
10033854-352FSLF	NO			
10033854-252TSLF	YES	Au 0.3um MIN.		
10033854-352TSLF	NO			
10033854-252ASLF	YES	Au 0.76um MIN.		
10033854-352ASLF	NO			
10033854-252FB	YES	Au FLASH	Sn-Pb PLATING	
10033854-352FB	NO			
10033854-252TB	YES	Au 0.3um MIN.		
10033854-352TB	NO			
10033854-252AB	YES	Au 0.76um MIN.		
10033854-352AB	NO			
10033854-452FS	YES	Au FLASH	PURE Sn PLATING	Sn-Pb PLATING
10033854-552FS	NO			
10033854-452TS	YES	Au 0.3um MIN.		
10033854-552TS	NO			
10033854-452AS	YES	Au 0.76um MIN.		
10033854-552AS	NO			
10033854-452FB	YES	Au FLASH	Sn-Pb PLATING	
10033854-552FB	NO			
10033854-452TB	YES	Au 0.3um MIN.		
10033854-552TB	NO			
10033854-452AB	YES	Au 0.76um MIN.		
10033854-552AB	NO			

10033854-□□□□□ LF

<PACKING METHOD>
R : TAPE REEL
DEFAULT : TRAY


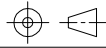
<HOLD DOWN FINISH>
S : Pure Sn
B : Sn-Pb
<CONTACT AREA FINISH>
F : Au FLASH
T : Au 0.3um MIN.
A : Au 0.76um MIN.

<TOTAL HEIGHT>
52 : 5.2mm

<LOCATING PEG, SOLDER TAIL FINISH>
0 : YES, Au FLASH
1 : NO, Au FLASH
2 : YES, Pure Sn PLATING
3 : NO, Pure Sn PLATING
4 : YES, Sn-Pb PLATING
5 : NO, Sn-Pb PLATING

For Rohs OPTIONS:
TAIL PLATING CODE MUST BE 0~3.
HOLD DOWN PLATING CODE MUST BE "S".
"LF" CODE IS EXIST IN THE END.
EX: 10033854-252TSLF

FOR NOT Rohs COMPATIBLE:
THIS "LF" CODE IS "BLANK".
EX:10033854-452TS

mat'l. code				tolerances unless otherwise specified		CUSTOMER COPY		 www.fciconnect.com							
ltr	ecn no	dr	date	linear	.X ± 0.20	projection		title							
D					.XX ± 0.10			DDR II 0.6 mm PITCH 200 POS. REVERSE TYPE ASS'Y							
				angles	0° ±5°			product family 50UF SO-DIMM							
				dr	M.Hasegawa 6/29/04	MM		size		dwg no		code			
				engr	M.Hasegawa 6/29/04	scale		B		10033854		JP			
				chr		2:1						sheet			
				appd								4 of			
sheet index	revision														
	sheet														