

Telecom Performance TCXO / VCTCXO

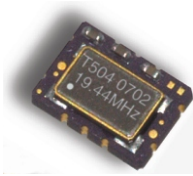


2111 Comprehensive Drive
Aurora, Illinois 60505
Phone: 630-851-4722
Fax: 630-851-5040
www.conwin.com

US Headquarters:
630-851-4722
European Headquarters:
+353-61-472221

Description

The Connor-Winfield 5.0x7.0mm Temperature Compensated Crystal Controlled Oscillators and Voltage Controlled

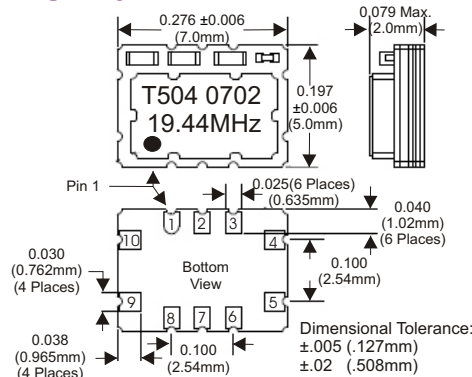


Temperature Compensated Crystal Controlled Oscillators are designed for use in S3 Telecom Applications. Through the use of Analog Temperature Compensation, this device is capable of holding sub 1-ppm stabilities over the commercial or the industrial temperature ranges. All models meet +/-4.6ppm accuracies for twenty years.

Applications

STRATUM 3 Applications
Timing Reference

Package Layout



Standard Frequencies Available *

6.4 MHz 9.72 MHz 10.0 MHz 10.24 MHz 12.5 MHz 12.8 MHz
13.5 MHz 19.44 MHz 20.0 MHz 20.48 MHz 25 MHz 27 MHz 38.88 MHz

* Available frequencies from the factory for small quantity orders or quick delivery. Additional frequencies are available.

Ordering Information



T	5	0	4	-	019.44M
Type: Precision TCXO VCTCXO 5x7mm	Temperature Range: 5 = 0 to 70° C 6 = -40 to 85° C	Frequency Stability: 0 = +/-0.28 ppm 1 = +/- 0.50 ppm 2 = +/- 1.00 ppm	Features: 2 = TCXO, LVCMOS, 3.3Vdc. 3 = TCXO, Clipped Sinewave, 3.3Vdc. 4 = VCTCXO, LVCMOS, 3.3Vdc. 5 = VCTCXO, Clipped Sinewave, 3.3Vdc.		Output Frequency: Frequency Format -xxx.xM Min.* -xxx.xxxxxM Max.* *Amount of numbers after the decimal point. M = MHz

Example:
T504-019.44M = 5x7mm, TCXO, LVCMOS,
3.3Vdc, 0 to 70C, +/-0.28ppm, Output Frequency 19.44MHz

To order an T504 with an output frequency of:
6.4 MHz = T504-006.4M
20 MHz = T504-020.0M
38.88 MHz = T504-038.88M

Features:

Miniature 5.0 x7.0mm Surface Mount Package
3.3V Operation
LVCMOS or Clipped Sinewave Output Logic
Frequency Stabilities Available:
T50x / T60x: +/-0.28ppm
T51x / T61x: +/-0.50ppm
T52x / T62x: +/-1.00ppm
Temperature Ranges Available:
T5xx Series: 0 to 70°C
T6xx Series: -40 to 85°C
Frequency Tolerance: +/-4.60ppm for 20 yrs.
Low Jitter <1pS RMS
Tri-State Enable/Disable
Tape and Reel Packaging
RoHS Compliant / Lead Free **RoHS**
Recommended for New Designs

Pin Connections

1	Do not connect
2	Do not connect
3	Do not connect
4	Ground
5	Output
6	Do not connect
7	Do not connect
8	Tri-state Enable / Disable
9	Supply, Vcc
10	Voltage Control (VCTCXO) N/C (TCXO)

Table 1.0

Bulletin	Tx176
Page	1 of 4
Revision	06
Date	30 Aug 2007

Absolute Maximum Ratings

Table 2.0

Parameter	Minimum	Nominal	Maximum	Units	Notes
Storage Temperature	-55	-	125	°C	
Supply Voltage (Vcc)	-0.5	-	6.0	Vdc	
Input Voltage (Vcc)	-0.5	-	Vcc+0.6	Vdc	

Model Specifications

Table 3.0
Notes

Model Number	T502	T503	T504	T505	Notes
Output Type	LVC MOS	Clipped Sinewave	LVC MOS	Clipped Sinewave	
TCXO / VCTCXO	TCXO	TCXO	VCTCXO	VCTCXO	
Frequency Range	6.4 to 40MHz	6.4 to 52 MHz	6.4 to 40 MHz	6.4 to 52 MHz	
Frequency Stability	±0.28ppm				1
Supply Voltage	3.3Vdc				
Temperature Range	0 to 70°C				
Holdover Stability	±0.32ppm				2

Table 4.0
Notes

Model Number	T602	T603	T604	T605	Notes
Output Type	LVC MOS	Clipped Sinewave	LVC MOS	Clipped Sinewave	
TCXO / VCTCXO	TCXO	TCXO	VCTCXO	VCTCXO	
Frequency Range	6.4 to 40MHz	6.4 to 52 MHz	6.4 to 40 MHz	6.4 to 52 MHz	
Frequency Stability	±0.28ppm				1
Supply Voltage	3.3Vdc				
Temperature Range	-40 to 85°C				
Holdover Stability	±0.32ppm				2

Table 5.0
Notes

Model Number	T512	T513	T514	T515	Notes
Output Type	LVC MOS	Clipped Sinewave	LVC MOS	Clipped Sinewave	
TCXO / VCTCXO	TCXO	TCXO	VCTCXO	VCTCXO	
Frequency Range	6.4 to 40MHz	6.4 to 52 MHz	6.4 to 40 MHz	6.4 to 52 MHz	
Frequency Stability	±0.50ppm				1
Supply Voltage	3.3Vdc				
Temperature Range	0 to 70°C				

Table 6.0
Notes

Model Number	T612	T613	T614	T615	Notes
Output Type	LVC MOS	Clipped Sinewave	LVC MOS	Clipped Sinewave	
TCXO / VCTCXO	TCXO	TCXO	VCTCXO	VCTCXO	
Frequency Range	6.4 to 40MHz	6.4 to 52 MHz	6.4 to 40 MHz	6.4 to 52 MHz	
Frequency Stability	±0.50ppm				1
Supply Voltage	3.3Vdc				
Temperature Range	-40 to 85°C				

Table 7.0
Notes

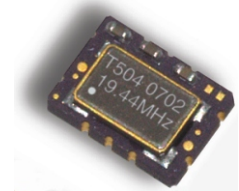
Model Number	T522	T523	T524	T525	Notes
Output Type	LVC MOS	Clipped Sinewave	LVC MOS	Clipped Sinewave	
TCXO / VCTCXO	TCXO	TCXO	VCTCXO	VCTCXO	
Frequency Range	6.4 to 52 MHz				
Frequency Stability	±1.00ppm				1
Supply Voltage	3.3Vdc				
Temperature Range	0 to 70°C				

Table 8.0
Notes

Model Number	T622	T623	T624	T625	Notes
Output Type	LVC MOS	Clipped Sinewave	LVC MOS	Clipped Sinewave	
TCXO / VCTCXO	TCXO	TCXO	VCTCXO	VCTCXO	
Frequency Range	6.4 to 52 MHz				
Frequency Stability	±1.00ppm				1
Supply Voltage	3.3Vdc				
Temperature Range	-40 to 85°C				

Notes:

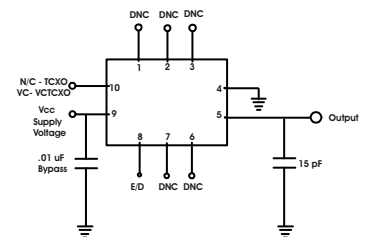
- 1) Frequency stability vs. change in temperature. $[\pm(F_{max} - F_{min})/2.F_0]$.
- 2) Inclusive of frequency stability, supply voltage change ($\pm 1\%$), aging, for 24 hours.



Features

TCXO
VCTCXO
3.3V Operation
LVC MOS Output
Clipped Sinewave Output
Frequency Stability:
T50x/T60x-Series ± 0.28 ppm
T51x/T61x-Series ± 0.50 ppm
T52x/T62x-Series ± 1.00 ppm
Temperature Range:
T5xx-Series 0 to 70°C
T6xx-Series -40 to 85°C
Low Jitter <1pS RMS
Tri-State Enable/Disable
Surface Mount Package
Tape and Reel Packing
RoHS Compliant / Lead Free

LVC MOS Test Circuit



US Headquarters:
630-851-4722
European Headquarters:
+353-61-472221

Bulletin	Tx176
Page	2 of 4
Revision	06
Date	30 Aug 2007

Electrical Specifications for all Models

OPERATING SPECIFICATIONS

Table 9.0

PARAMETER		MINIMUM	NOMINAL	MAXIMUM	UNITS	Notes
TCXO Frequency Calibration @ 25°C		-1.00	-	1.00	ppm	1
Total Frequency Tolerance		-4.60	-	4.60	ppm	2
Supply Voltage	(Vcc)	3.135	3.3	3.465	Vdc	3
Supply Current	(Icc)	-	6	10	mA	
Jitter (BW=10Hz to 20MHz)		-	-	5	ps rms	
Jitter (BW=12kHz to 20MHz)		-	-	1	ps rms	
SSB Phase Noise at 10Hz offset		-	-80	-70	dBc/Hz	
SSB Phase Noise at 100Hz offset		-	-110	-100	dBc/Hz	
SSB Phase Noise at 1KHz offset		-	-135	-130	dBc/Hz	
SSB Phase Noise at >10KHz offset		-	-150	-145	dBc/Hz	
SSB Phase Noise at >100KHz offset		-	-150	-150	dBc/Hz	
Start Up Time		-	-	10	ms	

INPUT CHARACTERISTICS for ENABLE / DISABLE FUNCTION (Pin 8)

Table 10.0

PARAMETER		MINIMUM	NOMINAL	MAXIMUM	UNITS	Notes
Enable Voltage (High) or open circuit	(Vih)	70% Vdd	-	-	Vdc	4
Disable Voltage (Low) Output Tri-stated	(Vil)	-	-	30% Vdd	Vdc	

INPUT CHARACTERISTICS for VOLTAGE CONTROL (Pin10)

Table 11.0

PARAMETER		MINIMUM	NOMINAL	MAXIMUM	UNITS	Notes
Control Voltage Range (Vcc = 3.3V)	(Vc)	0.3	1.65	3.0	Vdc	
Frequency Tuning		±10	-	-	ppm	5
Linearity		±5	-	-	%	
Slope		Positive				

LVC MOS OUTPUT CHARACTERISTICS

Table 12.0

PARAMETER		MINIMUM	NOMINAL	MAXIMUM	UNITS	Notes
LOAD		-	-	15	pF	
Voltage (High)	(Voh)	90%Vcc	-	-	Vdc	
(Low)	(Vol)	-	-	10%Vcc	Vdc	
Current (High)	(Ioh)	-4	-	-	mA	
(Low)	(Iol)	-	-	4	mA	
Duty Cycle at 50% of Vcc		45	50	55	%	
Rise / Fall Time 10% to 90%		-	-	8	ns	

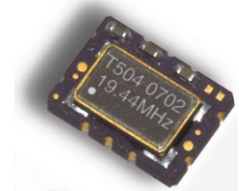
CLIPPED SINEWAVE OUTPUT CHARACTERISTICS

Table 13.0

PARAMETER		MINIMUM	NOMINAL	MAXIMUM	UNITS	Notes
Load		-	10K? //10pF	-		6
Output Voltage (<= 40 MHz)		1.00	-	-	V pk-pk	
Output Voltage (> 40 MHz)		0.80	-	-	V pk-pk	

Notes:

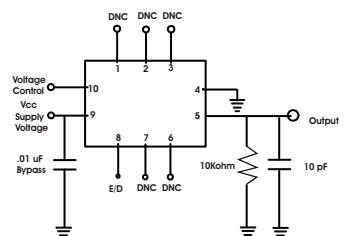
- 1) TCXO: Initial calibration @ 25°C. Specifications at time of shipment after 48 hours of operation.
- 2) Inclusive of calibration @ 25°C, frequency vs. change in temperature, change in supply voltage (±5%), load change (±5%), reflow soldering process and 20 years aging.
- 3) For best in application performance, careful selection of an external power source is critical. Select an external regulator that meets or exceeds to following specifications regarding voltage regulation tolerance, initial accuracy, temperature coefficient, voltage noise, and low voltage noise density.
Factory Test Conditions: Initial Accuracy ±2mv, Noise (0.1Hz to 10 KHz) 15uV p-p, Voltage Noise Density = 50nV/sqrt Hz, Temperature Coefficient < 5ppm°C.
- 4) Leave Pad 8 unconnected if enable / disable function is not required. When tri-stated, the output stage is disabled but the oscillator and compensation circuit are still active (current consumption ≤ 1 mA).
- 5) Additional pull ranges are available; please contact the factory for additional information.
- 6) Output is AC coupled.



Features

TCXO
 VCTCXO
 3.3V Operation
 LVCMOS Output
 Clipped Sinewave Output
 Frequency Stability:
 T50x/T60xSeries +/-0.28ppm
 T51x/T61x-Series +/-0.50ppm
 T52x/T62x-Series +/-1.00ppm
 Temperature Range:
 T5xx-Series 0 to 70°C
 T6xx-Series -40 to 85°C
 Low Jitter <1pS RMS
 Tri-State Enable/Disable
 Surface Mount Package
 Tape and Reel Packing
 RoHS Compliant / Lead Free

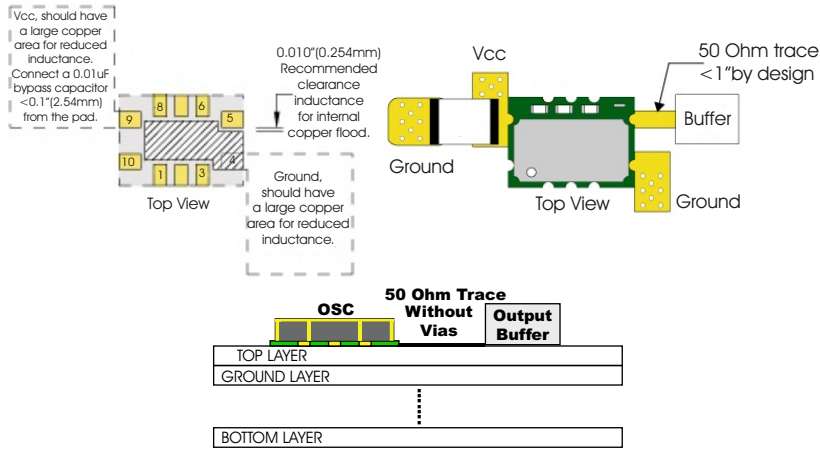
Clipped Sinewave Test Circuit



US Headquarters:
 630-851-4722
 European Headquarters:
 +353-61-472221

Bulletin	Tx176
Page	3 of 4
Revision	06
Date	30 Aug 2007

Design Recommendations



Package Characteristics

Table 14.0

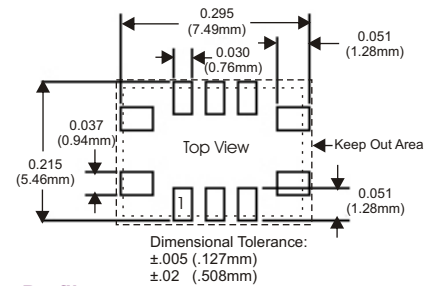
Package	Ceramic Surface Mount Package.
---------	--------------------------------

Environmental Characteristics

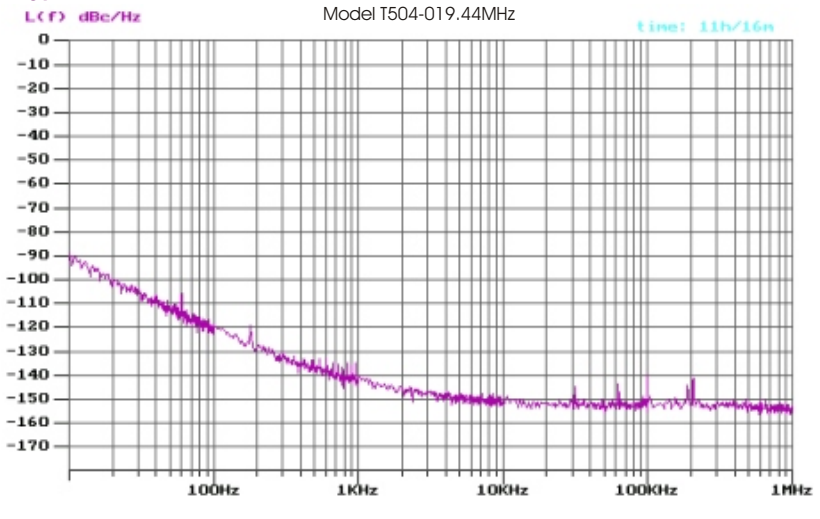
Table 15.0

Vibration:	Vibration per Mil Std 883E Method 2007.3 Test Condition A
Shock:	Mechanical Shock per Mil Std 883E Method 2002.4 Test Condition B.
Soldering:	SMD product suitable for Convection Reflow soldering. Peak temperature 260°C. Maximum time above 220°C, 60 seconds.
Solderability	Solderability per Mil Std 883E Method 2003

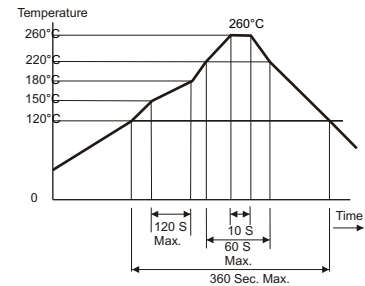
Suggested Pad Layout



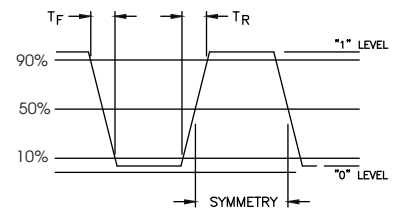
Typical Phase Noise



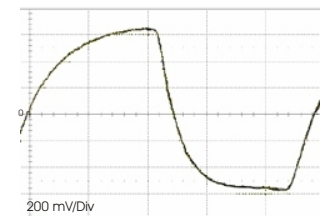
Solder Profile



LVC MOS Output Waveform



Clipped Sinewave Output Waveform



US Headquarters:

630-851-4722

European Headquarters:

+353-61-472211

Bulletin Tx176

Page 4 of 4

Revision 06

Date 30 Aug 2007

Tape and Reel Specifications

MEETS EIA-481A AND EIAJ-1009B
2000 PCS/REEL MAXIMUM

