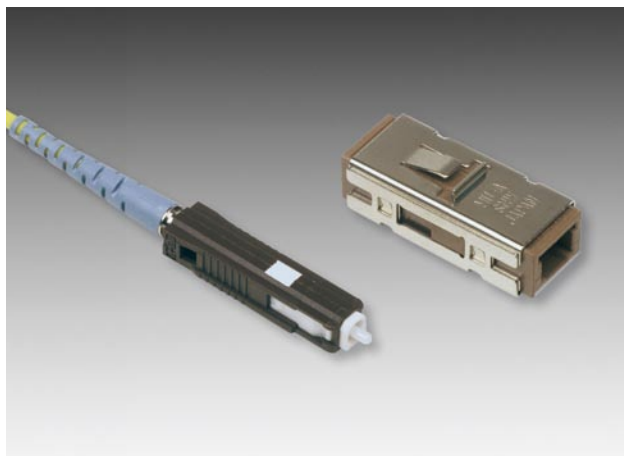




MU

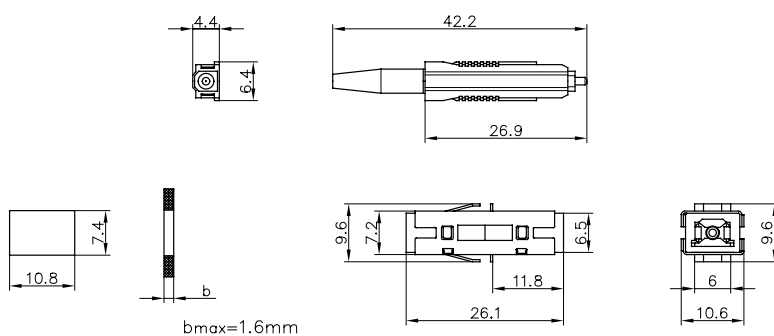


Features

- push-pull connector
- small form factor connector for high packing density. Two connections in SC shape adapter

Specifications

compliance	IEC 61754-6
technology	full ceramic ferrule (1.25 mm) and sleeve
tuning	in 90° steps
mechanical resistance	70 N tensile load
operating temperature	-40 °C to +85 °C
flammability	UL 94-V0
durability	min. 1000 mating cycles
colour of housing	singlemode PC brown multimode brown



Ordering information: MU connector including crimpset

Connector type	Polishing	Insertion loss [dB] (mean/97%)	Cable Ø	Type
E9/125	PC	0.12/0.25 ¹⁾	< 1.0 mm	FMU-Z/K-A001 ²⁾
E9/125	PC	0.12/0.25 ¹⁾	2.0 mm	FMU-Z/K-A002 ²⁾

1) IEC 61300-3-34 method 2

2) including crimpset

Ordering information: adapter

Adapter type	Mounting	Sleeve material	Type
SM	with integrated latch mechanism	ceramic	FMU-FMU-A001-01