

Category 5 Premise Wiring Products

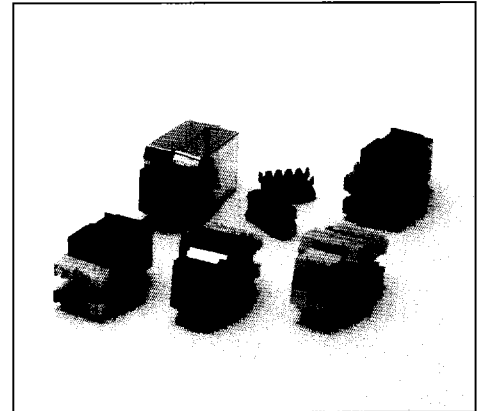
UL
TSB40A

A. Category 5 — RJ45 Jack-Module

RJ45 jack with 110 IDC termination, accepts 22-24AWG solid wire. Designed for high-speed data requirements. UL Category 5 certified, meets EIA/TIA-568A or B and TSB40A specifications. No wire pre-stripping required. Shielded and unshielded versions. Jacks snap into modular wall plates LZR #KFP below and modular blank patch panels LZR #BPP on page 9, item F.

Part No.	Description
CVJU-A-XX	Category 5 RJ45 jack, Mod., 568A, 8C, unshielded, 110
CVJS-A-XX	Category 5 RJ45 jack, Mod., 568A, 8C, shielded, 110
CVJU-B-XX	Category 5 RJ45 jack, Mod., 568B, 8C, unshielded, 110
CVJS-B-XX	Category 5 RJ45 jack, Mod., 568B, 8C, shielded, 110

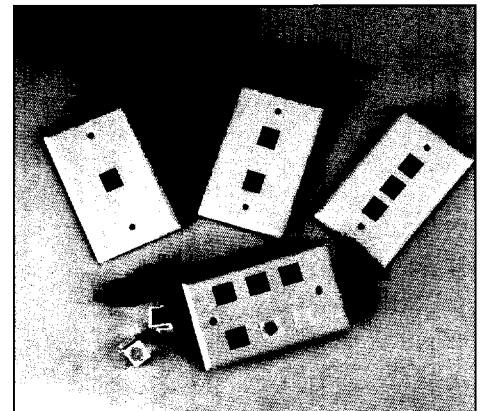
XX = Color: RD-red, IV-ivory, BL-blue, GN-green, BK-black, YL-yellow



B. Face Plates for Module Category 5 Jacks and Inserts

Single gang face plates for Category 5 module type jacks and other module type inserts. Fits standard type electrical outlet box or LZR's standard mounting box LZR# KMBSD or KMBDP on page 13, item G. Available in ivory color only. No bezels required.

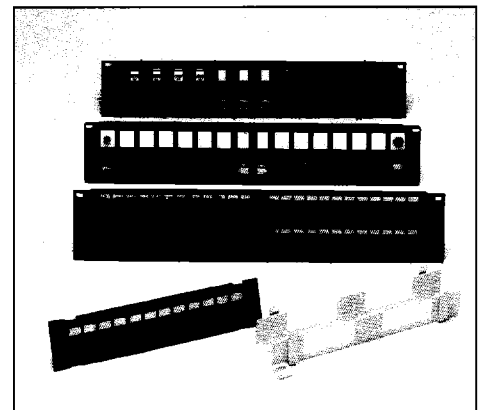
Part No.	Description
KFP-1IV	Single port module face plate, ivory
KFP-2IV	2 port module face plate, ivory
KFP-3IV	3 port module face plate, ivory
KFP-4IV	4 port module face plate, ivory
KFP-6IV	6 port module face plate, ivory



C. Category 5 Patch Panels / Printed Circuit Board Type

Category 5 printed circuit board patch panels, designed for high speed applications (100 MBPS). EIA/TIA 568A or B, TSB 40A certified. PC board with 110 type termination. RJ45 jacks, 8 conductors, 50μ of gold and station identification tabs on front panel. Standard 19" panel design. Black only. See Blank Patch Panels on page 9, item F.

Part No.	Description
CVPP12-A	Cat 5 patch panel, 12 port, PCB, RJ45, 8C, 568A, 110
CVPP12-B	Cat 5 patch panel, 12 port, PCB, RJ45, 8C, 568B, 110
CVPP24-A	Cat 5 patch panel, 24 port, PCB, RJ45, 8C, 568A, 110
CVPP24-B	Cat 5 patch panel, 24 port, PCB, RJ45, 8C, 568B, 110
CVPP48-A	Cat 5 patch panel, 48 port, PCB, RJ45, 8C, 568A, 110
CVPP48-B	Cat 5 patch panel, 48 port, PCB, RJ45, 8C, 568B, 110
CVPP96-A	Cat 5 patch panel, 96 port, PCB, RJ45, 8C, 568A, 110
CVPP96-B	Cat 5 patch panel, 96 port, PCB, RJ45, 8C, 568B, 110

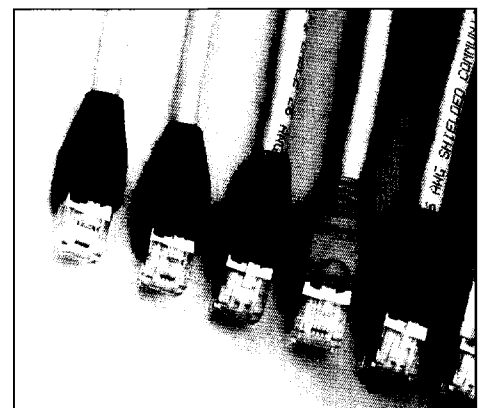


D. Patch Cords — Category 5

Category 5 patch cords with RJ45 modular connectors, 8 conductors, 50μ of gold, UL, 4 pair, 24AWG, PVC jacket, EIA/TIA 568A or B. Custom lengths available. Shielded or unshielded.

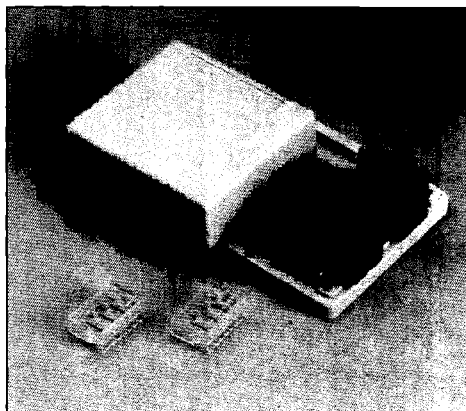
Part No.	Description	Part No.	Description
5PCS3A	Cat.5 P. cord, 3', 568A, shd.	5PCS7B	Cat.5 P. cord, 7', 568B, shd.
5PCU3A	Cat.5 P. cord, 3', 568A, unshd.	5PCU7B	Cat.5 P. cord, 7', 568B, unshd.
5PCS3B	Cat.5 P. cord, 3', 568B, shd.	5PCS14A	Cat.5 P. cord, 14', 568A, shd.
5PCU3B	Cat.5 P. cord, 3', 568B, unshd.	5PCU14A	Cat.5 P. cord, 14', 568A, unshd.
5PCS7A	Cat.5 P. cord, 7', 568A, shd.	5PCS14B	Cat.5 P. cord, 14', 568B, shd.
5PCU7A	Cat.5 P. cord, 7', 568A, unshd.	5PCU14B	Cat.5 P. cord, 14', 568B, unshd.

Color: Gray



Category 5 Premise Wiring Products

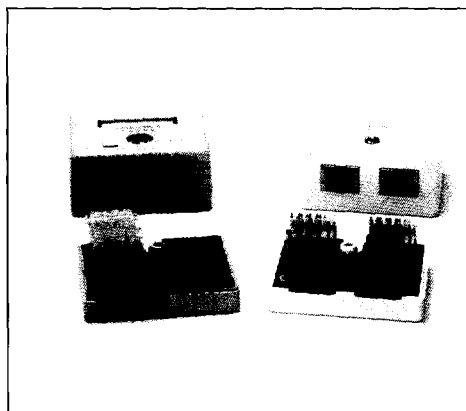
UL
TSB40A



E. Blank Surface Mount Box — Module — Unloaded

Designed to accept LZR's module keystone type Category 5 jacks and other RJ45 module type insert jacks for data and voice. Double sided tape included. Available in single and duplex. Snap on type plastic cover. Makes those hard to wire areas an easy install.

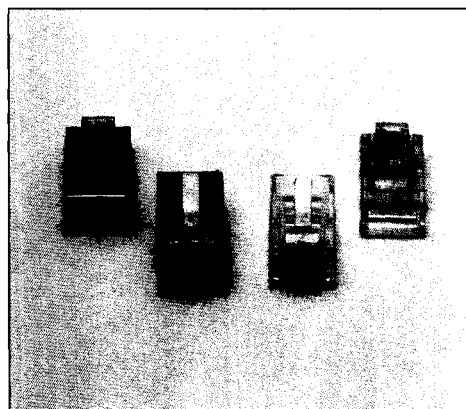
Part No.	Description
BSMB1	Single port, ivory
BSMB2	2 ports, duplex, ivory



F. Category 5 - Surface Mount Box With Printed Circuit Board

"New" Category 5 PCB Surface Mount Jack with 110 IDC, RJ45, 8C, allows for a quick and easy install. UL certified to meet EIA/TIA 568A or B, TSB 40A specifications. Built in station ID strips. Single and duplex. Shielded and unshielded versions available.

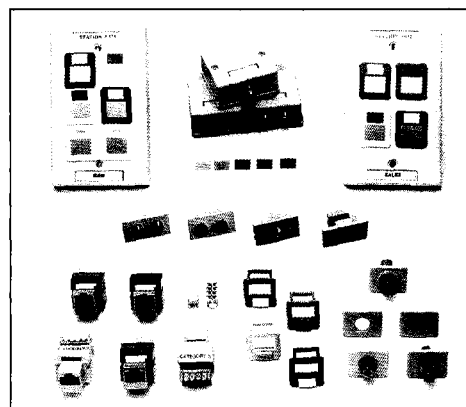
Part No.	Description
CVSMJS1-A	Cat.5 SMB, single, shielded, 568A, PCB, ivory
CVSMJU1-A	Cat.5 SMB, single, unshielded, 568A, PCB, ivory
CVSMJS2-A	Cat.5 SMB, duplex, shielded, 568A, PCB, ivory
CVSMJU2-A	Cat.5 SMB, duplex, unshielded, 568A, PCB, ivory
CVSMJS1-B	Cat.5 SMB, single, shielded, 568B, PCB, ivory
CVSMJU1-B	Cat.5 SMB, single, unshielded, 568B, PCB, ivory
CVSMJS2-B	Cat.5 SMB, duplex, shielded, 568A, PCB, ivory
CVSMJU2-B	Cat.5 SMB, duplex, unshielded, 568A, PCB, ivory



G. Category 5 Modular Plugs — RJ45, 50μ

All modular plug contacts have 50μ of gold plating, compliant to FCC part 68, subpart F requirements. The 8P8C RJ45 plug is available for round and flat cable applications, stranded and solid wire terminations. The plugs have an oval cable opening which allows both round and flat cable entry. Shielded and unshielded available.

Part No.	Description
CVPST-U	Category 5, RJ45, 8C, solid, unshielded.
CVPST-S	Category 5, RJ45, 8C, Stranded, unshielded.
CVPST-S	Category 5, RJ45, 8C, solid, shielded.
CVPST-S	Category 5, RJ45, 8C, stranded, shielded.



H. Color Coded Outlet System (COS 100)

This unique multi-media color coded outlet system is designed for ease of installation and complete outlet management of your network or system. Color modules snap into place and are easily removed when needed. See our COS 100 system on inside front cover for more product information and ordering.

COS 100 System

- Face Plates — module
- Surface Mount Box — module
- Colored Bezels — module
- Category 5 Jacks — module
- BNC, Fiber and "F" type connector inserts — module
- Color coded plastic icons and ID plastic strips