

10/100 BASE-T SINGLE PORT SURFACE MOUNT MAGNETICS

- Meets IEEE 802.3af & ANSI X 3.263
- Surface mount, open header construction
- Many parts are PoE enabled
- Standard operating temp: 0°C to +70°C (see footnote)
- Industrial operating temp: -40°C to +85°C (see footnote)



Electrical Specifications @25°C

Part Number	OCL(uH Min) @100KHz,0.2V With 8mA DC Bias	Turns Ratio (±3%)	Insertion Loss (dB Max) 0.5-100MHz	Return Loss (dB Min)			Cross talk (dB Min)		CMMRR (dB Min) 0.5-100MHz	HI-POT (Vrms)
				0.5-30MHz	30.1-60MHz	60.1-80MHz	0.5-40MHz	40.1-100MHz		
AH1601C__	350	1CT:1CT	1.1	18	18-20*log(f/30)	12	35	33-20*log(f/50)	30	1500
AH1602C__	350	1CT:1CT	1.1	18	18-20*log(f/30)	12	35	33-20*log(f/50)	30	1500
AH1603C__	350	1CT:1CT	1.1	18	18-20*log(f/30)	12	35	33-20*log(f/50)	30	1500
AH1604C__	350	1CT:1CT	1.1	18	18-20*log(f/30)	12	35	33-20*log(f/50)	30	1500
AH1605C__	350	1CT:1CT	1.1	18	18-20*log(f/30)	12	35	33-20*log(f/50)	30	1500
AH1606C__	350	1CT:1CT	1.1	18	18-20*log(f/30)	12	35	33-20*log(f/50)	30	1500
AH1607C__	350	1CT:1CT	1.1	18	18-20*log(f/30)	12	35	33-20*log(f/50)	30	1500
AH1608C__	350	1CT:1CT	1.1	18	18-20*log(f/30)	12	35	33-20*log(f/50)	30	1500
AH1609C__	350	1CT:1CT	1.1	18	18-20*log(f/30)	12	35	33-20*log(f/50)	30	1500
AH1611C__	350	1CT:1CT	1.1	18	18-20*log(f/30)	12	35	33-20*log(f/50)	30	1500
AH1612C__	350	1CT:1CT	1.1	18	18-20*log(f/30)	12	35	33-20*log(f/50)	30	1500
AH1615C__	350	1CT:1CT	1.1	18	18-20*log(f/30)	12	35	33-20*log(f/50)	30	1500
AH1616C__	350	1CT:1CT	1.1	18	18-20*log(f/30)	12	35	33-20*log(f/50)	30	1500
AH1617C__	350	1CT:1CT	1.1	18	18-20*log(f/30)	12	35	33-20*log(f/50)	30	1500
AH1618C__	350	1CT:1CT	1.1	18	18-20*log(f/30)	12	35	33-20*log(f/50)	30	1500
AH1620C__	350	1CT:1CT	1.1	18	18-20*log(f/30)	12	35	33-20*log(f/50)	30	1500
AH1621C__	350	1CT:1CT	1.1	18	18-20*log(f/30)	12	35	33-20*log(f/50)	30	1500
AH1622C__	350	1CT:1CT	1.1	18	18-20*log(f/30)	12	35	33-20*log(f/50)	30	1500
AH1624C__	350	1CT:1CT	1.1	18	18-20*log(f/30)	12	35	33-20*log(f/50)	30	1500
AH1625C__	350	1CT:1CT	1.1	18	18-20*log(f/30)	12	35	33-20*log(f/50)	30	1500
AH1626C__	350	1CT:1CT	1.1	18	18-20*log(f/30)	12	35	33-20*log(f/50)	30	1500
AH1629C__	350	1CT:1CT	1.1	18	18-20*log(f/30)	12	35	33-20*log(f/50)	30	1500
AH1630C__	350	1CT:1CT	1.1	18	18-20*log(f/30)	12	35	33-20*log(f/50)	30	1500
AH1631C__	350	1CT:1CT	1.1	18	18-20*log(f/30)	12	35	33-20*log(f/50)	30	1500
AH1632C__	350	1CT:1CT	1.1	18	18-20*log(f/30)	12	35	33-20*log(f/50)	30	1500
AH1633C__	350	1CT:1CT	1.1	18	18-20*log(f/30)	12	35	33-20*log(f/50)	30	1500
AH1634C__	350	1CT:1CT	1.1	18	18-20*log(f/30)	12	35	33-20*log(f/50)	30	1500
AH1635C__	350	1CT:1CT	1.1	18	18-20*log(f/30)	12	35	33-20*log(f/50)	30	1500
AH1636C__	350	1CT:1CT	1.1	18	18-20*log(f/30)	12	35	33-20*log(f/50)	30	1500
AH1637C__	350	1CT:1CT	1.1	18	18-20*log(f/30)	12	35	33-20*log(f/50)	30	1500
AH1638C__	350	1CT:1CT	1.1	18	18-20*log(f/30)	12	35	33-20*log(f/50)	30	1500
AH1639C__	350	1CT:1CT	1.1	18	18-20*log(f/30)	12	35	33-20*log(f/50)	30	1500
AH1640C__	350	1CT:1CT	1.1	18	18-20*log(f/30)	12	35	33-20*log(f/50)	30	1500
AH1641C__	350	1CT:1CT	1.1	18	18-20*log(f/30)	12	35	33-20*log(f/50)	30	1500
AH1642C__	350	1CT:1CT	1.1	18	18-20*log(f/30)	12	35	33-20*log(f/50)	30	1500
AH1646C__	350	1CT:1CT	1.1	18	18-20*log(f/30)	12	35	33-20*log(f/50)	30	1500
AH1648C__	350	1CT:1CT	1.1	18	18-20*log(f/30)	12	35	33-20*log(f/50)	30	1500
AH1649C__	350	1CT:1CT	1.1	18	18-20*log(f/30)	12	35	33-20*log(f/50)	30	1500
AH1650C__	350	1CT:1CT	1.1	18	18-20*log(f/30)	12	35	33-20*log(f/50)	30	1500
AH1651C__	350	1CT:1CT	1.1	18	18-20*log(f/30)	12	35	33-20*log(f/50)	30	1500
AH1654C__	350	1CT:1CT	1.1	18	18-20*log(f/30)	12	35	33-20*log(f/50)	30	1500
AH1655C__	350	1CT:1CT	1.1	18	18-20*log(f/30)	12	35	33-20*log(f/50)	30	1500

*Complete part number by inserting "S" for Standard Temp or "I" for Industrial Temp.

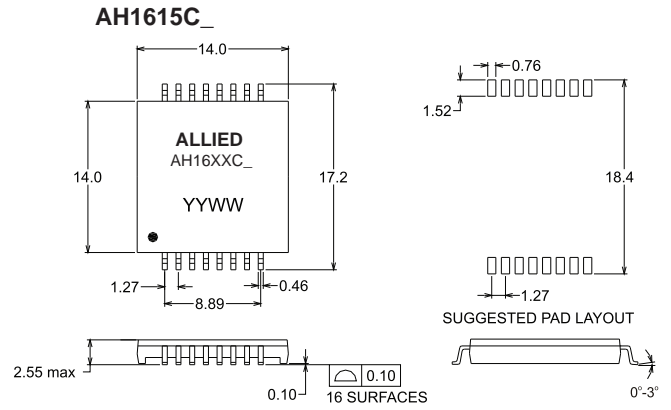
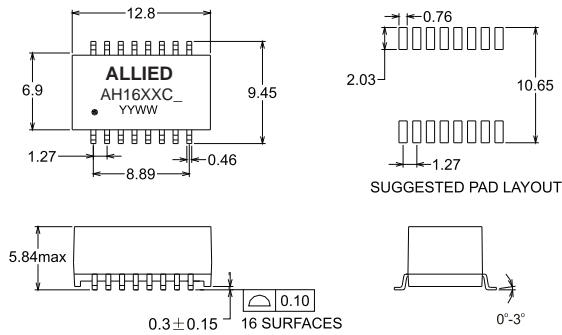
All specifications subject to change without notice.



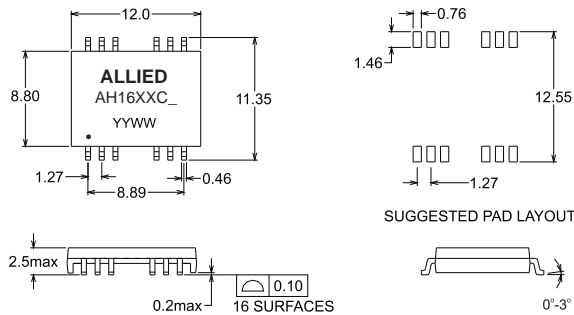
10/100 BASE-T SINGLE PORT SURFACE MOUNT MAGNETICS

MECHANICAL

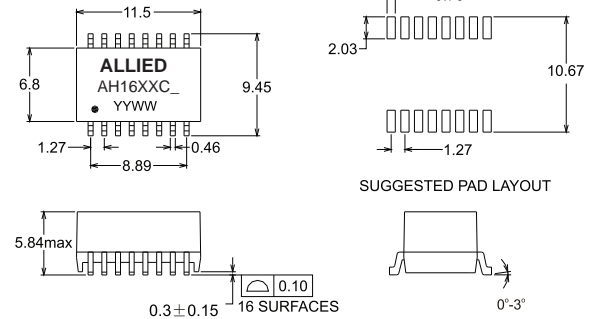
AH1601C_, AH1602C_, AH1603C_, AH1604C_
 AH1605C_, AH1606C_, AH1607C_, AH1608C_
 AH1609C_, AH1611C_, AH1612C_, AH1616C_
 AH1617C_, AH1618C_, AH1622C_, AH1629C_
 AH1632C_, AH1633C_, AH1638C_, AH1640C_
 AH1641C_, AH1646C_, AH1648C_, AH1650C_
 AH1654C_



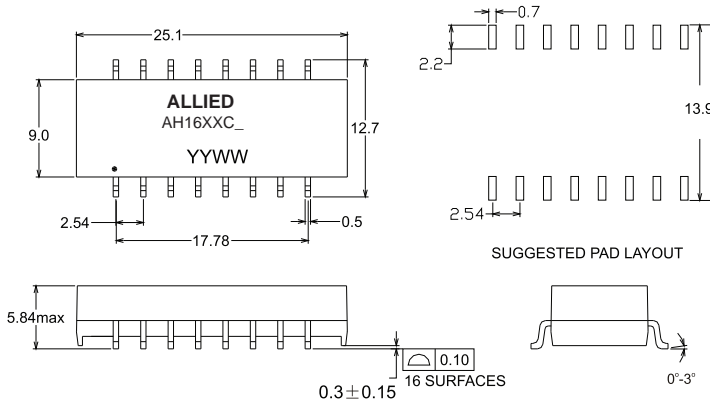
AH1620C_, AH1642C_



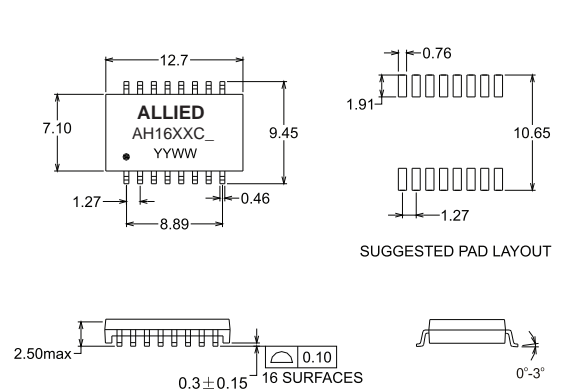
AH1621C_, AH1630C_



AH1624C_, AH1625C_, AH1626C_, AH1636C_



AH1631C_, AH1634C_, AH1635C_, AH1637C_
 AH1639C_, AH1649C_, AH1651C_, AH1655C_



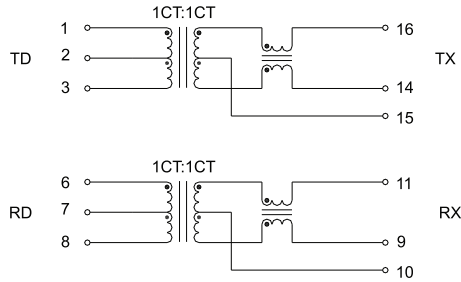
Unless otherwise specified all tolerances are: ±0.25 in mm



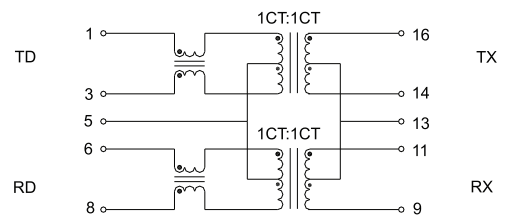
10/100 BASE-T SINGLE PORT SURFACE MOUNT MAGNETICS

SCHEMATICS

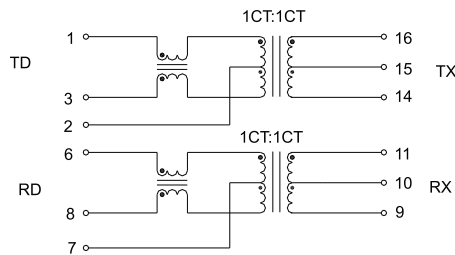
AH1601C_, AH1612C_, AH1651C_, AH1638C_



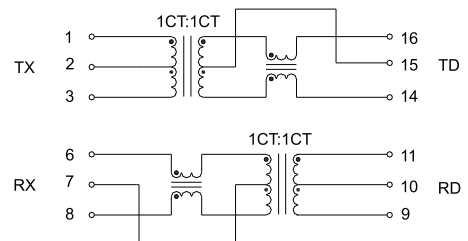
AH1602C_, AH1604C_, AH1638C_



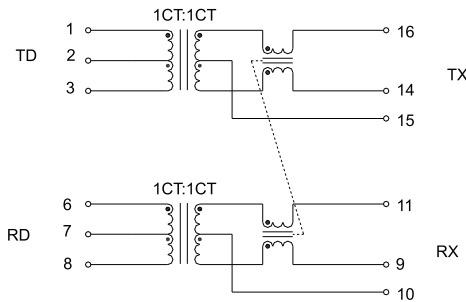
AH1603C_, AH1608C_, AH1630C_



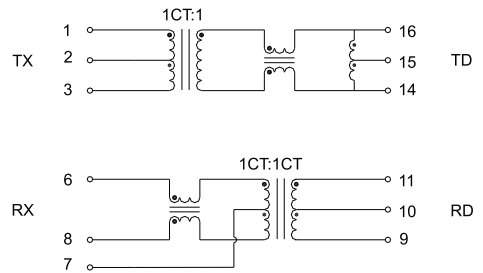
AH1605C_



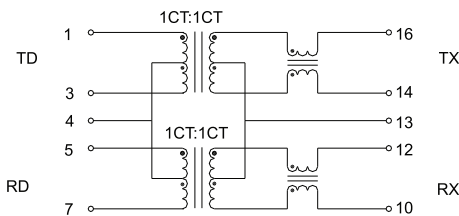
AH1606C_



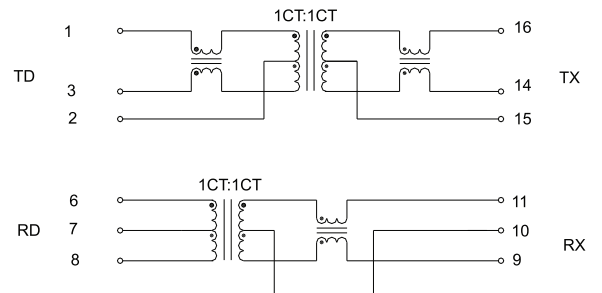
AH1607C_



AH1609C_



AH1611C_

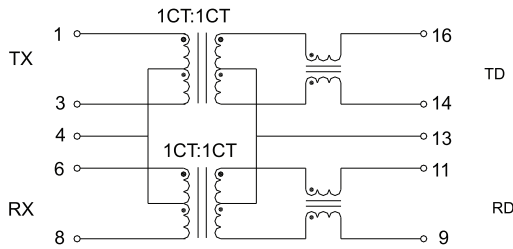




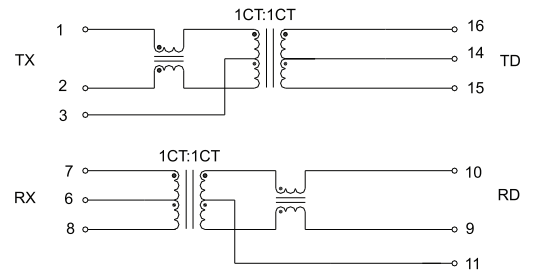
10/100 BASE-T SINGLE PORT SURFACE MOUNT MAGNETICS

SCHEMATICS

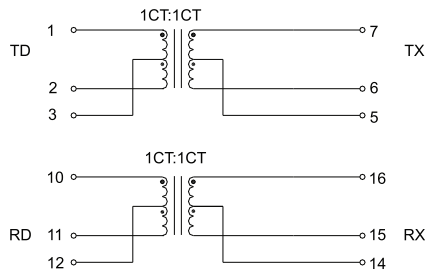
AH1612C_



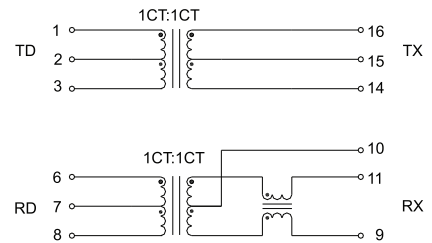
AH1615C_, AH1634C_, AH1635C_
AH1637C_, AH1649C_



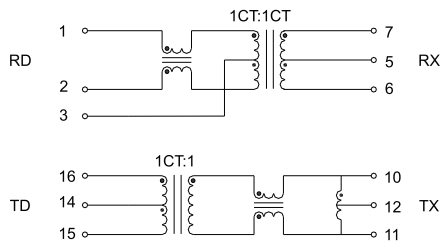
AH1616C_



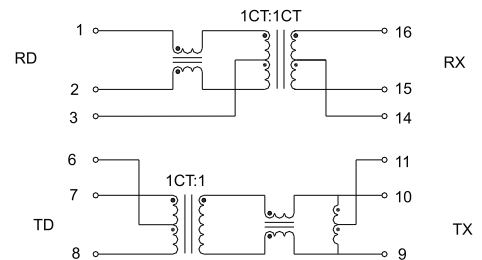
AH1617C_



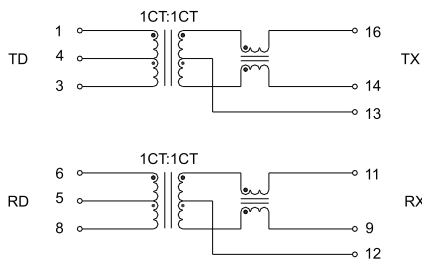
AH1618C_



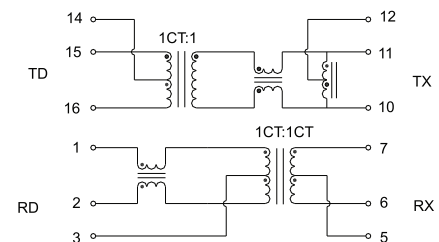
AH1620C_, AH1642C_



AH1622C_, AH1641C_



AH1624C_, AH1625C_, AH1636C_

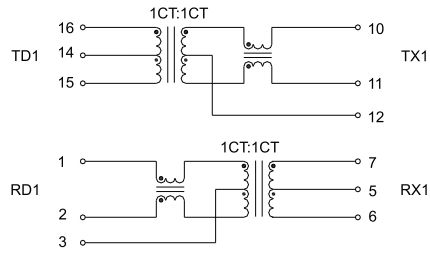




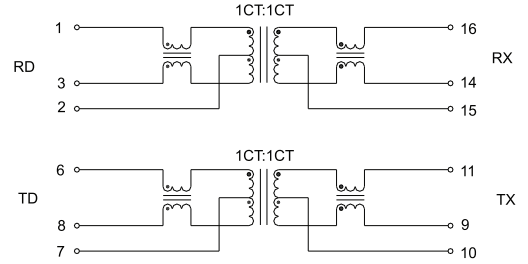
10/100 BASE-T SINGLE PORT SURFACE MOUNT MAGNETICS

SCHEMATICS

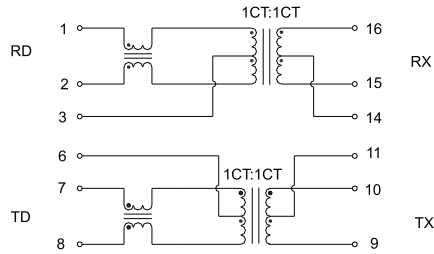
AH1626C_



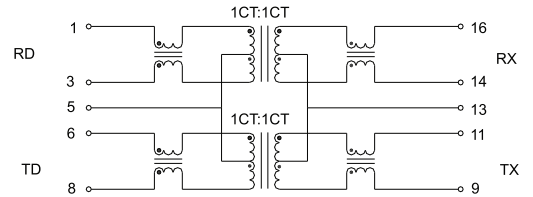
AH1629C_, AH1632C_



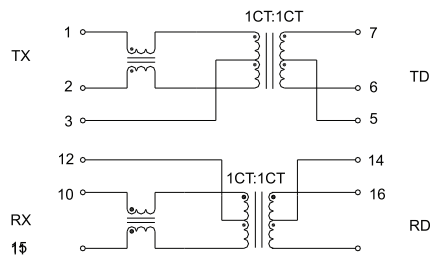
AH1631C_



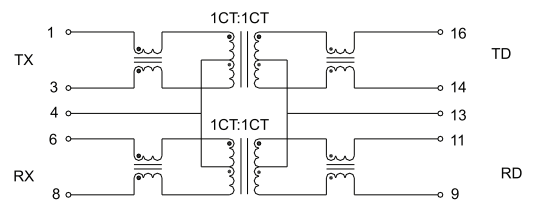
AH1633C_



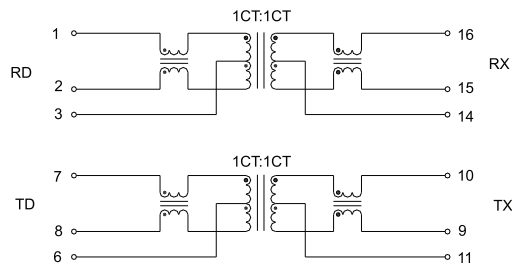
AH1640C_



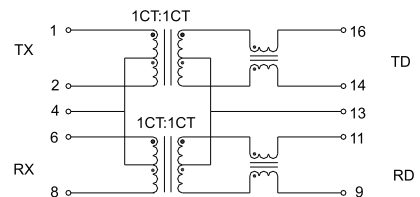
AH1646C_



AH1648C_



AH1650C_

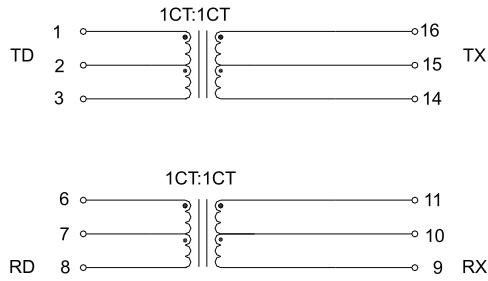




10/100 BASE-T SINGLE PORT SURFACE MOUNT MAGNETICS

SCHEMATICS

AH1654C_



AH1637C_, AH1655C_

