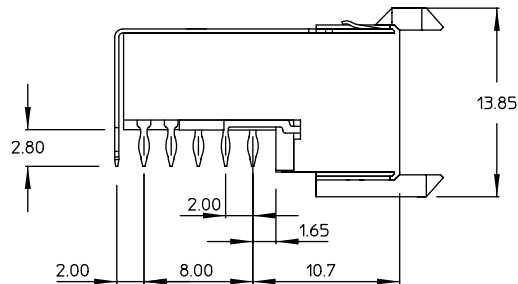
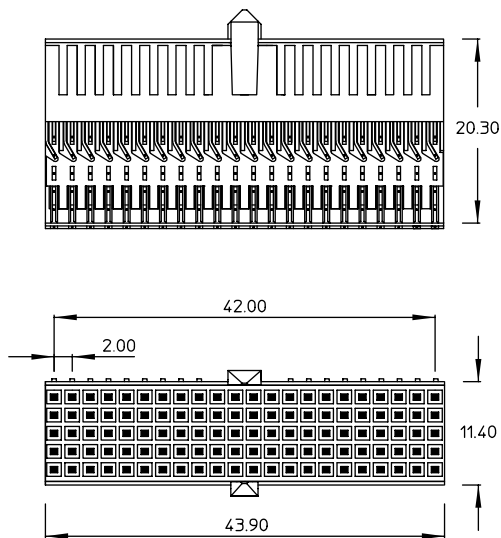
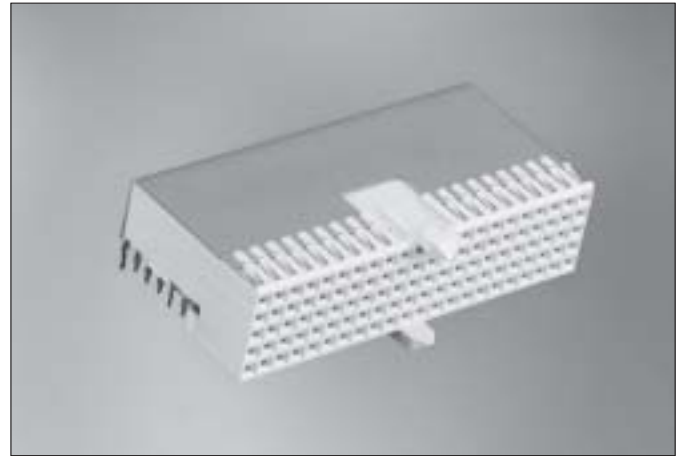


# Millipacs® HM

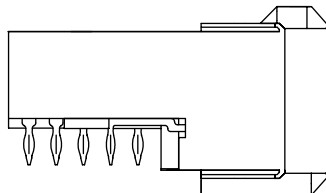
## 5+2 Row female signal right angle press-fit-to-board connector : TYPE AB22

### Description

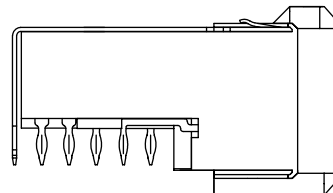
- 5 or 5+2 Row female right angle connector with 110 signal contacts.
- Integrated polarization and guiding center without loss of signal contact positions.
- Press - fit terminations.
- Non - shielded and shielded versions.
- Customized loading arrangements on request.
- Additional lower shield : see page 47.
- Board lay-out : see page 80.
- Module also used in CompactPCI; see CompactPCI catalog.



Standard product offer :



HM2R66PA5100N9  
(non shielded)



HM2R66PA5108N9  
(top shielded only, 4 mm pitch)