

MOLDED CABLE ASSEMBLIES With Phono Plugs and Phono Extension Jacks

SPECIFICATIONS

PLUG

- Tip (prong):** Nickel-plated, copper alloy.
- Sleeve Connection:** Plated copper alloy.
- Insulation:** Rigid plastic or thermoplastic.
- Molded Handle:** Thermoplastic.
- Standard Colors:** Gray, black, brown, red, white, tan, or blue. Other colors available on special order.

EXTENSION JACK

- Tip Spring:** Nickel-plated, hardened copper alloy.
- Sleeve Connection:** Plated steel.
- Insulation:** Rigid plastic.
- Molded Handle (both Plug and Jack):** Plastic.
- Standard Colors :** Gray, white, black and brown.
- Other colors available on special order.*

CABLE

- RA35, ST35, ST40, ST60:**
Standard Shielded Cable—Type W-1000-1.
Standard Parallel Cable (lamp cord)—Type W-1033-1.
- RA40, RA41:**
Standard Shielded Cable—Type W-1000-1 and W-1032-1.
Standard Unshielded (Parallel) Cable—Type W-1041-1.

NOTE: See Standard Cable Chart on page 251 for details. Order by part number from guide on page 250.

Special Cable: We will build assemblies on cable furnished by you (maximum diameter varies for types RA35, ST35, ST40) up to .20 inch (5.08 mm) outside diameter for RA40 and RA41 or on cable we purchase to your specifications. Jacket must have a temperature rating of 60 C minimum.

◊**RA35:** Right-angle phono plug with body extension for recessed jack. Cable: .188 inch (4.78 mm) outside diameter maximum. Completely shielded. (Available on special order only.)

ST35: Straight phono plug with "finger grip" handle. Handle .438 inch (11.13 mm) outside diameter. Completely shielded.

ST40: Straight phono plug, similar to ST35, except with longer handle.

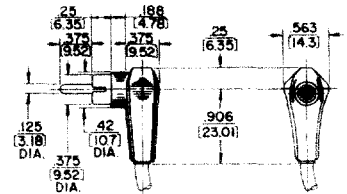
ST60: Straight extension jack with "finger grip" handle. Handle .438 inch (11.13 mm) outside diameter. Completely shielded.

RA40: Compact right-angle phono plug with low profile, high quality insulation, and short .281 inch (7.14 mm) molded handle for audio and RF connections where space is at a minimum.

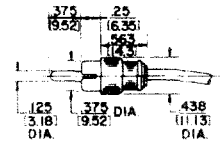
RA41: Same as RA40, except the handle is .531 inch (13.49 mm) long.



◊**RA-35**
Termination Code: Special Order



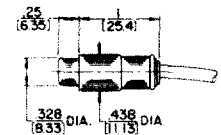
ST-35
Termination Code: 25



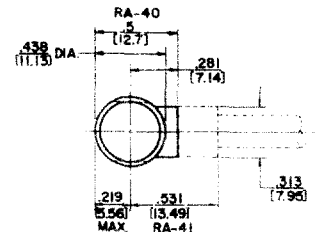
ST-40
Termination Code: 26



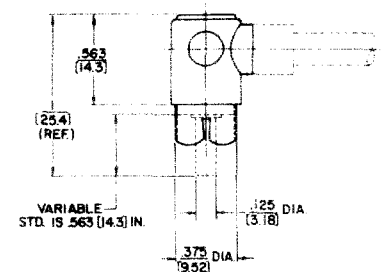
ST-60
Termination Code: 82



RA-40 (short handle)
Termination Code: 29



RA-41 (long handle)
Termination Code: 31



DESIGN FEATURES

- Can be specified with phenolic, nylon, glass-filled Teflon or polypropylene internal insulators. Polypropylene is recommended for RF connecting applications.
- Applications include stereo, PA and intercoms, audio-visual and telecommunications, including RF connections in 2-way radio and paging systems.

DIMENSIONS ARE FOR REFERENCE ONLY $\frac{\text{inch}}{(\text{mm})}$

NOTE: Contact your Switchcraft Representative for price and delivery.