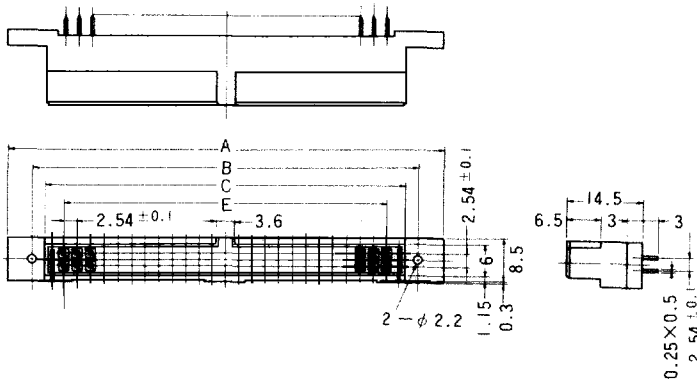


SOLDER DIP FEMALE TYPE FOR PC-BOARD

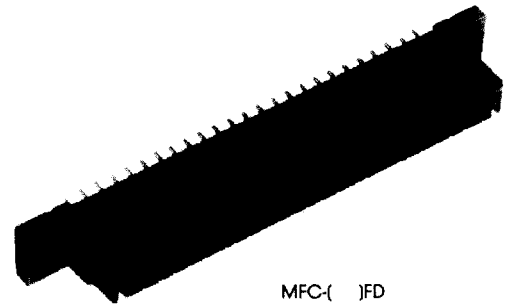
Features

- Simple connector designed for board-to-board connection without wire.
- The right-angle type corresponds to the locking mechanism.

MFC-()FD



Applicable connectors
MFC-()JPM
MFC-()LPM

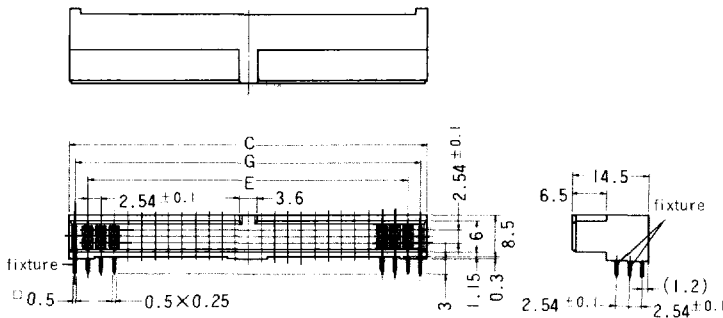


MFC-()FD

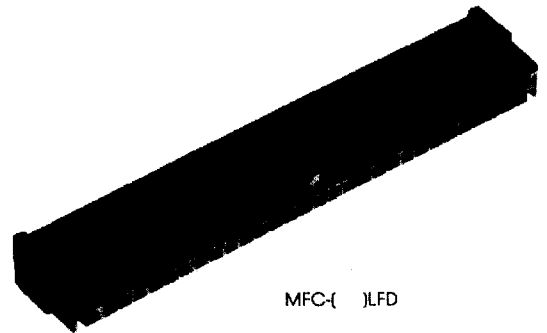
Part No.	A	B	C	E
* MFC-10FD	30.2	22.86	17.27	10.16
* MFC-14FD	37.1	27.94	22.4	15.24
* MFC-16FD	39.6	30.48	24.89	17.78
* MFC-20FD	44.7	35.56	30.0	22.86
* MFC-26FD	52.3	43.18	37.6	30.48
* MFC-30FD	57.4	48.26	42.7	35.56
* MFC-34FD	62.5	53.34	47.8	40.64
* MFC-40FD	70.1	60.96	55.4	48.26
MFC-50FD	82.8	73.66	68.1	60.96
MFC-60FD	95.5	86.36	80.8	73.66
* MFC-64FD	100.6	91.44	85.9	78.74

* : planning stage

MFC-()LFD



Applicable connectors
MFC-()JPM, RPM
MFC-()LPM, RLPM



MFC-()LFD

Part No.	C	E	G
* MFC-10LFD	17.27	10.16	15.24
* MFC-14LFD	22.4	15.24	20.32
* MFC-16LFD	24.89	17.78	22.86
* MFC-20LFD	30.0	22.86	27.94
* MFC-26LFD	37.6	30.48	35.56
* MFC-30LFD	42.7	35.56	40.64
* MFC-34LFD	47.8	40.64	45.72
* MFC-40LFD	55.4	48.26	53.34
MFC-50LFD	68.1	60.96	66.04
MFC-60LFD	80.8	73.66	78.74
* MFC-64LFD	85.9	78.74	83.82

* : planning stage

The 50-contact connector has a groove that corresponds to the click key.

● Part No. (Ordering No.)

MFC-()LFD

- Series prefix
- Number of contacts
- Right-angle type (Blank: Straight type)
- Solder Dip type female connector

Material

Insulator	Glass-filled PBT resin UL94V-0 Black
Contact	Phosphor bronze
Fixture	Phosphor bronze
Plating	
Contact	Gold over nickel plate
Terminal	Solder over nickel plate

Performance

Rated voltage	250 V AC (RMS)
Rated current	1 A
Withstand voltage	800 V AC (RMS) for one minute
Insulation resistance	1000 MΩ or more at 500 V DC

Environment

Operating temperature range	-55°C to +105°C
Operating humidity range	R.H. less than 90%

DIMENSIONAL DRAWING (viewed from the connector mounting side)

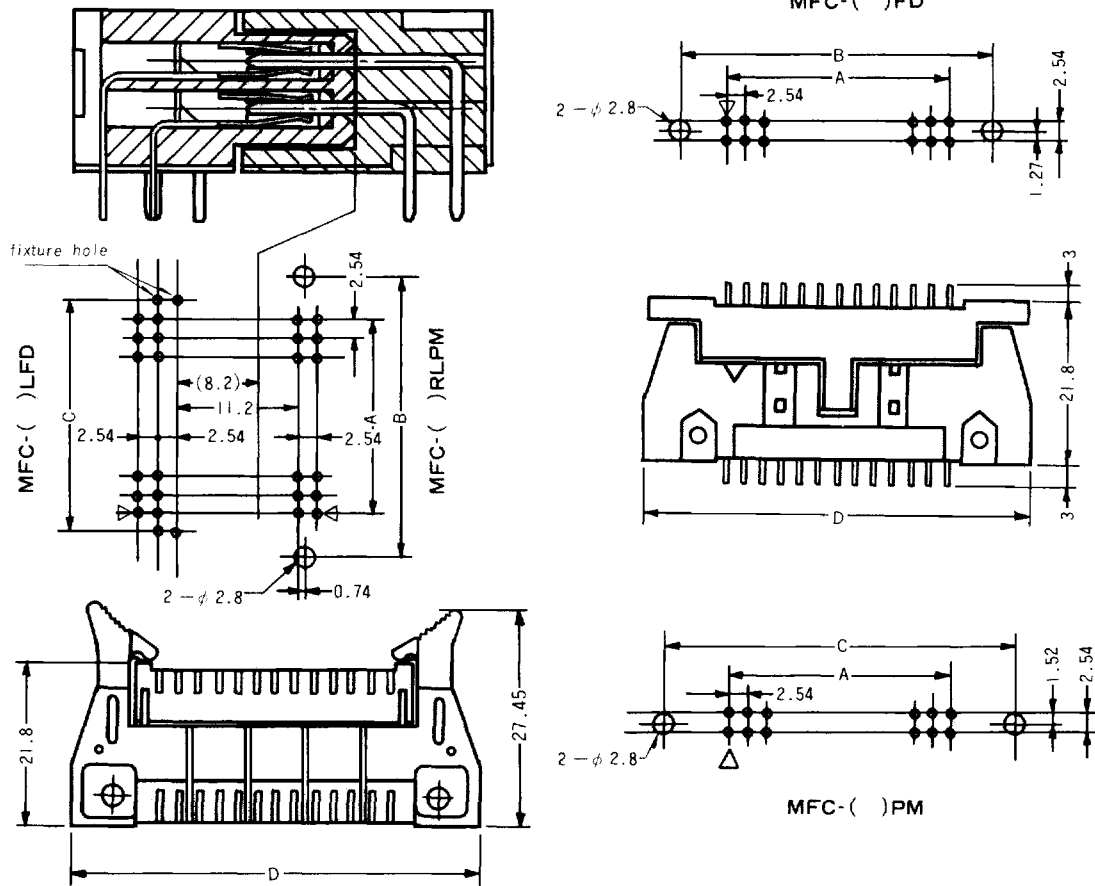


Table 1 Right-angle type

Number of contacts	A	B	C	D
50	60.96	72.6	66.04	82.8
60	73.66	85.3	78.74	95.5

Table 2 Straight type

Number of contacts	A	B	C	D
50	60.96	73.66	78.7	82.8
60	73.66	86.36	91.4	95.5