

VIEW OF WIRE END OF CONNECTOR

NOTES: UNLESS OTHERWISE SPECIFIED

- GENERAL TOLERANCES:
  - ±0.10 ALL TWO PLACE DIMENSIONS
  - ±0.3 ALL ONE PLACE DIMENSIONS
  - ±1.0° ALL ANGULAR DIMENSIONS
- 0.5° MAXIMUM DRAFT ANGLE
- 0.3 MAXIMUM RADIUS PERMISSIBLE ON ALL EDGES AND FILLETS SHOWN AS SHARP
- ALL RADI: 0.8
- WALL THICKNESS 1.3-1.0

DATE LET	REVISIONS	DR CK APP
11-18-77	RELEASED COMPLETE	
	AKI-6000 # 86	

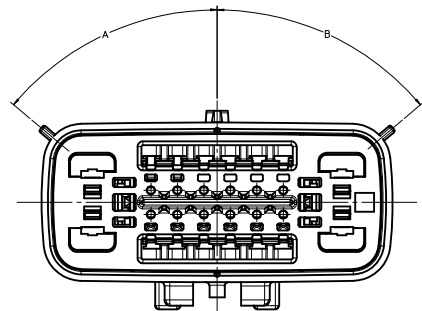
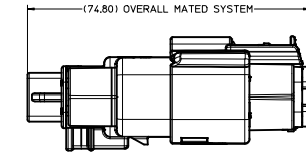
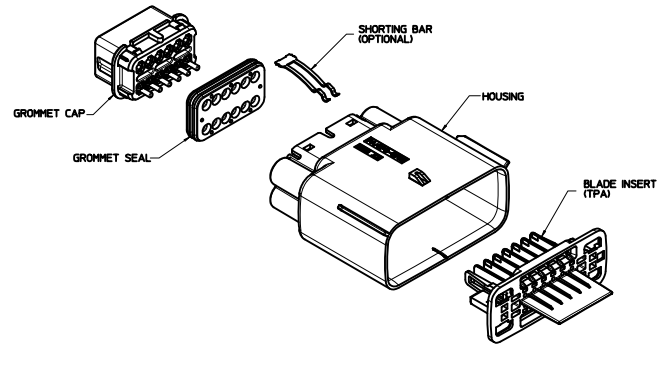
NO. ES-EIAB-14A485-AA

**SPRINT PRODUCT ENGINEERING**

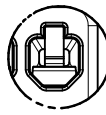
MILLIMETERS ON ORIGINAL FORMAT - 1:1	DO NOT SCALE	ABOVE SCALE FOR REFERENCE ONLY
10 20 30 40 50 60 70 80 90 100 110 120 130 140		

DRAWN BY	DATE	CHECKED	SCALE	APPROVED	CODE
Jones	11-8-77	CE	1/2N	MA	

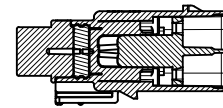
NAME: SPECIFICATION - RETAINER - WIRE CONNECTOR SLEEVE  
 MATERIAL: 55-  
 DATE: 11-8-77  
 NO. ES-EIAB-14A485-AA



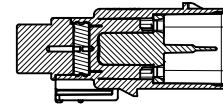
KEYING OPTION  
SEE TABLE  
SCALE 4:1



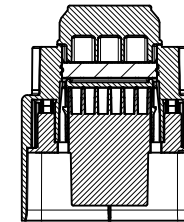
DETAIL 1  
SCALE 10:1  
USE ONLY BLADE TERMINAL P/N 31296-0008  
FOR ALL SHORTING BAR APPLICATIONS  
INSERT SHORTING BAR BLADE TERMINALS INTO  
GROMMET CAP OPENINGS AS SHOWN ABOVE



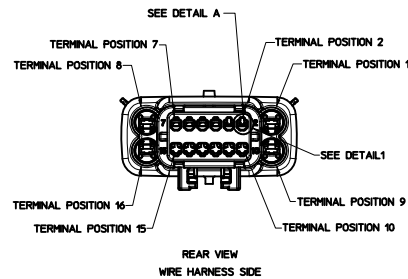
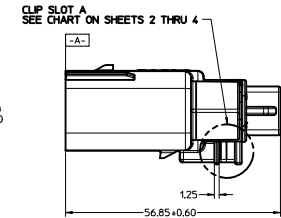
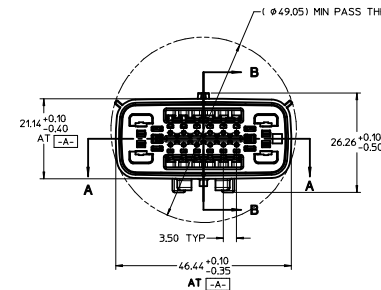
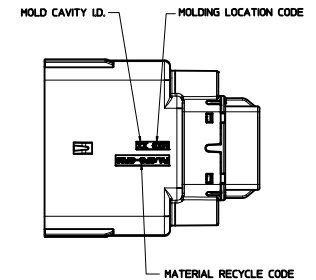
SECTION B-B  
INSERT SHOWN IN PRE-LOCK POSITION  
SEE NOTE 2



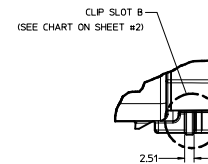
SECTION B-B  
INSERT SHOWN IN FINAL LOCK POSITION  
SEE NOTE 2



SECTION A-A



REAR VIEW  
WIRE HARNESS SIDE

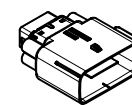


CLIP SLOT B  
(SEE CHART ON SHEET #2)  
APPLIES TO 33486-1721 THRU 1729,  
33486-1761, 33486-1764, AND 33486-1765 ONLY  
SCALE 2:1

NOTES: UNLESS OTHERWISE STATED

- DESIGNED TO MATE WITH RECEPTACLE HOUSING ASSEMBLY SPECIFIED IN DRAWING SD-33476-161.
- ASSEMBLY SHIPPED WITH BLADE INSERT IN PRE-LOCKED POSITION (SEE SECTION B-B PRE-LOCK). UPON FULL TERMINAL ASSEMBLY, EACH BLADE INSERT MUST BE SNAPPED INTO ITS FINAL-LOCK POSITION. FORCE TO MOVE TPA FROM FINAL LOCK TO PRE-LOCK POSITION: 75 N MAX.
- FOR 15mm BLADE TERMINALS TO BE USED WITH THIS ASSEMBLY SEE MOLEX DRAWING SD-33500-001 FOR 2.8mm RECEPTACLE TERMINALS SEE TABLE.
- SYSTEM TO BE USED WITH WIRE WITHIN RANGE OF 1.5mm TO 2.5mm.
- MATERIAL: SPS/NYLON BLEND, 20% GLASS FILLED.
- FOR ASSEMBLIES W/SHORTING BARS, ASSEMBLE SHORTING BARS PER SPECIFICATION E-33546-001
- SHORTING BAR TERMINAL CRIMP ANGLE MUST BE BETWEEN -14 DEG. AND +35 DEG. AFTER INSTALLATION INTO THE CONNECTOR ASSEMBLY. REFER TO MOLEX DRAWING SD-31296-001 FOR DETAILS.
- SHALL CONFORM TO PACKAGING SPECIFICATION PK-31300-514.
- SHALL CONFORM TO PRODUCT SPECIFICATION PS-33476-000.
- ASSEMBLY CONFORMS TO SAE/USCAR-2 REV. 4 WITH THE FOLLOWING EXCEPTIONS:  
14 AWG TERMINAL INSERTION FORCES SHALL NOT EXCEED 42 NEWTONS.

TYO9 2.8mm CABLE SEAL TERMINAL		
FORD P/N	MALE BLADE	GRIP SIZE
SP2T-14421-GA	12	
IFT-14421-JA	14	
IFT-14421-HA	16	
IFT-14421-GA	18	
IFT-14421-FA	20	
IFT-14421-EA	22	



SCALE 1:1

REDRAWN EC NO. DRWINGSTRTL DRAWING PART: 33486-1761 REV: B02	QUALITY SYMBOLS ▽=0 ▽=0	GENERAL TOLERANCES (UNLESS SPECIFIED) mm INCH	DIMENSION STYLE MM ONLY	SCALE 2:1	DESIGN UNITS METRIC	THIRD ANGLE PROJECTION
		4 PLACES ±.00 ±.005 3 PLACES ±.00 ±.005 2 PLACES ±.01 ±.005 1 PLACE ±.03 ±.005 ANGULAR ± 3°	DRAWN BY JWESLEY DATE 06-16-02 CHECKED BY DGRIFITHS DATE 07-09-02 APPROVED BY FHOLUB DATE 07-09-02	MATERIAL NO. SEE TABLE DOCUMENT NO. SD-33486-161	SHEET NO. 1 OF 4	





