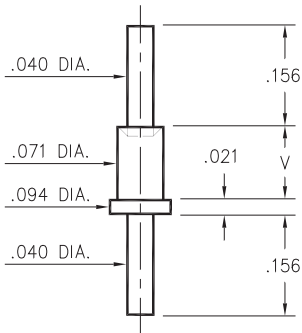


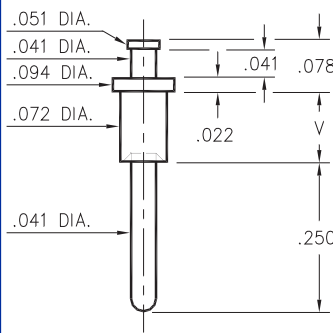
2319



2319-X-00-XX-00-00-07-0
Swage mount in .076 hole

- X -	Board Thickness	Length V
1	.031	.051
2	.062	.082
3	.094	.113

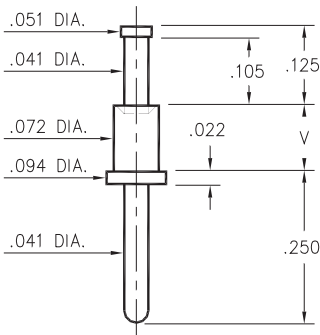
2313



2313-X-00-XX-00-00-07-0
Swage mount in .076 hole

- X -	Board Thickness	Length V
1	.031	.051
2	.062	.084
3	.094	.113
4	.125	.145

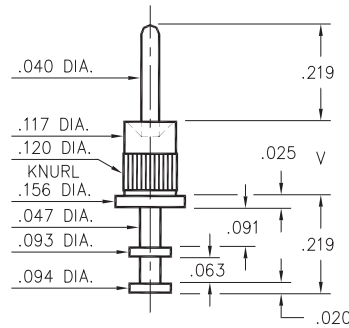
2321



2321-X-00-XX-00-00-07-0
Swage mount in .076 hole

- X -	Board Thickness	Length V
1	.031	.051
2	.062	.082
3	.094	.113
4	.125	.145

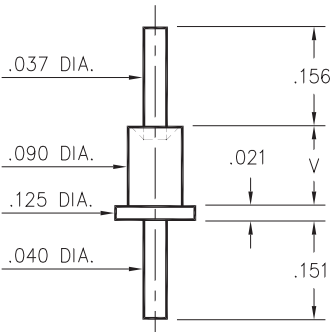
2706



2706-X-00-XX-00-00-07-0
Swage mount in .120 hole

- X -	Board Thickness	Length V
1	.031	.063
2	.062	.093
3	.094	.125
4	.125	.156

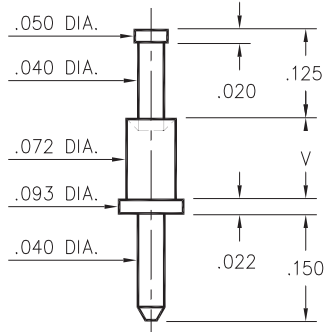
2530



2530-X-00-XX-00-00-07-0
Swage mount in .094 hole

- X -	Board Thickness	Length V
2	.062	.094
3	.094	.125
4	.125	.156

3156



3156-X-00-XX-00-00-08-0
Swage mount in .076 hole

Basic Part Number	Board Thickness	Length V
3156-1	.031	.051
3156-2	.062	.082
3156-3	.094	.113
3156-4	.125	.145

SPECIFICATIONS

PIN MATERIAL:
Brass Alloy 360, 1/2 Hard
Swage pins are annealed

DIMENSION IN INCHES
TOLERANCES ON:
LENGTHS: ±.005
DIAMETERS: ±.002
ANGLES: ± 2°

ORDER CODE: XXXX - X - 00 - XX - 00 - 00 - XX - 0

BASIC PART #

SPECIFY PIN FINISH:

- 01 200µ" TIN/LEAD OVER NICKEL
- ◇ 80 200µ" TIN OVER NICKEL (RoHS)
- ◇ 44 300µ" SILVER OVER COPPER (RoHS)
- ◇ 50 300µ" ELECTRO-SOLDER (RoHS) (60/40 SnPb)

