

Power Connector



CCT2302-037□F

2P Inlet

Specifications

1. Rating : 2.5A 250V AC
7A 125V AC (Except non-polarized type)
2. Insulation Resistance : 300MΩ min. at 500V DC
3. Withstanding Voltage : 2000V AC for one minute
4. Operating Temperature Range: -20°C to +60°C
5. Main Unit Material : Polyphenylene Ether (PPE), Black, 94V-1

Note

1. These inlets are independent type from the printed circuit board.
2. A structure is adopted for the jacks to be fixed into the chassis by a sliding method.
3. A lead-free product.



CCT2302-038□F

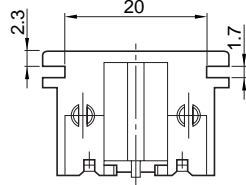
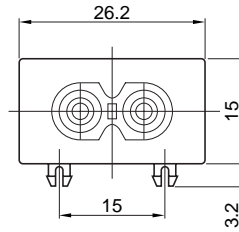
2P Inlet

Specifications

1. Rating : 2.5A 250V AC
7A 125V AC (Except non-polarized type)
2. Insulation Resistance : 300MΩ min. at 500V DC
3. Withstanding Voltage : 2000V AC for one minute
4. Operating Temperature Range: -20°C to +60°C
5. Main Unit Material : Polyphenylene Ether (PPE), Black, 94V-1

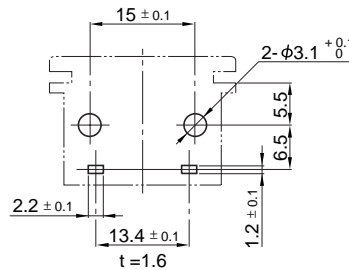
Note

1. These inlets are independent type from the printed circuit board.
2. Can be fixed to the chassis with two tapping screws.
3. A lead-free product.



CCT2302-0371

P.C. Board Dimension



1. プリント基板に自立する構造です。
2. シャーシにはスライド式にてハメ込む構造です。
3. 鉛フリー対応品です。

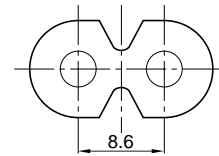
Approval Standards:

UL
CSA
SEV
VDE
SEMKO
DEMKO
NEMKO

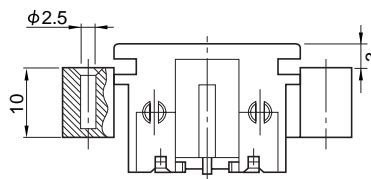
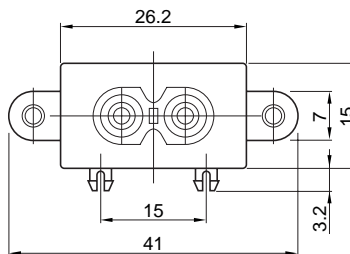
* Polarized model approved by UL and CSA.

有極タイプはUL,CSAのみ取得。

Applicable Plug (European Type)

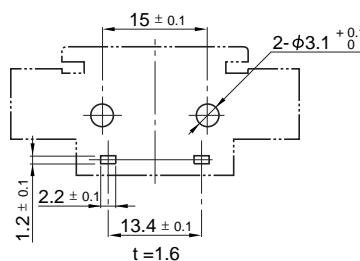


□	Polarized Type (Color)
1	Non-Polarized (Black)
3	Polarized (Black)
4	Polarized (Black) Reverse Type



CCT2302-0381

P.C. Board Dimension



1. プリント基板に自立する構造です。
2. シャーシには2ヶ所でタッピングねじ固定ができます。
3. 鉛フリー対応品です。

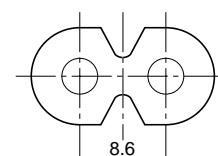
Approval Standards:

UL
CSA
SEV
VDE
SEMKO
DEMKO
NEMKO

* Polarized model approved by UL and CSA.

有極タイプはUL,CSAのみ取得。

Applicable Plug (European Type)



□	Polarized Type
1	Non-Polarized
2	Polarized

Power Connector



CCT2302-0501F

2P Inlet (Non-Polarized)

Specifications

1. Rating : 2.5A 250V AC
2. Insulation Resistance : 300MΩ min. at 500V DC
3. Withstanding Voltage : 2000V AC for one minute
4. Operating Temperature Range : -20°C to +60°C
5. Main Unit Material : Polyphenylene Ether (PPE), Black, 94V-1

Note

1. These inlets are independent type from the printed circuit board.
 2. A structure is adopted for the jacks to be fixed into the chassis by a sliding method.
 3. A lead-free product.
1. プリント基板に自立する構造です。
 2. シャーシにはスライド式にてハメ込む構造です。
 3. 鉛フリー対応品です。



CCT2302-0601F

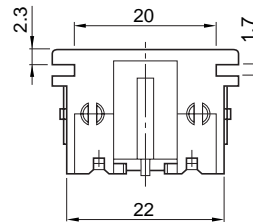
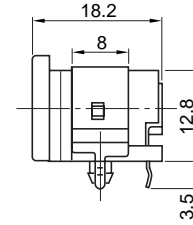
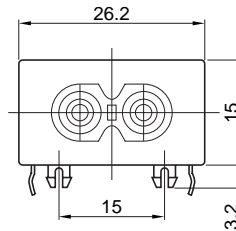
2P Inlet (Non-Polarized)

Specifications

1. Rating : 2.5A 250V AC
2. Insulation Resistance : 300MΩ min. at 500V DC
3. Withstanding Voltage : 2000V AC for one minute
4. Operating Temperature Range : -20°C to +60°C
5. Main Unit Material : Polyphenylene Ether (PPE), Black, 94V-1

Note

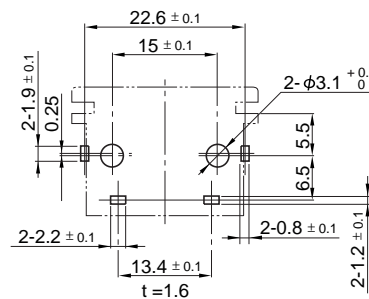
1. These inlets are independent type from the printed circuit board.
2. A structure is adopted for the jacks to be fixed into the chassis by a sliding method.
3. A lead-free product.



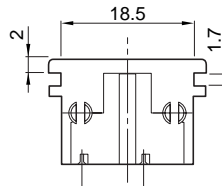
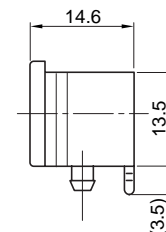
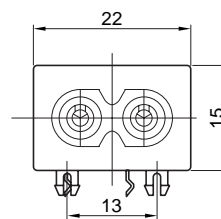
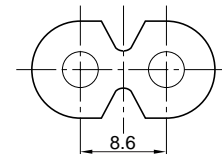
Approval Standards:



P.C. Board Dimension



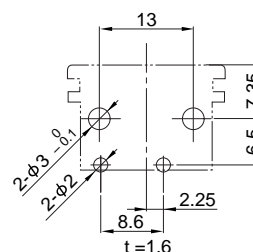
Applicable Plug (European Type)



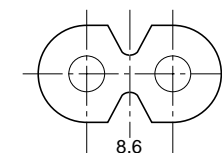
Approval Standards:



P.C. Board Dimension



Applicable Plug (European Type)



1. プリント基板に自立する構造です。
2. シャーシにはスライド式にてハメ込む構造です。
3. 鉛フリー対応品です。

Power Connector



CCT2302-□□F (Made in China 中国製)

Serial No.
Polarized

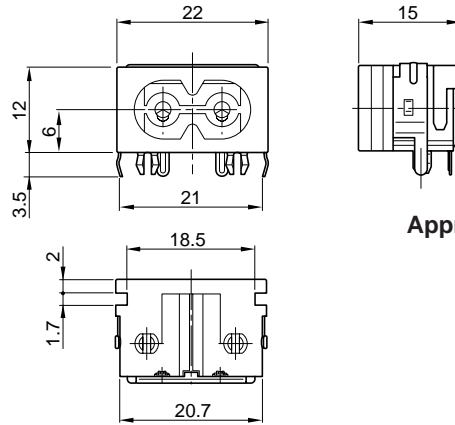
2P Inlet

Features

1. About 27% smaller than our previous equivalent products.
2. IEC320 standards, sheet C8 compatible.
3. Also available with reinforcement hardware and cover.
4. Conforms to safety requirements of European and American standards.
5. A lead-free product.

Specifications

1. Rating : 2.5A 250V AC/7A 125V AC
2. Insulation Resistance : 300MΩ min. at 500V DC
3. Withstanding Voltage : 2000V AC for one minute
4. Operating Temperature Range : -20 to +60
5. Main Unit Material : Poliphenylene Ether (PPE), Black, 94V-0



Approval Standards:

UL
CSA
SEMKO
NEMKO
DEMKO
FIMKO
VDE

特長

1. 体積は当社従来品に比べ約27%小型化しました。
2. 国際規格IEC320スタンダード・シートC8に準拠しています。
3. 補強金具、カバー付き品を用意しています。
4. 欧米各国の安全規格を取得しています。
5. 鉛フリー対応品です。

仕様

1. 定格電圧電流 AC250V 2.5A / AC 125V 7A
2. 絶縁抵抗 DC500V 300M 以上
3. 耐電圧 AC2000V 1分間
4. 使用温度範囲 - 20 ~ + 60
5. 本体材質 変性ポリフェニレンエーテル(PPE) 黒色 94V-0

□□	Polarized 極性	Variation			P.C. Board Dimension 取付基板参考図
		□□ Cover カバー	Metal Fixture 固定金具	Shape 形状	
07	CCT2302-07□□F (Non-Polarized)	01			 t = 1.0-1.6
08	CCT2302-08□□F (Polarized)	11	x		 t = 1.0-1.6
09	CCT2302-09□□F (Polarized)	21	x		 t = 1.0-1.6
		31	x	x	

Power Connector



CCT2102-0251F

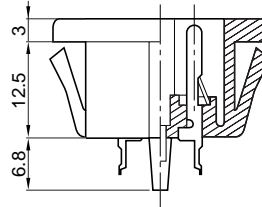
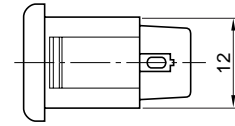
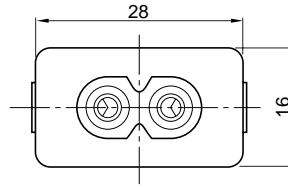
2P Inlet (Non-Polarized)

Specifications

1. Rating : 2.5A 250V AC
2. Insulation Resistance : 300MΩ min. at 500V DC
3. Withstanding Voltage : 2000V AC for one minute
4. Main Unit Material : Polyphenylene Oxide (PPO), Black, 94V-1

Note

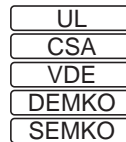
A lead-free product.
鉛フリー対応品です。



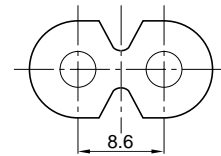
■ Mounting Holes for Panel

Material: Metal
Applicable Thickness: 0.9 to 1.3

Approval Standards:



■ Applicable Plug (European Type)



CCT9302-0101F

2P Inlet (Non-polarized)

Specifications

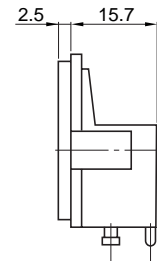
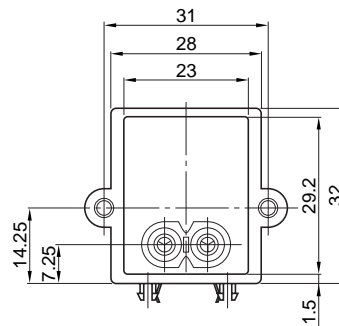
1. Rating : 2.5A 250V AC
2. Insulation Resistance : 300MΩ min. at 500V DC
3. Withstanding Voltage : 2000V AC for one minute
4. Operating Temperature Range : -20°C to +60°C
5. Main Unit Material : Polyphenylene Ether (PPE), Black, 94V-1

Part No.

- CCT9302-0101F (Made in Japan 日本製)
- CCT9302-0101MF (Made in Malaysia マレーシア製)

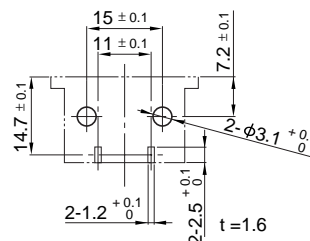
Note

1. These inlets are independent type from the printed circuit board.
 2. Can be fixed to the chassis with two tapping screws.
 3. A lead-free product.
1. プリント基板に自立する構造です。
 2. シャーシに2ヶ所のタッピングねじで固定できます。
 3. 鉛フリー対応品です。

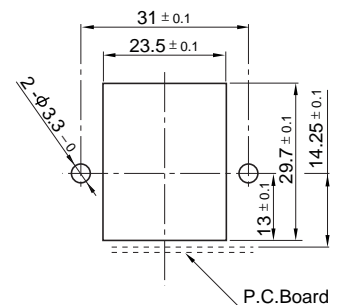


CCT9302-0101

■ P.C. Board Dimension (Top View)



■ Mounting Holes for Panel



Approval Standards:

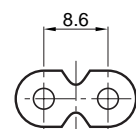
Made in Japan



Made in Malaysia



■ Applicable Plug



Power Connector



CCT9302-0201F

2P Inlet (Polarized)

Specifications

1. Rating : 2.5A 250V AC / 7A 125V AC
2. Insulation Resistance : 300MΩ min. at 500V DC
3. Withstanding Voltage : 2000V AC for one minute
4. Operating Temperature Range : -20°C to +60°C
5. Main Unit Material : Polyphenylene Ether (PPE), Black, 94V-1

Part No.

- CCT9302-0201F(Made in Japan 日本製)
- CCT9302-0201MF(Made in Malaysia マレーシア製)

Note

1. These inlets are independent type from the printed circuit board.
2. Can be fixed to the chassis with two tapping screws.
3. A lead-free product.
1. プリント基板に自立する構造です。
2. シャーシに2ヶ所のタッピングねじで固定できます。
3. 鉛フリー対応品です。



CCT2103-0251F

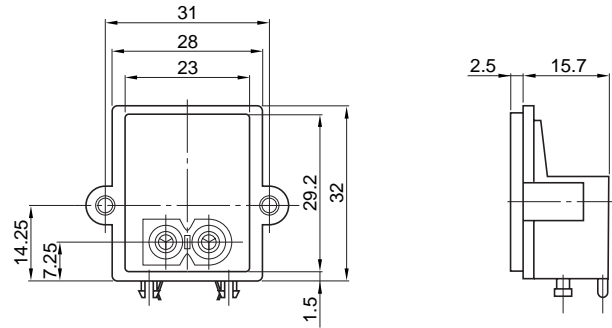
3P Inlet

Specifications

1. Rating : 10A 250V AC
2. Insulation Resistance : 500MΩ min. at 500V DC
3. Withstanding Voltage : 4000V AC for one minute
4. Main Unit Material : Polybutylene Terephthalate (PBT), Black, 94V-0

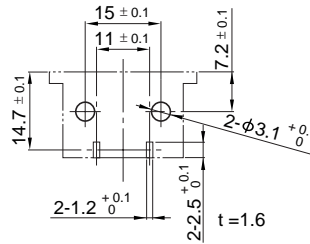
Note

1. 3P inlets which can be fixed to the chassis with plate screws are also available.
2. A lead-free product.
1. シャーシに皿ビスで固定するタイプもあります。
2. 鉛フリー対応品です。

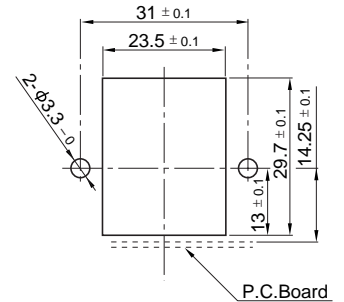


CCT9302-0201

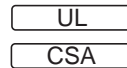
P.C. Board Dimension (Top View)



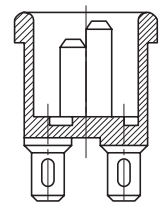
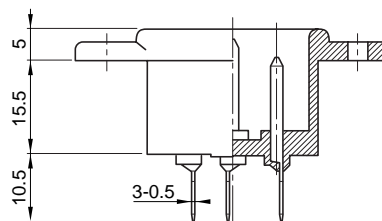
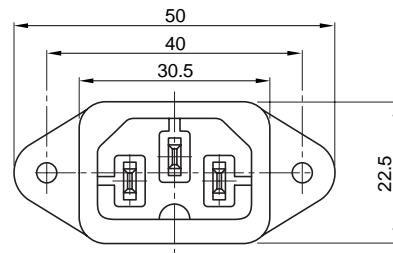
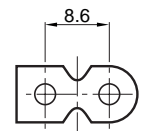
Mounting Holes for Panel



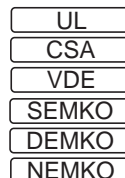
Approval Standards:



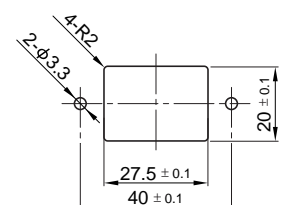
Applicable Plug



Approval Standards:



Mounting Holes for Panel



Power Connector



CCT9304-0101F

Inlet-Outlet

Specifications

1. Rating : 5A 125V AC
2. Contact Resistance : 50mΩ max.
(for AC outlet section)
3. Insulation Resistance : 300MΩ min. at 500V DC
4. Withstanding Voltage : 2000V AC for one minute
5. Operating Temperature Range : -20°C to +100°C
6. Main Unit Material : Polyphenylene Ether (PPE), Black, 94V-1

Note

1. These inlets are independent type from the printed circuit board.
2. Can be fixed to the chassis with two tapping screws.
3. A lead-free product.



CCT9304-0201F

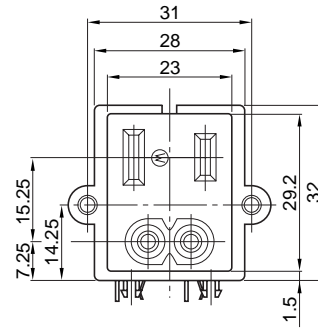
Inlet-Outlet (Polarized)

Specifications

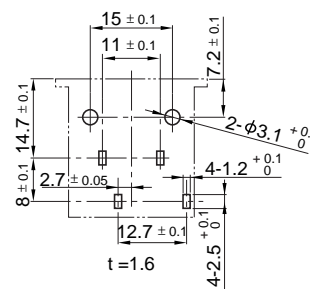
1. Rating : 5A125V AC
2. Contact Resistance : 50mΩ max.
(for AC outlet section)
3. Insulation Resistance : 300MΩ min. at 500V DC
4. Withstanding Voltage : 2000V AC for one minute
5. Operating Temperature Range : -20°C to +100°C
6. Main Unit Material : Polyphenylene Ether (PPE), Black, 94V-1

Note

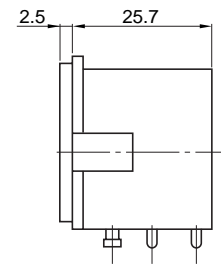
1. These inlets are independent type from the printed circuit board.
2. Can be fixed to the chassis with two tapping screw.
3. A lead-free product.



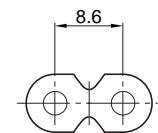
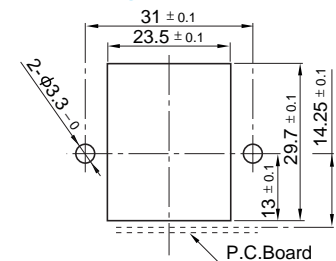
P.C. Board Dimension (Top View)



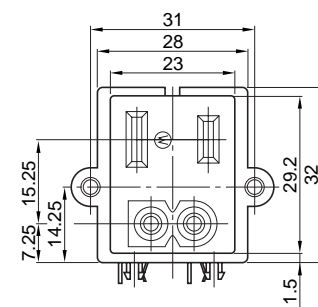
Mounting Holes for Panel



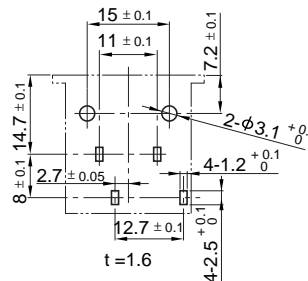
Applicable Plug



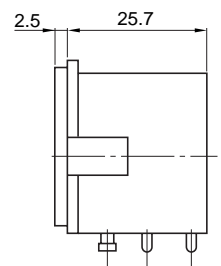
1. プリント基板に自立する構造です。
2. シャーシに2ヶ所のタッピングねじで固定できます。
3. 鉛フリー対応品です。



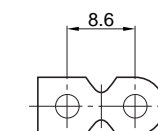
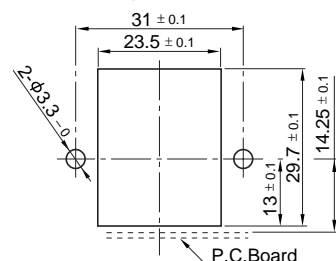
P.C. Board Dimension (Top View)



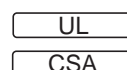
Mounting Holes for Panel



Applicable Plug



Approval Standards



1. プリント基板に自立する構造です。
2. シャーシに2ヶ所のタッピングねじで固定できます。
3. 鉛フリー対応品です。

Power Connector



CCT9304-0401F

Inlet-Outlet (Polarized)

Specifications

1. Rating : 5A125V AC
2. Contact Resistance : 50mΩ max.
(for AC outlet section)
3. Insulation Resistance : 300MΩ min. at 500V DC
4. Withstanding Voltage : 2000V AC for one minute
5. Operating Temperature Range : -20°C to +100°C
6. Main Unit Material : Polyphenylene Ether (PPE), Black, 94V-0

Note

1. These inlets are independent type from the printed circuit board.
2. Can be fixed to the chassis with two tapping screw.
3. A lead-free product.



CCT5902-0901F

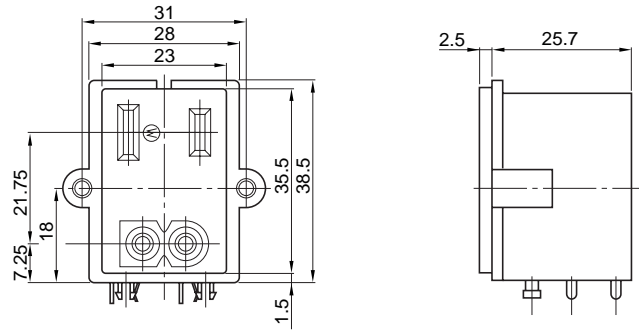
AC Adapter (Polarized)

Specifications

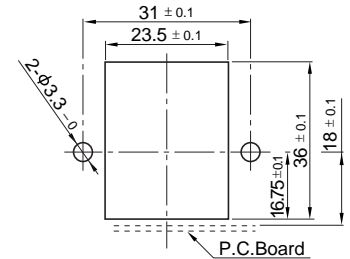
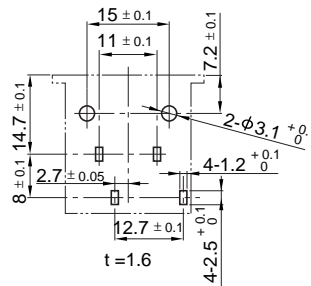
1. Rating : 6A 125V/250V AC
2. Contact Resistance : 100mΩ max.
3. Insulation Resistance : 100MΩ min. at 500V DC
4. Withstanding Voltage : 2000V AC for one minute
5. Operating Temperature Range : -20°C to +70°C
6. Main Unit Material : Polyphenylene Ether (PPE), Black, 94V-1

Note

- A lead-free product.
鉛フリー対応品です。

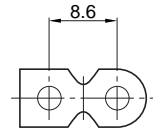
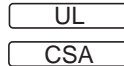


■ P.C. Board Dimension ■ Mounting Holes for Panel (Top View)

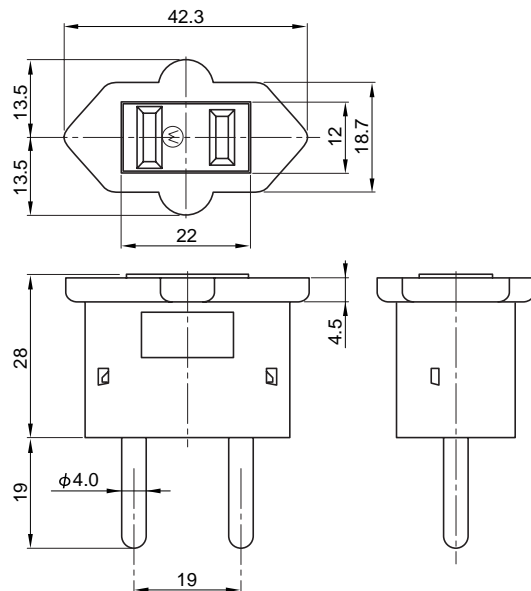


■ Applicable Plug

Approval Standards



1. プリント基板に自立する構造です。
2. シャーシに2ヶ所のタッピングねじで固定できます。
3. 鉛フリー対応品です。



Approval Standards:

