



Pulse Transformers

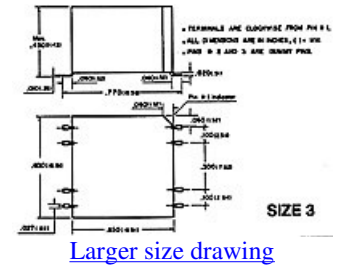
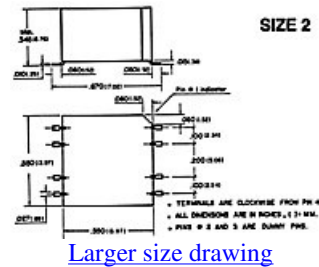
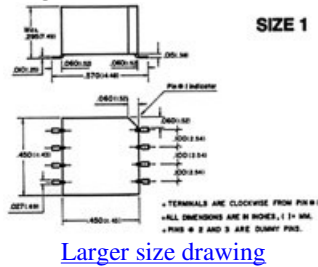
SURFACE MOUNT

PICO surface mount units utilize materials and methods to withstand extreme temperatures of vapor phase, I.R., and other reflow procedures without degradation of electrical or mechanical characteristics.

Specifications

- Units manufactured to MIL-PRF-21038.
- **DIELECTRIC STRENGTH:** All units tested at 500 V RMS.
- **OPERATING TEMPERATURE:** -55° C to +130° C
- **INSULATION RESISTANCE:** Greater than 10,000 Megohms at 700 V DC.
- **TERMINALS:** Meet solderability per MIL-STD-202, Method 208.
- **THERMAL SHOCK:** 25 Cycles, Method 107, MIL-STD-202, Test Condition -55 ° C to +130° C.
- **WEIGHT SIZE:** 1-2.5 Grams; 2-4.5 Grams; 3-8.0 Grams

Mechanical Drawings:



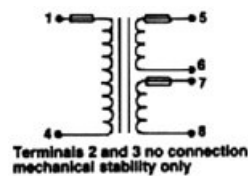
SIZE 1											
PICO PART #	TURNS RATIO TOLER. ±5%	Lm TYPICAL μH	LEAKAGE IND. VALUE IN μH TYPICAL		WINDING RESISTANCE MAX VALUE IN OHMS (+/- 25%)			TYPICAL INTER-WINDING CAP VALUE IN pF		E.T. RATING VOLT - μSEC MAX. PRIMARY	PRICE (1-9) (US \$)
			LL (N1-N2)	LL (N1-N3)	R(N1)	R(N2)	R(N3)	C1 (N1-N2)	C2 (N1-N3)		
75005	1:1:1	150	.100	.250	.059	.068	.077	25	12	10	34.56
75010	1:1:1	600	.400	1.1	.15	.18	.21	25	12	20	34.56
75015	1:1:1	1300	.900	2.5	.45	.51	.58	25	12	30	34.56
75020	1:1:1	2400	1.6	4.2	1.14	1.27	1.39	25	12	40	34.56
75025	1:1:1	3700	3.0	6.5	2.0	2.3	2.5	25	12	50	34.56
75030	2:1:1	150	.250	.450	.065	.019	.022	25	12	10	34.56
75035	2:1:1	600	1.0	1.5	.15	.074	.087	25	12	20	34.56
75040	2:1:1	1300	1.5	3.5	.45	.10	.13	25	12	30	34.56
75045	2:1:1	2400	2.2	6.0	1.14	.17	.20	25	12	40	34.56
75050	2:1:1	3700	3.4	9.0	1.95	.28	.33	25	12	50	34.56

SIZE 1											
PICO PART #	TURNS RATIO TOLER. ±5%	Lm TYPICAL μH	LEAKAGE IND. VALUE IN μH TYPICAL		WINDING RESISTANCE MAX VALUE IN OHMS (+/- 25%)			TYPICAL INTER-WINDING CAP VALUE IN pF		E.T. RATING VOLT - μSEC MAX. PRIMARY	PRICE (1-9) (US \$)
			LL (N1-N2)	LL (N1-N3)	R(N1)	R(N2)	R(N3)	C1 (N1-N2)	C2 (N1-N3)		
75055	3:1:1	200	.617	1.0	.074	.012	.014	25	12	12	34.56
75060	3:1:1	800	1.2	1.5	.18	.035	.040	25	12	24	34.56
75065	3:1:1	1800	2.5	5.0	.37	.15	.16	25	12	36	34.56
75070	3:1:1	3200	4.5	10.0	.62	.25	.28	25	12	48	34.56
75075	3:1:1	5300	7.0	15.0	1.28	.25	.28	25	12	60	34.56
75080	3:3:1	200	200	1.0	.075	.094	.018	25	12	12	34.56
75085	3:3:1	800	1.0	1.5	.18	.22	.042	25	12	24	34.56
75090	3:3:1	1800	2.5	5.0	.60	.78	.30	25	12	36	34.56
75095	3:3:1	3200	4.5	10.0	.95	1.18	.55	25	12	48	34.56
75100	3:3:1	5300	7.0	15.0	1.50	1.89	.72	25	12	60	34.56
75105	4:2:1	200	.506	2.0	.047	.030	.016	25	12	12	34.56
75110	4:2:1	800	1.5	3.0	.18	.071	.041	25	12	24	34.56
75115	4:2:1	1800	3.0	5.5	.46	.28	.16	25	12	36	34.56
75120	4:2:1	3200	5.5	10.0	.77	.46	.25	25	12	48	34.56
75125	4:2:1	5300	8.0	15.0	1.23	.75	.41	25	12	60	34.56

SIZE 2											
PICO PART #	TURNS RATIO TOLER. ±5%	Lm TYPICAL μH	LEAKAGE IND. VALUE IN μH TYPICAL		WINDING RESISTANCE MAX VALUE IN OHMS (+/- 25%)			TYPICAL INTER-WINDING CAP VALUE IN pF		E.T. RATING VOLT - μSEC MAX. PRIMARY	PRICE (1-9) (US \$)
			LL (N1-N2)	LL (N1-N3)	R(N1)	R(N2)	R(N3)	C1 (N1-N2)	C2 (N1-N3)		
75210	1:1:1	250	.350	.712	.036	.042	.048	35	18	16	34.56
75215	1:1:1	1000	.650	1.2	.12	.15	.17	35	18	32	34.56
75220	1:1:1	2250	1.5	3.0	.28	.32	.37	35	18	48	34.56
75225	1:1:1	4000	2.5	5.0	.59	.66	.74	35	18	65	34.56
75230	1:1:1	6200	4.0	8.0	1.18	1.34	1.50	35	18	80	34.56
75235	2:1:1	250	.400	.815	.036	.01	.012	35	18	16	34.56
75240	2:1:1	1000	.800	1.6	.12	.044	.049	35	18	32	34.56
75245	2:1:1	2250	1.8	3.6	.28	.11	.13	35	18	48	34.56
75250	2:1:1	4000	3.2	6.4	.59	.17	.20	35	18	65	34.56
75255	2:1:1	6200	5.0	10.0	1.18	.26	.31	35	18	80	34.56
75260	3:1:1	350	.400	.900	.037	.019	.021	35	18	19	34.56
75265	3:1:1	1400	1.1	2.2	.15	.035	.039	35	18	38	34.56
75270	3:1:1	3000	2.4	5.0	.42	.062	.068	35	18	57	34.56
75275	3:1:1	5500	4.2	8.0	.75	.23	.24	35	18	76	34.56
75280	3:1:1	9000	6.5	10.0	.96	.38	.40	35	18	95	34.56
75285	3:3:1	350	.450	1.0	.057	.072	.028	35	18	19	34.56
75290	3:3:1	1400	1.2	2.6	.15	.17	.065	35	18	38	34.56
75295	3:3:1	3000	2.5	5.0	.42	.48	.089	35	18	57	34.56
75300	3:3:1	5500	4.5	9.0	.94	1.14	.43	35	18	76	34.56

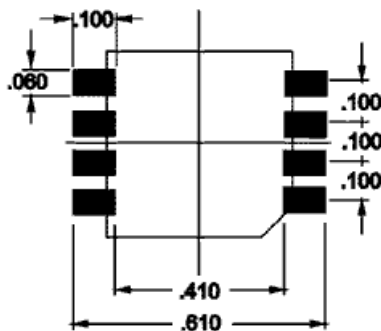
75305	3:3:1	9000	7.0	14.0	1.54	1.74	.64	35	18	95	34.56
75310	4:2:1	350	.700	1.64	.040	.023	.014	35	18	19	34.56
75315	4:2:1	1400	1.3	2.7	.12	.067	.035	35	18	38	34.56
75320	4:2:1	3000	2.7	5.5	.42	.12	.070	35	18	57	34.56
75325	4:2:1	5500	4.8	9.0	.94	.27	.15	35	18	76	34.56
75330	4:2:1	9000	7.5	15.0	1.53	.35	.19	35	18	95	34.56

SIZE 3											
PICO PART #	TURNS RATIO TOLER. ±5%	Lm TYPICAL μH	LEAKAGE IND. VALUE IN μH TYPICAL		WINDING RESISTANCE MAX VALUE IN OHMS (+/- 25%)			TYPICAL INTER-WINDING CAP VALUE IN pF		E.T. RATING VOLT - μSEC MAX. PRIMARY	PRICE (1-9) (US \$)
			LL (N1-N2)	LL (N1-N3)	R(N1)	R(N2)	R(N3)	C1 (N1-N2)	C2 (N1-N3)		
75515	1:1:1	300	.300	.400	.035	.040	.045	45	25	25	34.56
75520	1:1:1	1200	1.25	1.9	.095	.11	.13	45	25	50	34.56
75525	1:1:1	2700	1.75	4.2	.22	.26	.29	45	25	75	34.56
75530	1:1:1	4800	3.0	7.3	.46	.53	.60	45	25	100	34.56
75535	1:1:1	7500	4.6	11.4	.78	.96	1.15	45	25	125	34.56
75540	2:1:1	300	.514	.630	.035	.013	.014	45	25	25	34.56
75545	2:1:1	1200	.900	1.7	.095	.043	.047	45	25	50	34.56
75550	2:1:1	2700	2.0	3.7	.22	.10	.12	45	25	75	34.56
75555	2:1:1	4800	3.0	6.5	.46	.17	.19	45	25	100	34.56
75560	2:1:1	7500	4.88	10.0	.80	.28	.34	45	25	125	34.56
75565	3:1:1	400	.686	.800	.042	.010	.012	45	25	30	34.56
75570	3:1:1	1600	1.25	3.0	.12	.035	.038	45	25	60	34.56
75575	3:1:1	3600	2.75	6.5	.33	.062	.068	45	25	90	34.56
75580	3:1:1	6400	4.6	1.20	.58	.14	.15	45	25	120	34.56
75585	3:1:1	10,000	7.2	18.0	1.16	.12	.14	45	25	150	34.56
75590	3:3:1	400	.400	1.02	.054	.060	.011	45	25	30	34.56
75595	3:3:1	1600	1.25	1.5	.12	.14	.040	45	25	60	34.56
75600	3:3:1	3600	3.0	2.9	.33	.38	.070	45	25	90	34.56
75605	3:3:1	6400	5.3	5.0	.58	.73	.18	45	25	120	34.56
75610	3:3:1	10,000	8.2	7.8	1.16	1.43	.14	45	25	150	34.56
75615	4:2:1	400	.580	1.12	.042	.015	.009	45	25	30	34.56
75620	4:2:1	1600	1.2	3.0	.12	.052	.028	45	25	60	34.56
75625	4:2:1	3600	2.75	7.0	.33	.15	.084	45	25	90	34.56
75630	4:2:1	6400	4.6	12.0	.59	.15	.082	45	25	120	34.56
75635	4:2:1	10,000	7.1	19.6	1.16	.27	.15	45	25	150	34.56

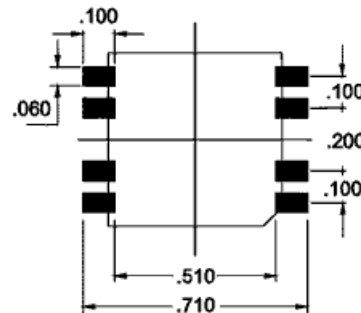


[Click Here For Plug-in Version of 75000 Series](#)

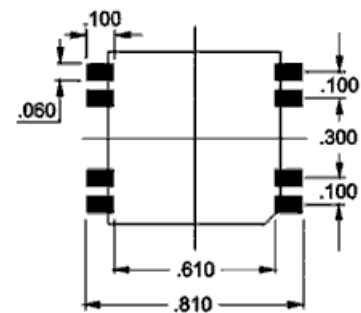
RECOMMENDED LAND PATTERN DIMENSIONS PICO 75000 Series Size 1



RECOMMENDED LAND PATTERN DIMENSIONS PICO 75000 Series Size 2



RECOMMENDED LAND PATTERN DIMENSIONS PICO 75000 Series Size 3



For immediate engineering assistance or to place an order:
Call Toll Free: 800-431-1064

PICO Electronics, Inc.

143 Sparks Ave. Pelham, NY 10803-1837
Tel: 914-738-1400 or Fax: 914-738-8225

[Go back to Surface Mount Transformers and Inductors menu](#)