

Customer Information Sheet

DRAWING No.: F25-300XX06

SHEET 2 OF 2

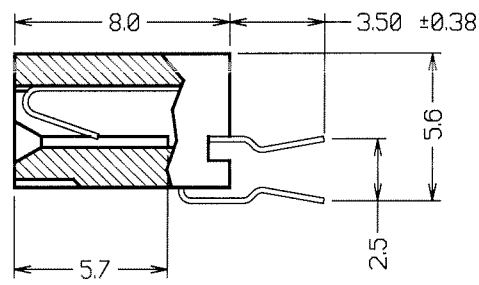
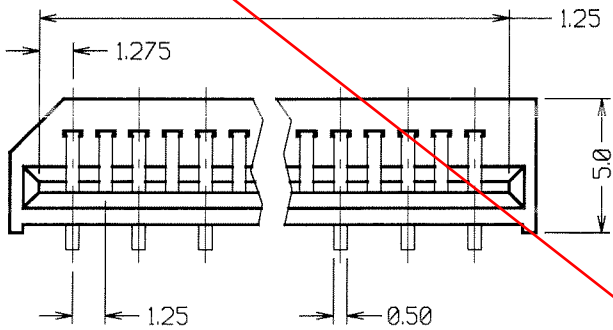
IF IN DOUBT - ASK

©

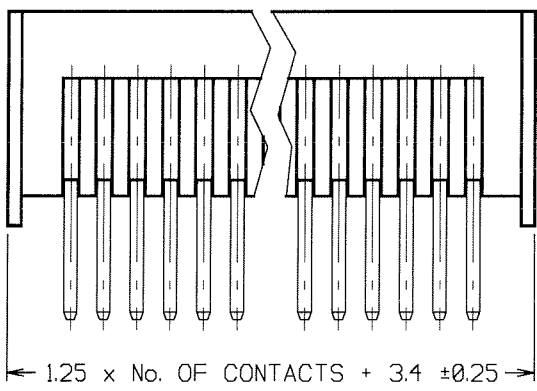
NOT TO SCALE

THIRD ANGLE PROJECTION

ALL DIMENSIONS IN mm



ORDER CODE:
F25-300XX06
No. OF CONTACTS -
03 TO 30



OBSOLETE

SPECIFICATIONS:

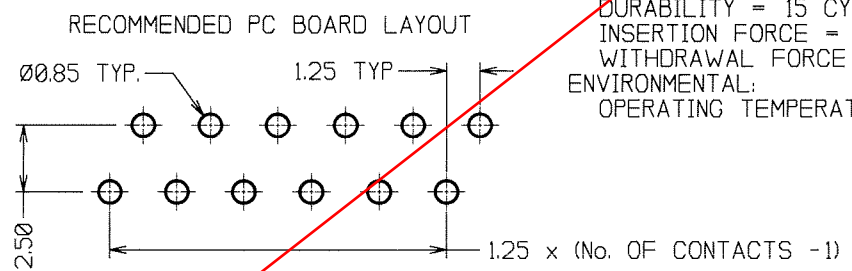
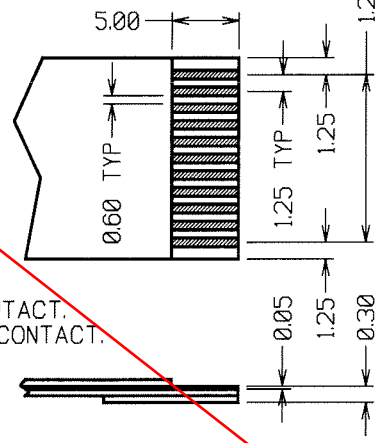
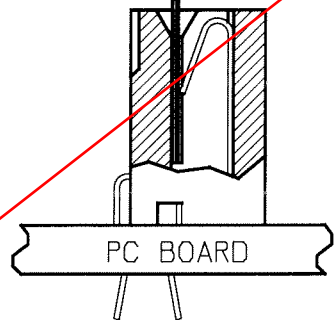
MATERIAL:
MOULDING = POLYESTER UL94V-0.
CONTACT = PHOSPHOR BRONZE

FINISH:
CONTACT = TIN.

ELECTRICAL:
CURRENT RATING = 1A
CONTACT RESISTANCE = 20 MILLIOHMS MAX
INSULATION RESISTANCE = 5000 MEGOHMS MIN
WITHSTANDING VOLTAGE = AC 1000V RMS
OPERATING VOLTAGE = 200V AC

MECHANICAL:
DURABILITY = 15 CYCLES
INSERTION FORCE = 1.5N MAX, 1.2N MIN. PER CONTACT.
WITHDRAWAL FORCE = 1.9N MAX, 1.4N MIN. PER CONTACT.

ENVIRONMENTAL:
OPERATING TEMPERATURE = -55°C TO +105°C



RECOMMENDED FPC/FFC LAYOUT

4	09.07.98	4442
3	18.06.96	3372
2	20.03.96	3229
1	26.02.96	----
ISS.	DATE	C/N
APPROVED:		
CHECKED:		
DRAWN: D. BECK		
CUSTOMER REF.		
ASSEMBLY DRG:		

HARWIN

HARWIN INC U.S.A. TEL: (812) 285 0055 FAX: (812) 285 0056	HARWIN PLC U.K. TEL: 01705 370451 FAX: 01705 314590	HARWIN PTE SINGAPORE TEL: 65 7794909 FAX: 65 7793868
--------------------------------------------------------------------	--------------------------------------------------------------	---------------------------------------------------------------

TOLERANCES
X. = ±1mm
X.X = ±0.25mm
X.XX = ±0.10mm
X.XXX = ±0.01mm
ANGLES = ±1°
UNLESS STATED

MATERIAL:
SEE ABOVE

FINISH:
SEE ABOVE

S/AREA: mm²

TITLE:
1.25mm VERTICAL FPC
CONNECTOR

DRAWING NUMBER:
F25-300XX06

SHT 2 OF 2