

CIC-XXX-XXXX-XX-X

SERIES SPECIFICATION
(SEE TABLE I)

POSITION SPECIFICATION
(SEE TABLE I)

CONTACT INSERTION FORCE SPECIFICATION
-LEAVE BLANK FOR STD I/W FORCES
(SEE TABLE II)

LEAD STYLE SPECIFICATION
(SEE TABLE II)

OPTION
-L: LOCKING LEAD (SEE FIG. 3)
(LEAD STYLE -S OR -ZS ONLY)

CAPACITOR SPECIFICATIONS

-XX	SERIES SPECIFICATION		CAP. X-REF (SEE NOTE 7)
	-03	-6	
-01	CAP-01-C	CAP-01	103Z
-02	CAP-02-C	CAP-02	104Z
-03	CAP-03-C	CAP-03	102M, 102Z
-05	CAP-05-C	CAP-05	334Z
-06	CAP-06-C	CAP-06	224Z

NOTE: (2) CC-01-T NEEDED PER ASSEMBLY
(SEE FIGURE 1 & 2)

PLATING SPECIFICATION

GG: GOLD/GOLD, SPECIFY -GG IN SOCKET SUFFIX -XX
GT: GOLD/TIN, SPECIFY -GT IN SOCKET SUFFIX -XX
TT: TIN/TIN, SPECIFY -TT IN SOCKET SUFFIX -XX
ST: SELECTIVE GOLD/TIN (-S & -ZS ONLY), SPECIFY
-ST IN SOCKET SUFFIX. ON -L OPTION, USE
SC-1L1-GT OR EZ-1L1-GT. NOTE:
ALSO SPECIFY -GT PLATING ON KNURLED SOCKET:
SN-1P1-GT OR SN-1W1-GT-1 (SEE FIG. 1)

DO NOT SCALE
FROM THIS PRINT

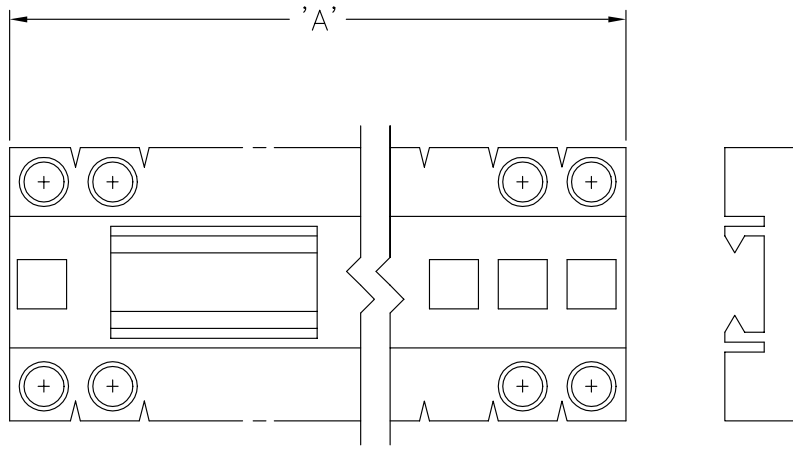


TABLE 1
BODY SPECIFICATIONS
USE SUB-ASSEMBLY WHEN AVAILABLE
(DO NOT USE SUB-ASSEMBLY ON LEAD
STYLE -W OR -ZW AND -L OPTION)

SERIES	POS	SBC-XXX	"A" ±.005 [.13]	SUB-ASSEMBLY AVAILABLE	PKG. TUBE
-3	12	-314	*.595 [15.11]	N/A	PT-3-24-01-01
	14	-314	.695 [17.65] (REF)	SIC-314-SXX (ALL PLATING)	
	16	-316	.795 [20.19] (REF)	SIC-316-SXX (ALL PLATING)	
	18	-324	*.895 [22.73]	N/A	
	20	-320	.995 [25.27] (REF)	SIC-320-SXX (ALL PLATING)	
	22	-324	*1.095 [27.81]	SIC-322-SGT	
-6	24	-324	*1.195 [30.35] (REF)	SIC-324-SGG, SGT, SST	PT-6-24-03-01
	24	-640	*1.195 [30.35]	N/A	
	26	-640	*1.295 [32.89]	N/A	
	28	-640	*1.395 [35.43]	SIC-628-SGG, SGT, STT	
	30	-640	*1.495 [37.97]	N/A	
	32	-640	*1.595 [40.51]	SIC-632-SST, ZSTT	
	34	-640	*1.695 [43.05]	N/A	
	36	-640	*1.795 [45.59]	N/A	
	38	-640	*1.895 [48.13]	N/A	
	40	-640	1.995 (REF)	SIC-640-SXX (ALL PLATING)	

* CUT TO "A" DIM.

NOTES:

- MIN PUSH-OUT FORCE: 10 LBS.
- MIN .007 INCH CRIMP (REF. 3.5 LB. MIN. RETENTION FORCE OF CLIP (CC-01-X) TO LEAD.
- CLIP OR CAP. LEAD NOT TO PROTRUDE BEYOND EDGE OF BODY.
- MAXIMUM ALLOWABLE BOW .006 [.15] IN./IN.
- TUBE PLUG: TP-03, (2) PER TUBE.
- CIC ASSEMBLIES USING SIC SUB-ASSEMBLIES WILL USE TUBE FROM SIC.
- ACTUAL MARKINGS ON CAPACITOR COMPONENTS. FOR INFORMATIONAL PURPOSES ONLY.

PROPRIETARY NOTE

THIS DOCUMENT CONTAINS INFORMATION CONFIDENTIAL AND PROPRIETARY TO SAMTEC INC. AND SHALL NOT BE REPRODUCED OR TRANSFERRED TO OTHER DOCUMENTS OR DISCLOSED TO OTHERS OR USED FOR ANY PURPOSE OTHER THAN THAT FOR WHICH IT WAS OBTAINED WITHOUT THE EXPRESSED WRITTEN CONSENT OF SAMTEC INC.



520 PARK EAST BLVD. NEW ALBANY, INDIANA 47150
PHONE (812) 944-6733 P.O. BOX 1147
CODE 55322

MADE BY: PURVIS 5-3-85
CHECKED BY: L. WILLIAMS 5-15-85

ENG. APPROVAL
K. BECHT 5-15-85
CIC-XXX-XXXX-XX-X
SHEET 1 OF 2

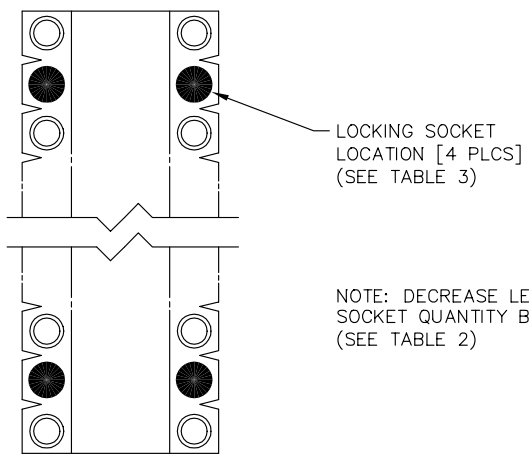


FIG. 3
-L OPTION
[LEAD STYLE -S & -ZS ONLY]

LEAD STYLE	LOCKING SOCKET
-S	SC-1L1-XX
-ZS	EZ-1L1-XX

FIG	SERIES POS	S		ZS		W		ZW	
		LEAD SOCKET SC-1P1-XX	KNURLED SOCKET SN-1P1-XX	LEAD SOCKET EZ-1P1-XX	KNURLED SOCKET SN-1P1-XX	LEAD SOCKET SC-1W1-XX-1	KNURLED SOCKET SN-1W1-XX-1	LEAD SOCKET EZ-1W1-XX-1	KNURLED SOCKET SN-1W1-XX-1
1	312	10	2	10	2	10	2	10	2
1	314	12	2	12	2	12	2	12	2
1	316	14	2	14	2	14	2	14	2
1	318	16	2	16	2	16	2	16	2
1	320	18	2	18	2	18	2	18	2
1	322	20	2	20	2	20	2	20	2
1	324	22	2	22	2	22	2	22	2
2	624	22	2	22	2	22	2	22	2
2	626	24	2	24	2	24	2	24	2
2	628	26	2	26	2	26	2	26	2
2	630	28	2	28	2	28	2	28	2
2	632	30	2	30	2	30	2	30	2
2	634	32	2	32	2	32	2	32	2
2	636	34	2	34	2	34	2	34	2
2	638	36	2	36	2	36	2	36	2
2	640	38	2	38	2	38	2	38	2

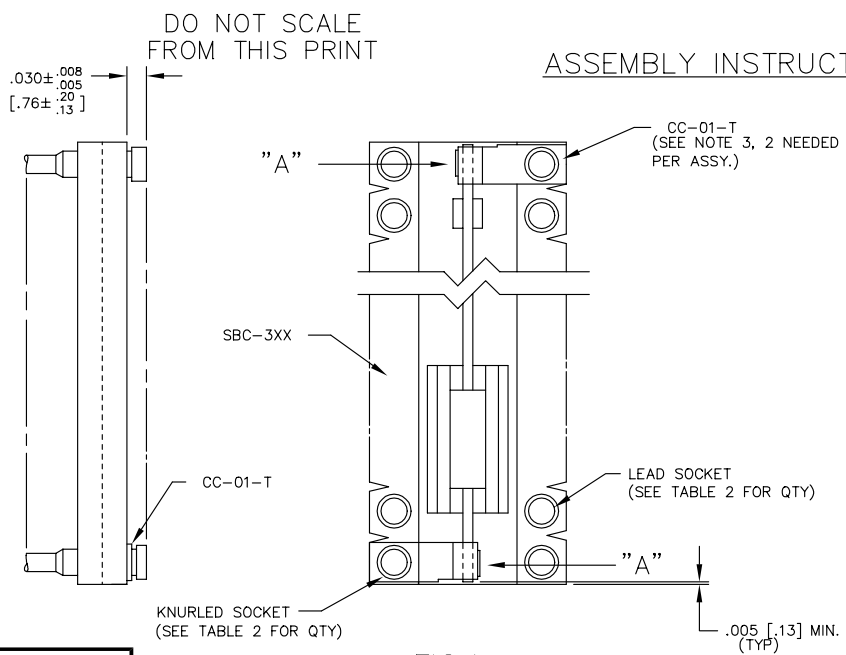


FIG. 1

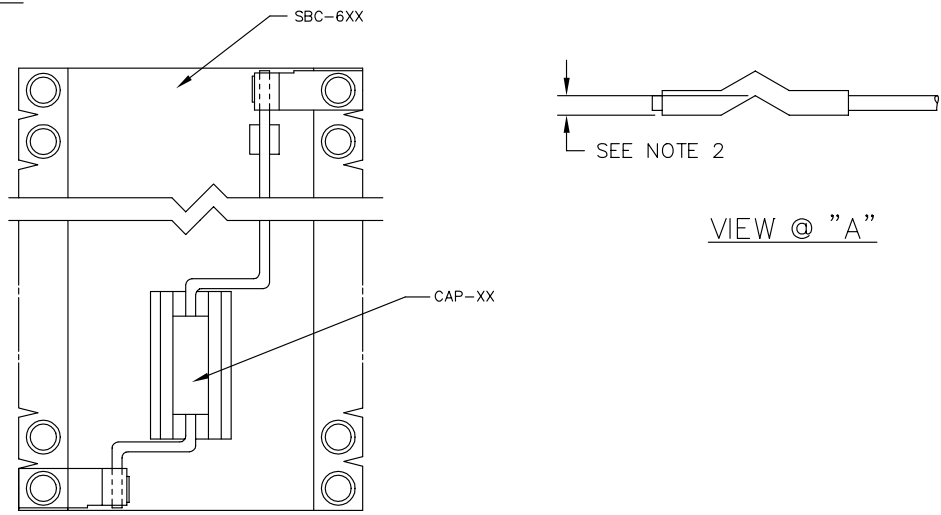


FIG. 2

DIFFERENT AS SHOWN,
OTHERWISE SAME AS FIG. 1

PROPRIETARY NOTE
THIS DOCUMENT CONTAINS INFORMATION CONFIDENTIAL AND PROPRIETARY TO SAMTEC INC. AND SHALL NOT BE REPRODUCED OR TRANSMITTED TO OTHER DOCUMENTS OR DISCLOSED TO OTHERS OR USED FOR ANY PURPOSE OTHER THAN THAT FOR WHICH IT WAS OBTAINED WITHOUT THE EXPRESSED WRITTEN CONSENT OF SAMTEC INC.

MISC\MKTG
CIC-ZMK

520 PARK EAST BLVD. NEW ALBANY, INDIANA 47150
PHONE (812) 944-6733 P.O. BOX 1147
CODE 55322

MADE BY: PURVIS 5-3-85
CHECKED BY: L. WILLIAMS 5-15-85

ENG. APPROVAL
K. BECHT 5-15-85

CIC-XXX-XXXX-XX-X
SHEET 2 OF 2