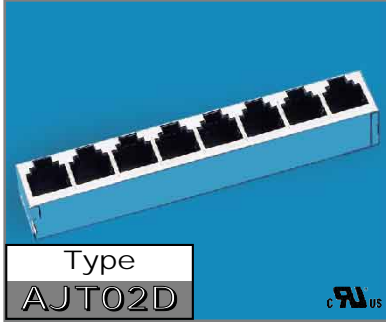


- Shielded
- Multi Port
- Thru Hole



- Side Entry
- CAT 5
- Low Profile
- 8 Positions

Type
AJT02D

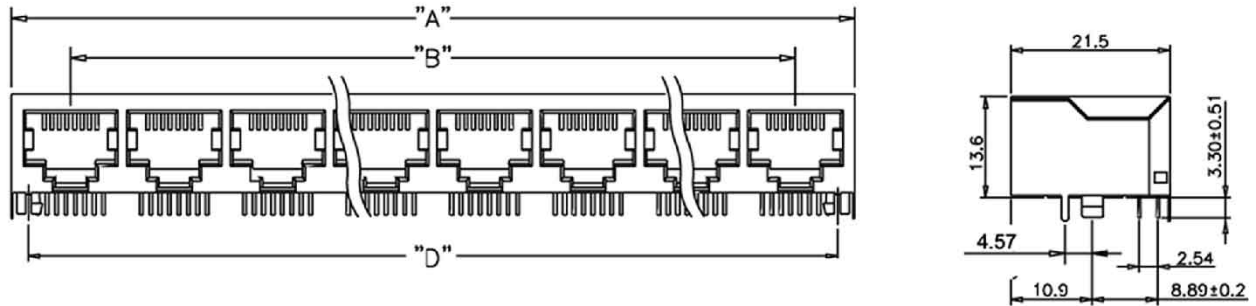


Technical Data

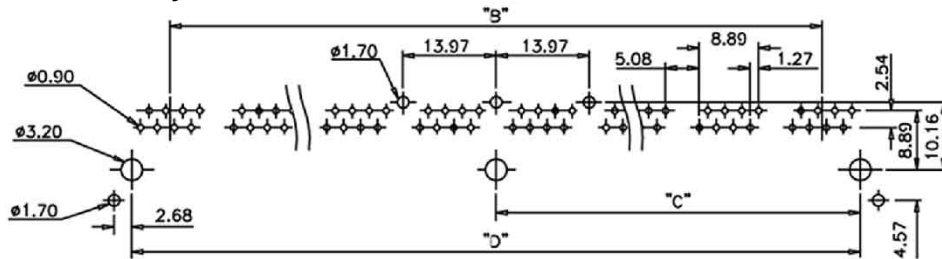
Housing: Glass filled Polyester UL94V-0. Standard color Black
Insert: Glass filled Polyester UL94V-0
Contact: 0.35mm (0.14") thickness Phosphor Bronze Alloy selective Gold plating over Nickel over Tin
Shield: 0.25mm Brass Tin-Lead plated

For electrical specifications see page 4

Dimensions (mm)



PC Board Layout



Ports	Dim "A" ±0.25	Dim "B" ±0.20	Dim "C" ±0.10	Dim "D" ±0.15
2	31.24	13.97	-----	25.40
4	59.18	41.91	-----	53.34
6	87.12	69.85	-----	81.28
8	115.06	97.79	54.61	109.22

Ordering Information

A J T 0 2 D **8 8 2 4**
 Type Style Positions Contacts Ports 2, 4, 6, 8 Plating 50u"

Ports	Order No.
2	AJT02D 8824
4	AJT02D 8844
6	AJT02D 8864
8	AJT02D 8884

Standard color: black