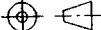

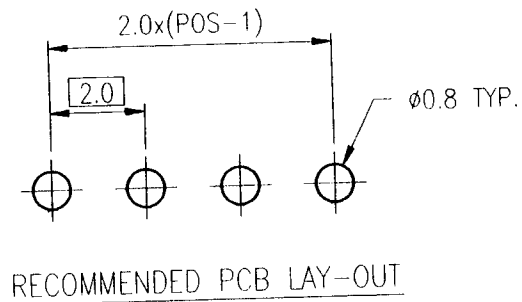


mat'l. code				tolerances unless otherwise specified				CUSTOMER COPY		BERG ELECTRONICS			
ltr	ecn no	dr	date	linear	.X ±.3			projection 	title 2.0 MINITEK HDR S/R STR				
A	K50024	JWY	9/02/95		.XX ±.13								
B	K60030	JWY	3/25/96		.XXX ±.051								
C	K60065	JWY	9/12/96	angles	0° ±2'				product family MINITEK size dwg no A4 95820				
D	K70019	JWY	3/3/97	dr	JW YANG	6/21/95							
E	K80012	BJK	05/19/98	enrg	WW LEE	6/23/95							
F	K80034	BJK	08/20/98	chr	WW LEE	6/23/95	scale 1:5	code 213 sheet 1 of 2					
				appd	SH SON	6/28/95							
sheet index	revision sheet	F 1	F 2										



NOTES.

1. MATERIAL
 - PLASTIC BODY : 15% GLASS FILLED P.B.T, UL 94V-0
 - PIN : BRASS
2. 2LBS/1 KG MIN PIN RETENTION IN EITHER DIRECTION.
3. PART NO. CONSIST OF :

95820 - W XX Y Z

PLATING CODE
 1 : 2u" GOLD FLASH
 2 : 15u" Au

NO. OF POS.(2~32)

DIM "L" - 0 : 7.5 mm
 1 : 9.5 mm
 2 : 7.8 mm

DIM "K" - A : 1.5 mm
 B : 1.8 mm
 C : 2.0 mm
 D : 2.5 mm
 E : 3.8 mm

mat'l. code				tolerances unless otherwise specified				CUSTOMER COPY		BERG ELECTRONICS			
ltr	ecn no	dr	date	linear	.X ±.3			projection		title			
F					.XX ±.13					2.0 MINITEK HDR			
					.XXX ±.051					S/R STR			
				angles	0° ±2°			mm ←→ N/S	scale	product family		code	
				dr	JW YANG	6/21/95	MINITEK			213			
				engr	WW LEE	6/23/95	size			dwg no			
				chr	WW LEE	6/23/95	A4			95820			
				appd	SH SUN	6/28/95				sheet			
sheet index	revision sheet	F	2										