

Fig. 1

- The unique compliant tail pins conform to 1,02 ±0,76 finished hole without stressing inner layers. Patent No. 4,799,904
- Series 802 pin headers are offered in two tail lengths for 1,52 - 2,54 (MM #5601) and 2,29 - 3,3 (MM #5602) thick panels. See page 178 for details.
- Series 803 sockets MM #4614 or #4615 use Hi-Rel, 6-finger BeCu #47 contacts rated at 4.5 amps. Receptacles accept 0,76 diameter pins & 0,64 square pins. See page 211 for details.
- Insulators are high temp. thermoplastic.

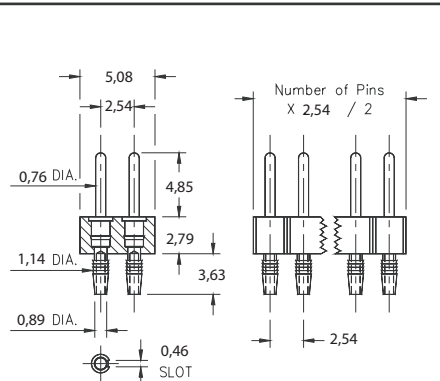
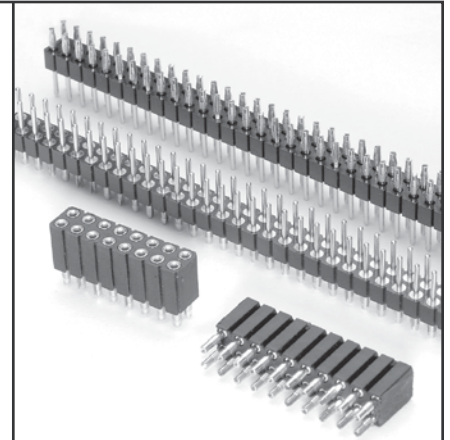


Fig. 2

Ordering Information

Fig. 1	Compliant Tail Pin Header for 1,52 - 2,54 thick boards
	802-XX-0 __ -61-001000 Specify # of pins → 02-64
Fig. 2	Compliant Tail Pin Header for 2,29 - 3,3 thick boards
	802-XX-0 __ -62-001000 Specify # of pins → 02-64

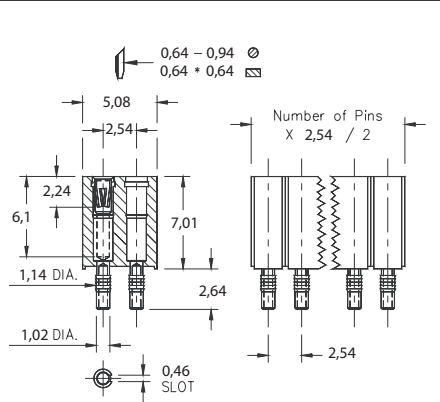


Fig. 3

RoHS 2002/95/EC

XX= Plating Code See Below

For RoHS compliance select ◊ plating code.

SPECIFY PLATING CODE XX=	10 ◊	90	40 ◊	
Pin Plating	0,25µm Au	5,08µm Sn/Pb	5,08µm Sn	

Fig. 3	Compliant Tail Socket for 1,52 - 2,54 thick boards
	803-XX-__ -61-001000 Specify # of pins → 002-100
Fig. 4	Compliant Tail Socket for 2,29 - 3,3 thick boards
	803-XX-__ -62-001000 Specify # of pins → 002-100

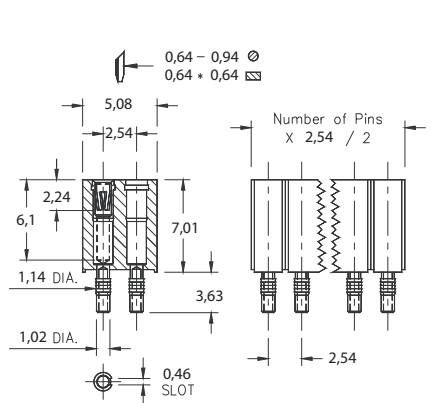


Fig. 4

RoHS 2002/95/EC

XX= Plating Code See Below

For RoHS compliance select ◊ plating code.

SPECIFY PLATING CODE XX=	13 ◊	93	99	43 ◊	44 ◊
Sleeve (Pin)	0,25µm Au	5,08µm Sn/Pb	5,08µm Sn/Pb	5,08µm Sn	5,08µm Sn
Contact (Clip)	0,76µm Au	0,76µm Au	5,08µm Sn/Pb	0,76µm Au	5,08µm Sn