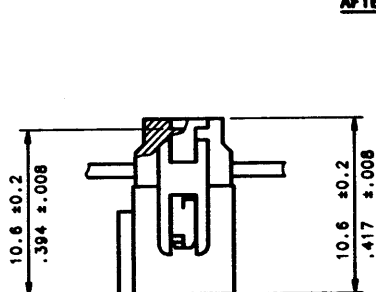
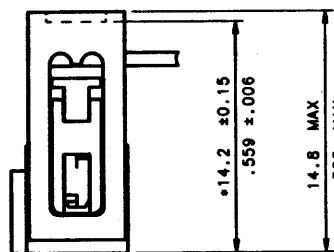


| PRODUCT NUMBER | SIZE | DIM. "A" | DIM. "B" | DIM. "C" | DIM. "S" | SLOT STYLE |
|----------------|------|-------------|-----------|-------------|-------------|-----------------|
| 77336-X04 | 2X2 | 9.54/ .376 | 2.54/ .1 | 9.46/ .372 | 5.71/ .225 | NO SLOT |
| 77336-X06 | 2X3 | 12.08/ .476 | 5.08/ .2 | 12.00/ .472 | 8.25/ .325 | RIGHT IF NO KEY |
| 77336-X08 | 2X4 | 14.62/ .576 | 7.62/ .3 | 14.54/ .572 | 10.78/ .425 | RIGHT IF NO KEY |
| 77336-X10 | 2X5 | 17.16/ .676 | 10.16/ .4 | 17.08/ .672 | 13.33/ .525 | RIGHT SLOT |
| 77336-X14 | 2X7 | 22.24/ .876 | 15.24/ .6 | 22.16/ .872 | 18.41/ .725 | RIGHT SLOT |
| 77336-X16 | 2X8 | 24.78/ .876 | 17.78/ .7 | 24.70/ .872 | 20.65/ .625 | 2 SLOTS |
| 77336-X18 | 2X9 | 27.32/1.076 | 20.32/ .8 | 27.24/1.072 | 23.40/ .925 | 2 SLOTS |
| 77336-X20 | 2X10 | 29.86/1.176 | 22.86/ .9 | 29.78/1.172 | 26.03/1.025 | 2 SLOTS |
| 77336-X24 | 2X12 | 34.94/1.376 | 27.94/1.1 | 34.86/1.372 | 31.11/1.225 | 2 SLOTS |
| 77336-X28 | 2X13 | 37.48/1.476 | 30.48/1.2 | 37.40/1.472 | 33.65/1.325 | 2 SLOTS |
| 77336-X30 | 2X15 | 42.56/1.676 | 35.56/1.4 | 42.48/1.672 | 38.73/1.525 | 2 SLOTS |
| 77336-X34 | 2X17 | 47.64/1.876 | 40.64/1.6 | 47.56/1.872 | 43.81/1.725 | 2 SLOTS |
| 77336-X40 | 2X20 | 55.26/2.176 | 48.26/1.9 | 55.18/2.172 | 51.43/2.025 | 2 SLOTS |
| 77336-X44 | 2X22 | 60.34/2.376 | 53.34/2.1 | 60.26/2.372 | 56.51/2.225 | 2 SLOTS |
| 77336-X50 | 2X25 | 67.96/2.676 | 60.96/2.4 | 67.88/2.672 | 64.13/2.525 | 2 SLOTS |
| 77336-X60 | 2X30 | 80.66/3.176 | 73.66/2.9 | 80.58/3.172 | 76.83/3.025 | 2 SLOTS |
| 77336-X64 | 2X32 | 85.74/3.376 | 78.74/3.1 | 85.66/3.372 | 81.91/3.225 | 2 SLOTS |

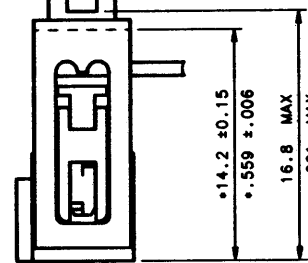
AFTER TERMINATION SIDE VIEW OF ASSEMBLY (* LATCHING DIM ON HEADER)



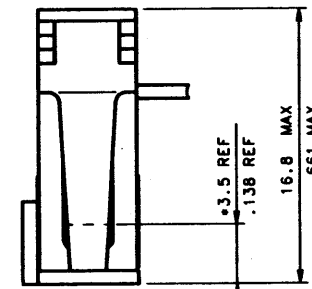
WITHOUT STRAIN RELIEF



WITH LOW PROFILE STRAIN RELIEF



WITH STANDARD STRAIN RELIEF



WITH LATCHING STRAIN RELIEF

| | | | | | | |
|-----------|---|---|---|---|---|-------------|
| 77336-7YY | | ● | | | ● | 724 |
| 77336-6YY | ● | | | | ● | 624 |
| 77336-5YY | | ● | | ● | | 504 524 530 |
| 77336-4YY | | ● | ● | | | 324 |
| 77336-3YY | | ● | | | | 204 224 230 |
| 77336-2YY | ● | | | ● | | 004 |
| 77336-1YY | ● | | ● | | | |
| 77336-0YY | ● | | ● | | | |

| PRODUCT CODE X | WITH CENTRAL KEY | WITHOUT CENTRAL KEY | STANDARD | WITHOUT | LOW PROFILE | LATCHING | DASHES NOT AVAILABLE |
|----------------|------------------|---------------------|---------------|---------|-------------|----------|----------------------|
| | | | STRAIN RELIEF | | | | |

CUSTOMER COPY FOR REFERENCE ONLY

| | | | | | | | | | | | | | | | | | | | | | | | | | | | | | | | | | |
|--|-----------------------------------|------------------------------|---------------------------------------|--------|----------|-----|---|--------|----------|-----|---|--------|----------|-----|---|--------|----------|-----|---|--------|----------|-----|---|-------|------|----|--|---------|------------|-----------|--|--|--|
| Surface 130 1302 ✓ | Tolerances 150 406 150 1101 | Scale mm inch Scale | Material code SEE SHEET 1 | | | | | | | | | | | | | | | | | | | | | | | | | | | | | | |
| Finish SEE SHEET 1 | | | Product number 77336-XXX SEE TABLE | | | | | | | | | | | | | | | | | | | | | | | | | | | | | | |
| Title EURO QUICKIE FEMALE 0.76 μm / 30 μm Au | | | Drawing number 77336 | | | | | | | | | | | | | | | | | | | | | | | | | | | | | | |
| Date Dr 94 02 10 PH2 Chr 91 10 31 PH2 Appd 94 02 10 JM PHM/VM | | | Rev 1/1 P Sheet 213 2 of 5 | | | | | | | | | | | | | | | | | | | | | | | | | | | | | | |
| <table border="1"> <tbody> <tr><td>P</td><td>F50100</td><td>93 02 07</td><td>OMA</td></tr> <tr><td>M</td><td>F40102</td><td>94 02 10</td><td>PVA</td></tr> <tr><td>L</td><td>F20308</td><td>93 03 25</td><td>PVA</td></tr> <tr><td>K</td><td>F10784</td><td>91 10 31</td><td>PVA</td></tr> <tr><td>J</td><td>F89012</td><td>89 07 17</td><td>PCL</td></tr> <tr><td>L</td><td>ECP #</td><td>Date</td><td>Dr</td></tr> </tbody> </table> | | | P | F50100 | 93 02 07 | OMA | M | F40102 | 94 02 10 | PVA | L | F20308 | 93 03 25 | PVA | K | F10784 | 91 10 31 | PVA | J | F89012 | 89 07 17 | PCL | L | ECP # | Date | Dr | <table border="1"> <tbody> <tr><td>Supp by</td><td>Supersedes</td><td>Release #</td></tr> <tr><td></td><td></td><td></td></tr> </tbody> </table> | Supp by | Supersedes | Release # | | | |
| P | F50100 | 93 02 07 | OMA | | | | | | | | | | | | | | | | | | | | | | | | | | | | | | |
| M | F40102 | 94 02 10 | PVA | | | | | | | | | | | | | | | | | | | | | | | | | | | | | | |
| L | F20308 | 93 03 25 | PVA | | | | | | | | | | | | | | | | | | | | | | | | | | | | | | |
| K | F10784 | 91 10 31 | PVA | | | | | | | | | | | | | | | | | | | | | | | | | | | | | | |
| J | F89012 | 89 07 17 | PCL | | | | | | | | | | | | | | | | | | | | | | | | | | | | | | |
| L | ECP # | Date | Dr | | | | | | | | | | | | | | | | | | | | | | | | | | | | | | |
| Supp by | Supersedes | Release # | | | | | | | | | | | | | | | | | | | | | | | | | | | | | | | |
| | | | | | | | | | | | | | | | | | | | | | | | | | | | | | | | | | |
| <table border="1"> <tbody> <tr><td>Format</td><td>A2</td></tr> </tbody> </table> | | | | Format | A2 | | | | | | | | | | | | | | | | | | | | | | | | | | | | |
| Format | A2 | | | | | | | | | | | | | | | | | | | | | | | | | | | | | | | | |

A3

A4



+ - mtec

A4

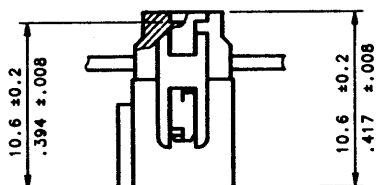
A3

| PRODUCT NUMBER | SIZE | DIM. "A" | DIM. "B" | DIM. "C" | DIM. "S" | SLOT STYLE |
|----------------|------|-------------|-----------|-------------|-------------|-----------------|
| 77336-X04M | 2X2 | 9.54/ .378 | 2.54/ .1 | 9.48/ .372 | 5.71/ .225 | NO SLOT |
| 77336-X06M | 2X3 | 12.08/ .478 | 5.08/ .2 | 12.00/ .472 | 8.25/ .325 | RIGHT IF NO KEY |
| 77336-X08M | 2X4 | 14.62/ .578 | 7.62/ .3 | 14.54/ .572 | 10.78/ .425 | RIGHT IF NO KEY |
| 77336-X10M | 2X5 | 17.18/ .678 | 10.18/ .4 | 17.08/ .672 | 13.33/ .525 | RIGHT SLOT |
| 77336-X14M | 2X7 | 22.24/ .878 | 15.24/ .6 | 22.16/ .872 | 18.41/ .725 | RIGHT SLOT |
| 77336-X16M | 2X8 | 24.78/ .978 | 17.78/ .7 | 24.70/ .972 | 20.95/ .825 | 2 SLOTS |
| 77336-X18M | 2X9 | 27.32/1.078 | 20.32/ .8 | 27.24/1.072 | 23.49/ .925 | 2 SLOTS |
| 77336-X20M | 2X10 | 29.86/1.178 | 22.86/ .9 | 29.78/1.172 | 26.03/1.025 | 2 SLOTS |
| 77336-X24M | 2X12 | 34.94/1.378 | 27.94/1.1 | 34.86/1.372 | 31.11/1.225 | 2 SLOTS |
| 77336-X28M | 2X13 | 37.48/1.478 | 30.48/1.2 | 37.40/1.472 | 33.65/1.325 | 2 SLOTS |
| 77336-X30M | 2X15 | 42.56/1.678 | 35.56/1.4 | 42.48/1.672 | 38.73/1.525 | 2 SLOTS |
| 77336-X34M | 2X17 | 47.64/1.878 | 40.64/1.6 | 47.56/1.872 | 43.81/1.725 | 2 SLOTS |
| 77336-X40M | 2X20 | 55.28/2.178 | 48.28/1.9 | 55.18/2.172 | 51.43/2.025 | 2 SLOTS |
| 77336-X44M | 2X22 | 60.34/2.378 | 53.34/2.1 | 60.26/2.372 | 56.51/2.225 | 2 SLOTS |
| 77336-X50M | 2X25 | 67.96/2.678 | 60.96/2.4 | 67.88/2.672 | 64.13/2.525 | 2 SLOTS |
| 77336-X60M | 2X30 | 80.66/3.178 | 73.66/2.9 | 80.58/3.172 | 76.83/3.025 | 2 SLOTS |
| 77336-X64M | 2X32 | 85.74/3.378 | 78.74/3.1 | 85.66/3.372 | 81.91/3.225 | 2 SLOTS |

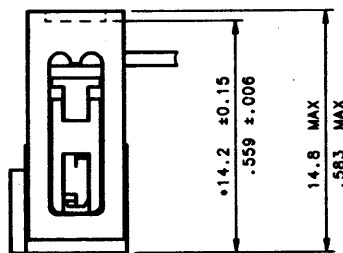
NOTE 4: DASH "M" FOR PRINTING SPECIFICATION SEE TA 803:

SEE NOTE 5

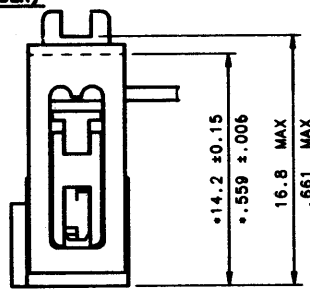
AFTER TERMINATION SIDE VIEW OF ASSEMBLY (• LATCHING DIM ON HEADER)



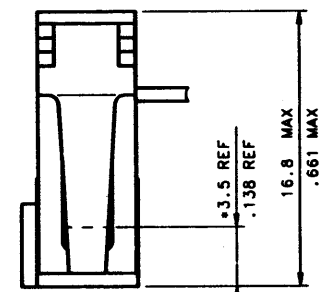
WITHOUT STRAIN RELIEF



WITH LOW PROFILE STRAIN RELIEF



WITH STANDARD STRAIN RELIEF



WITH LATCHING STRAIN RELIEF

| | | | | | | |
|------------|---|---|---|---|--|-------------|
| 77336-7YYM | | • | | | | 724 |
| 77336-6YYM | • | | | | | 624 |
| 77336-5YYM | | • | | • | | 504 524 530 |
| 77336-4YYM | | • | | • | | 324 |
| 77336-3YYM | | • | • | | | 204 224 230 |
| 77336-2YYM | • | | • | | | 004 |
| 77336-1YYM | • | | • | | | |
| 77336-0YYM | • | | • | | | |

| PRODUCT CODE X | WITH CENTRAL KEY | WITHOUT CENTRAL KEY | STANDARD | WITHOUT | LOW PROFILE | LATCHING | DASHES NOT AVAILABLE |
|----------------|------------------|---------------------|----------|---------|-------------|----------|----------------------|
| | | | | | | | |

CUSTOMER COPY FOR REFERENCE ONLY

| | | | | |
|--------------------------|-----------------------------------|--|------------|--|
| Surface ISO 1302 ✓ | Tolerances ISO 408 ISO 1101 | | mm inch | Material code SEE SHEET 1 |
| | | | Scale | Finish SEE SHEET 1 |
| | | | | Product number 77336-XXXM SEE TABLE |
| | | | | Title EURO QUICKIE FEMALE 0.76 μm / 30 μm Au |
| | | | | Drawing number 77336 |
| | | | | Rev ltr A |
| | | | | Sheet 213 3 of 3 |
| | | | | Supersedes |
| | | | | Release # |
| | | | | FORM A2 |

▲ A3 □

▲ A4 □



+ - mtec

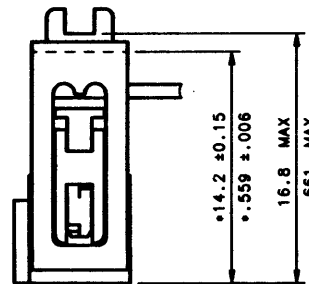
□ A4 ▲

□ A3

| PRODUCT NUMBER | SIZE | DIM. "A" | DIM. "B" | DIM. "C" | DIM. "S" |
|----------------|------|-------------|-----------|-------------|-------------|
| 77336-X10F | 2X5 | 17.16/ .676 | 10.16/ .4 | 17.08/ .672 | 13.33/ .525 |
| 77336-X14F | 2X7 | 22.24/ .876 | 15.24/ .6 | 22.16/ .872 | 18.41/ .725 |
| 77336-X18F | 2X8 | 24.78/ .976 | 17.78/ .7 | 24.70/ .972 | 20.95/ .825 |
| 77336-X20F | 2X10 | 29.88/1.178 | 22.88/ .9 | 29.78/1.172 | 26.03/1.025 |
| 77336-X26F | 2X13 | 37.48/1.478 | 30.48/1.2 | 37.40/1.472 | 33.65/1.325 |
| 77336-X30F | 2X15 | 42.56/1.676 | 35.56/1.4 | 42.48/1.672 | 38.73/1.525 |
| 77336-X34F | 2X17 | 47.64/1.876 | 40.64/1.6 | 47.56/1.872 | 43.81/1.725 |
| 77336-X40F | 2X20 | 55.26/2.178 | 48.26/1.8 | 55.18/2.172 | 51.43/2.025 |
| 77336-X50F | 2X25 | 67.96/2.676 | 60.96/2.4 | 67.88/2.672 | 64.13/2.525 |
| 77336-X60F | 2X30 | 80.66/3.178 | 73.66/2.9 | 80.58/3.172 | 76.83/3.025 |
| 77336-X64F | 2X32 | 85.74/3.376 | 78.74/3.1 | 85.66/3.372 | 81.91/3.225 |

NOTE:

5. FOR PRINTING SPECIFICATION
SEE TA 344



WITH STANDARD STRAIN RELIEF

| | | | |
|------------|--|--|--|
| 77336-JYYF | | | |
| 77336-QYYF | | | |

| PRODUCT CODE X | WITH CENTRAL KEY | WITHOUT CENTRAL KEY | STANDARD STRAIN RELIEF |
|----------------|------------------|---------------------|------------------------|
| | | | |

CUSTOMER COPY FOR REFERENCE ONLY

| | | | | |
|--------------------------|-----------------------------------|-----|---------------------|--|
| Surface 150 1302 ✓ | Tolerances 150 406 150 1101 | | mm inch Scale | Material code SEE SHEET 1 |
| | | | | Finish SEE SHEET 1 |
| | | | | Product number 77336-XXXX SEE TABLE |
| | | | | Title EURO QUICKIE FEMALE 0.76 μm / 30 μm Au |
| | | | | Drawing number 77336 |
| | | | | Rev. 111 P |
| | | | | Sheet 213 of 5 |
| P F50100 95 02 07 PHZ | | | | BERG ELECTRONICS |
| N F40102 94 02 10 PHZ | | | | |
| M F36321 93 03 26 OMA | | | | |
| L F20306 92 05 21 PVA | | | | |
| L ECP N° | Date | Dr. | Supp. by | Supersedes |
| | | | | Release N° |
| | | | | FORMAT A2 |

A3

A4

intec

A4

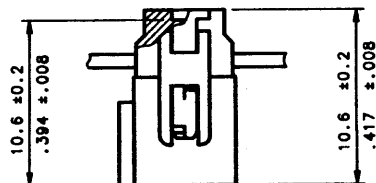
A3

| PRODUCT NUMBER | SIZE | DIM. "A" | DIM. "B" | DIM. "C" | DIM. "S" | SLOT STYLE |
|----------------|------|-------------|-----------|-------------|-------------|-----------------|
| 77336-X04T | 2X2 | 9.54/ .376 | 2.54/ .1 | 9.48/ .372 | 5.71/ .225 | NO SLOT |
| 77336-X06T | 2X3 | 12.08/ .476 | 5.08/ .2 | 12.00/ .472 | 8.25/ .325 | RIGHT IF NO KEY |
| 77336-X08T | 2X4 | 14.62/ .576 | 7.62/ .3 | 14.54/ .572 | 10.78/ .425 | RIGHT IF NO KEY |
| 77336-X10T | 2X5 | 17.16/ .676 | 10.16/ .4 | 17.08/ .672 | 13.33/ .525 | RIGHT SLOT |
| 77336-X14T | 2X7 | 22.24/ .876 | 15.24/ .6 | 22.16/ .872 | 18.41/ .725 | RIGHT SLOT |
| 77336-X16T | 2X8 | 24.78/ .976 | 17.78/ .7 | 24.70/ .972 | 20.95/ .825 | 2 SLOTS |
| 77336-X18T | 2X9 | 27.32/1.076 | 20.32/ .8 | 27.24/1.072 | 23.49/ .925 | 2 SLOTS |
| 77336-X20T | 2X10 | 29.86/1.176 | 22.86/ .9 | 29.78/1.172 | 26.03/1.025 | 2 SLOTS |
| 77336-X24T | 2X12 | 34.94/1.376 | 27.94/1.1 | 34.86/1.372 | 31.11/1.225 | 2 SLOTS |
| 77336-X26T | 2X13 | 37.48/1.476 | 30.48/1.2 | 37.40/1.472 | 33.65/1.325 | 2 SLOTS |
| 77336-X30T | 2X15 | 42.56/1.676 | 35.56/1.4 | 42.48/1.672 | 38.73/1.525 | 2 SLOTS |
| 77336-X34T | 2X17 | 47.64/1.876 | 40.64/1.6 | 47.56/1.872 | 43.81/1.725 | 2 SLOTS |
| 77336-X40T | 2X20 | 55.26/2.176 | 48.26/1.9 | 55.18/2.172 | 51.43/2.025 | 2 SLOTS |
| 77336-X44T | 2X22 | 60.34/2.376 | 53.34/2.1 | 60.26/2.372 | 56.51/2.225 | 2 SLOTS |
| 77336-X50T | 2X25 | 67.96/2.676 | 60.96/2.4 | 67.88/2.672 | 64.13/2.525 | 2 SLOTS |
| 77336-X60T | 2X30 | 80.66/3.176 | 73.66/2.9 | 80.58/3.172 | 76.83/3.025 | 2 SLOTS |
| 77336-X64T | 2X32 | 85.74/3.376 | 78.74/3.1 | 85.66/3.372 | 81.91/3.225 | 2 SLOTS |

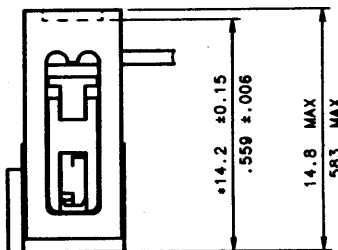
NOTE:

6 DASH "T" AT THE END OF THE PART NUMBER TO INDICATE A PACKAGING IN SHORT TUBE (TUBE LENGTH = 500 mm)

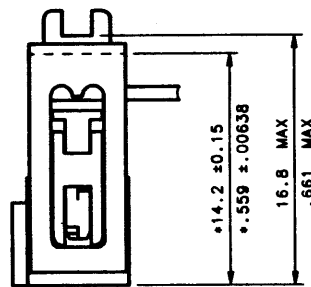
AFTER TERMINATION SIDE VIEW OF ASSEMBLY (ø LATCHING DIM ON HEADER)



WITHOUT STRAIN RELIEF



WITH LOW PROFILE STRAIN RELIEF



WITH STANDARD STRAIN RELIEF

| | | | | | | |
|------------|---|---|---|---|--|-------------|
| 77336-7YYT | | ● | | | | 724 |
| 77336-8YYT | ● | | | | | 624 |
| 77336-5YYT | | ● | | ● | | 504 524 530 |
| 77336-4YYT | | ● | | ● | | |
| 77336-3YYT | | ● | ● | | | 324 |
| 77336-2YYT | ● | | | ● | | 204 224 230 |
| 77336-1YYT | ● | | | ● | | |
| 77336-0YYT | ● | | ● | | | 004 |

| PRODUCT CODE X | WITH CENTRAL KEY | WITHOUT CENTRAL KEY | STANDARD | WITHOUT | LOW PROFILE | LATCHING | DASHES NOT AVAILABLE |
|----------------|------------------|---------------------|---------------|---------|-------------|----------|----------------------|
| | | | STRAIN RELIEF | | | | |

CUSTOMER COPY FOR REFERENCE ONLY

| | | | | |
|--------------------------|-----------------------------------|----|---------------------|--|
| Surface 130 1302 ✓ | Tolerances 130 406 130 1101 | | mm 1/16 Scale | Material code SEE SHEET 1 |
| | | | | Finish SEE SHEET 1 |
| | | | | Product number 77336-XXXX SEE TABLE |
| | | | | Title EURO QUICKIE FEMALE 0.76 μm / 30 μm Au |
| | | | | Drawing number 77336 |
| | | | | Rev. Itr P |
| | | | | Sheet 213 3 of 5 |
| P F50100 95 02 07 PN2 | | | | BERG ELECTRONICS |
| N F40102 94 02 11 PN2 | | | | Drawing number 77336 |
| M F30321 93 03 26 OMA | | | | Rev. Itr P |
| L ECP N° | Date | Dr | Supp. by | Supersedes |
| | | | | Release N° FORMAT A2 |