

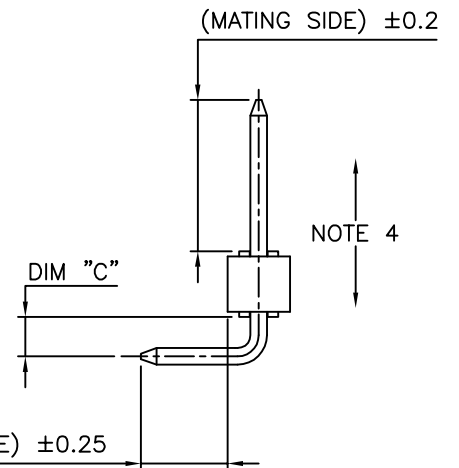
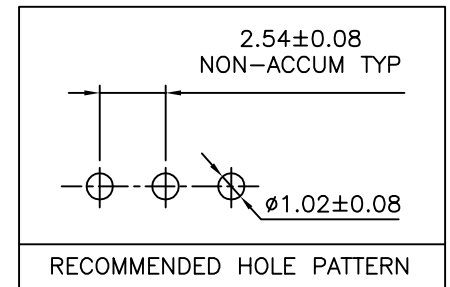
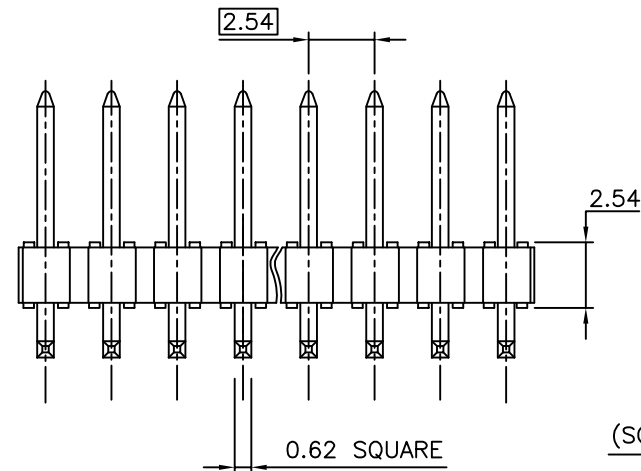
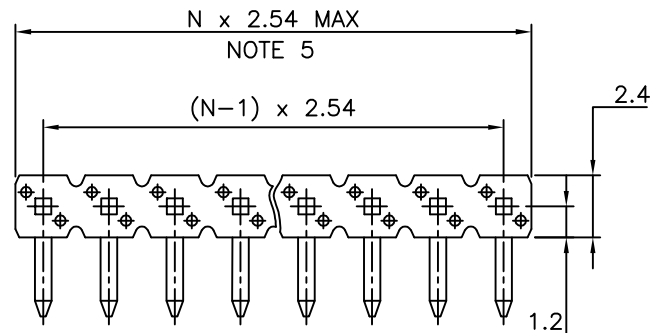
PRODUCT NUMBER




77315-YXX-XXLF

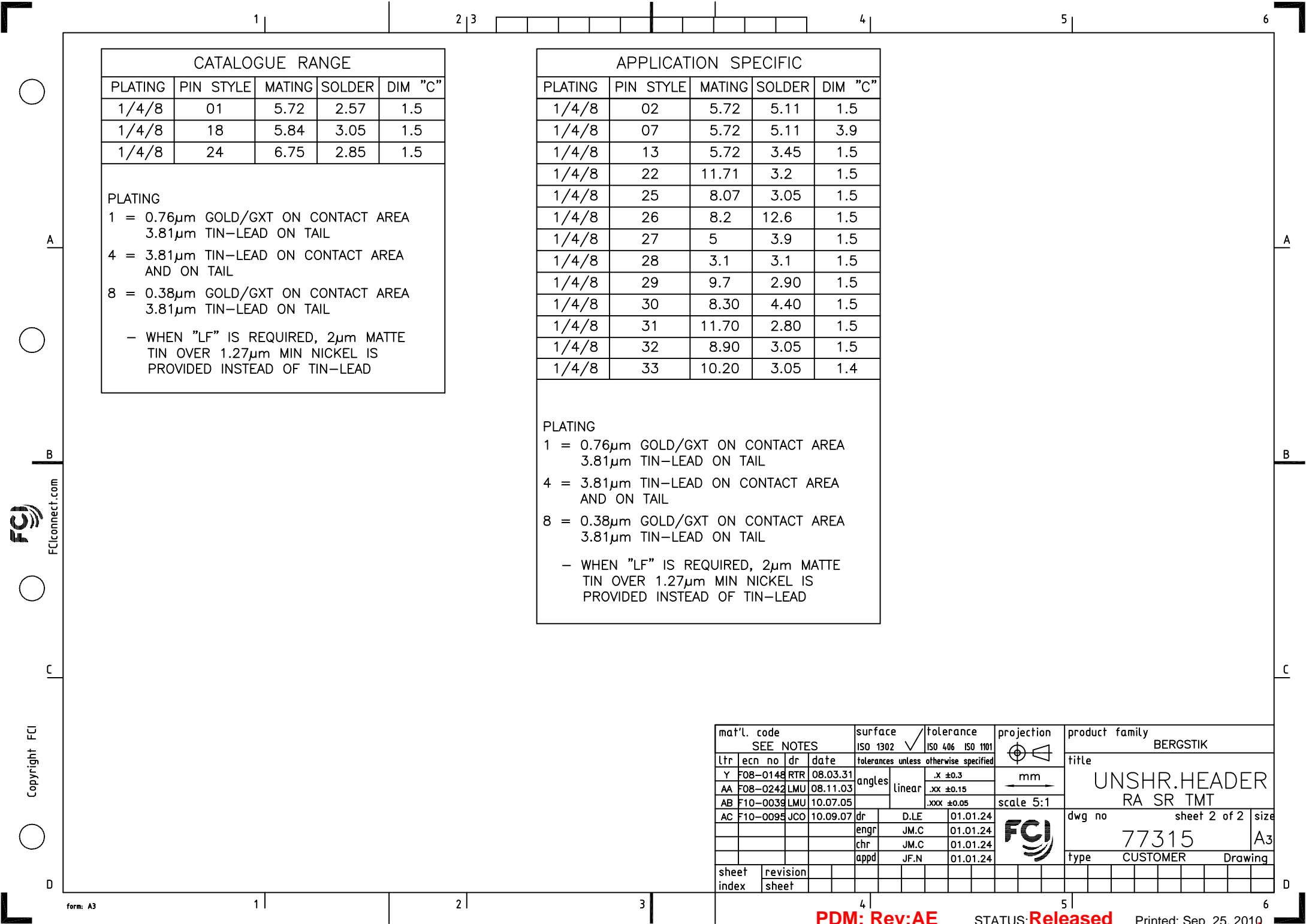
- INDICATES THE PRODUCT IS RoHS COMPATIBLE, SEE NOTE 7
- TOTAL NB OF POSITIONS 02 TO 36
- PACKAGING, NOTE 3
- PIN STYLE SEE SHEET 2
- PLATING SEE SHEET 2

NOTES:

- HOUSING MAT'L : HIGH TEMPERATURE THERMOPLASTIC. UL94V-0 COLOR: BLACK
- PIN MATERIAL : PHOSPHOR BRONZE
- PACKAGING:
 - PACKAGING POLYBAG
 - "V" BLIBOX PACK FOR VALEO
- 9N MIN RETENTION IN EITHER DIRECTION
- TO DETERMINE DIMENSIONS :
N = NUMBER OF POSITIONS PER ROW
EXAMPLE : 8 POS $N \times 2.54 = 20.32\text{mm}$
- UNDERPLATING : $1.27\mu\text{m}$ Ni MIN
- RoHS COMPATIBLE PRODUCT SPECIFICATIONS
 - PLATING:
 - "LF" MEANS THE PRODUCT IS LEAD-FREE, $2\mu\text{m}$ MINIMUM MATTE TIN OVER $1.27\mu\text{m}$ MINIMUM NICKEL UNDERPLATE.
 - MANUFACTURING PROCESS COMPATIBILITY
 - THE HOUSING WILL WITHSTAND EXPOSURE TO $260^\circ\text{C} \pm 5^\circ\text{C}$ SOLDER BATH TEMPERATURE FOR 5 SECONDS IN A WAVE SOLDER APPLICATION WITH A 1.6mm MIN THICK CIRCUIT BOARD.
 - LABELING:
 - MEETS PACKAGING SPECS AS PER GS-14-920
 - LEGAL STATEMENT: SEE GS-22-008



mat'l. code SEE NOTES				surface ISO 1302 ✓		tolerance ISO 406 ISO 1101		projection 		product family BERGSTIK			
ltr	ecn no	dr	date	tolerances unless otherwise specified				 mm	title				
AC	F08-0242	LMU	08.11.03	angles	linear	.X ±0.3			UNSHR.HEADER RA SR TMT				
AD	F10-0039	LMU	10.07.05			.XX ±0.15							
AE	F10-0095	JCO	10.09.07			.XXX ±0.05							
				dr	D.LE	01.01.24			dwg no		sheet 1 of 2	size	
				enr	JM.C	01.01.24			77315		A3		
				chr	JM.C	01.01.24							
				appd	JF.N	01.01.24			type		CUSTOMER	Drawing	
sheet index		revision sheet		AE	AC								
		1	2										



FCIconnect.com

Copyright FCI

CATALOGUE RANGE

PLATING	PIN STYLE	MATING	SOLDER	DIM "C"
1/4/8	01	5.72	2.57	1.5
1/4/8	18	5.84	3.05	1.5
1/4/8	24	6.75	2.85	1.5

PLATING

1 = 0.76µm GOLD/GXT ON CONTACT AREA
3.81µm TIN-LEAD ON TAIL

4 = 3.81µm TIN-LEAD ON CONTACT AREA
AND ON TAIL

8 = 0.38µm GOLD/GXT ON CONTACT AREA
3.81µm TIN-LEAD ON TAIL

- WHEN "LF" IS REQUIRED, 2µm MATTE
TIN OVER 1.27µm MIN NICKEL IS
PROVIDED INSTEAD OF TIN-LEAD

APPLICATION SPECIFIC

PLATING	PIN STYLE	MATING	SOLDER	DIM "C"
1/4/8	02	5.72	5.11	1.5
1/4/8	07	5.72	5.11	3.9
1/4/8	13	5.72	3.45	1.5
1/4/8	22	11.71	3.2	1.5
1/4/8	25	8.07	3.05	1.5
1/4/8	26	8.2	12.6	1.5
1/4/8	27	5	3.9	1.5
1/4/8	28	3.1	3.1	1.5
1/4/8	29	9.7	2.90	1.5
1/4/8	30	8.30	4.40	1.5
1/4/8	31	11.70	2.80	1.5
1/4/8	32	8.90	3.05	1.5
1/4/8	33	10.20	3.05	1.4

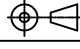
PLATING

1 = 0.76µm GOLD/GXT ON CONTACT AREA
3.81µm TIN-LEAD ON TAIL

4 = 3.81µm TIN-LEAD ON CONTACT AREA
AND ON TAIL

8 = 0.38µm GOLD/GXT ON CONTACT AREA
3.81µm TIN-LEAD ON TAIL

- WHEN "LF" IS REQUIRED, 2µm MATTE
TIN OVER 1.27µm MIN NICKEL IS
PROVIDED INSTEAD OF TIN-LEAD

mat'l. code SEE NOTES				surface ISO 1302	tolerance ISO 406 ISO 1101	projection mm	product family BERGSTIK
ltr	ecn no	dr	date	tolerances unless otherwise specified		 mm scale 5:1	title
Y	F08-0148	RTR	08.03.31	angles	linear		UNSHR.HEADER
AA	F08-0242	LMU	08.11.03				RA SR TMT
AB	F10-0039	LMU	10.07.05				
AC	F10-0095	JCO	10.09.07	dr	D.LE	01.01.24	dwg no
				enr	JM.C	01.01.24	sheet 2 of 2
				chr	JM.C	01.01.24	size
				appd	JF.N	01.01.24	A3
sheet index	revision sheet						type
							CUSTOMER Drawing

PDM: Rev:AE

STATUS:Released

Printed: Sep 25, 2010