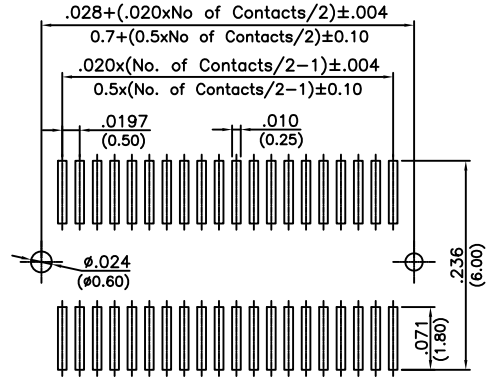
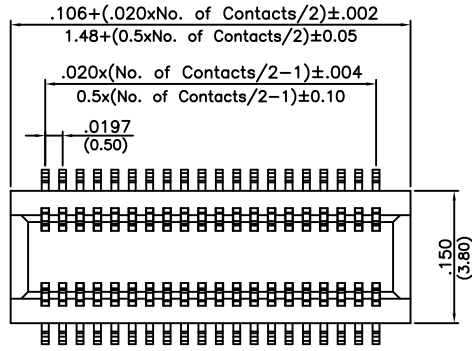
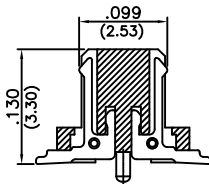
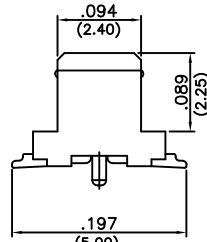
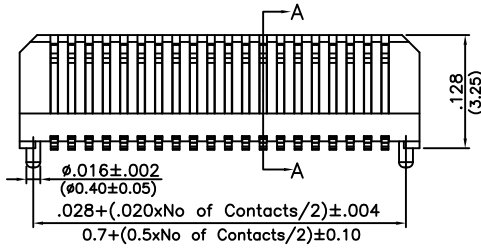


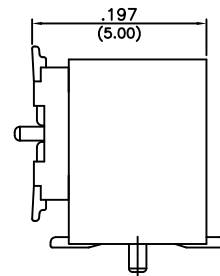
Major League Electronics .0197 cl Fine Pitch Header



Recommended P.C. Board Layout

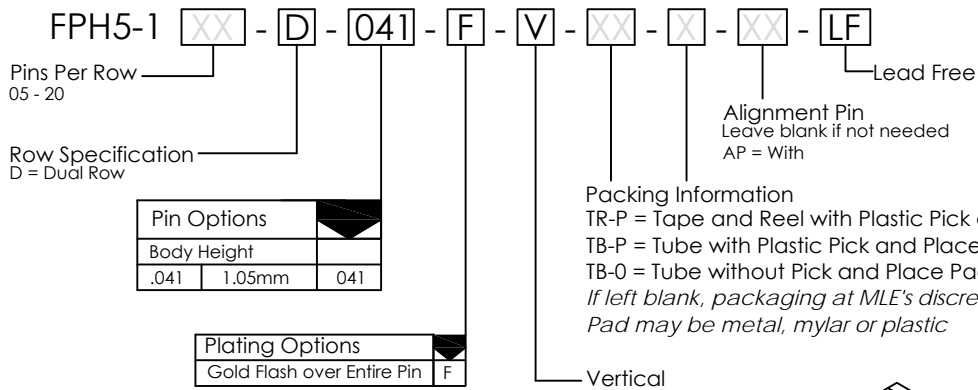


SECTION:A-A



MATING HEIGHT: .197" (5.0mm)

Ordering Information

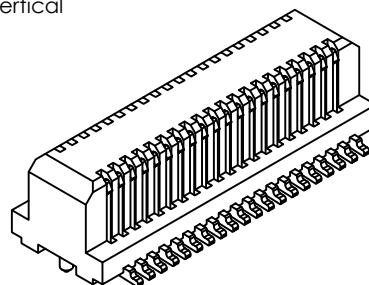


Specifications

Current Rating: 0.5 Ampere AC/DC
 Voltage Rating: 50V AC/DC
 Insulation Resistance: 100MΩ Min. @ 500V DC
 Dielectric Withstanding: 500V AC for one minute
 Contact Resistance: 50mΩ Max.
 Operating Temperature: -25°C to + 85°C
 Max. Process Temperature: 260°C up to 10 secs.

Materials

Contact Material: Phosphor Bronze
 Insulator Material: Nylon 9T, UL94V-0
 Plating: Gold Flash over entire pin



Mates With
FPSR5-1

Products cut to specific sizes are uncancelable/nonreturnable

Parts are subject to change without notice

FPH5-1 SERIES

.0197cl Dual Row - Right Angle
Surface Mount Board to Board Plug

29 MAY 09

Scale
NTS

UNLESS OTHERWISE SPECIFIED
DIMENSIONS IN INCHES (MM)
TOLERANCES ARE:

ONE PLACE DECIMALS ±.012
TWO PLACE DECIMALS ±.006
THREE PLACE DECIMALS ±.004



4235 Earnings Way, New Albany, Indiana, 47150, USA
1-800-782-3486 (USA/Canada/Mexico)

Tel: 812-944-7244

Fax: 812-944-7268

E-mail: mle@mlelectronics.com

Web: www.mlelectronics.com

Revision
B

Sheet
1/2

Revisions

Revision B - (26th April 2011)

Tolerances added for 3 decimal places, existing conversion made from MM to Inches.

Products cut to specific sizes are uncancellable/nonreturnable

Parts are subject to change without notice

FPH5-1 SERIES

.0197cl Dual Row - Right Angle
Surface Mount Board to Board Plug

29 MAY 09

Scale
NTS

UNLESS OTHERWISE SPECIFIED
DIMENSIONS IN INCHES (MM)
TOLERANCES ARE:

ONE PLACE DECIMALS ± 0.12
TWO PLACE DECIMALS ± 0.006
THREE PLACE DECIMALS ± 0.004



4235 Earnings Way, New Albany, Indiana, 47150, USA
1-800-782-3486 (USA/Canada/Mexico)

Tel: 812-944-7244
Fax: 812-944-7268

E-mail: mle@mlelectronics.com
Web: www.mlelectronics.com

Revision
B

Sheet
2/2