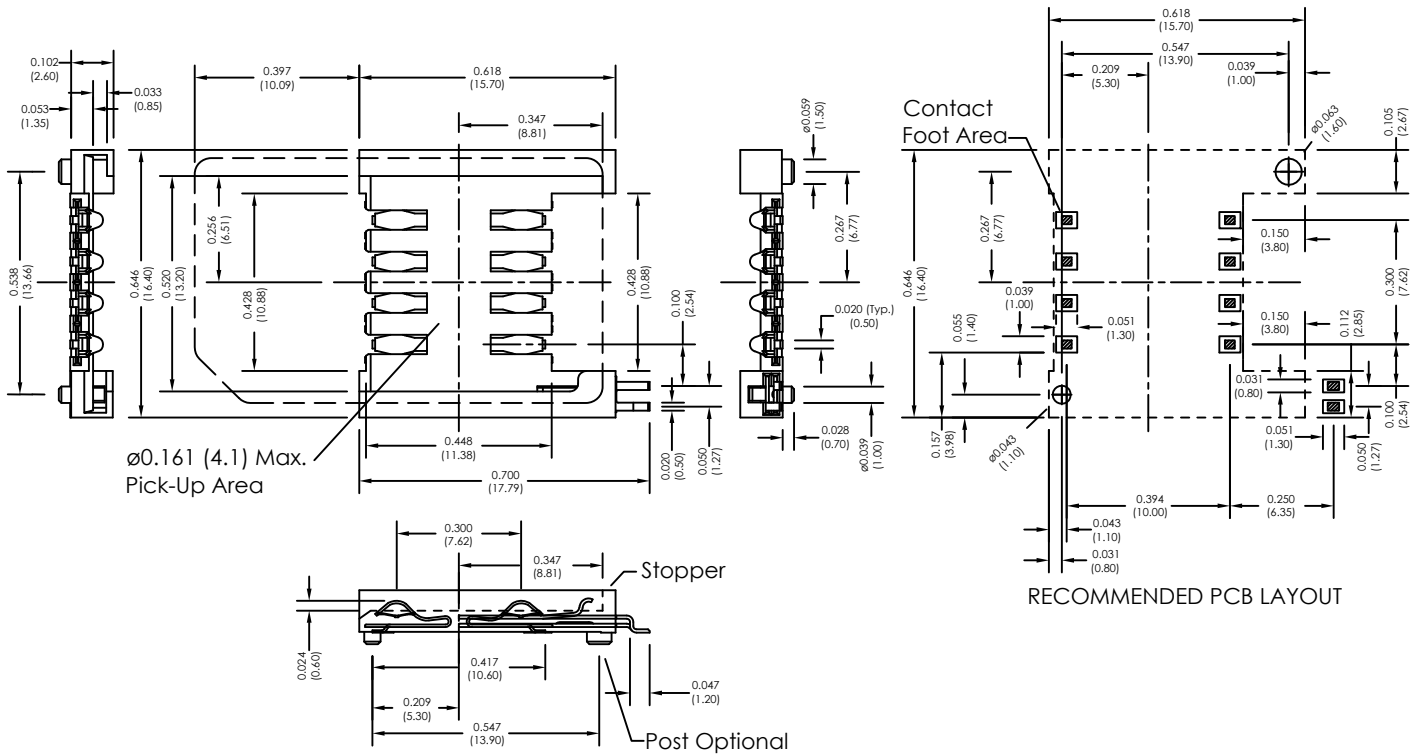


Major League Electronics 6 or 8 Pin Surface Mount SIM Connector With Switch and Optional Post



Ordering Information

SIMS15 - 26 - 2 - - - LF

Number of Contacts
6 or 8

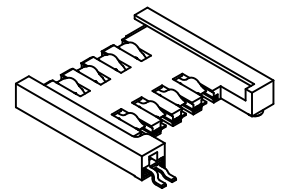
Height		
2.6mm	(0.224L x 0.646W x 0.102H inches) (5.70L x 16.40W x 2.60H mm)	26

Switch
2 = With Switch (normally open)

Lead Free

Packing Information
C = Tube
F = Reel

Locating Peg
1 = With Locating Peg
2 = Without Locating Peg



Weight:	Approx. 0.45g	Insulation Resistance:	> 1000 M Ω / 500 VDC	Operating Humidity:	10% ~ 95% RH
Contact Principle:	Friction Technology	Switch Type:	Blade	Storage Temperature:	-40°C, ~ +85°C
Operating Position:	Shaft Up/Down/Horizontal	Wave:	Not applicable	Storage Humidity:	10% ~ 95% RH
Durability:	100,000 Cycles Min.	VaporPhase:	215°C, 30 sec. Max.	Thermal Shock:	-40°C, ~ +85°C, 5 cycles
Insulation Material:	Thermoplastic, UL94V-0	IR Reflow:	230°C, 15 sec. Max.	Damp Heat:	40°C, 90% RH, 500HR
Contact Material:	Gold plating with 3u" Min.	Manual Soldering:	360°C, 3 sec. Max.	Salt-Mist:	35°C, 5% NaCl, 48HR
Contact Resistance:	50 m Ω typical / 100 m Ω Max.	Operating Temperature:	-40°C, ~ +85°C		

SIMS15 SERIES

6 or 8 Pin Surface Mount SIM Connector
With Switch and Optional Post

19 APR 07

Scale
NTS

UNLESS OTHERWISE SPECIFIED
DIMENSIONS IN INCHES (MM)

TOLERANCES ARE:

NO DECIMALS ± 0.1
ONE PLACE DECIMALS ± 0.07
TWO PLACE DECIMALS ± 0.05

ANGLES
 $\pm 0.5^\circ$

Major League
ELECTRONICS

4235 Earnings Way, New Albany, Indiana, 47150, USA

1-800-782-3486 (USA/Canada/Mexico)

Tel: 812-944-7244

Fax: 812-944-7268

E-mail: mle@mlelectronics.com

Web: www.mlelectronics.com

Revision
B

Sheet
1/2

Revisions

Revision B - (17th Jun 2010)

Plating Information added to specification
Packing Information option added; Reel

SIMS15 SERIES

6 or 8 Pin Surface Mount SIM Connector
With Switch and Optional Post

19 APR 07

Scale
NTS

UNLESS OTHERWISE SPECIFIED
DIMENSIONS IN INCHES (MM)
TOLERANCES ARE:
NO DECIMALS ±0.1
ONE PLACE DECIMALS ±0.07
TWO PLACE DECIMALS ±0.05

ANGLES
±0.5°



4235 Earnings Way, New Albany, Indiana, 47150, USA
1-800-782-3486 (USA/Canada/Mexico)
Tel: 812-944-7244
Fax: 812-944-7268
E-mail: mle@mlelectronics.com
Web: www.mlelectronics.com

Revision
B

Sheet
2/2