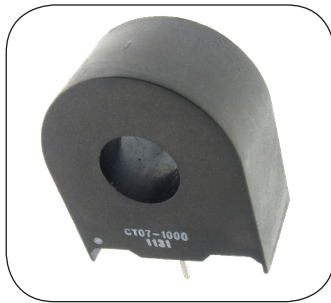


CT07-1000 Current Sense Xfmr



Features

- Rated to 200A
- PCB Mount
- Encapsulated Construction
- 40Hz to 200kHz Freq. Range

Applications

- Switching Power Supplies
- Motor Controls

Packaging

- 49 Pcs./Tray
- 12 Trays/Box
- 588 Pcs./Box

Terminating Resistor Options

I _{Pri}	Terminating Resistor	E _o
10	140	1.4
20	70	1.4
50	28	1.4
100	14	1.4
150	8	1.2
200	6	1.2

$$E-T = (E_o * 1/f)/2 \text{ (Bi-Polar Only)}$$

$$E_o = I_p * (R_b/Tr)$$

E_o = Output V I_p = Pri. Current Tr = Turns Ratio
 f = frequency R_b = Term Res.

Electrical Specifications

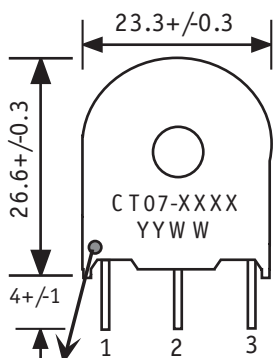
- Secondary Turns: 1,000
- Current Range: Up to 200A
- Hi-Pot: 3,750 Vac Pri:Sec (60Hz, 1mA max, 1 min)
- Operating Temp. Range: -40C to +105C
- Secondary Inductance: 8H min.
- Secondary DCR: 26 Ohms max.
- E-T Rating: 7,400 V-uSec at 100C (Bi-Polar Only)
- Electrical specifications at 25C
- Frequency Range: 40Hz to 200kHz

Material Specifications

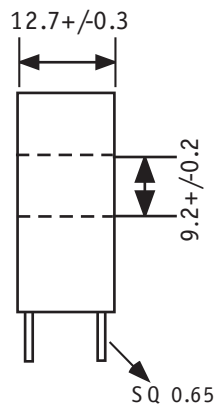
- Meets UL94V-0
- RoHS Compliant
- Material Rating: Meets requirements for UL Class A temperature rating. Ambient + Temp. Rise + Hot Spot Allowance ≤ 105C.



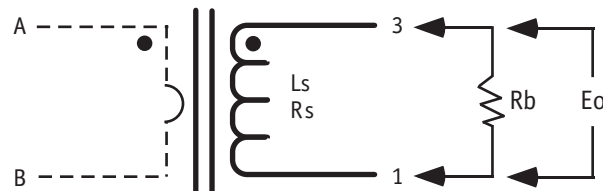
Front View



Side View



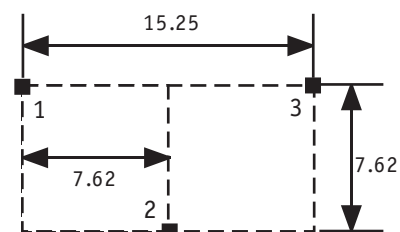
Schematic



Footprint

TOP VIEW

units: mm



CT08-1200 Current Sense Xfmr



Features

- Rated up to 50A
- PCB Mount
- High Current Density
- 40Hz to 200kHz Freq Range

Applications

- Switching Power Supplies
- Motor Controls

Packaging

- 90 Pcs./Tray
- 12 Trays/Box
- 1,080 Pcs./Box

Terminating Resistor Options

I _{Pri}	Terminating Resistor	E _o
10	80	0.667
20	40	0.667
50	16	0.667

$$E-T = (E_o * 1/f)/2 \text{ (Bi-Polar Only)}$$

$$E_o = I_p * (R_b/Tr)$$

E_o = Output V I_p = Pri. Current Tr = Turns Ratio
 f = frequency R_b = Term Res.

Electrical Specifications

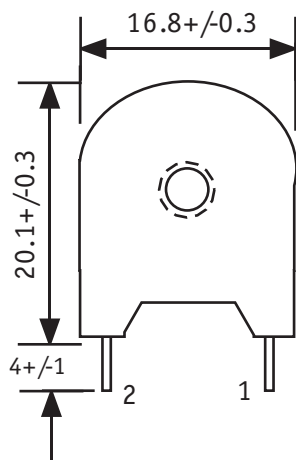
- Secondary Turns: 1,200
- Current Range: Up to 50A
- Hi-Pot: 3,750 Vac Pri:Sec (60Hz, 1mA, 1 min.)
- Operating Temp. Range: -40C to +130C
- Secondary Inductance (L_s): 10H min.
- Secondary DCR (R_s): 40 Ohms max.
- E-T Rating: 3,700 V-uSec at 100C (Bi-Polar Only)
- Electrical specifications at 25C
- Frequency Range: 40Hz to 200kHz

Material Specifications

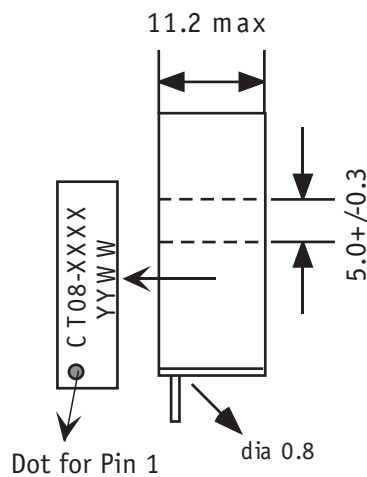
- Meets UL94V-0
- RoHS Compliant
- Material Rating: Meets requirements for UL Class B (130C) Insulation System. Ambient + Temp. Rise + Hot Spot Allowance ≤ 130C



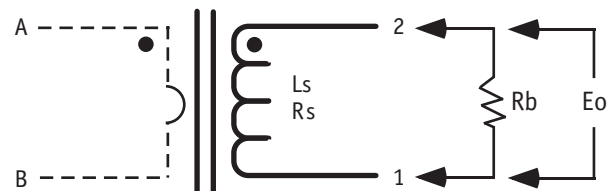
Front View



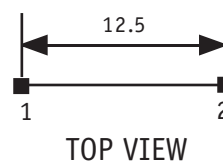
Side View



Schematic



Footprint



units: mm

Specifications subject to change without notice.