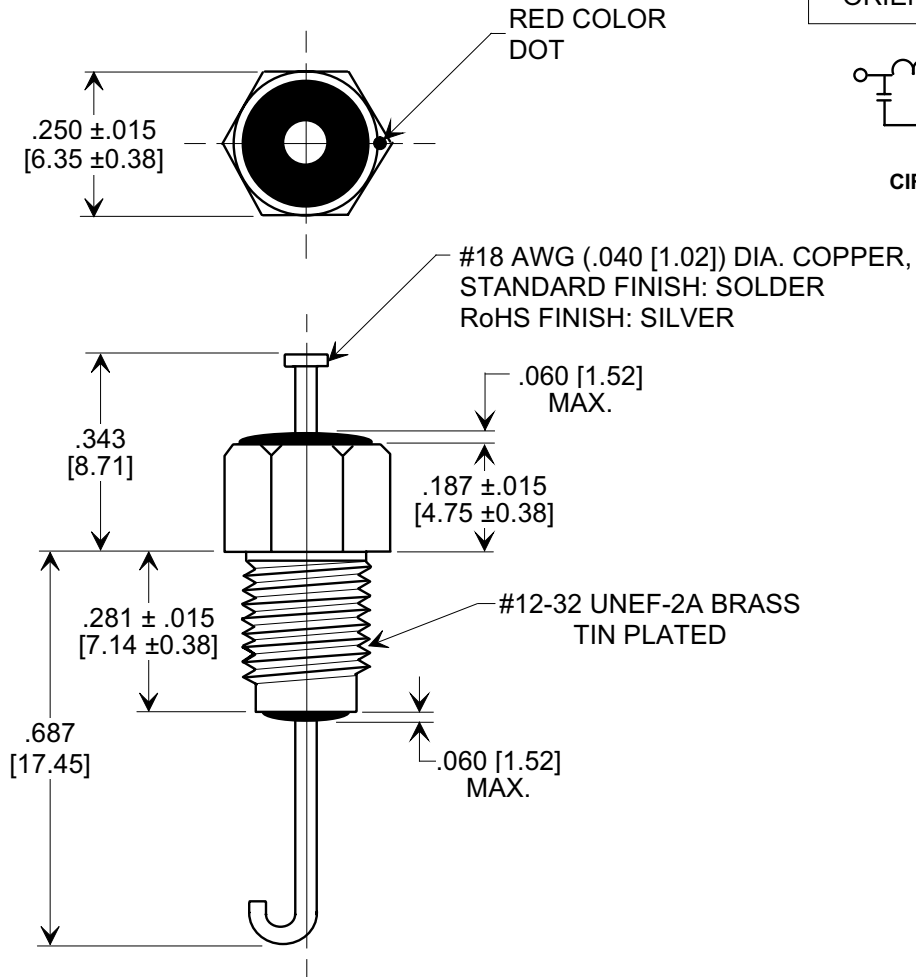
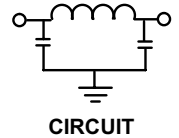
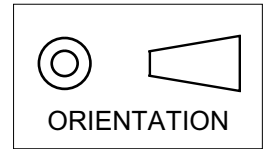


MARKETING SALES DRAWING

DIMENSIONS IN INCHES - DO NOT SCALE THIS DRAWING
DIMENSIONS IN METRIC - []

Electrical Testing
 per Tusonix standard
 test plans and Mil-Std-202
 Test Methods.



NOTES:

- SUPPLIED WITH SILVER PLATED HEX NUT AND LOCK WASHER.
- TUSONIX STANDARD PART NUMBER: 4202-065.
 TUSONIX RoHS COMPLIANT PART NUMBER: 4202-065 LF.
 CUSTOMER MUST SPECIFY STANDARD OR RoHS PART NUMBER WHEN ORDERING.
- PART MARKING: TRADEMARK AND VARIATION NUMBER ON HEX FLATS.
 STANDARD PART: BLACK INK. RoHS PART: GREEN INK.

CAP. (pF)	TOL.	WORKING VOLTAGE (VDC)		CURRENT (Idc)	I.R. MIN. @ 100 (VDC.)	DWV (VDC)	MINIMUM NO LOAD INSERTION LOSS (dB) AT 25°C PER MIL-STD -220			
		85°C	125 °C				50 MHz	100 MHz	1 GHz	10 GHz
100	± 20%	500	350	10 A	10 G	1200	3	10	45	45

X-2015 Rev-0 REVISION RECORD Original Release C.O. WAS SK 7790-000 L.E. 07-18-00 20000714-2-03 RED COLOR DOT ADDED L.E. 12-13-00 20001207-6-03 ADDED NOTES 2, 3, IR & DWV. S.M. 05-20-05 20050503-6-29	--TOLERANCES-- Unless Otherwise Specified		Title BUSHING STYLE EMI FILTER	
	DECIMAL ± .031 [0.79]		Drawn S.M. 05-23-00 Scale 3 X	
	ANGLES ±		Approved T.C. 05-23-00	
	TUSONIX TUCSON, ARIZONA		A	4202-065