

PC board connectors, rising cage clamp system

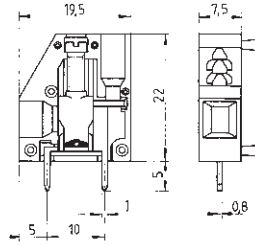
Spacing: 7.50 mm

wiecon PCB

Rated cross section:
4.0 mm²

Rated current:
30 A

Connection range:
0.14 – 6.0 mm² solid/
0.14 – 4.0 mm² fine stranded



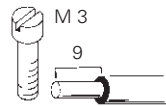
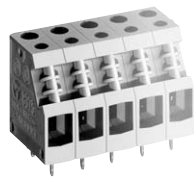
Material:

Insulating housing: PA 66/6 gray, UL 94-V-0
Clamping body: zinc-plated steel
Contact clip with solder pin:
tin-plated E copper
Clamping screw: zinc-plated steel

Rated voltages:

Spacing: 7.50 mm
500 V/6 kV/3 – Overvoltage category III
1000 V/6 kV/2 – Overvoltage category II
1000 V/6 kV/1 – Overvoltage category I

Spacing: 10.00 mm, UL 600 V, CSA 600 V
690 V/8 kV/3 – Overvoltage category III
1000 V/8 kV/2 – Overvoltage category II
1000 V/8 kV/1 – Overvoltage category I



Solder pin 0.8 x 1.0 mm
Bore hole Ø 1.3 mm

Rated voltages VDE 0110

UL ratings

CSA ratings

Approvals

field/factory wiring

Type 8375

wire horizontal to PC board

No. 22/30 – 10 AWG

No. 22 – 10 AWG

300 V 30/35 A

300 V/600 V* 30 A



		Type	Part no.	Std. pack	
Spacing: 7.50 mm					
Single poles, snap together	1pole	8375	25.700.0153.0	100	
Accessories					
Spacing: 10.00 mm					
Spacer (to increase the contact spacing from 7.50 to 10.00 mm)			07.300.2753.0	50	
Test plug, red		ST 2/2,3	Z5.553.2921.0	10	
Marking strips unmarked		9705 A/7,5/10	04.242.7553.0	25	
1 – 10, 11 – 20 usw. 991 – 999 ¹⁾ marked		9705 A/7,5/10 B	04.842.7553.0	25	
Tear-off marking strip marked. 1, 2, 3 ... 0		9704 A/1-0 B	04.841.2150.0	25	
Single tags unmarked		9705 A	04.242.0850.0	500	
		¹⁾ marked	9705 AB	04.842.0850.0	500
¹⁾ marking upon request					
* 600 V with spacer between each pole					

wiecon PCB

Rated cross section:
10 mm²

Rated current:
57 A

(related to an ambient temperature of 20°C,
the rated cross section and max. number of poles)

Connection range:

0.50 – 16.0 mm² solid/
0.50 – 10.0 mm² fine stranded

Rated voltages:

4 solder pins

250 V/4 kV/3 – Overvoltage category III

400 V/4 kV/2 – Overvoltage category III

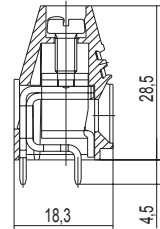
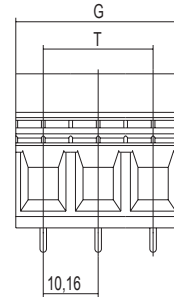
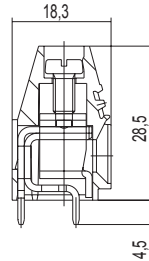
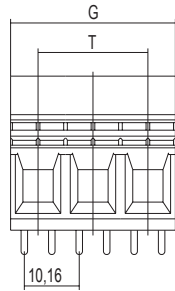
630 V/4 kV/2 – Overvoltage category II

2 solder pins

630 V/8 kV/3 – Overvoltage category III

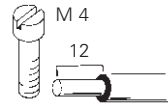
800 V/8 kV/2 – Overvoltage category III

1000 V/8 kV/2 – Overvoltage category II



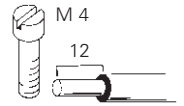
Solder pin 1.2 x 1.2 mm
Bore hole Ø 1.6 mm

4 solder pins



Solder pin 1.2 x 1.2 mm
Bore hole Ø 1.6 mm

2 solder pins



Type 7572 L4

No. 22 – 8 AWG
No. 22 – 8 AWG



Type 7572 L2

300/150 V 10/40 A
300 V 10 A

No. 22 – 8 AWG
No. 22 – 8 AWG



300/150 V 10/40 A
300 V 10 A

Rated voltages VDE 0110

UL ratings

field/factory wiring

CSA ratings

Approvals

Std. pack	G	T	Poles	Part no.	Part no.
Spacing: 10.16 mm					
50	20.32	10.16	2	27.002.0253.0	unmarked
50	30.48	20.32	3	27.002.0353.0	27.002.2253.0 27.002.2353.0

wiecon

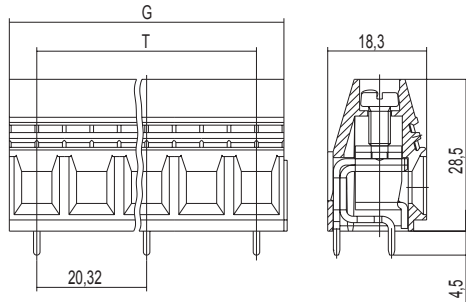
Rated cross section:
10 mm²

Rated current:
57 A

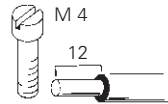
(related to an ambient temperature of 20°C,
the rated cross section and max. number of poles)

Connection range:
0.50 – 16.0 mm² solid/
0.50 – 10.0 mm² fine stranded

Rated voltages:
1000 V/8 kV/3 – Overvoltage category III



Solder pin 1.2 x 1.2 mm
Bore hole Ø 1.6 mm



Type 7572 L2

Rated voltages VDE 0110

CSA
Approvals

No. 22 – 6 AWG

600 V 60 A



Std. pack	G	T	Poles	Part no.
Spacing: 20.32 mm				
50	30.48	20.32	2	unmarked
50	50.64	40.48	3	27.002.4253.0 27.002.4353.0