

**PLEASE CHECK WWW.MOLEX.COM FOR LATEST PART INFORMATION**

**Part Number:** [0430200801](#)  
**Status:** **Active**  
**Overview:** Micro-Fit, 3.0™  
**Description:** 3.00mm (.118") Pitch Micro-Fit 3.0™ Plug Housing, Dual Row, without Panel Mount Ears, 8 Circuits

**Documents:**

[3D Model](#) [Product Specification PS-43045 \(PDF\)](#)  
[Drawing \(PDF\)](#) [RoHS Certificate of Compliance \(PDF\)](#)

**Agency Certification**

CSA LR19980  
TUV R72081037

**General**

Product Family Crimp Housings  
Series [43020](#)  
Comments Glow Wire Equivalent Part Number [430200809](#)  
Overview Micro-Fit, 3.0™  
Product Literature Order No USA-106  
Product Name Micro-Fit 3.0™

**Physical**

Circuits (maximum) 8  
Circuits Detail 8  
Color - Resin Black  
Flammability 94V-0  
Gender Male  
Glow-Wire Compliant No  
Lock to Mating Part Yes  
Material - Resin Polyester  
Number of Rows 2  
Packaging Type Bag  
Panel Mount No  
Pitch - Mating Interface (in) 0.118 In  
Pitch - Mating Interface (mm) 3.00 mm  
Pitch - Term. Interface (in) 0.118 In  
Pitch - Term. Interface (mm) 3.00 mm  
Polarized to Mating Part Yes  
Stackable No  
Temperature Range - Operating -40°C to +105°C

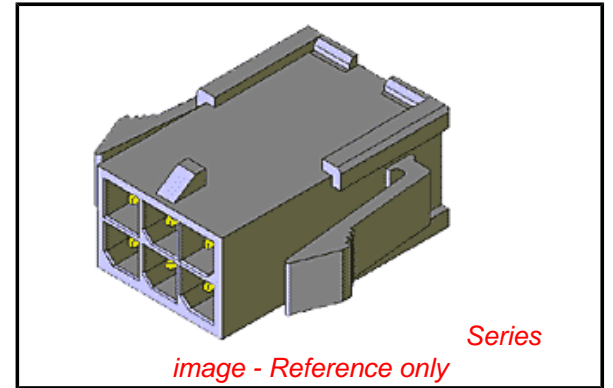
**Electrical**

Current - Maximum per Contact 5A

**Material Info**

**Reference - Drawing Numbers**

Product Specification PS-43045, RPS-43045-003, RPS-43045-004  
Sales Drawing SDA-43020-\*\*\*\*



**EU RoHS**

**ELV and RoHS Compliant**  
**REACH SVHC**  
Not Reviewed  
**Halogen-Free Status**

**China RoHS**



**Not Halogen-Free**

**Need more information on product environmental compliance?**

Email [productcompliance@molex.com](mailto:productcompliance@molex.com)  
For a multiple part number RoHS Certificate of Compliance, [click here](#)

Please visit the [Contact Us](#) section for any non-product compliance questions.

**Search Parts in this Series**

[43020Series](#)

**Mates With**

[43025 Micro-Fit 3.0™ Receptacle Housing](#)

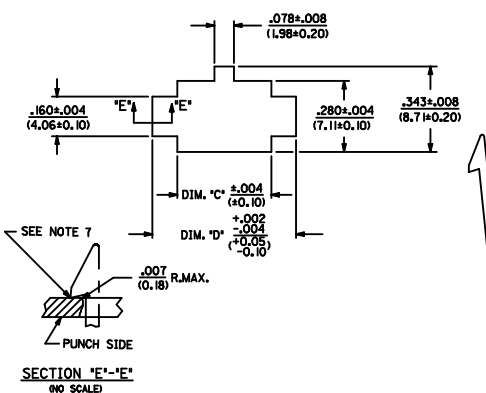
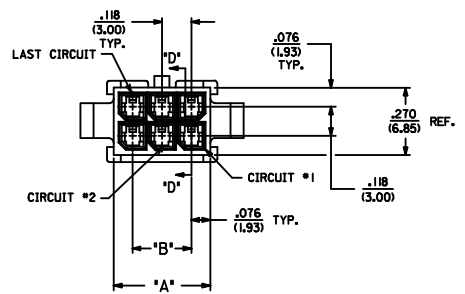
**Use With**

[Micro-Fit 3.0™ Crimp Terminal, Male](#)

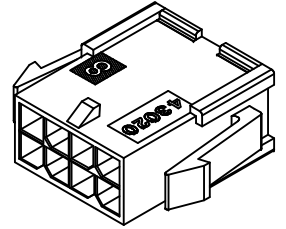
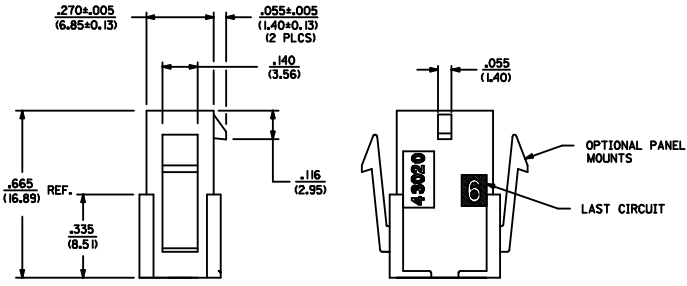
| ASSEMBLY ITEM NUMBER | PART CHARACTERISTICS |                    |
|----------------------|----------------------|--------------------|
|                      | NUMBER OF POSITION   | PANEL MOUNT OPTION |
| 43020-0200           | 02                   | YES                |
| 43020-0201           | 02                   | NO                 |
| 43020-0400           | 04                   | YES                |
| 43020-0401           | 04                   | NO                 |
| 43020-0600           | 06                   | YES                |
| 43020-0601           | 06                   | NO                 |
| 43020-0800           | 08                   | YES                |
| 43020-0801           | 08                   | NO                 |
| 43020-1000           | 10                   | YES                |
| 43020-1001           | 10                   | NO                 |
| 43020-1200           | 12                   | YES                |
| 43020-1201           | 12                   | NO                 |
| 43020-1400           | 14                   | YES                |
| 43020-1401           | 14                   | NO                 |
| 43020-1600           | 16                   | YES                |
| 43020-1601           | 16                   | NO                 |
| 43020-1800           | 18                   | YES                |
| 43020-1801           | 18                   | NO                 |
| 43020-2000           | 20                   | YES                |
| 43020-2001           | 20                   | NO                 |
| 43020-2200           | 22                   | YES                |
| 43020-2201           | 22                   | NO                 |
| 43020-2400           | 24                   | YES                |
| 43020-2401           | 24                   | NO                 |

| CKT. NO. | DIM. 'A'      | DIM. 'B'      | DIM. 'C'      | DIM. 'D'      |
|----------|---------------|---------------|---------------|---------------|
| 2        | .152/(3.86)   | N/A           | .166/(4.21)   | .311/(7.90)   |
| 4        | .270/(6.85)   | .118/(3.00)   | .284/(7.21)   | .429/(10.90)  |
| 6        | .388/(9.85)   | .236/(6.00)   | .402/(10.21)  | .547/(13.89)  |
| 8        | .506/(12.85)  | .354/(9.00)   | .520/(13.21)  | .665/(16.89)  |
| 10       | .624/(15.85)  | .472/(12.00)  | .638/(16.21)  | .783/(19.89)  |
| 12       | .742/(18.85)  | .591/(15.00)  | .756/(19.21)  | .901/(22.89)  |
| 14       | .860/(21.85)  | .709/(18.00)  | .874/(22.20)  | 1.019/(25.88) |
| 16       | .978/(24.85)  | .827/(21.00)  | .992/(25.20)  | 1.137/(28.88) |
| 18       | 1.096/(27.85) | .945/(24.00)  | 1.110/(28.20) | 1.255/(31.88) |
| 20       | 1.215/(30.85) | 1.063/(27.00) | 1.229/(31.22) | 1.373/(34.87) |
| 22       | 1.333/(33.85) | 1.181/(30.00) | 1.347/(34.22) | 1.491/(37.87) |
| 24       | 1.451/(36.85) | 1.299/(33.00) | 1.465/(37.22) | 1.609/(40.87) |

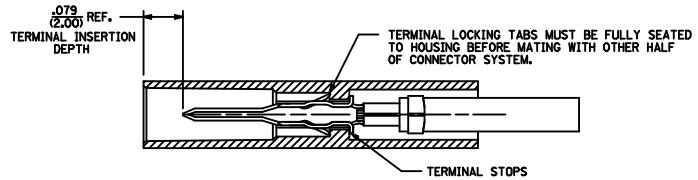
- NOTES:
- HOUSING MATERIAL: UNFILLED POLYESTER (PBT), UL 94V-0  
COLOR - BLACK
  - FINISH: N/A
  - PRODUCT SPECIFICATION: PS-43045
  - PACKAGING SPECIFICATION: N/A
  - THIS HOUSING MATES WITH MICRO-FIT RECEPTACLE #43025-\*\*\*\*
  - THIS HOUSING TO BE USED WITH MOLEX MALE TERMINAL #43031-\*\*\*\*
  - DESIGNED FOR .055(1.4) MINIMUM TO A .100(2.54) MAXIMUM THICK PANEL OR PRINTED CIRCUIT BOARD.
  - SEE SECTION 'D'-'D' FOR TERMINAL ORIENTATION IN HOUSING.
  - PANEL MOUNT FEATURES MUST LOCK ON SIDE OPPOSITE PUNCH SIDE FOR OPTIMUM RETENTION.
  - PART CONFORMS TO CLASS 'B' REQUIREMENTS OF COSMETIC SPECIFICATION PS-45499-002. SOME HOUSINGS MAY HAVE A SMALL GATE BLEMISH NEAR THE GATE LOCATION THAT DOES NOT AFFECT FUNCTIONALITY.



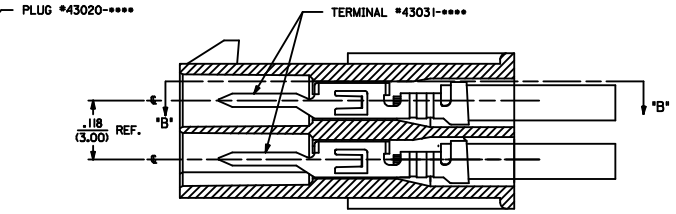
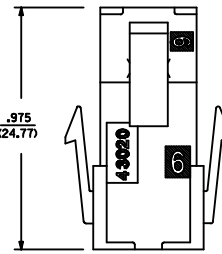
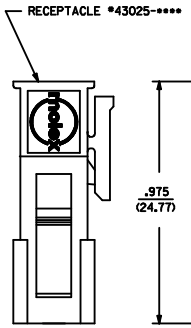
RECOMMENDED PANEL CUT-OUT



PLUG WITH OPTIONAL PANEL MOUNTS  
ISO VIEW  
(8 CIRCUIT SHOWN)



SECTION 'B'-'B'



SECTION 'D'-'D'  
WITH TERMINAL  
SCALE 8X

MATED MICRO-FIT CONNECTOR

|   |  |  |  |  |  |  |   |  |
|---|--|--|--|--|--|--|---|--|
| COSMETIC SPEC<br>ELEC. NO. UCP2009-2841<br>2/2009/05/26<br>DRINKS/SOUSEK<br>2009/05/28<br>CHYK/CHK/PPER<br>2009/05/28<br>APPROV:SMITH<br>2009/05/28<br>REV. DESCRIPTION | QUALITY SYMBOLS<br>▽=0<br>▽=0                        |  | GENERAL TOLERANCES (UNLESS SPECIFIED)<br>mm INCH<br>4 PLACES ±.010 ±.010<br>3 PLACES ±.025 ±.014<br>2 PLACES ±.035 ±.014<br>1 PLACE ±.035 ±.014<br>ANGULAR ±1/2° |  | DIMENSION STYLE<br>IN/MM<br>DRAWN BY DATE<br>AFG 1993/01/07<br>CHECKED BY DATE<br>BAP 1993/01/07<br>APPROVED BY DATE<br>RAS 1993/01/07 |  | SCALE<br>4:1<br>DESIGN UNITS<br>METRIC<br>THIRD ANGLE PROJECTION          |  |
|   | DRAFT WHERE APPLICABLE MUST REMAIN WITHIN DIMENSIONS |  | MATERIAL NO.<br>SEE CHART  |  | DOCUMENT NO.<br>SDA-43020-****   |  | TITLE<br>MICRO-FIT(3.0) 2 THRU 24 CIRCUIT PLUG WITH OPTIONAL PANEL MOUNTS |  |
|   | MOLEX INCORPORATED                                   |  | SHEET NO.<br>1 OF 1  |  | THIS DRAWING CONTAINS INFORMATION THAT IS PROPRIETARY TO MOLEX INCORPORATED AND SHOULD NOT BE USED WITHOUT WRITTEN PERMISSION          |  | MOLEX INCORPORATED  |  |
|   |  |  |  |  |  |  |   |  |