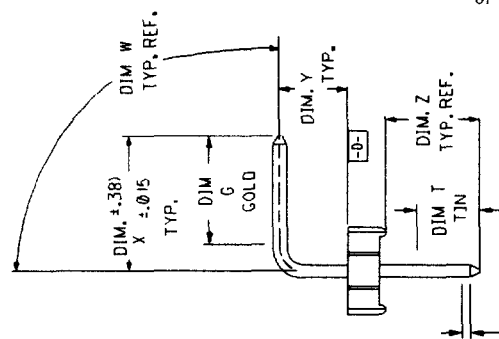
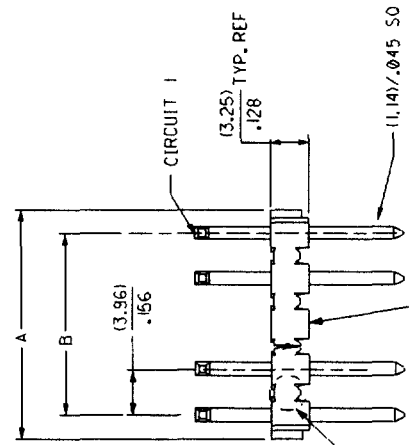
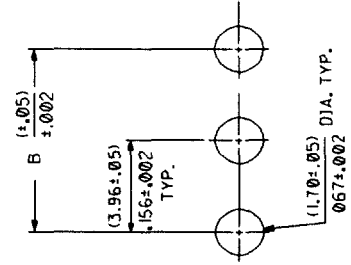


(1.3) CENTERLINE OF PIN IN AREA SHOWN
 .05
 NOT TO VARY FROM CENTERLINE OF
 PIN AT DATUM -D- BY MORE THAN
 .008 IN ANY DIRECTION



(1.3) CENTERLINE OF PIN IN AREA SHOWN
 .05
 NOT TO VARY FROM CENTERLINE OF
 PIN AT DATUM -D- BY MORE THAN
 .005 IN ANY DIRECTION



PCB LAYOUT: COMPONENT SIDE
 RECOMMENDED PCB THICKNESS:
 11.57 ±.017 / .062 ±.007

B	A	CIRCUIT
(3.96)	(6.78 / 7.87)	1
.156	.267 / .310	2
(7.92)	(10.74 / 11.84)	3
.312	.423 / .466	4
(11.89)	(14.71 / 15.80)	5
.468	.579 / .622	6
(15.85)	(18.67 / 19.76)	7
.624	.735 / .778	8
(19.81)	(22.63 / 23.72)	9
.780	.891 / .934	10
(23.77)	(26.59 / 27.69)	11
.936	1.047 / 1.090	12
(27.74)	(30.56 / 31.65)	13
1.092	1.203 / 1.246	14
(31.70)	(34.52 / 35.61)	15
1.248	1.359 / 1.402	16
(35.66)	(38.48 / 39.57)	17
1.404	1.515 / 1.558	18
(39.62)	(42.44 / 43.54)	19
1.560	1.671 / 1.714	20
(43.59)	(46.41 / 47.50)	21
1.716	1.827 / 1.870	22
(47.55)	(50.37 / 51.46)	23
1.872	1.983 / 2.026	24
(51.51)	(54.33 / 55.42)	25
2.028	2.139 / 2.182	26
(55.47)	(58.29 / 59.39)	27
2.184	2.295 / 2.338	28
(59.44)	(62.26 / 63.35)	29
2.340	2.451 / 2.494	30
(63.40)	(66.22 / 67.31)	31
2.496	2.607 / 2.650	32
(67.36)	(70.18 / 71.27)	33
2.652	2.763 / 2.806	34
(71.32)	(74.14 / 75.23)	35
2.808	2.919 / 2.962	36
(75.29)	(78.11 / 79.20)	37
2.964	3.075 / 3.118	38
(79.25)	(82.07 / 83.16)	39
3.120	3.231 / 3.274	40
(83.21)	(86.03 / 87.12)	41
3.276	3.387 / 3.430	42
(87.17)	(89.94 / 91.03)	43
3.432	3.541 / 3.584	44
(91.14)	(93.85 / 94.94)	45
3.588	3.695 / 3.738	46

NOTES:

- SOLDERABILITY: WHEN PARTS ARE SOLDERED AT A TEMPERATURE OF (230°C) OR 445° F FOR 5 SECONDS EACH SOLDERED SURFACE SHALL BE A MINIMUM OF 95% COVERED WITH A SMOOTH CONTINUOUS ADHERENT COATING. FOR OTHER INFORMATION SEE SMES-152
- PIN PUSH OUT FORCE: PRIOR TO SOLDERING, A 3 LB MINIMUM FORCE (IN EITHER DIRECTION) SHALL BE REQUIRED TO PUSH THE PIN OUT OF THE HEADER.
- MATERIAL: HEADER GLASS FILLED POLYESTER, 94V-0, MOLDED BLACK
- THIS PART CONFORMS TO PRODUCT SPEC PS-08-50
- PARTS ARE STACKABLE END TO END ON .156 CENTERS. (SPACING TABS MUST BE REMOVED ON CIRCUIT SIZES 1 THROUGH 23 BEFORE PARTS ARE STACKABLE.)

PLATING: PIN MATERIAL: BRASS FOR ADDITIONAL INFORMATION SEE SDES-88.

- TIN .000200 MIN. OVER COPPER.
- SELECT GOLD 15 M.I. MIN
 SELECT TIN/LEAD 100 M.I. MIN
 NICKEL OVERALL
- SELECT GOLD 30 M.I. MIN
 SELECT TIN/LEAD 100 M.I. MIN
 NICKEL OVERALL

REVISIONS	LTR.	DATE	BY	CHK
AF4		12-22-99	SAMJEC	

DESCRIPTION	DATE	BY	CHK
ADD/REL 0204 UCR2008-0451			
12-22-99 SAMJEC			

REV.	DATE	BY	CHK
5	AF		
4	AF		
3	AF		
2	AF4		
1	AF4		

REV.	DATE	BY	CHK
5	AF		
4	AF		
3	AF		
2	AF4		
1	AF4		

ENG. NUMBERS	PIN NUMBER	PLT	DIM L	DIM X	DIM G GOLD	DIM Y	DIM Z	DIM T TJN	ANG. W	PACKAGING	EDP NO.	ENG. NO.	VOIDS	EDP NO.	ENG. NO.	VOIDS
A-41662-ANA102-*	2161-19102	102	(26.21) 1.032	(14.61) .575	N/A	(4.95) .195	(4.67) .184	OVERALL	90°	41679-A1						
A-41662-BNY567-*	43294-0497	567	(26.16) 1.030	(14.61) .575	(6.86) .270	(4.95) .195	(4.63) .182	(4.83) .190	90°	41679-A1						
A-41662-BNY569-*	43294-0498	569	(26.16) 1.030	(14.61) .575	(6.86) .270	(4.95) .195	(4.63) .182	(4.83) .190	90°	41679-A1						
A-41662-ANA102-*																
26-48-1022						41662-0001	-B02Y567									
26-48-1032						41662-0002	-B03Y567									
26-48-1042						41662-0003	-B04Y567									
26-48-1052						41662-0004	-B05Y567									
26-48-1062						41662-0005	-B06Y567									
26-48-1072						41662-0006	-B07Y567									
26-48-1082						41662-0007	-B08Y567									
26-48-1092						41662-0008	-B09Y567									
26-48-1102						41662-0009	-B10Y567									
26-48-1112						41662-0010	-B11Y567									
26-48-1122						41662-0011	-B12Y567									
26-48-1132						41662-0012	-B13Y567									
26-48-1142						41662-0013	-B14Y567									
26-48-1152						41662-0014	-B15Y567									
26-48-1162						41662-0015	-B16Y567									
26-48-1172						41662-0016	-B17Y567									
26-48-1182						41662-0017	-B18Y567									
26-48-1192						41662-0018	-B19Y567									
26-48-1202						41662-0019	-B20Y567									
26-48-1212						41662-0020	-B21Y567									
26-48-1222						41662-0021	-B22Y567									
26-48-1232						41662-0022	-B23Y567									
26-48-1242						41662-0023	-B24Y567									
26-50-3117			2,4,5, 8,10													
26-50-5082			3													
41662-0201			2,4,6													
41662-0202			2													
41662-0203			2													
41662-0204			3,4,7 8,11, 12													
A-41662-BNY567-*																
41662-0024						41662-0024	-B02Y569									
41662-0025						41662-0025	-B03Y569									
41662-0026						41662-0026	-B04Y569									
41662-0027						41662-0027	-B05Y569									
41662-0028						41662-0028	-B06Y569									
41662-0029						41662-0029	-B07Y569									
41662-0030						41662-0030	-B08Y569									
41662-0031						41662-0031	-B09Y569									
41662-0032						41662-0032	-B10Y569									
41662-0033						41662-0033	-B11Y569									
41662-0034						41662-0034	-B12Y569									
41662-0035						41662-0035	-B13Y569									
41662-0036						41662-0036	-B14Y569									
41662-0037						41662-0037	-B15Y569									
41662-0038						41662-0038	-B16Y569									
41662-0039						41662-0039	-B17Y569									
41662-0040						41662-0040	-B18Y569									
41662-0041						41662-0041	-B19Y569									
41662-0042						41662-0042	-B20Y569									
41662-0043						41662-0043	-B21Y569									
41662-0044						41662-0044	-B22Y569									
41662-0045						41662-0045	-B23Y569									
41662-0046						41662-0046	-B24Y569									
A-41662-BNY569-*																
AD1	SEE SHEET 1															
AC1	SEE SHEET 1															
AB3	SEE SHEET 1															
R1	SEE SHEET 1															
R	SEE SHEET 1															
P	SEE SHEET 1															
N	SEE SHEET 1															
LTR	REVISIONS															

ALL PARTS WITHOUT VOIDS ON THIS SHEET ARE STANDARD PRODUCT

REVISE ONLY ON CAD SYSTEM
 BREAKAWAY HEADER ASSEMBLY
 .156(FLAT RIGHT ANGLE
 41662 SERIES DWG.
MOLEX INCORPORATED
 PART NO. 111.041.0003
 DATE 08/08/85
 SEE CHART
 SDA-41662
 54166512

DESIGNING ENGINEER	DATE
CHECKED	DATE
APPROVED	DATE
DATE	DATE

REV. NO.	DESCRIPTION
1	ISSUED FOR FABRICATION
2	ISSUED FOR FABRICATION
3	ISSUED FOR FABRICATION
4	ISSUED FOR FABRICATION
5	ISSUED FOR FABRICATION

REV. NO.	DESCRIPTION
1	ISSUED FOR FABRICATION
2	ISSUED FOR FABRICATION
3	ISSUED FOR FABRICATION
4	ISSUED FOR FABRICATION
5	ISSUED FOR FABRICATION

REV. NO.	DESCRIPTION
1	ISSUED FOR FABRICATION
2	ISSUED FOR FABRICATION
3	ISSUED FOR FABRICATION
4	ISSUED FOR FABRICATION
5	ISSUED FOR FABRICATION

REV. NO.	DESCRIPTION
1	ISSUED FOR FABRICATION
2	ISSUED FOR FABRICATION
3	ISSUED FOR FABRICATION
4	ISSUED FOR FABRICATION
5	ISSUED FOR FABRICATION

REV. NO.	DESCRIPTION
1	ISSUED FOR FABRICATION
2	ISSUED FOR FABRICATION
3	ISSUED FOR FABRICATION
4	ISSUED FOR FABRICATION
5	ISSUED FOR FABRICATION

REV. NO.	DESCRIPTION
1	ISSUED FOR FABRICATION
2	ISSUED FOR FABRICATION
3	ISSUED FOR FABRICATION
4	ISSUED FOR FABRICATION
5	ISSUED FOR FABRICATION

REV. NO.	DESCRIPTION
1	ISSUED FOR FABRICATION
2	ISSUED FOR FABRICATION
3	ISSUED FOR FABRICATION
4	ISSUED FOR FABRICATION
5	ISSUED FOR FABRICATION

