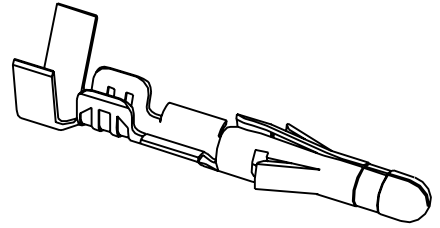
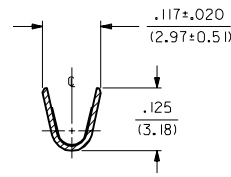
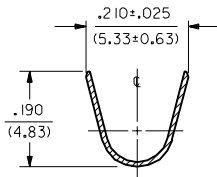
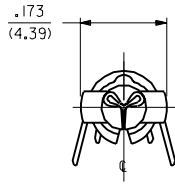
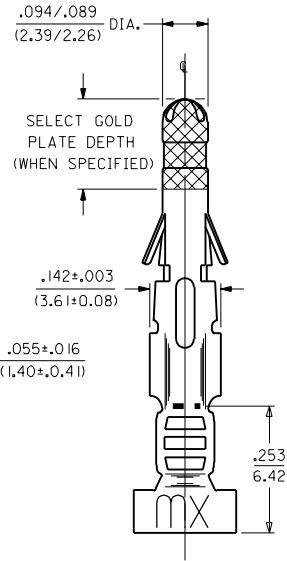
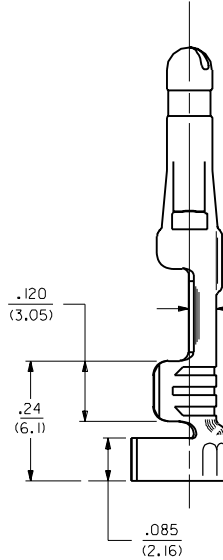
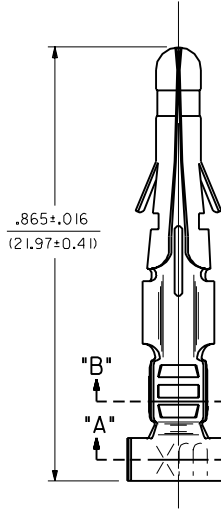


PART NO.	ENG. NO.
02-09-2103	1190-(P90)1L
02-09-2101	1190-(P90)1
02-09-2164	1190-(P914)L
02-09-2165	1190-(P914)
NOT TOOLED	1190-(563)L
02-09-6112	1190-(563)
02-09-6110	1190-(591)L
02-09-6101	1190-(591)
02-09-6109	1190-(565)L
02-09-6107	1190-(565)
02-09-6106	1190-(550)L
02-09-6100	1190-(550)
NOT TOOLED	1190-(558)L
NOT TOOLED	1190-(558)



SECT. "A-A"

SECT. "B-B"



SELECT GOLD PLATE DEPTH (WHEN SPECIFIED)

SEE NOTE A

NOTES:

- TERMINAL FOR USE WITH .093/(2.36) SERIES HOUSINGS AND WILL ACCEPT 14 THRU 20 AWG WIRE.
- INSERTION FORCE: 3.5 LBS. MAX. WHEN TERMINAL IS INSERTED INTO AN .093 SERIES HOUSING.
- RETENTION: 20 LBS. MIN. FROM HOUSING.
- THIS PART CONFORMS TO PROD. SPEC. 02-09.

△ DIMENSION FROM THE END OF THE TERMINAL TO THE END OF THE BRUSH ON THE WIRE CRIMPED INTO THE TERMINAL.

FINISH CODES:

- 901 HOT TIN DIP .000020/(0.0005) MIN.
- 914 HOT TIN-LEAD DIP .000040/(0.0010) MIN.
- 565 SELECT GOLD PLATE .000020/(0.0005) MIN. IN CONTACT AREA, OVER .000030/(0.00076) MIN. NICKEL OVERALL WITH .000010/(0.00025) MAX. GOLD FLASH OVERALL.
- 591 SELECT GOLD PLATE .000050/(0.00127) MIN. IN CONTACT AREA, OVER .000050/(0.00127) MIN. NICKEL OVERALL WITH .000010/(0.00025) MAX. GOLD FLASH OVERALL.
- 550 SELECT GOLD PLATE .000015/(0.00038) MIN. IN CONTACT AREA, OVER .000030/(0.00076) MIN. NICKEL OVERALL WITH .000010/(0.00025) MAX. GOLD FLASH OVERALL.
- 563 SELECT GOLD PLATE .000030/(0.00076) MIN. IN CONTACT AREA, .000100/(0.00254) MIN. TIN-LEAD IN CRIMP AREA OVER .000050/(0.00127) MIN. NICKEL OVERALL.
- 558 SELECT GOLD PLATE .000030/(0.00076) MIN. IN CONTACT AREA, OVER .000050/(0.00127) MIN. NICKEL OVERALL WITH .000010/(0.00025) MAX. GOLD FLASH OVERALL.

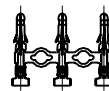
LEGEND

1190-(\*\*\*\*)\*

- P=PREPLATE BLANK=POSTPLATE
- FORM BLANK=CHAIN L=LOOSE
- FINISH CODE

MATERIAL:

CARTRIDGE BRASS, ALLOY #C26000, .010/(0.25) THICK, SPRING TEMPER.



CHAIN FORM FULL SCALE

REV.	DATE	DESCRIPTION
BR3	3/1/00	REVISED UCR2000-0583 DDS
BR2	10/26/97	REVISED UCR 1999-0518 STAMBAUGH 99-2-9
BR1	1-4-91	ADDED ISO VIEW UCR 1998-0248 WANG 98-05-20
BR		CARRIER CUTOFF ECN #U1 0223
BP		REV. & REDRAWN ECR 10480 SEP 10-26-87 RW

DIMENSIONS SHOWN METRIC ( ) INCH		UNLESS OTHERWISE SPECIFIED TOLERANCES ANGULAR ± 1/2°		REVISIONS	
INCH	METRIC	TITLE			
3 PLACE ± .010	---	CRIMP TERMINAL, MALE			
2 PLACE ± .014	± 0.25	.093/(2.36) DIA.			
1 PLACE ---	± 0.35	FOR 14 THRU 20 AWG WIRE			
DRAFT WHERE APPLICABLE MUST REMAIN WITHIN DIMENSIONS		PART NO. SD-1190		SHEET NO. 1 OF 1	
DRWG. NO. SD1190X1		FILE NAME SD1190X1		DATE 10/26/87	
DRWG. BY: CEP	DRWG. BY: RW	MOLEX INCORPORATED		REV. & REDRAWN	
APP'D: RAS	SCALE: 6:1	LITTLE ROCK, ILL. 60532 U.S.A.		SEP 10-26-87 RW	
		SEE CHART		SD-1190-*	

AMERICAN DESIGN

L.T.R. REVISIONS

THIS DRAWING CONTAINS INFORMATION THAT IS PROPRIETARY TO MOLEX INC. AND SHOULD NOT BE USED WITHOUT WRITTEN PERMISSION.

CP C