



TAI-SAW TECHNOLOGY CO., LTD.

No. 3, Industrial 2nd Rd., Ping-Chen Industrial District,
Tao-Yuan, 324, Taiwan, R.O.C.

TEL: 886-3-4690038 FAX: 886-3-4697532

E-mail: tstsales@mail.taisaw.com Web: www.taisaw.com

Approval Sheet for Product Specification

Issued Date:

Product Name: 70MHz IF SAW Filter (BW=19.5 MHz)

TST Parts No.: TB0230A

Customer Parts No.: _____

Company: _____
Division: _____
Approved by : _____
Date: _____

Checked by: Kazuma Lee 

Approval by: Francis Chen 

Date: 2008, 08, 18



TAI-SAW TECHNOLOGY CO., LTD.

No.3, Industrial 2nd Rd., Ping-Chen Industrial District, Taoyuan, Taiwan, R.O.C.

TEL: 886-3-4690038 FAX: 886-3-4697532

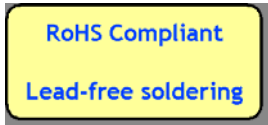
E-mail: tstsales3@mail.taisaw.com Web: www.taisaw.com

70 MHz IF SAW Filter (DIP 20.2×12.6 mm)

Model No.: TB0230A

Rev. No.:4

A. Maximum Rating:



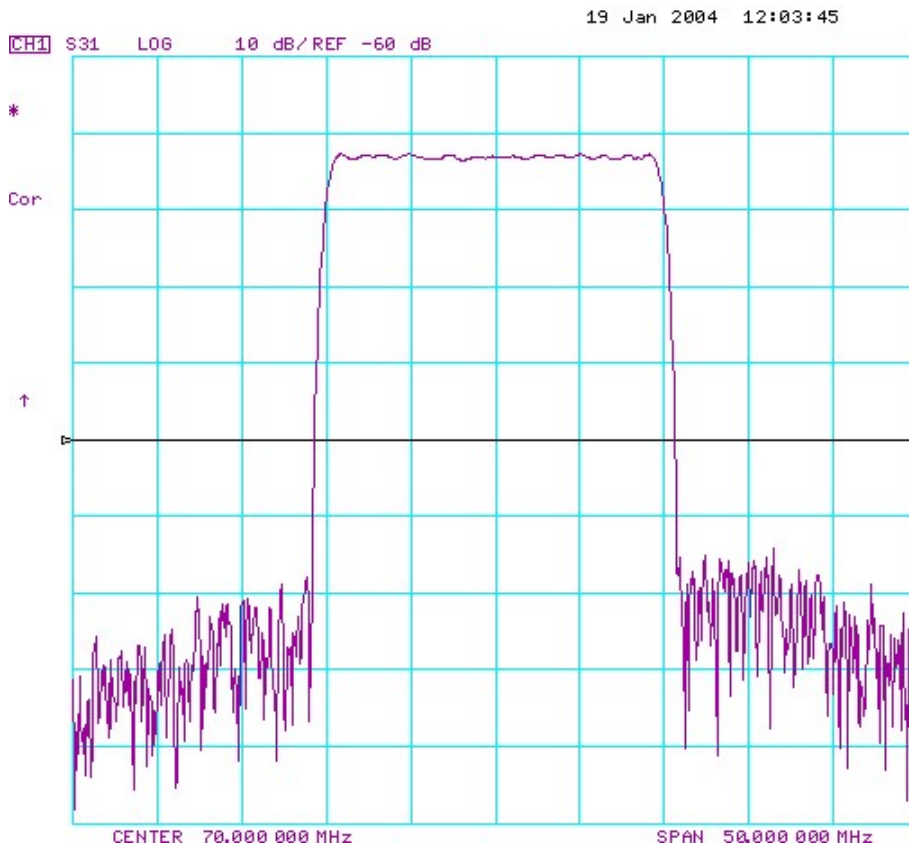
1. Input Power Level: +20 dB_m
2. Operating Temperature: -10°C to +70°C
3. Storage Temperature: -40°C to +85°C

B. Electrical Characteristics:

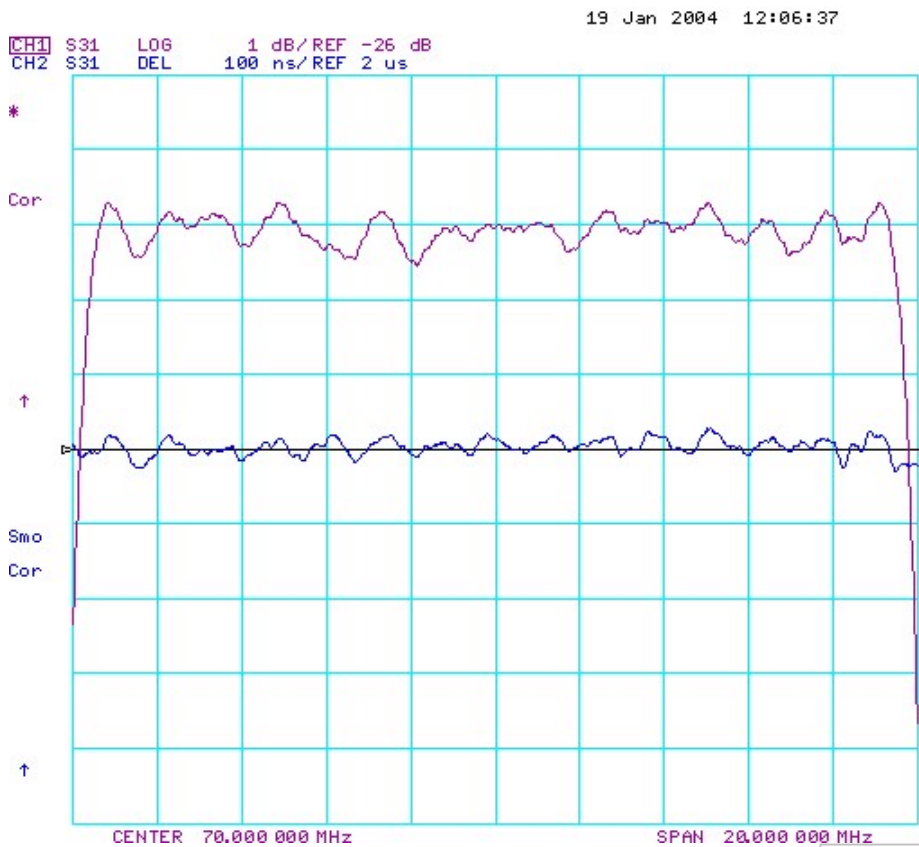
Parameters	Unit	Min.	Typical	Max.
Center frequency, F_c	MHz	69.94	70.0	70.06
Insertion Loss, IL	dB	-	24.0	26.0
1 dB Bandwidth	MHz	19.0	19.18	-
3 dB Bandwidth	MHz	19.5	19.62	-
40 dB Bandwidth	MHz	-	21.43	21.7
Relative Attenuation:				
10 to 60 MHz	dB	50	55	-
80 to 140 MHz	dB	50	55	-
Amplitude ripple within $F_c \pm 8$ MHz	dB	-	0.8	1.0
Group delay ripple within $F_c \pm 8$ MHz	nsec	-	30	80
Absolute Delay	usec	-	1.98	-
Substrate Material	-	-	LN	-

C. Frequency Characteristics:

(1) Frequency Response

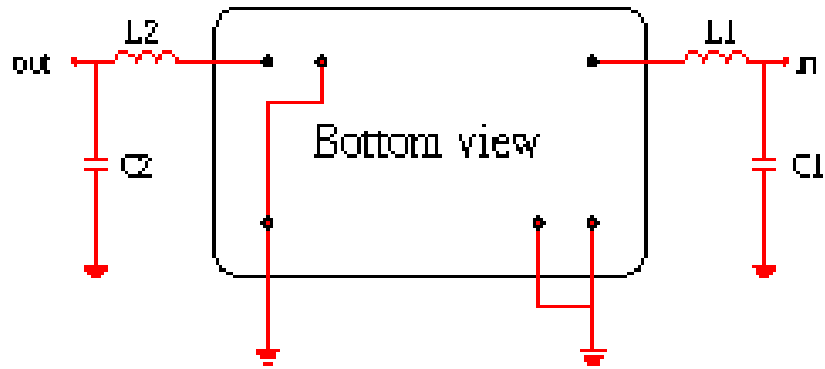


(2) Passband response and Group Delay Variation



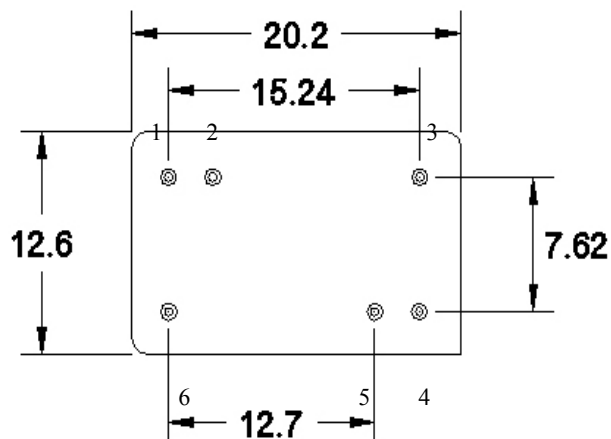
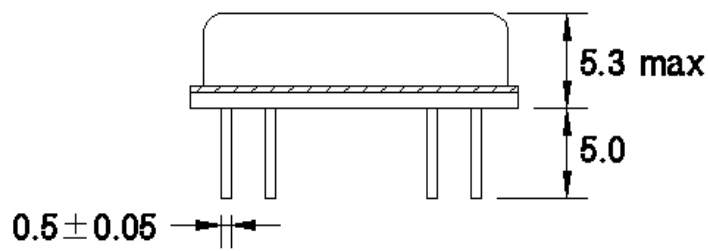
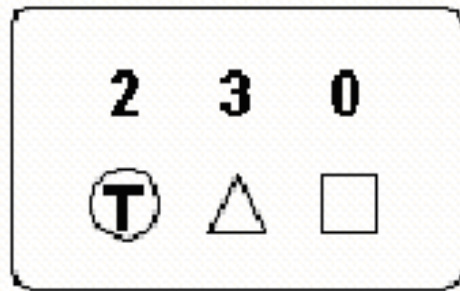
D. Measurement Circuit:

Source and load impedance: $50\ \Omega$



$L1=150\ \text{nH}$, $L2=220\ \text{nH}$, $C2=43\ \text{pF}$

E. Outline Drawing:



Pin 3: Balanced Input + or single ended input

Pin 4: Balanced Input – or single ended input ground

Pin 1: Balanced output + or single ended input output

Pin 6: Balanced output – or single ended output ground

Pin2,5: To be Ground

□ : Week Code

Unit : mm

△ : Product / Year Code

Year	2005 2009	2006 2010	2007 2011	2008 2012
Product Code	B	b	<u>B</u>	<u>b</u>