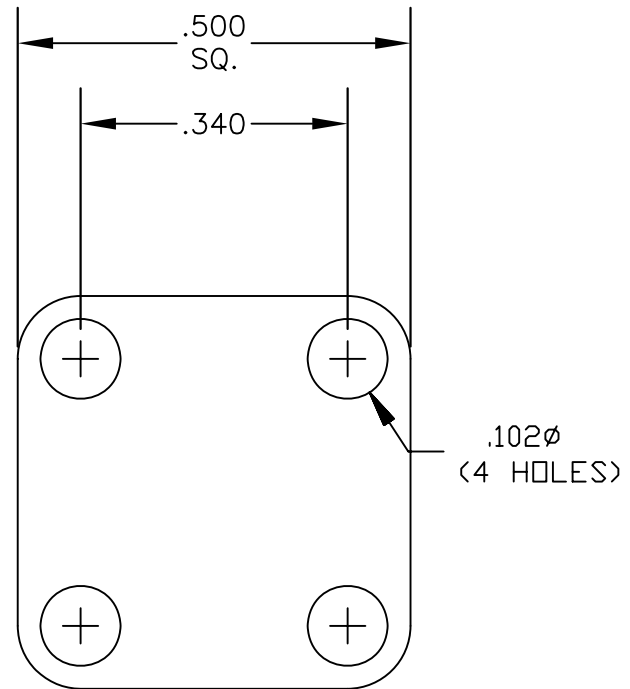
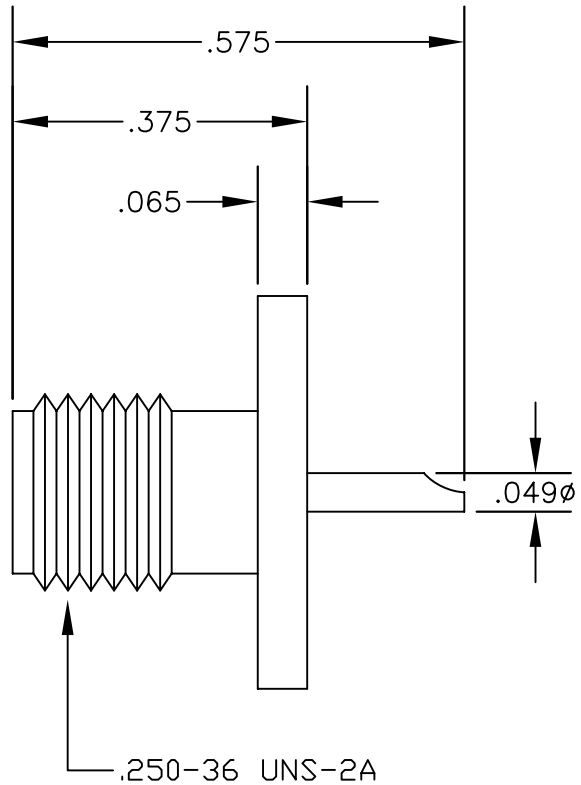


MATERIALS

| | |
|------------------|-----------------------------------|
| BODY | PASSIVATED STAINLESS STEEL |
| CONTACT | GOLD PLATED |
| INSULATOR | PTFE |



MOUNTING HOLES



PASTERNACK ENTERPRISES, INC.

P.O BOX 16759, IRVINE, CA 92623
PHONE (949) 261-1920 FAX (949) 261-7451

WEB ADDRESS: www.pasternack.com
E-MAIL ADDRESS: sales@pasternack.com

COAXIAL & FIBER OPTICS

DWG TITLE

PE4000-SF

DES.

SMA FEMALE, 4 HOLE PANEL MOUNT
SOLDER CUP CONTACT

SIZE A

FSCM NO. 53919

CAD FILE 011904

SCALE N/A

147

NOTES:

1. UNLESS OTHERWISE SPECIFIED ALL DIMENSIONS ARE NOMINAL.
2. ALL SPECIFICATIONS ARE SUBJECT TO CHANGE WITHOUT NOTICE AT ANY TIME.