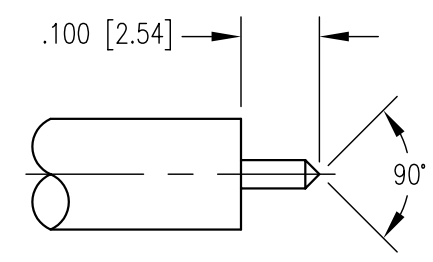
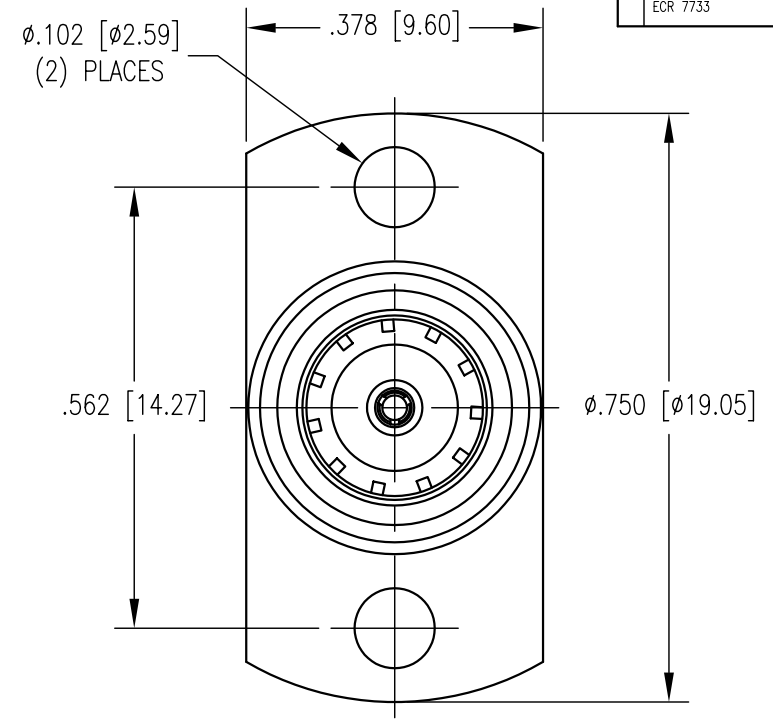
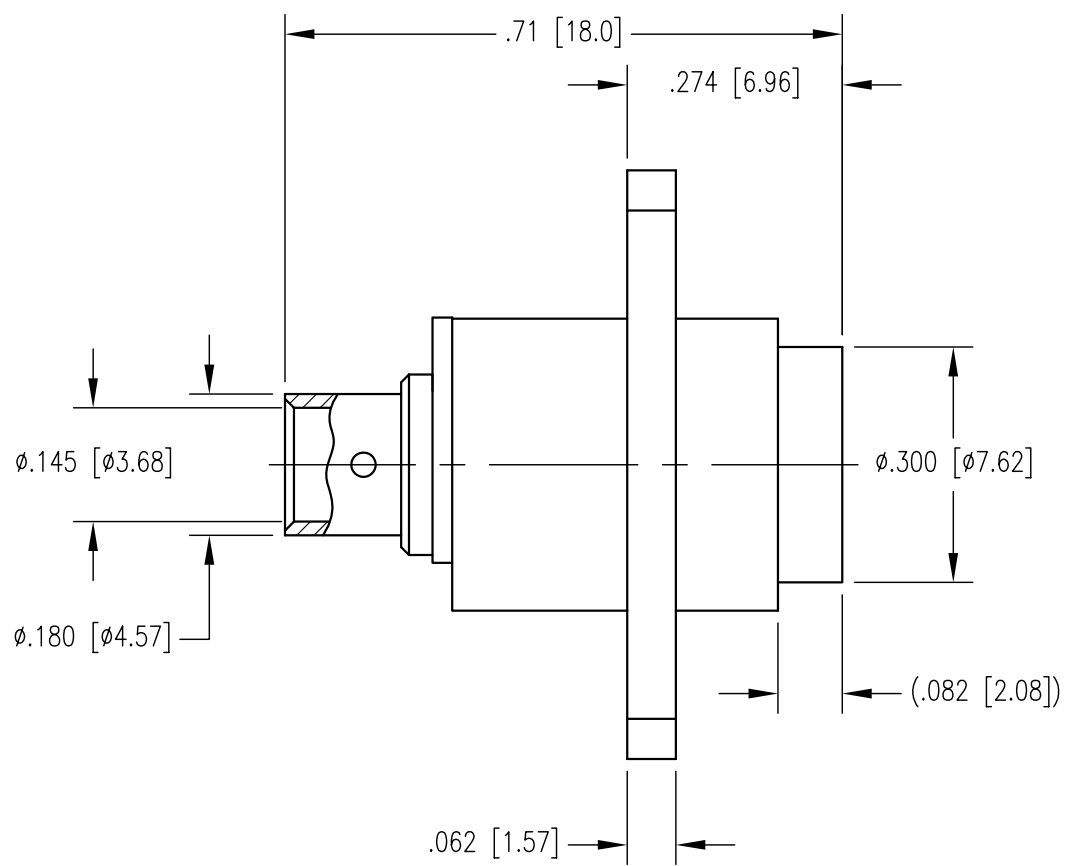


REV	DESCRIPTION	BY DATE	APPD
A	RELEASED PER ECR 7733	JED 7/8/01	JEM



CABLE TRIMMING DIMENSIONS

NOTES:

- MATERIALS:
 CENTER AND OUTER CONTACTS: COPPER ALLOY
 SPRING: MUSIC WIRE PER ASTM A228
 INSULATOR: TEFLON PER ASTM D1710
 C-RING: SPRING STEEL
 ALL OTHER METAL PARTS: BRASS PER ASTM B16
- FINISH:
 CONTACTS AND SHROUD: .000030 MIN. GOLD PER MIL-G-45204 OVER
 .000050 MIN. NICKEL PER QQ-N-290
 BODY: .000015 MIN. GOLD PER MIL-G-45204 OVER
 .000050 MIN. NICKEL PER QQ-N-290
 HOUSING: .000005 MIN. GOLD PER MIL-G-45204 OVER
 .000050 MIN. NICKEL PER QQ-N-290
 SPRING: UNPLATED
- FOR USE WITH .141 DIA. SEMI-RIGID CABLE OR EQUIVALENT.
- FOR CABLING PROCEDURES USE CAP 5-24 WITH TRIMMING DIMENSIONS SHOWN.

PER ASME Y14.5M-1994 UNLESS OTHERWISE SPECIFIED: DIMENSIONS ARE IN INCHES [MM] TOLERANCES: DECIMALS .XX ± .01 [0.254] .XXX ± .005 [0.127] ANGLES ± 2° SCALE: 4:1		NORTHROP GRUMMAN Winchester Electronics 62 Barnes Industrial Road North Wallingford, CT 06492	
CUSTOMER DRAWING		TITLE BMA 2-HOLE FLANGE MOUNT FLOATING RECEPTACLE	
DRAWN JED	DATE 9/6/01	CHECKED MJF	DATE 9/7/01
APPROVED JEM	DATE 9/6/01	APPROVED JWH	DATE 9/7/01
A		SD361-594-1410H	SHT. OF REV. 1 1 A