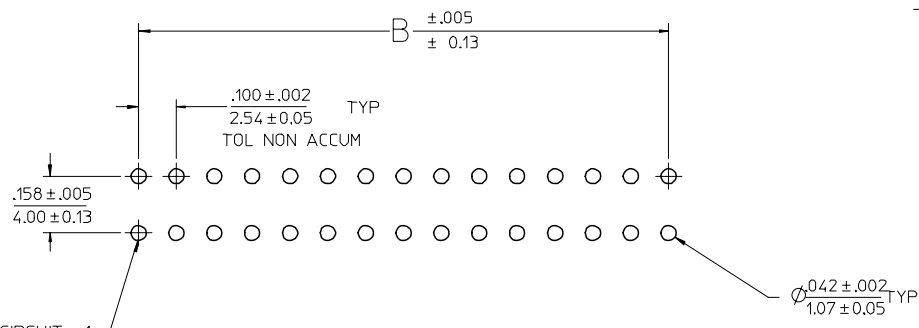
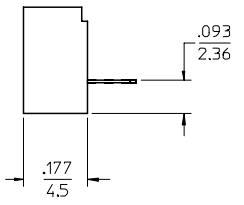
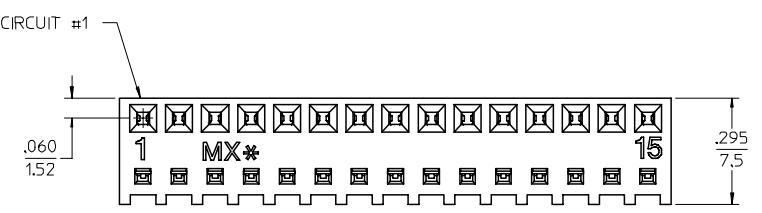
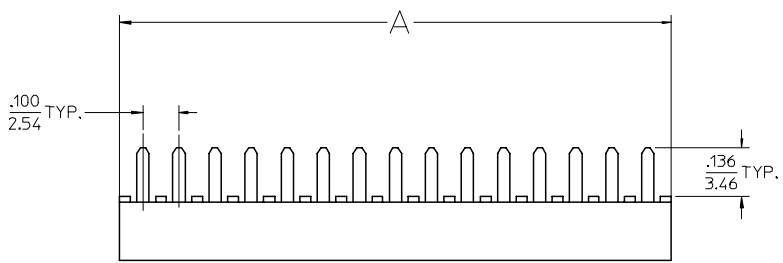
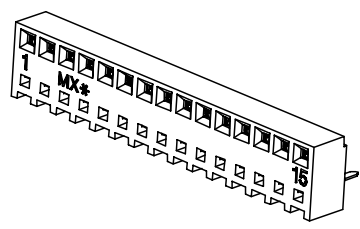


13 12 11 10 9 8 7 6 5 4 3 2 1

J  
I  
H  
G  
F  
E  
D  
C  
B  
A

J  
I  
H  
G  
F  
E  
D  
C  
B  
A

CKTS	DIM A	DIM B
2	.230 5.84	.100 2.54
3	.330 8.38	.200 5.08
4	.430 10.92	.300 7.62
5	.530 13.46	.400 10.16
6	.630 16.00	.500 12.70
7	.730 18.54	.600 15.24
8	.830 21.08	.700 17.78
9	.930 23.62	.800 20.32
10	1.030 26.16	.900 22.86
11	1.130 28.70	1.000 25.40
12	1.230 31.24	1.100 27.94
13	1.330 33.78	1.200 30.48
14	1.430 36.32	1.300 33.02
15	1.530 38.86	1.400 35.56
16	1.630 41.40	1.500 38.10



PCB LAYOUT : COMPONENT SIDE SHOWN  
RECOMMENDED PCB THK: .062/157

- NOTES :
- MATERIAL -  
HOUSING : HIGH TEMP NYLON, GLASS-FILLED, UL94V-0, COLOR - BLACK  
TERMINAL : MODIFIED TIN/BRASS ALLOY
  - FINISH - (SEE CHART)  
A-TIN: .000200/(0.00508) MINIMUM  
B-SELECT GOLD: .000015/(0.00038) MIN., SELECT TIN: .000100/(0.00254) MIN., OVER NICKEL  
C-SELECT GOLD: .000030/(0.00076) MIN., SELECT TIN: .000100/(0.00254) MIN., OVER NICKEL
- \* THE PRIMARY SHIPPING CARTON WILL BE LABELED 'COMPLIANT TO RoHS DIRECTIVE 2002/95/EC AND ELV ANNEX II OF DIRECTIVE 2000/53/EC'. CARTONS WITHOUT THIS LABEL MAY CONTAIN TIN/LEAD.
- PRODUCT SPECIFICATION : PS-44812-001
  - PACKAGING SPECIFICATION : TRAY PACK PER PK-44812-001
  - 15 CIRCUIT PART SHOWN SEE SHEET 2 FOR OTHER CIRCUIT SIZES.

UPDATE FINISH EC NO: UCP2006-2478 DRAWN/PRI/DDR 2006/03/17 CHKD:ADERR 2006/03/21 APPR:FSM/TH 2006/03/22	QUALITY SYMBOLS ▽=0 ▽=0	GENERAL TOLERANCES (UNLESS SPECIFIED)		DIMENSION STYLE IN/MM		SCALE 4:1	DESIGN UNITS INCH	THIRD ANGLE PROJECTION		
		4 PLACES ± --- ± ---	DRAWN BY MUELLER	DATE 2001/09/22	KK 100 PCB CONN ASSY LOW PROFILE					
		3 PLACES ± --- ± .010	CHECKED BY MUELLER	DATE 2001/09/23						
		2 PLACES ± 0.25 ± .015	APPROVED BY MARGULIS	DATE 2001/09/24	MOLEX INCORPORATED		DOCUMENT NO. SD-44812-001	SHEET NO. 1 OF 2		
1 PLACE ± 0.38 ± ---	DRAFT WHERE APPLICABLE MUST REMAIN WITHIN DIMENSIONS		SEE CHART		THIS DRAWING CONTAINS INFORMATION THAT IS PROPRIETARY TO MOLEX INCORPORATED AND SHOULD NOT BE USED WITHOUT WRITTEN PERMISSION					

12 11 10 9 8 7 6 5 4 3 2 1

FINISH: A (TIN)	
CKTS	MATERIAL NO.
2	44812-0002
3	44812-0003
4	44812-0004
5	44812-0005
6	44812-0006
7	44812-0007
8	44812-0008
9	44812-0009
10	44812-0010
11	44812-0011
12	44812-0012
13	44812-0013
14	44812-0014
15	44812-0015
16	44812-0016

FINISH: B (15 GOLD)	
CKTS	MATERIAL NO.
2	44812-0020
3	44812-0021
4	44812-0022
5	44812-0023
6	44812-0024
7	44812-0025
8	44812-0026
9	44812-0027
10	44812-0028
11	44812-0029
12	44812-0030
13	44812-0031
14	44812-0032
15	44812-0033
16	44812-0034

FINISH: C (30 GOLD)	
CKTS	MATERIAL NO.
2	44812-0040
3	44812-0041
4	44812-0042
5	44812-0043
6	44812-0044
7	44812-0045
8	44812-0046
9	44812-0047
10	44812-0048
11	44812-0049
12	44812-0050
13	44812-0051
14	44812-0052
15	44812-0053
16	44812-0054

UPDATE FINISH FC NO: UCP2006-2178 DRAWN BY: DER CHKD: ADERR APPR: FSM TH 2006/03/17 2006/03/21 2006/03/22	QUALITY SYMBOLS 	GENERAL TOLERANCES (UNLESS SPECIFIED)		DIMENSION STYLE IN/MM		SCALE 1:1	DESIGN UNITS INCH	THIRD ANGLE PROJECTION	
		4 PLACES ± --- ± ---	3 PLACES ± --- ± .010	DRAWN BY MUELLER	DATE 2001/09/22	TITLE KK 100 PCB CONN ASSY LOW PROFILE			
		2 PLACES ± 0.25 ± .015	1 PLACE ± 0.38 ± ---	CHECKED BY MUELLER	DATE 2001/09/23	APPROVED BY MARGULIS			
		ANGULAR ±1/2°		DATE 2001/09/24		MATERIAL NO. SD-44812-001			
DRAFT WHERE APPLICABLE MUST REMAIN WITHIN DIMENSIONS		SEE CHART		DOCUMENT NO. SD-44812-001		SHEET NO. 2 OF 2		THIS DRAWING CONTAINS INFORMATION THAT IS PROPRIETARY TO MOLEX INCORPORATED AND SHOULD NOT BE USED WITHOUT WRITTEN PERMISSION	